

To: Postal Customer

Nov. 2021



2021 Annual Update

Another Way We are Improving our Communities

Last year was certainly an interesting year! But although a lot changed, some things remained constant: the strength of our community, our love for our neighbors and friends, and the resilience of North Dakotans.

Another constant is our community's permanent endowment fund. We continue to award grants from this fund every year to projects and programs in our community that need support. And this will continue forever, since our fund is permanently endowed. What a gift to our community - We're so glad there were residents and community leaders who had a vision back in 2014 to start this fund!

Our fund's advisory committee continues to work hard to grow our fund and review grant applications every year. Please feel free to contact any of us if you have a question about our fund or would like to serve on this committee!

- BSCCF Advisory Committee



The BSCCF Advisory Committee reviews grant applications at their September 2020 meeting, along with John Heinen (left) of the North Dakota Community Foundation.

\$19,116 Awarded in 2020/2021

The Bowman & Slope County Community Foundation Advisory Committee awarded a total of \$11,900 in five different grants in 2020. This amount was a huge increase from 2019's grants, thanks to the Bowman Power of 100 group that raised significant dollars for our communities that year. Another \$7,216 was awarded in four different grants in 2021.

2020 grants

- **Scranton Fire Protection District:** \$4,000 for SCBA unit repairs and improvements
- **Brosz Engineering, Inc.:** \$3,500 for a Splash Path at Rotary Park



- **The Giving Tree:** \$3,000 to help residents of Bowman and Slope counties experiencing financial hardships, especially during the Christmas season.
- **Amidon Fire Protection District:** \$700 for EMR Equipment & Lighting
- **Marmarth Ambulance Service:** \$700 for repeater batteries

2021 grants

- **Bowman Fire Department:** \$4,000 for SCBA masks
- **Pioneer Trails Regional Museum:** \$866 for Backyard Paleo: Discovering Paleontology in Your Own Backyard
- **Scranton Fire Protection District:** \$1,350 for replacement boots
- **Women Empowering Women:** \$1,000 for Bowman Landing

Bowman & Slope County CF

- **Total Market Value of Fund (as of 9/30/2021): \$248,452**
- **Grants Given in 2021: 4 grants totaling \$7,216**
- **Total Grants awarded since inception: 18 grants totaling \$29,229**

The Power of a Recurring Gift

If you'd like to support the Bowman & Slope County Community Foundation, but can't write a big check all at once, consider setting up a recurring monthly gift online. Just \$10 or \$25 every month would help our fund steadily grow and the process is simple! Look at the impact your small monthly gift, invested with an average annual 7% return*, could have over time:

Monthly gift	Total impact after one year	After two years	After three years
\$10	\$124	\$257	\$399
\$25	\$310	\$642	\$998
\$35	\$434	\$899	\$1,398
\$50	\$620	\$1,284	\$1,997

Now imagine the impact if 30 families in our area set up a recurring gift! When multiple people give in this way (or with a check), their combined giving makes a huge difference for our communities.

To set up a recurring gift to our foundation, follow the steps below:

1. Go to www.NDCF.net/BowmanSlope
2. Click on the "Donate" button on that page.
3. Choose "Recurring Donation Amount" and fill in the amount of money you wish to donate every month.
4. Follow the instructions to complete the checkout process.

You will receive a tax receipt for your donation and you can change the amount or frequency of your gifts at any time.

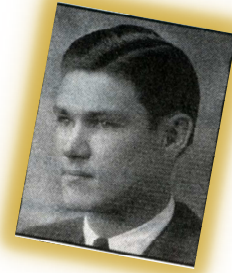
Thank you for supporting our schools, park districts, senior citizens, emergency services, and entire area through our foundation!

** For illustration purposes only, return not guaranteed.*



Harry Stephenson died in 2005 at the age of 93.

In 2020, he sent members of the Grafton Fire Department to a Grain Bin Extrication Training course.



Harry left a gift in his will to provide resources for communities in northeast North Dakota. The fund he created gives out thousands of dollars in grants for projects in Grafton and the surrounding area every year. **His last gift will last forever.**

What will YOUR Legacy be?

If you would like to improve the quality of life in Bowman & Slope Counties long after you are gone, consider leaving a portion of your estate to our area's community foundation.

Leave your Legacy in Bowman/Slope.

"What a man does for himself dies with him. What he does for his community lives long after he is gone."

- Theodore Roosevelt

Questions or want more information?



Bowman/Slope Community Foundation
C/O Economic Development Corp.
PO Box 1128, Bowman, ND 58623

BowmanSlope@NDCF.net - 701-523-5880

www.NDCF.net/BowmanSlope

Committee Members:

Jeanine Clendenen, Chair	Kasey Burke, Vice-Chair
Carla Teske	Robb Narum
Ron Palczewski	Amy Fischer
Teran Doerr	Ila Kelner
	Shelby Kinkade



The Bowman & Slope County Community Foundation is a component fund of the North Dakota Community Foundation (NDCF). NDCF provides comprehensive charitable services for the local committee and its donors including donor gift planning & bequest planning, communication support, and fiduciary services including accounting, audit, and money management. For more information about our charitable services, contact John Heinen, NDCF Development Director at 701-590-4614 or John@NDCF.net.