



2021 ANNUAL REPORT

Do what you can, with what you have, where you are.

- Theodore Roosevelt

Mission Statement

The mission of the North Dakota Community Foundation is to improve the quality of life for North Dakota's citizens through charitable giving and promoting philanthropy.

About the North Dakota Community Foundation

The North Dakota Community Foundation was incorporated in 1976. NDCF is an IRS designated 501(c)(3) statewide, public, nonprofit, tax-exempt corporation that receives and distributes charitable funds to support a wide range of programs that benefit North Dakotans.

NDCF was formed by a group of concerned citizens who were looking for a general charitable vehicle to build endowment to support the nonprofit sector in the state. Initial support for the Foundation came from the Otto Bremer Foundation (now the Otto Bremer Trust), the Northwest Area Foundation, the Norwest Bancorporation, the North Dakota Bremer Banks and the Bush Foundation.

NDCF has continued to grow and flourish over the years thanks to the support of thousands of individuals and businesses who want to make North Dakota a better place to live, work, and play.

National Standards

The National Standards Seal represents official confirmation from the Community Foundations National Standards Board that NDCF has met the most rigorous standards for community foundations. The seal affirms NDCF's commitment to financial security, transparency, and accountability and says that our grantmaking includes an open, competitive process designed to address the changing needs of our community.



Want an easy way to support the work of NDCF? When you shop online, go to smile.amazon.com and choose "North Dakota Community Foundation" as the organization you wish to support. You pay the same price for items as the regular Amazon site, but Amazon donates a portion of the purchase price to NDCF to support our work across the state!



This and past issues of the North Dakota Community Foundation's Annual Report are available on our website at NDCF.net



About Our Year

NDCF Board of Directors	4
Letter from our Chair & CEO.....	5
2021 At-A-Glance.....	6
Our Community Foundations.....	8
Our Statewide Greatest Needs Fund.....	10
New Funds in 2021.....	12

Financial Reports

Gifts Received in 2021	18
Grants Awarded in 2021.....	23
Endowment Assets of Our Funds	44

Donors & Memorials

Giving Back/Leaving a Legacy

Here to Help: Our Staff.....	72
Leave Your Legacy in North Dakota with a Gift Through Your Will or Trust	73



NDCF board members at the September 2021 meeting. Left to right: Chantel Southam, Wanda Uran-Nelson, C.J. Hager, Bonnie Krause, David Meier, Troy Walters, Vicki Kunz, Justin Forde, Breanne Carlson, Bruce Dolezal, and Ann Poeschel West. Not pictured: Chris Griffin, Terry Lang, and Ken Hall

NDCF Board of Directors

NDCF is governed by a 15-member Board of Directors. They are volunteers and receive no financial compensation for their services on the Board. They are elected from the population of North Dakota and are selected to represent a broad cross-section of North Dakotans. They can serve two three-year terms and then must leave the Board. This structure ensures that the North Dakota Community Foundation is truly the people of North Dakota's Foundation.

If you are interested in serving on the NDCF Board, please contact our Bismarck office. We keep a list of potential board members for consideration.

2021 NDCF Board Of Directors:

Chairperson

Vicki Kunz, Insurance Risk Manager, Retired..... Bismarck

Vice Chairperson

Chris Griffin, Land Company Owner..... Grand Forks

Secretary-Treasurer

Chantel Southam, CPA..... Mohall

Directors

Justin Forde, Director of Public AffairsArgusville

Ann Poeschel West, Financial Advisor..... Grafton

Bonnie Krause, CEO/GM of Telecommunications Company, Retired..... Hazen

Breanne Carlson, Loan OfficerLisbon

Bruce Dolezal, Regional Bank President..... Dickinson

Troy Walters, Superintendent of SchoolsTwin Buttes

David Meyer, CEO of Farm/Construction Equipment Dealer Group.....Fargo

Terri Lang, Former Newspaper Reporter..... Strasburg

C.J. Hager, Investment Advisor..... Jamestown

Wanda Uran-Nelson, Rancher..... Watford City

Ken Hall, Community Leader & Retired Tribal Councilman Bismarck

Carla Peltier, Educator*Belcourt

Tim Ottmar, Attorney* Jamestown

Judy Estenson, Nurse* Warwick

Patrick Kelly, Dentist*Bowman

* term ended April 2021

Chair & CEO Letter

2021 Annual Report

The year 2021 began with a raging pandemic, which required all the precautions and adjustments a prudent person would take in such circumstances. For the North Dakota Community Foundation, this included having to cancel the 2021 North Dakota Picnic in Arizona which gathers more than 2,000 North Dakotans who live either temporarily or permanently in that sunshine state. We made our last round of COVID 19 response grants in the spring to food pantries in five of the most economically challenged counties in North Dakota. The board felt that this was an excellent way to use the remaining monies so generously offered by our donors to help those most in need.

As the vaccine was distributed and restrictions were lifted, attitudes changed. The NDCF Board decided to meet in person for the first time in a year and a half with the option to attend virtually for those who were more comfortable that way. It was terrific to see the spirited conversations and interactions by those separated for far too long.

And that was a big part of the story of our 2021 . . . providing service to our volunteers, donors, grantees and the people of North Dakota in the best way possible, depending on their situation and concerns.

If you want to see how creative and innovative North Dakotans can be, just put obstacles in front of them. We changed some, but not all, of our in-person fundraisers to virtual events, relied more heavily on direct mail in a few cases and held outdoor events to reduce the risk of transmission. Of course, we continued to utilize ZOOM meetings, where we used technology to keep touch with our volunteers all around the state (a valuable tool whether you're in a pandemic or not!). And, truth be told, while the technology is useful, we did as many in-person meetings and events as virtual ones. All of this resulted in a successful year in spite of the challenges.

You can see the financial results in the pages that follow. What you can't see in the numbers is the grit, the determination and the commitment that it took to achieve that success. Despite the toll taken by the pandemic, our volunteers, our board members and our staff kept working to accomplish our mission and to improve the quality of life for North Dakotans.

If you live here, you know what adversity is, whether it be floods, cold, heat, drought or any of the financial booms and busts that North Dakota has suffered over the years. What sets those who live here and love this state apart, is their dogged will to make it work no matter the obstacles. We are so honored and thankful for that spirit and for our part in making North Dakota better. It's about the people and here's to them!



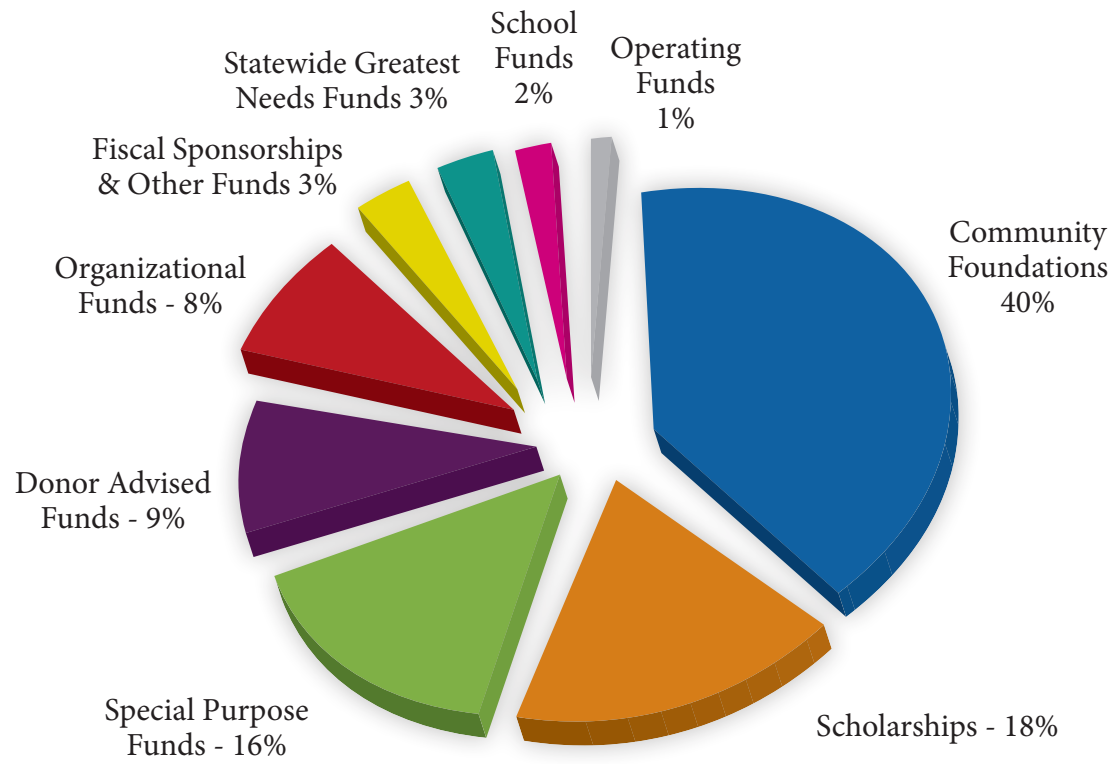
2021 Board Chair
Vicki Kunz



President & CEO
Kevin J. Dvorak

Total Assets by Fund Type

Our \$128 million in total assets are held in the following types of funds:



2,356 gifts, totaling over \$7.8 million to NDCF funds in 2021!

\$647,000 awarded in scholarships to North Dakota youth and 18 NEW scholarship funds started in 2021.



59 New Funds started at NDCF in 2021 to improve the quality of life in our state, including the Furry Rockin' Rescue Endowment Fund.

Over \$4.6 million in grants and charitable disbursements for projects and programs all across the state, including a grant from the New Rockford Community Foundation to purchase new bowling balls and shoes for the renovation of the community's Wonder Lanes bowling alley!



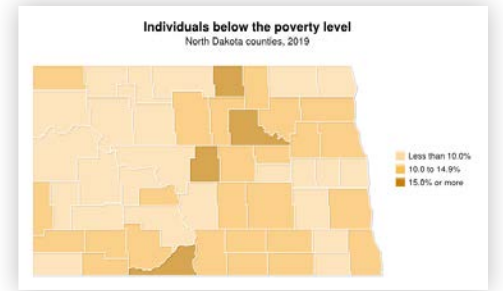
before



after

Here are some highlights from 2021!

We awarded our fourth and final grant round from our COVID-19 Community and Nonprofit Response Fund in March of 2021. The last \$55,000 from the fund was divided into equal grant amounts that went to 12 food pantries in the four North Dakota counties with the highest poverty rates. Image and data courtesy of NDCompass.org.



NDCF's Director of Communications Christi Stonecipher (far right) joined NDANO Executive Director Jennifer Greuel on ND Today in August to talk about National Nonprofit Day and nonprofits in North Dakota. We love supporting and promoting the nonprofit community!

We were glad to get back to meeting with our donors, volunteers, and grantees in-person in 2021! Here, our President and CEO Kevin Dvorak talks to an interested attendee at the North Dakota League of Cities annual conference in Bismarck in September.



Our Development Director East Amy Stromsodt was named the 2021 Respected Fundraising Professional of the Year by the Association of Fundraising Professionals – Northern Plains Chapter on November 16. Amy has been a fundraiser for over 25 years and currently provides service to 26 different community foundations in the eastern part of the state, as well as donors, financial professionals, school foundations, and other funds in her territory. WE always knew Amy was special – so glad others recognize it, too!



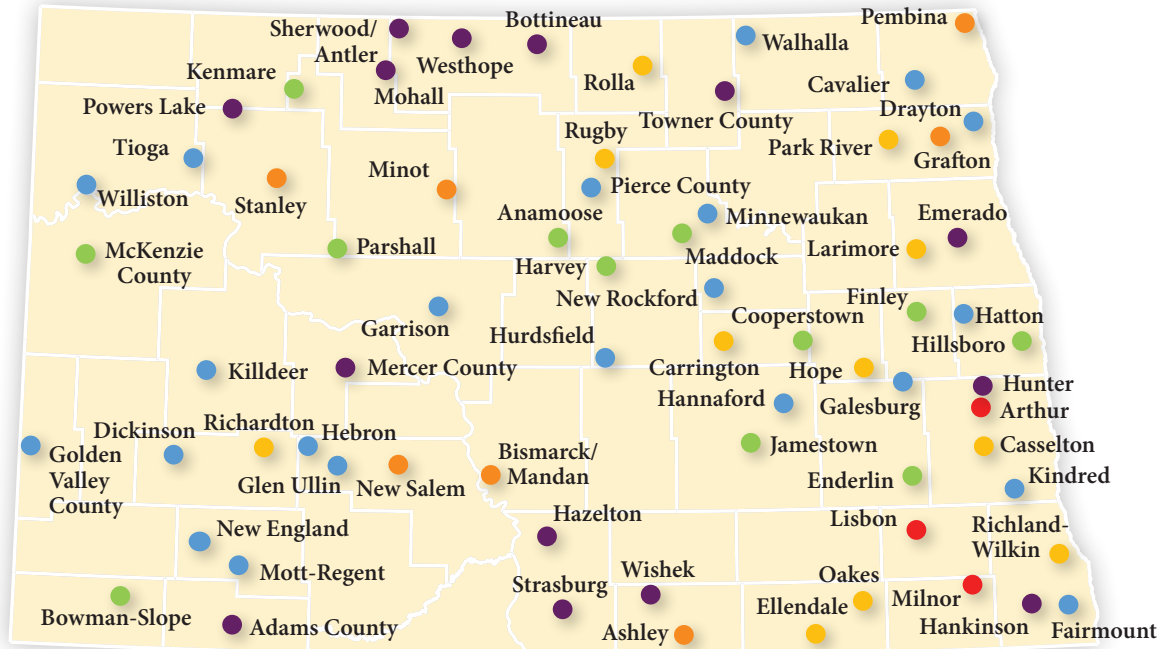
We had to cancel the 2021 North Dakota Picnic in Arizona due to concerns about COVID and COVID restrictions, but had a blast at the 2022 event and are hoping you can join us for the 2023 Picnic!



Follow the ND Picnic on Facebook: <https://www.facebook.com/ndpicnic/>

Our Community Foundations

Our local community foundations are the signature program of the North Dakota Community Foundation. NDCF currently manages local community funds for 69 different communities, counties, or areas in the state. These funds each have an advisory committee made up of local residents that lead fundraising efforts and recommend grant awards. These grants fund projects and programs that greatly improve the quality of life in these communities. It's an excellent example of local residents keeping their charitable dollars in their own hometown, supporting their own nonprofit organizations and needs. Here are some examples from 2021:



- \$5 Million +
- \$1,000,000 – \$4,999,999 in total assets
- \$500,000 – \$999,999 in total assets
- \$250,000 – \$499,999 in total assets
- \$100,000 – \$249,999 in total assets
- 0 – \$99,999 in total assets

- **Total assets in our Community Endowment Fund Program is over \$50 million!**
- We received **1,877 donations** to our community funds in 2021, totaling over **\$1.3 million.**
- **400 grants** were awarded in 2021 from our Community Endowment Funds, totaling almost **\$1.6 million!**

ASHLEY

A grant from the Ashley Community Endowment Fund supported a special LPN program that was a collaborative effort between the Ashley Medical Center and Bismarck State College to address the nursing shortage in the area. In July of 2021, the program graduated 5 LPNs, with 2 of the students coming from Venturia, 2 from Wishek, and 1 from Kulm. What a great program addressing a serious need in our rural communities!



What did our community grants help fund in 2021?



DICKINSON

Women Empowering Women used their grant from the Dickinson Area Community Foundation to hold a Health Fair specifically for the Hispanic women in their community, many of whom have not mastered the English language, do not drive, and lack guidance on many health topics. Materials were provided in Spanish and interpreters were available at every booth so attendees could ask questions. There were 52 attendees at the event.



ROLLA

The Rolla Community Endowment Fund committee hosted a Jewel City Gala to raise funds and celebrate their community! Six awards were handed out recognizing the new business of the year, emergency services volunteer of the year, most positive citizen, and others. The committee reached their goal of raising \$100,000 in 2021!



RICHLAND-WILKIN

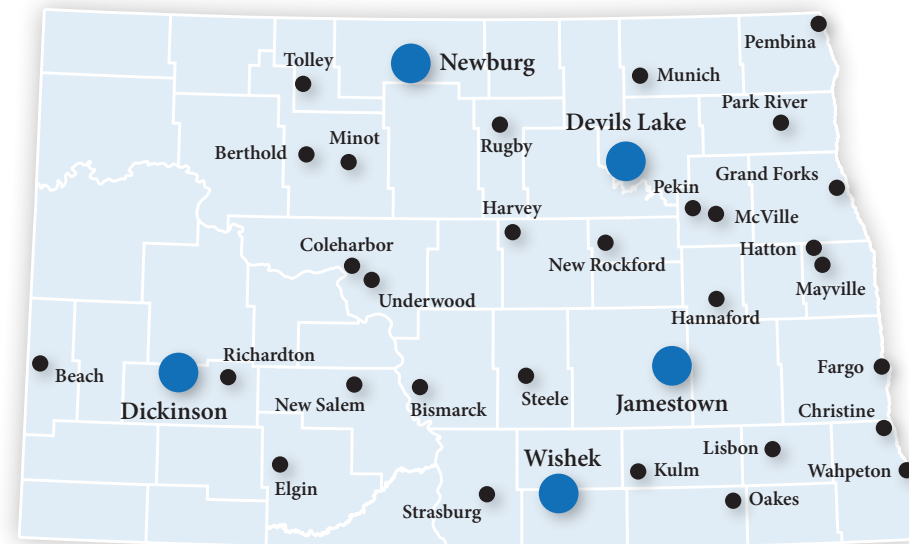
With COVID still a concern in the early part of 2021, the Richland-Wilkin Community Foundation and the Enderlin Area Community Endowment Fund got creative with their fundraiser: a Virtual Cooking Class, led by Chef Kyle Armitage of the ND State College of Science! Participants followed along at home as Chef Kyle prepared a delicious Italian meal.



Statewide Greatest Needs Fund

NDCF's Statewide Greatest needs Fund provides grant dollars for projects and programs across the state that make a significant difference in the quality of life of area residents. NDCF's Board of Directors reviews grant applications once a year and determines grant awards. NDCF was pleased to award \$172,646 in grants in 2021 to 39 organizations across the state, including those shown here.

Dickinson: Women Empowering Women received a grant to host a Coding Camp girls. *"The one week (five day) camp will be held at Dickinson Middle School. Target audience is girls entering 9th or 10th grades. We are inviting girls from Adams, Billings, Bowman, Dunn, Golden Valley, Hettinger, Slope and Stark Counties. The project goal is to ensure that young girls in our area are exposed to a full range of occupational choices regardless of gender. Our research shows a strong workforce demand in technology fields. We want to ensure that young women start to understand the breadth of career pathways in technology that might interest them, and expose them to training and experiences that let them sort through their interest levels."* – Ray Ann Kilen, Women Empowering Women



Newburg: The Newburg Community Club received funding for six new aluminum picnic tables to replace the old wooden ones in Newburg Park.



Jamestown: The Jamestown Rural Fire Department received a grant to purchase an Ultra High Pressure firefighting unit. *"Due to the extreme drought in 2021, we have responded to currently 103 fire calls, of which 59 of those have been wildland fire responses,"* wrote Fire Chief Brian Paulson in their application in July of 2021. *"This is compared to 55 total responses with 23 wildland fires in 2020, 54 total calls with 16 being wildland in 2019, and 35 total calls/15 wildland in 2018. The high volume of calls has crushed our 2021 operating budget."* The grant was delivered in October of 2021. Pictured left to right: Fire Chief Brian Paulson, NDCF board member CJ Hager and NDCF President & CEO Kevin Dvorak.

Wishek: The Wishek JDA received funding for fencing for a new daycare. *"It was critical that this project succeeded, as an existing daycare was closing, and many of the parents were concerned that they may have to take jobs elsewhere as there was not a backup plan for local daycare. The North Dakota Community Foundation grant was very much appreciated, as without having the funds to put in the fencing, it would have been difficult to open the daycare when it was so needed. Because there are some large, commercial-type buildings located directly behind the daycare property, and there are large semi-trucks making deliveries, it was critical that the fence be in place. The fence was installed on the property in late August, and the daycare was able to open within a few days after it had been completed."* – Becky Thatcher-Keller, Wishek JDA



Devils Lake: The local VFW Post 756 received a grant to improve the accessibility of their building. *"Each year our VFW Post delivers gifts to area Veterans in nursing homes and assisted living facilities. We also deliver to WWII and Korean War Vets that are not in nursing facilities. The attached photo shows Wes Widmer, VFW Post Commander (Left) and Mike Grafsgaard, VFW Post Quartermaster (right), delivering a gift to Korean War Veteran Tom Nistler. Tom served on our Honor Guard a number of years and was active in our Post, helping Vets over the years. The stairs have made it difficult for Tom and his wife to continue to attend meetings and socialize at the VFW. With the help of the ND Community Fund, we hope to have the lift project complete in 2022 and allow access to area Veterans that are mobility impaired. We told Tom he will be the first to use the lift once it is installed!"* – Mike Grafsgaard, VFW Post 756



Would you like to make a difference in communities across North Dakota? Make a donation to our Statewide Greatest Needs Fund in 2022 and you will support projects like these all across our state! Or leave a gift in your will to this fund and make a difference forever!

To apply for a SWGN grant, go to [NDCF.net/receive/swgn](https://www.ndcf.net/receive/swgn). Applications are due by July 31, 2022.

New Funds

NDCF manages over 800 funds for the betterment of North Dakota citizens and their communities. We were pleased to welcome the following funds in 2021:

NEW COMMUNITY FOUNDATIONS

Community foundations are permanent, flexible, financial resources for their communities and surrounding area. The grant money they provide to local projects and programs every year can make a huge difference in the quality of life for their residents. Over time, their endowment funds can become a substantial source of funding for their communities. Some communities also establish non-endowment funds for special projects in their area. The following community funds were started in 2021. NDCF manages 69 local community foundations in North Dakota.

- New Rockford Community Foundation Project Non Endowment
- Richland Wilkin Power of 100 Non-Endowment Fund



The new Richland Wilkin Power of 100 fund was organized in late 2021 and held its first event – a beer pairing hosted by Summit Beer - in January of 2022. City Brew Hall Chef Eric Watson's offerings included citrus braised chicken lollipops with Keller Pils, crispy walleye cakes and coconut shrimp with Slugfest Juicy IPA, dry aged beef enchiladas with Summit Extra Pale Ale and chocolate almond bread pudding with Oatmeal Stout. The event raised \$7,200, which was split between the Children's Discovery Center, the Richland Wilkin Community Foundation's endowment fund, and future Power of 100 recipients.



NEW SCHOOL FUNDS

Numerous school foundations have been established in the last several years to provide additional resources to cash-strapped school districts. The additional funding from our school foundations fill in the gaps, providing everything from supplies to playground equipment to musical instruments to teacher housing. They can also provide long-term stability and resources for the school. Welcome to these new school foundations!

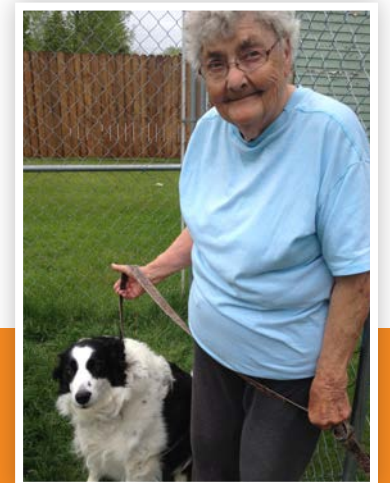


- Alexander Public School Football Field Project Non-Endowment Fund
- Beach Public School Alumni Non-Endowment Project Fund
- Beach Public School Project Non-Endowment Fund
- McKenzie County Public School Dist #1 Community Clean Up Project Non-Endowment Fund
- Nueta, Hidatsa, Sahnish College Food Sovereignty Endowment

NEW SCHOLARSHIPS

With the rising costs of higher education, more and more college-bound students need a helping hand. Thank you to the generous donors who established scholarships for North Dakota students in 2021 through NDCF.

- UTTC Bismarck Tribune Scholarship Fund
- Bowman County School Foundation Endowment Scholarship Fund
- Buchholz Endowment Scholarship Fund
- Curtis Schweitzer Scholarship Fund
- UTTC David Gipp Memorial Scholarship Fund
- Eleanor Wiebe Scholarship Fund
- Helen Bechold Scholarship Fund
- Leo D. & Mary C. Kalisiak Endowment Scholarship Fund
- Mary Cotton Marshall Fine Arts Scholarship Fund
- ND Aviation Association Awarded Scholarships
- Pat Dyk Endowment Scholarship Fund
- Paul Daniel Hougen Memorial Athletic Scholarship Endowment
- Pilot Legacy Scholarship Fund
- Richard & Diane Odegard Veterinary Scholarship Fund
- Rolfness Endowment Scholarship Fund
- St. Thomas, ND Scholarship Fund
- Wayne Olson Memorial Scholarship Fund
- Barbara Beach Study Abroad Scholarship Fund Non-Endowment



Eleanor Wiebe passed away in August of 2020 and left a gift of over \$600,000 in her will to provide scholarships for graduates of high schools in Wells County, North Dakota. She specifically wanted to help students going into agricultural programs. The first scholarships will be awarded in the Fall of 2022. Thank you, Eleanor! Contact NDCF if you are considering establishing a scholarship fund for students in your area. We are here to help you help others!



The Dickinson community is moving forward with a new Town Square development and started several funds at NDCF to support its construction and ongoing maintenance. Conceptual image by JLG Architects.

NEW ORGANIZATION FUNDS

Endowment funds provide long-term financial resources for organizations and can be an integral part of how they fund their operations and special projects every year. The stability of an endowment fund means the organization's mission can continue for countless generations. In addition, some organizations establish non-endowment funds at NDCF to help raise money for particular projects. Welcome to the following new organization funds:

- Furry Friends Rockin' Rescue Endowment Fund
- Town Square Dickinson Endowment Fund
- Town Square Dickinson Non-Endowment
- Town Square Dickinson Non-Endowment Project

NEW FISCAL SPONSORSHIPS

NDCF often serves as a fiscal sponsor for organizations, especially new causes just starting out. This allows people to focus on their passion instead of worrying about establishing 501(c)(3) status, tax implications, or other legal and administrative issues. NDCF served as the fiscal sponsor for the following funds created in 2021:

- Save the Fountain Committee (Park River)
- The Infinity Center (Wahpeton)
- Thompson Days Committee Fiscal Sponsorship
- Urban Harvest Fund (Bismarck)



Thompson Days is an annual community event that includes numerous activities including a cornhole tournament.



The Njos Family Endowment Fund was established by the ND Grazing Coalition with a gift from Edwina (Loken) Njos in honor of her parents Edwina and Betty Loken, who ranched for many years. The ND Grazing Coalition's goals are to provide local leadership, guidance, information, and technical assistance to grassland managers to promote the health and regeneration of North Dakota's grasslands. They hold a number of events throughout the year to accomplish these goals, including tours of North Dakota ranches and discussions about rotational grazing, regenerative agriculture, and other topics. Anyone can contribute to the Njos Family Endowment Fund to promote these goals.

The family of Marilyn Cross Hudson established an endowment fund to honor her life and continue her charitable giving. Marilyn's six grandchildren will recommend grant awards from this fund, guided by Marilyn's values and charitable goals.

NEW GIFT ANNUITIES

Charitable Gift Annuities provide an income for life to the donor and a gift to the causes that are most important to them when they're gone. CGAs are becoming an increasingly popular charitable-giving tool. One new CGA was established at NDCF in 2021.



NEW SPECIAL PURPOSE (RESTRICTED) FUNDS

Some funds are established at NDCF with a specific cause in mind. These special purpose or "restricted" funds can be related to a one-time disaster response or support specific charities and projects permanently. The following special purpose funds were created at NDCF in 2021:

- Denis & Pat Montplaisir Memorial Fund
- Eileen & James Zimmerman Fund
- Hankinson Veterans Memorial Park Fund
- Kenmare Pool & Playground Project Fund
- Mohall Park District Splash Pad Project Fund
- Njos Family Endowment Fund
- North Dakota Nurse Practitioner Association Educational Endowment Fund
- Powers Lake Community Enhancement Project Fund
- St. Patrick's Legacy Endowment Fund

NEW DONOR-ADVISED FUNDS

Several families established donor-advised funds in 2021 and recommend where their grant dollars should go every year. Donor-advised funds can be either permanently endowed or non-endowment funds, depending on the donor's desires.

- Carpenter Foundation Fund
- David Eckroth Charitable Endowment Fund
- Hulstrand Family Fund
- Marilyn Cross Hudson Legacy Fund
- P.R. Gurholt Charitable Fund
- Thoreson Steffes Charitable Fund Endowment
- Thoreson Steffes Charitable Fund Non-Endowment
- Timothy & Linda Duppong Charitable Fund

The North Dakota Community Foundation

Statement of Financial Position

December 31, 2021

ASSETS	
Current assets	
Cash and cash equivalents	\$ 5,693,840
Accounts receivable	33,497
Accrued investment income	862,241
Contributions receivable	49,524
Stock held for sale	733,802
Total current assets	<u>7,372,904</u>
Noncurrent assets	
Investments, managed by trust companies, at market	115,060,346
Other investments, at market	1,860,930
Land awaiting sale	3,768,197
Office equipment & vehicles, at cost, less accumulated depreciation	34,223
Mineral rights	855,515
Total noncurrent assets	<u>121,579,211</u>
 Total assets	 <u>\$ 128,952,115</u>
LIABILITIES AND NET ASSETS	
Current liabilities	
Accounts payable	\$ 3,486
Grants payable	11,450
Total current liabilities	<u>14,936</u>
Noncurrent liabilities	
PTO liability	90,030
Liability to annuitants for charitable gift annuities and charitable remainder trust	512,940
Total noncurrent liabilities	<u>602,970</u>
 Total liabilities	 617,906
Net assets	
Without donor restrictions	14,870,928
With donor restrictions	113,463,281
Total net assets	<u>128,334,209</u>
 Total liabilities and net assets	 <u>\$ 128,952,115</u>

The North Dakota Community Foundation

Statement of Activities

For the year ended December 31, 2021

	Without Donor Restrictions	With Donor Restrictions	Total
REVENUES			
Gifts and grants	\$ 3,029,883	\$ 4,635,158	\$ 7,665,041
Interest and dividend income	1,612,103	217,653	1,829,756
Income on minerals	10,759	232,219	242,978
Split interest changes	(50,901)	71,061	20,160
Miscellaneous	42,243	26,656	68,899
Net assets released from restrictions	6,100,315	(6,100,315)	-
 Total revenues	 10,744,402	 (917,568)	 9,826,834
EXPENSES			
Program expenses:			
Grants paid	4,373,273	-	4,373,273
Charitable project and program expenses	2,645,374	-	2,645,374
Total program expenses	<u>7,018,647</u>	<u>-</u>	<u>7,018,647</u>
Supporting service expenses			
Management and general	551,840	-	551,840
Fundraising	447,457	-	447,457
Total supporting service expenses	<u>999,297</u>	<u>-</u>	<u>999,297</u>
 Total expenses	 <u>8,017,944</u>	 <u>-</u>	 <u>8,017,944</u>
 Revenues over (under) expenses	 2,726,458	 (917,568)	 1,808,890
 Net unrealized gains (losses) on valuation changes	 -	 (257,631)	 (257,631)
Net realized gains (losses) on long-term investments	570,103	4,363,636	4,933,739
Net unrealized gains (losses) on long-term investments	663,480	5,312,428	5,975,908
Total net realized and unrealized gains (losses)	<u>1,233,583</u>	<u>9,418,433</u>	<u>10,652,016</u>
 CHANGE IN NET ASSETS	 3,960,041	 8,500,865	 12,460,906
 NET ASSETS, BEGINNING OF YEAR	 10,949,761	 104,962,416	 115,912,177
PRIOR PERIOD ADJUSTMENT, (NOTE 15)	<u>(38,874)</u>	<u>-</u>	<u>(38,874)</u>
NET ASSETS, BEGINNING OF YEAR, RESTATED	<u>10,910,887</u>	<u>104,962,416</u>	<u>115,873,303</u>
 NET ASSETS, END OF YEAR	 <u>\$ 14,870,928</u>	 <u>\$ 113,463,281</u>	 <u>\$ 128,334,209</u>



The NDCF Board of Directors engaged an independent certified public accounting firm to audit the Foundation's modified cash basis financial statements for the year ended December 31, 2021. The auditors have issued an unmodified opinion dated April 15, 2022, on the modified cash basis financial statements presented on pages 16 & 17. Copies of the audit are on file at the Foundation's office for inspection.

The North Dakota Community Foundation Schedule of Gifts Received

Year Ended December 31, 2021

***Denotes New Funds

NDCF Statewide Greatest Needs & Field of Interest Funds

AMKO Charitable Endowment Fund	\$	10,000
Unrestricted Fund		150,556
Total Gifts to NDCF Statewide Greatest Needs & Field of Interest Funds		160,556

Community Funds

Adams County Community Foundation	27,533
Anamoose Area Community Foundation	8,020
Ashley Community Endowment Fund	10,100
Bismarck/Mandan Community Foundation	15,469
Bottineau Community Endowment Fund	5,123
Bowman/Slope Community Foundation	54,920
Bowman/Slope Power of 100 Non-Endowment Fund	100
Bowman-Slope Community Foundation Non-Endowment	100
Carrington Community Endowment Fund	13,254
Casselton Area Community Foundation	15,084
Cavalier Community Foundation	10,475
Cavalier Non-Endowment Fund	3,121
Chris Rostvet Memorial Fund	207
Cooperstown Community Foundation	3,818
Dickinson Area Community Foundation	21,757
Dickinson Area Community Foundation Non-Endowment Fund	93,806
Dickinson Area Community Foundation Project Fund	5,050
Drayton Area Community Foundation	3,225
Ellendale Area Community Foundation	32,813
Emerado Community Endowment Fund	5,350
Emerado Community Non-Endowment Fund	8,011
Enderlin Area Community Endowment Fund	109,214
Enderlin Community Non-Endowment Fund	1,425
Fairmount Community Endowment Fund	2,000
Finley Community Endowment Fund	16,755
Galesburg Area Foundation	3,925
Garrison Area Community Foundation	2,500
Glen Ullin Area Community Foundation	50
Golden Valley County Community Foundation	2,700
Grafton Community Foundation	3,050
Hankinson Community Endowment Fund	15,700
Hannaford Area Community Foundation	1,340
Harvey Area Community Foundation	1,405
Hatton Area Community Foundation	6,348
Hatton Area Community Foundation Non-Endowment	14,359
Hazelton-Moffit-Braddock "Uncle T's" Community Foundation	33,445
Hazelton-Moffit-Braddock "Uncle T's" Non-Endowment***	125
Hillsboro Community Foundation	3,010
Hope Area Community Foundation	8,155
Hope Area Community Foundation Non-Endowment Fund	15,800
Jamestown Community Foundation	14,200
Judy Mae Hauff Memorial Fund	10,000
Kenmare Area Community Foundation	8,460
Kenmare Area Community Foundation Non-Endowment Fund	1,795
Killdeer Area Community Foundation	12,500
Kindred Area Community Foundation	3,653
Larimore Community Endowment Fund	4,584
Lisbon Area Community Foundation	12,087

Maddock Community Foundation	\$	4,320
McKenzie County Community Foundation		45,756
Mercer County Community Project Fund Non-Endowment		515
Mohall Area Community Foundation		9,536
Mott-Regent Community Foundation		5,750
New Rockford Community Foundation Project Non-Endowment***		23,535
New Salem Area Community Foundation		25,782
Oakes Area Community Foundation		30,737
Park River Community Endowment Fund		16,515
Parshall Area Community Foundation		8,044
Powers Lake Community Foundation Endowment		38,804
Richardton Area Community Foundation		14,286
Richland Wilkin Community Foundation		13,693
Richland Wilkin Community Foundation Annual Campaign Fund		100,187
Richland Wilkin Non-Endowment Fund***		2,469
Richland Wilkin Power of 100 Non-Endowment Fund***		1,800
Rolla Community Endowment Fund		178,751
Rolla Community Non-Endowment Fund		18,578
Rugby Community Endowment Fund		15,494
Sherwood/Antler Community Foundation		2,909
Stanley Area Community Foundation		136,700
Stanley Area Community Foundation Non-Endowment Program Fund		50
Strasburg Area Community Foundation		300
Tioga Community Foundation		10,102
Walhalla Area Community Foundation		2,095
Williston Area Community Foundation		19,500
Wishek Area Community Foundation		11,914
Total Gifts to Community Funds		1,384,043

Scholarship Funds

Alice Olson Byron Memorial Music Scholarship Fund	1,000
American Legion Riders ND District #2 Scholarship	1,795
Benjamin Berg Memorial Scholarship Fund	6,248
Bismarck Rotary Club Scholarship Fund	9,693
Bismarck Tribune Scholarship Fund***	25,000
Bowman County School Foundation Endowment Scholarship Fund***	4,126
Buchholz Endowment Scholarship Fund***	185,964
Clarence Johnson/Eunice Iwen Scholarship Fund	10,000
Cody Feist Memorial Scholarship Fund	50
Curtis Stern Memorial Scholarship Fund	200
David Gipp Memorial Scholarship Fund***	25,000
Donald & Irene Metzen Scholarship Fund	11,667
Donna Maston Charitable Scholarship Fund	5,000
Dr. Roger E. Meisner Veterinary Medicine Educational Fund	500,000
Dushinske & Jamison Water Resources Scholarship Fund	4,901
Eleanor Wiebe Scholarship Fund***	632,348
Esther Hample Scholarship Fund	1,943
Garry Opp Memorial Scholarship Fund	750
Harold & Eldeane Johnson Scholarship Fund	6,667
Helen Bechold Scholarship Fund***	3,500
Hettinger Class of 1996 Memorial Scholarship Non-Endowment	1,503
Ishmael & Rose Diede Charitable Fund for Scholarships	25
Jeff Burgess Memorial Scholarship Fund	2,000
Jim & Barbara Blaine Scholarship Fund	5
Jim Lawler Memorial Scholarship Fund	500
John E. Conneran Memorial Scholarship	403
Kathy Eggmann Memorial Scholarship Fund	25
Kirstin Skari Memorial Scholarship Fund	800
Leo D. & Mary C. Kalisiak Endowment Scholarship Fund***	25,322
Lisa Kraft Memorial Scholarship Fund	303
Lloyd A. Engh North Star Masonic Lodge Fund	263
Mary Cotton Marshall Fine Arts Scholarship Fund***	3,866
ND Aviation Association Scholarship Non-Endowment Fund***	11,899

ND Career & Technical Education Endowment Fund	\$ 1,035
ND Farmers Union-Alan Bergman Scholarship Fund	19,060
ND Veterinary Medical Association Scholarship Fund	12,330
ND Veterinary Medical Association Scholarship Non-Endowment Fund	14,533
NDCF/ND Nurses Association Scholarship Fund	100
North Dakota Nurse Practitioner Association Scholarship Fund	10,131
Pat Dyk Endowment Scholarship Fund***	12,464
Paul Daniel Hougen Memorial Athletic Scholarship Endowment***	20,000
Paul Daniel Hougen Memorial Athletic Scholarship Fund	3,509
Pilot Legacy Scholarship Fund***	22,000
Richard & Diane Odegard Veterinary Scholarship Fund***	50,000
Rick & Nancy Warner Bigler Scholarship Fund	3,030
Rolfness Endowment Scholarship Fund***	32,601
Ronald D. Liudahl Scholarship Fund	5,564
Rugby High School Alumni Scholarship Fund	240
St. Thomas, ND Scholarship Fund***	57,165
Tiny & Joyce Gebhardt Scholarship Fund	350
Tom & Ruth Bettenhausen Scholarship Fund	5,000
Tom Sturdevant Scholarship Fund	1,000
Travis Allen Hohbein Memorial Scholarship Fund	754
U.S. Durum Growers Association Scholarship Fund	1,053
Wayne Olson Memorial Scholarship Fund	5,250
Total Gifts to Scholarship Funds	1,759,934

School Funds

Alexander Public School Football Field Project Non-Endowment Fund***	32,300
Alexander Public School Foundation Fund	21,581
Beach Public School Alumni Non-Endowment Project Fund***	25
Beach Public School Project Non-Endowment Fund***	25
Carrington Public School Fund	5,213
Grenora Public School Foundation Fund	11,389
Kulm Public School Foundation Non-Endowment Fund	52
Lisbon Public Schools Endowment Fund	5,000
McKenzie County Public School Dist #1 Community Clean Up Project Non-Endowment Fund***	1,163
McKenzie County Public School Dist #1 Foundation Fund Non-Endowment	9,691
McKenzie County Public School Foundation Dist #1 Academic Project Fund	2,042
McKenzie County Public School Foundation District #1 DARE Project Fund	4,600
New Rockford-Sheyenne Public School Non-Endowment Fund	188,791
Northern Cass Education Foundation	5,590
Nueta, Hidatsa, Sahnish College Food Sovereignty Endowment***	12,552
Park River Area Education Foundation - Endowment	7,336
Powers Lake Public School Foundation	1,031
Ray-Nesson Public School Project Non-Endowment	1,375
Wahpeton Alumni Foundation	13,316
Will Athletic Complex Renovation	19,000
Wyndmere School Foundation	5,600
Total Gifts to School Funds	347,671

Organization Funds

ABLE, Inc. Endowment Fund	100
Alpha Opportunities Endowment Fund	20,000
Badlands Ministries Endowment Fund	45,000
Bethel Church Endowment Fund	5,000
Catholic Charities North Dakota Endowment Fund	3,000
Cooperstown Bible Camp Endowment Fund	89,000
Dickinson Rotary Charitable Endowment Fund	5,500
Enderlin Museum Endowment Fund	5,492
Furry Friends Rockin' Rescue Endowment Fund***	6,052
Gateway to Science Endowment Fund	15,201
Heart of America Germans from Russia Endowment Fund	8,701
Humanities North Dakota Endowment Fund	430
Jeremiah Program Fargo Moorhead Scheel Barry Endowment	115,483
Linton Hospital Endowment Fund	5,052

The Parshall American Legion Auxiliary used their grant money to send a monthly note, signed by all Auxiliary members, to 30 Parshall residents who now reside in assisted living facilities or nursing homes. "It has been an eye-opener to the Auxiliary how something so little to us has been huge to the residents, and how they look forward to hearing from us the next month."



Lord of Life Lutheran Church Endowment Fund	\$ 5,000
McKenzie County Health System Endowment Fund	5,000
McKenzie County Right To Life Endowment	25,503
Missouri Slope Areawide United Way Endowment Fund	10,053
North Dakota Adult & Teen Challenge Endowment Fund	11,000
North Dakota FFA Foundation Endowment Fund	5,000
Richardton Health Center Foundation Endowment Fund	625
Rural Leadership ND Alumni Foundation	8,906
Rural Leadership ND Alumni Foundation Non-Endowment Fund	2,500
Town Square Dickinson Endowment Fund***	5,515
Town Square Dickinson Non-Endowment***	8,025
Town Square Dickinson Non-Endowment Project***	612,550
United Way Dickinson Endowment	9,000
Vision West ND Endowment Fund	567
Vision West ND Project Non-Endowment Fund	2,200
Washburn Volunteer Ambulance Service Endowment Fund	6,311
Women's Care Clinic Endowment Fund (Bismarck)	5,027
Young Life North Dakota (Bismarck) Fund	10,027
Young Life North Dakota (Native) Fund	5,155
Total Gifts to Organization Funds	1,061,973

Restricted Funds

Alice Baer Memorial Foundation	103
Beaulieu Township Norwegian Lutheran Cemetery Endowment Fund	500
Bismarck Hebrew Congregation Endowment Fund	200
Brown Brothers Memorial Recognition Project Fund	5,556
Charitable Gift Annuities	2,546
Connie Wold Wellness Foundation	7,500
Dakota Social Justice Fund	373
Denis & Pat Montplaisir Memorial Fund***	25,000
Donor Advised Funds	2,414,620
Eileen & James Zimmerman Fund***	50,000
Fort Stevenson Foundation Endowment Fund	1,811
Friendship Park Dickinson Project Non-Endowment	40,664
Friendship Park: Dickinson Endowment Fund	10,000
Gary Bird Charitable Endowment Fund	25,000
Hamilton Cemetery Fund	5,000
Hankinson Veterans Memorial Park Fund***	25,000
I.O.O.F. Cemetery of Cando Fund	7,725
Inspiring Minds Endowment Fund	12,250
Kenmare Pool & Playground Project Fund***	100
Mandan Historical Society Endowment Fund	50
Mary G. Wiltse Memorial Endowment Fund	473
Mohall Park District Splash Pad Project Fund***	50,000
NDCF Disaster Response Fund	169
Njos Family Endowment Fund***	25,000
North Dakota Nurse Practitioner Association Educational Endowment Fund***	135,000
Parkinson Wellness Programming Fund	1,000
Pleasant Hill Cemetery Endowment Fund	1,650
Powers Lake Community Enhancement Project Fund***	25
Powers Lake Fire Project Non-Endowment Project Fund	1,000

Sacred Heart of Jesus Shrine on the Prairie Endowment Fund	\$ 5,100
Saddle Club Arena Complex:Killdeer Fund	5,150
Sheyenne River Speedway Matching Fund	25,000
Sons of Norway, Sverdrup Lodge #107 Endowment Fund	340
St. Patrick's Catholic Cemetery Endowment Fund	50
Stanley Library Non-Endowment Fund	50
West River Veterinary Clinic Legacy Foundation	5,000
Tota Gifts to Funds with Donor Restrictions	2,889,004

Operating Endowment Funds

Brooks Keogh Fund	1,500
Cynthia Timmins Maule Memorial Fund	25
Dr. Richard H. & Mischelle Timmins Fund	25
Kevin J. Dvorak Fund	5,000
Total Gifts to Operating Endowment Funds	6,550

Other Non-Endowment Funds

Central Dakota Cyclists Fund	1,770
Devils Lake Curling Club	5,000
Friends of the Rail Bridge Fund	19,742
Heart of America Germans from Russia Heritage Project	500
Lewis & Clark Trail Museum	500
NDCF Non-Endowment Fund	7,520
North Dakota Music Hall of Fame	1,000
North Dakota Native Tourism Alliance	15,000
North Dakota Suicide Prevention Coalition	8,521
North Dakota Woman Suffrage Centennial Committee	200
Operating Fund	58,432
Powers Lake Ambulance Non-Endowment Project Fund	1,000
Save the Fountain Committee***	57,847
Stark County Sheriff's Association of Deputies Special Project Fund	13,700
The Infinity Center***	85,250
Thompson Days Committee Fiscal Sponsorship***	9,787
Total Gifts to Other Non-Endowment Funds	285,769

Total Gifts including Internal Grants 7,895,500

Less: Internal Grants -230,439

Total Gifts to All Funds 2021 \$ 7,665,041

**The North Dakota Community Foundation
Schedule of Grants Paid**

Year Ended December 31, 2021

NDCF Statewide Greatest Needs & Field Of Interest Funds

Children & Family Service Funds, ND Women's Foundation, Don & Sylvia Schmid Fund		
Harry & Merle Stephenson Fund, Nash Foundation Fund, Henry & Selma Lundene Endowment Fund		
Berthold Park District - Community Warming House	\$ 5,000	
City of McVile - City Park Playground	5,000	
City of Strasburg - Welk Park	5,000	
City of Wishek - Wishek Day Care Equipment	5,000	
Designer Genes of North Dakota, Inc. - GROW Garden Project	5,000	
Donnybrook Park District - Playground & City Park Improvements	5,000	
Eagle Valley Food Pantry - Eagle Valley Food Pantry	2,500	
Elm Crest Manor - Elm Crest Outpatient Therapy Clinic	4,500	
Fraternal Order of Eagles Aerie 2923 - Building Updates	5,000	
Fredonia American Legion Post #0260 - Northside roof shingles replacement	5,000	
Geographical Center Historical Society - Prairie Village Museum Edible Parklet	5,000	
Golden Manor - New Medication Cart	2,547	
Golden Valley Manor - Bus Project	5,000	
Good Samaritan Society of Oakes - Outdoor Patio for residents	5,000	
Greater Minot Zoological Society (Roosevelt Park Zoo) - Guest wheelchair Program	2,000	
Hannaford Community Corporation - Community Center Roof Project	5,000	
Harvey Kiwanis Club - 2021-2022 Toddler Playset Project	5,000	
Hatton Eielson Public School - Hatton Eielson Playground	5,000	
Jamestown Rural Fire Department - Wildland Firefighting Equipment	5,000	
Kiddie Korner Preschool & Daycare, Inc. - Daycare Upgrades	5,000	
Lisbon Pool Preservers - Phase 3 - Community Wading Pool Renovation	5,000	
Lt Theo R Zech American Legion Post #180 - Clubroom Floor repairs	2,500	
Newburg Community Club - Newburg Park Picnic Tables	2,500	
Operation Homefront, Inc. - Holiday Meals for Military	2,500	
Pekin Park Board - Pekin Park Board Playground Project	5,000	
Pembina Ambulance Service Inc - Ambulance chassis	5,000	
Richland-Wilkin Emergency Food Pantry - Food 4 Kids Backpack Program	5,000	
ShareHouse Foundation - Enhancing Accessibility at ShareHouse Grand Forks	4,000	
St. Aloisius Medical Center - GlideScope for Emergency Department	5,000	
Stark County Department of Emergency Services - Emergency Management/911 Dispatch Radio Purchase	5,000	
Tolley Fire Department - Emergency Response Skid Unit	2,500	
Towner County Historical Society - Roof repair for Towner County Historical Society, Egeland School part.	5,000	
Trail County Council on Aging DBA Mayville Senior Center - Natural Gas Furnace Purchase/Installation	5,000	
Tri-Cities JJDA - Lake Tschida First Responder Bags	5,000	
Underwood Park Board - Underwood Park Board Pool repair	5,000	
USpireND - Healthy Families North Dakota Parent Group	4,100	
Veterans of Foreign Wars Post 756 - Accessibility Improvements	5,000	
Wishek Senior Citizens Club - Wishek Senior Center Energy Efficiency Project	4,205	
Women Empowering Women - Coding Camp for girls	3,000	\$ 171,852
Henry & Selma Lundene Endowment Fund		
Augsburg College - Annual Support	795	
Dakota Boys And Girls Ranch Foundation - Annual Support	795	
Heartview Foundation - Annual Support	795	
Lutheran Sunset Home - Annual Support	795	
Mountain Lutheran Church - Annual Support	530	
Park River Bible Camp - Annual Support	795	
Wishek Senior Citizens Club - Senior Center Energy Efficiency Project	795	5,300
Total NDCF Statewide Greatest Needs & Field of Interest Funds		177,151

IRA Charitable Rollover

- Avoid taxes on transfers
- Satisfy your RMD
- Provide crucial support to a ND community or nonprofit

Ask us how!

NDCF NORTH DAKOTA COMMUNITY FOUNDATION

Local Community Foundation Funds

Adams County Community Foundation

Adams County Youth Development Foundation - C.M. Cook Youth Development 4H and FFA Club Barn	\$ 640	
Southwest Dakota Human Service Zone - The Council for Boys and Young Men	<u>420</u>	\$ 1,060

Anamoose Area Community Foundation

Anamoose Housing Corporation - Replace the carpet in the hallway and community room of the Project	2,000	
Anamoose Rural Fire Protection District - SIRN radio replacement project	2,850	
Anamoose Senior Citizens - Senior Center North Side Sidewalk Repair	2,264	
City of Anamoose - Main Street Flowers 2022	500	
Harvey Kiwanis Club - 2021-2022 Toddler Playset Project	500	
Tri-County Senior Meals & Services - Anamoose Senior Nutrition Meals	<u>1,500</u>	9,614

Arthur - Clarence Johnson & Eunice Iwen Community Foundation for Arthur, ND

Arthur Fire Department - Repairs to fire trucks	2,500	
Arthur Fire Department - New Tanker-Pumper Fire Truck	28,059	
BIO Girls - BIO Girls - Northern Cass, ND - 2022	3,000	
City of Arthur - Newsletter Wafer Applicator	1,100	
City of Arthur - Arthur Beautification and Community Recreation 2021	4,100	
City of Arthur - City Shop	10,000	
City of Arthur - Boulevard Flags	1,000	
City of Arthur - Veterans Day Christmas Tree Lighting	3,500	
City of Arthur - Water Shed Drainage Project	15,000	
Community of Care - General Operating Support	5,000	
Community of Care - General Operating Support	5,000	
Hunter Ambulance Service - 4x4 Ambulance, Reduced State Funding	50,000	
Hunter Ambulance Service - Portable Radios for Hunter Ambulance	14,700	
Job Development Authority of Arthur - Principal Reduction JDA Loan	77,437	
Northern Cass Dollars for Scholars - 2021 Dollars for Scholars Scholarships	5,000	
Northern Cass Dollars for Scholars - 2022 Dollars for Scholars Scholarships	5,000	
Northern Cass School District #97 - Northern Cass Safety and Security Project	<u>15,000</u>	245,396

Ashley Community Endowment Fund & William E. Kretschmar Charitable Fund for Ashley

Ashley Ambulance Assoc. - Lucas Chest Compression System	8,000	
Ashley JDA - American Legion Hall Improvements	1,500	
Ashley JDA - Community Development	6,000	
Ashley Medical Center - Ashley Medical Center Nursing Program	7,000	
Ashley Public School - Technology Updates	2,000	
Ashley Chamber of Commerce - Community Events	2,000	
Lake Hoskins Improvement Association - South Side Lake Hoskins Maintenance	<u>1,000</u>	27,500

Bismarck/Mandan Community Foundation & Glenn & Helen Sorlie Memorial Fund

AID, Incorporated - AID, Incorporated Help Center	4,000	
Almont Historical Society - Almont Community Fitness Center-Gathering place for our young people, families, & community members	4,000	
Dakota Children's Advocacy Center - Expansion of services to abused children in the Bismarck area	4,000	
Rebuilding Together Great Bismarck/Mandan Area - 2022 Rebuilding Together Day	4,000	
Sacred Pipe Resource Center - Project UNITE (Urban Native Initiative for Training & Education)	4,000	
The Banquet - A community free meal	50,000	
Volunteer Caregivers for the Elderly - Assistance on keeping our elderly in the homes they love and out of facilities.	<u>4,000</u>	74,000

Bowman/Slope Community Foundation

Bowman Fire Department - SCBA Masks	4,000	
Pioneer Trails Regional Museum - Backyard Paleo: Discovering Paleontology in Your Own Backyard	866	
Scranton Fire Protection District - Replacement Boots	1,350	
Able, Inc. - Bowman Landing	<u>1,000</u>	7,216

Carrington Community Endowment Fund & McGinn-Kunkel Estate Fund

BIO Girls - BIO Girls - Carrington, ND - 2022	1,060	
Caring-ton Child Care Center - 2021/2022 Curriculum & Supplies	3,000	
Carrington Youth Sports - Ball Diamond Renovations	12,500	
Foster County Fair Board - Foster County Fairgrounds Portable Stage	2,000	
Foster County Historical Society/Putnam House - Column Replacement	2,000	
Friends of the Carrington City Library - Summer Reading Staffing	<u>2,000</u>	22,560

Casselton Area Community Foundation

Casselton Park District - Casselton Swimming Pool	3,621	
---	-------	--

Casselton Park District - Casselton Flowers	\$ 4,500	
Casselton Public Library - Summer Reading Program: "Oceans of Possibilities"	2,000	
Central Cass PTA - STEM + Science Festival	1,000	
Central Cass Public Schools - Spreading Sunshine at Central Cass	905	
Central Cass Treehouse - Food Basket/Summer Food Projects	1,000	
Community of Care - Volunteer Program	2,000	
Memorial F-4 Paint Project - MEMORIAL F-4 PAINT PROJECT	4,000	
Rural Cass County Emergency Food Pantry - General Fund for Food Pantry to be used for cleaning products for clients	<u>3,000</u>	\$ 22,026

Cavalier Community Foundation

Cavalier Park Board - Fuller-McKechnie Trail Signs	500	
Growing Hope in Pembina County - Funding for Residents with Cancer	1,000	
Northeastern North Dakota Heritage Association - Nordic Folk Art -Story Teller for Kid's Weekend	725	
Pembina County Backpack Program - Pembina County Backpack Program	1,500	
Pembina County Imagination Library - Pembina County Dolly Parton Imagination Library	750	
Pembina County Memorial Hospital Foundation - Mac Vu360 Resting ECG Machine Upgrade	<u>1,500</u>	5,975

Cooperstown Community Foundation

Cooper Theatre Inc - New Heater	900	
Cooperstown Awana - Cooperstown Awana Club	700	
Cooperstown Golf Club - Ice Machine Replacement	1,500	
Cooperstown Medical Center Foundation - Building Project	5,000	
Griggs County Community Youth Project ("More for Less" Thrift Store) - Replace window & insulate west wall	3,000	
Griggs County Historical Society - Map Display of Griggs County Early History	700	
Town and Country Garden Club - General maintenance and supplies	500	
Zion Lutheran Church - Community Vacation Bible School	<u>300</u>	12,600

Dickinson Area Community Foundation

Badlands Hope - Mobile Services and Education	7,500	
Leadership Dickinson - Dickinson Area Chamber of Commerce - Leadership Dickinson	1,000	
Second Chances Volunteers - Furever Full Pet Food Pantry	4,000	
Women Empowering Women - Well Women Care: In Search of Better Living Conditions	1,934	
Association to Meet Emergency Needs, Inc. (AMEN) - Security for the new pantry location	600	
Dickinson Hockey Club - Program Support	640	
Dickinson Public School District - Dickinson Public Schools Leaping Into Literacy	<u>3,919</u>	19,593

Drayton Area Community Foundation

BIO Girls - BIO Girls - Drayton, ND - 2022	821	
Drayton Christian Youth Ministries - Bible Camp Registration Assistance	821	
Drayton High School Trap Team - Purchase a shotgun for potential team members who do not have access to a shotgun to use.	275	
Drayton Sugar Bowl Senior Citizens - Floor covering for the big meeting room	821	
Ox Cart Trails Historical Society Inc - Blessing Museum Paint Project	821	
Pembina County Meals & Transportation - Reduced Medical Rides for Drayton area residents	<u>800</u>	4,359

Ellendale Area Community Foundation

Ellendale Area Arts Council - Kids Art	2,000	
Ellendale Area Arts Council - Concerts in the Park	2,000	
Ellendale Community Ambulance - Ambulance Replacement	5,000	
Ellendale Country Club - Pickleball Court	4,000	
Ellendale Fire Protection District - Washer Extractor	4,000	
Ellendale Historical Society - Van Meter Schoolhouse Moving & Preliminary Restoration	2,000	
Ellendale Park Board - Pool Deck Improvements/Additions	5,741	
Ellendale Police Department - New Office Equipment	500	
Ellendale Public Library - Reading For the Future	500	
Kedish House - Security System Monitor	700	
O.P.E.R.A., Inc. - ADA Parking Lot Project	2,000	
Prince of Peace Care Center - Wellness Courtyard	<u>2,000</u>	30,441

Emerado Community Endowment Fund

Emerado Volunteer Fire Department - Emerado Community Museum and Food Pantry	1,121	1,121
--	-------	-------

Enderlin Area Community Endowment Fund

Nome Schoolhouse	2,581	
SMP Health - Maryhill - Bladder Scanner	<u>2,581</u>	5,162

Fairmount Community Endowment Fund

Fairmount Community Center - To complete the installation of the LED sign	546	
Fairmount Park Board - Purchase of new aluminum bleacher planks for baseball, softball		

and football field use	\$ 546	
Fairmount Public School - For the Claire & Evelyn Hermes Scholarship Fund	2,000	
Fairmount Public School - All About Common Spaces	<u>546</u>	\$ 3,638
Finley Community Endowment Fund		
City of Finley - Finley Days - Finley's 125th Celebration	4,213	
Finley Park Board - Finley Park Reclamation Project	3,000	
Finley-Sharon Public Schools - Greenhouse	<u>3,000</u>	10,213
Galesburg Area Foundation		
Galesburg Community Housing - Unit Upgrade with a Heat Pump	2,000	
Galesburg Park Committee/City of Galesburg - Softball Field Dugout Benches and Cement Pads	<u>2,000</u>	4,000
Garrison Area Community Foundation		
Benedictine Living Community Garrison - Music Therapy	1,500	
Dolly Parton Imagination Library - Garrison School District 51 - Dolly Parton Imagination Library - Garrison Affiliate	500	
Garrison Area Resource Center & Food Pantry - Garrison Food Pantry Additional Services	2,143	
SkyFest Over Fort Stevenson - SkyFest Over Fort Stevenson	<u>1,500</u>	5,643
Glen Ullin Area Community Foundation & Ishmael & Rose Diede Charitable Fund for Glen Ullin		
Glen Ullin Senior Citizens Club - replace roof gutters and downspouts	500	
Crossroads Golf Association - Table & Chairs New Shelter	1,508	
Glen Ullin Park Board - Log Cabin Face Lift	1,507	
GUPPIES - Flag and flower project	1,508	
Marian Manor Healthcare Center - BestMove Stand Aid & Walkers	<u>1,000</u>	6,023
Golden Valley County Community Foundation		
Golden Valley County Historical Society - Painting the schoolhouse, installing gutters and fixing the garage door	1,468	
Golva Park Board - W.P. Building and Park Renovations	<u>2,000</u>	3,468
Grafton Community Foundation, Harry & Merle Stephenson Memorial Fund, Sig Jagielski Memorial Fund, Lynn D. Ebert Charitable Fund		
Grafton Parks & Recreation - Leistikow Park Outdoor City Fit Station	50,000	
Grafton Volunteer Fire Department - Battery operated chainsaws	2,504	
Save Our Strand - Save Our Strand Popcorn!	2,731	
St. Thomas Senior Citizens - Stand-assist chairs	800	
Great Plains Food Bank - Hunger Relief for Walsh County	4,000	
Save Our Strand - Save Our Strand Popcorn!	1,054	
Save Our Strand - 2020 Super Grant Award	<u>15,000</u>	76,089
Hankinson Community Endowment Fund		
Hankinson Community Betterment Club - Bread & Roses Dinner Show	800	
Hankinson Park Board - North Park Playground	<u>600</u>	1,400
Hannaford Area Community Foundation		
Hannaford Community Corporation - Library Roof Project	2,000	2,000
Harvey Area Community Foundation		
City of Harvey - Harvey Centennial Nature Park West Pathway	5,945	
Harvey Kiwanis Club - 2021-2022 Toddler Playset Project	<u>2,444</u>	8,389
Hatton Area Community Foundation		
Hatton Area Dollars for Scholars - Scholarship Funding	500	
Hatton Eielson Museum & Historical Society - Hatton Eielson Museum brochure printing	300	
Hatton Swimming Pool - Pool Furniture	<u>600</u>	1,400
Hazelton-Moffit-Braddock "Uncle T's" Community Foundation		
South Central Threshing Association - Playground Project South Central Threshing Association	600	600
Hebron Community Foundation & Ishmael & Rose Diede Charitable Fund for Hebron		
Hebron Park District - City Park Renewal Project	5,803	5,803
Hillsboro Community Foundation & Gary Bird Charitable Endowment Fund		
Generation II 4-H Club - Comfort/Goodie Bags for Pediatric Patients	140	
Hillsboro High School - Science Department Update	3,744	
Trail County Historical Society - Add standing seam steel roofing system to the Plummer House Museum	4,454	
Hillsboro Public School - snack program	256	
Our Saviors Lutheran Church - Hillsboro Back Pack Program	<u>256</u>	8,850
Hope Area Community Foundation		
American Legion Auxiliary Unit #18 of Hope - Furnace Replacement Hope American Legion Hall	1,000	
Hope Cannon Fund - Hope Cannon Fund	1,000	
Hope Dollars for Scholars - Hope Dollars for Scholars	1,000	
Hope Early Learning Center/ Little Learners - Refrigerator/ Freezer	1,500	

Hope Early Learning Center/ Little Learners - I-Pads and Osmo/Educational Learning Tools	\$ 1,500	
Hope Housing Development Corporation - Hope Housing Development Corporation		\$ 1,000
Hope Library - Book Organization	320	
Hope Park District - Park District Clean Up Trees Around Pool	1,000	
Hope Park District - Hope Pool Rules Signs	1,000	
Hope Park District - Spruce Trees for Cemetery	1,000	
Hope Park District - Sand for the Greens Golf Course	1,000	
Hope Volunteer Ambulance - Hope Ambulance Pulse CO-Oximeter	1,000	
Hope-Page Archery - Hope-Page Archery	1,000	
Jefferson-Steinke Legion Post 18 - Propane furnace replacement in the Hope American Legion Hall	1,000	
Sons of Legion - To install a new propane furnace in the legion Hall	1,000	
Steele County Historical Society - Windows for Arcade Building	<u>1,500</u>	16,820
Jamestown Community Foundation		
Anne Carlsen Center - Pathway For The Future	10,585	
Marketplace of Ideas/Marketplace for Kids, Inc. - Virtual Conversion of Marketplace for Kids Programming	<u>1,000</u>	11,585
Kenmare Area Community Foundation		
City of Donnybrook - New Speaker System for Community Center	2,100	
City of Kenmare - Chair Inventory for Community	700	
Kenmare Food Pantry - Beatification Project	2,500	
Society of St Stephens Food Pantry - Restocking Grocery Items	<u>2,000</u>	7,300
Killdeer Area Community Foundation		
USpireND - Healthy Families ND Services to Killdeer	2,715	2,715
Kindred Area Community Foundation		
Davenport Park Board - Shelter Picnic Tables	1,730	
Friends of Kindred Public Library - 2021 Wifi Replacement	800	
Kindred Area Ambulance Service - Kindred Area Ambulance Uniform Clothing	800	
Kindred Area Arts Partnership - Artist in Residence	500	
Kindred PTO - STEM	1,000	
Leonard Fire Protection District - Turnout Gear	<u>1,000</u>	5,830
Larimore Community Endowment Fund, Charles D. McCanna Fund, Vernon & Lila Halvorson Endowment Fund		
Bellevue Cemetery Association - Beautification, maintenance and upkeep	2,500	
Edna Ralston Public Library - Storage and general operating expenses	2,000	
Larimore Football - Lein Field Locker Room - Part 2	1,000	
Larimore Senior Citizens Club - Replacing Siding on Building's South Side	1,500	
Sox For Kids - Sox For Kids 2021	1,410	
Larimore Fire Protection District - Air Pack Project	5,500	
Larimore High School After Prom Party - Larimore High school junior class after prom party	1,000	
Larimore Museum - "Raising the Roof"	5,000	
Radiant Little Lambs Daycare Center - Kitchen Update and Covid-19 Relief	<u>4,000</u>	23,910
Larry J. Wilwant Fund for Pembina, ND		
City of Pembina Fire Department - Upgrade to LED lighting on Pumper truck	5,000	
Fort Pembina Historical Society - Signs, security and repair	1,000	
Lamoure Memorial Golf Course - Greens Maintenance Program and Decking Project	4,700	
Pembina 4th of July Celebration/City of Pembina - 4th of July Celebration	3,000	
Pembina 4th of July Celebration/City of Pembina - Fort Daer Beautification	2,450	
Pembina 4th of July Celebration/City of Pembina - Community Center Renovation Installment 14 of 15	10,000	
Pembina Ambulance Service Inc - Ambulance chassis	5,000	
Pembina Cemetery Association - Pembina Cemetery Kiosk	3,000	
Pembina County Backpack Program - Pembina County Backpack Program	1,800	
Pembina Skating Rink - Tin project and improvements	<u>4,700</u>	40,650
Lisbon Community Endowment Fund, Dale L. Brown Memorial Fund for Lisbon, Russell F. Brown Memorial Fund for Lisbon		
Fort Ransom Sodbusters Association - Saw Mill Project	2,000	
Lisbon Bronco Juniors - New Net System	1,500	
Lisbon Opera House Foundation - Furnace for Off Peak Heating	7,700	
Lisbon Public Library - Book Lease Program	10,456	
Lisbon Public Library - Replacement of Computers	234	
Oakwood Cemetery Association - Oakwood Cemetery	6,000	
Abuse Resource Network - Legal Fees	3,500	



“The best time to plant a tree was 20 years ago. The second best time is now.” Start an endowment fund at NDCF TODAY and provide a harvest for future generations.

CHI Health at Home - Home Health & Hospice - We Honor Veteran's Program/Volunteer Training/Bereavement Support	\$	2,500	
CHI Lisbon Health - Patient Table		7,500	
City of Lisbon - Winter at the Green Space / Additional Flags		3,000	
Lisbon Band & Choir/ Lisbon High School - Band and Choir Student Performance Shirts		2,000	
Lisbon High School Band - Update LHS Bronco Marching Band Percussion		4,500	
Lisbon Pool Preservers - Phase 3 - Wading Pool Remodel		37,980	
Lisbon Public Library - Replacement of Computers		1,080	
Lisbon Public Schools 2 - Lisbon Weekend Backpack Program		3,000	
Lisbon Public Schools 2 - Certified Nursing Assistant Training		5,000	
Lisbon Public Schools 2 - Junior High Girls Basketball Uniforms		2,000	
Lisbon Public Schools 2 - Dolly Parton's Imagination Library		800	
Oakwood Cemetery Association - Tinning the roof, residing of the small shop, replacing overhead door		11,000	
Riding For Dreams Adaptive Riding Program - re-siding		7,500	
Sand Hill Park Board - Horseshoe Pits		2,000	
Abuse Resource Network - LMSW Clinical Supervision		5,900	
Aliceton 4-H Club - Giving Garden		1,445	
City of Lisbon - NCT Trail Kiosk & Green Space		5,500	
City of Lisbon - Flowers & Hanging Baskets on Light Poles		6,000	
Great Plains Food Bank - Mobile Food Pantry		1,000	
Hospice of the Red River Valley - Grief Support Services		1,000	
Lisbon Fire Department - SCBA Thermal Imaging Camera & Face Masks		11,000	
Lisbon Public Library - Replacement of Computers		937	
Lisbon Public Schools 2 - Village Counseling Services		12,500	
Lisbon Public Schools 2 - Sources of Strength		1,000	
Lisbon Public Schools 2 - Community School Garden		828	
Lisbon Recreation Board - Pitching Equipment		3,500	
Lisbon Youth Trap Club LLC - Shooting Range Development		8,145	
Ransom County Water Resource District - Dead Colt Walkway		5,000	
Riding For Dreams Adaptive Riding Program - Outdoor Arena Build		7,500	
Maddock Community Foundation			
Harriman's Coffee House - Espresso Machines		845	
Little Bobcats Daycare - Start Up Costs Little Bobcats Daycare		1,405	
Maddock Community Center Corporation - Heating-Boiler		1,125	
Maddock Community Historical Society - Metal Roof Covering for the Wore Before Store		845	
Maddock Memorial Home - Steel Roofing		1,405	
Maddock Opera House Association - Harriman Building Addition		565	
Maddock Public School - Playground Remodeling Project		1,405	
Maddock Sports Boosters - Maddock Gymnasium Floor		1,405	
			9,000
McKenzie County Community Foundation			
Dakota Children's Advocacy Center - Mckenzie County Child Abuse Satellite Clinic		2,000	
Long X Arts Foundation - Art on Main (Formerly Art in the Park)		2,000	
McKenzie County Heritage Association - Tater Tots		500	
McKenzie County Imagination Library - McKenzie County Imagination Library Fundraising		500	
Running Free - Running Free awareness runs, both the Santa Run and the Suicide Awareness Run		2,000	
T4 - Bismarck Public Schools - T4 Tools Trades Torque Tech - Tomorrow's innovative			
VisionWest ND - Hispanic Christmas celebration		1,200	
Workforce is in Our Schools Today!		500	

WCHS Music Boosters - Spring Band Trip to Festival Disney, Disneyworld, Orlando, FL	\$	1,000	\$	9,700
Milnor Community Foundation, Dale L. Brown Memorial Fund for Milnor, Russell F. Brown Memorial Fund for Milnor				
City of Milnor - Main Street Sidewalks, Curb, Gutter & Lighting		50,000		
City of Milnor - Milnor Playground Project		8,800		
Lakeview Golf Course Assoc - Building Improvements & Freezers		10,500		
Milnor Recreation Board Milnor Park Board - Park Concession Stand Updates		7,500		
Milnor School District - Steam Equipment		5,400		
Milnor School District - School Based Mental Health		10,000		
Milnor School District - Lego League		1,700		
City of Milnor - Milnor Pocket Park		4,000		
City of Milnor Park District - Art in the Park		1,200		
City of Milnor Park District - 2021 Summer Baseball Program		3,250		
City of Milnor Park District - Pool Liner		55,550		
Great Plains Food Bank - Mobile Food Pantry		1,000		
Milnor Merchants Club - Main St Flowers		1,200		
Milnor Scholarship Association - Milnor Scholarships		10,000		
Milnor School District - Playground Update		20,000		190,100
Minnewaukan Community Endowment Fund				
Minnewaukan 55 Club - Minnewaukan 55 Club Structure Projects		2,800		
Minnewaukan Rural Fire Protection District - Fire Hall Standby Generator		2,800		5,600
Minot Community Endowment Fund, Charles & Madge Westlie Endowment Fund, T.A. & Anna Solheim Endowment Fund				
Mouse River Player Community Theater - MRP lobby renovation project		5,000		
Northern Plains Children's Advocacy Center - NPCAC Play Therapy		3,000		
Operation Homefront, Inc. - Holiday Meals for Military (HMFM)		2,500		
Project BEE - Minot Coordinated Entry Startup		4,797		
Companions for Children, Inc. - Lunch Pals: School-Based Youth Mentoring		2,500		
Gymagic Gymnastics - Gymagic Adaptive Gymnastics Classes		2,200		
Magic City Blessing Bank - Magic City Blessing Bank		5,000		
Minot Area Chamber EDC - Junior Achievement		3,000		
Minot Area Community Foundation - 1,000 Trees for Minot Fund - 1,000 Trees for Minot		2,500		
Minot Area Homeless Coalition Inc - Direct services to the homeless or about to become homeless		2,500		
Minot Commission on Aging, Inc. - Senior Nutrition Program		5,000		
Minot Rotary Club - Rotary 4 Recreation		2,500		
Minot Social Club for Exceptional Persons Inc - Sponsor of the Month		1,000		
The Welcome Table - The Lord's Cupboard Food Pantry		5,000		
Minot Rural Fire Protection District - New Structural Firefighting gear		20,000		66,497
Mohall Area Community Foundation				
City of Mohall - Splash Pad Project		1,200		
Renville- Bottineau Senior Citizen's Homes, Inc. - RBSCH Inc. 2021 Updates		750		
Zion Lutheran Church - School Supply Giveaway Program		450		2,400
Mott-Regent Community Foundation & Ishmael & Rose Diede Charitable Fund for Mott/Regent				
Hettinger County Historical Society - Building updates to enhance tourism		1,392		
Regent Consumers Coop - Meat Cooler Project		4,500		5,892
New England Community Foundation & Ishmael & Rose Diede Charitable Fund for New England				
New England Booster Club - Missoula Children's Theater		3,000		
New England Lions Club #3238 - Lions Park Improvements & Additions		2,500		
Second Chances Volunteers - Furever Full Pet Food Bank Distributions		475		5,975
New Rockford Community Foundation				
Fraternal Order of Eagles Aerie 2923 - Building Updates		1,500		
New Rockford Area Betterment Corporation - Wonder Lanes Bowling Alley Renovation Project		1,500		
New Rockford Park District - Wood Fiber Chips for Surfacing at Playgrounds		1,500		4,500
New Salem Area Community Foundation				
Almont Rural Fire Dept. - Radios and Pagers		20,000		
Missouri Slope Areawide United Way - Dolly Parton Imagination Library		1,250		
Morton County Parks - Fish Creek Shelter Repairs		1,830		
New Salem Almont Schools - Chair Lift		1,200		
New Salem Ambulance Service - Radio Upgrade		24,800		
New Salem Fire Department - Rescue Bags / Extrication Tools		5,024		54,104
Oakes Area Community Foundation				
Dickey County Master Gardeners - Master Gardener - Healing Garden		3,500		

Growing Small Towns - New Dickey County BIO Girls Site	\$ 1,000	
Oakes Boys Scout - Park Equipment Upgrade at Hockenberry Park	5,135	
SRCTC DECA - Keep the Blind in Mind	7,500	
Tiny Tornadoes - Fridge Replacement	1,290	\$ 18,425
Park River Community Endowment Fund & Chris Rostvet Memorial Fund		
Park River Area Public School - Scholarship Funding	500	
American Legion Paul Farup Post #147 - Grade & Pave Parking Area	7,650	
Hillcrest Country Club, Inc - Country Club Cart Storage Repair/Restoration	5,000	
Kiddie Korner Preschool & Daycare, Inc. - Security camera installation	5,000	
Park River Volunteer Fire Dept. - Safety Tools	2,500	20,650
Parshall Area Community Foundation		
American Legion Auxiliary Unit 121 - Parshall Auxiiary Cares	1,000	
Arthur Solie American Legion Post 121 - Upgrade Entryway	3,000	
Parshall 2000 INC. - AC unit	3,500	
Parshall Honor Society - Close Up	1,000	
Parshall Public Library - Library Books	837	
Parshall Public Schools - Braves School Store	1,500	10,837
Pierce County Endowment Fund		
Geographical Center Historical Society - The Geographical Center Blacksmithing Rendezvous	900	
Tri-County Senior Meals & Services - Tri-County Nutritious Service for 60 and Older Adults	3,500	4,400
Powers Lake Community Foundation Endowment		
City of Powers Lake - Powers Lake Food Pantry Holiday Baskets	350	350
Richardton Area Community Foundation		
American Legion Auxiliary Unit 180 - Replace Legion clubroom dining tables	500	
Lt Theo R Zech American Legion Post #180 - Carpet Replacement	2,500	
Raider Booster Club - Football Light pole pads	2,500	
Raider Pee Wee Program - New Helmets	2,000	
Richardton Baseball Club - Electrical expansion	2,500	
Richardton Health Center - Resident Services Transportation	3,500	
Richardton Park District - Richardton Swimming Pool Improvements	2,500	
Richardton Senior Citizens - Kitchen, Mens Bathroom, West Entrance Improvements	1,300	17,300
Richland Wilkin Community Foundation & Elmer & Lucille Hoffert Fund		
City of Breckenridge-Family Community Center - Family Community/Teen Center		
After-School Program outdoor PA system	1,500	
Friends of the Leach Public Library - Historical Newspaper Digitization Project	1,500	
Red Door Art Gallery & Museum - Security Camera System	1,500	
Someplace Safe - Security Equipment & Resources for Local Victims and Survivors of Crime and Abuse	1,500	
Someplace Safe - Someplace Safe Safety Planning Project: Security Packs for Survivors of Crime and Abuse	1,500	
Southeastern North Dakota Community Action Agency - Meeting Space in New Office in Wahpeton	1,500	
United Methodist Church - Community Choir and Orchestra Christmas Cantata	1,500	
Valley Lake Boys Home - Summer Work Program	1,500	
Valley Lake Boys Home - Ending sexual abuse and/or sexual exploitation of children	3,000	
Wahpeton/Breckenridge Headwaters Music Festival - Headwaters Music Festival	2,500	17,500
Richland Wilkin Community Foundation Annual Campaign Fund		
BIO Girls - BIO Girls Wahpeton-Breckenridge, Abercrombie-Colfax & Wyndmere -Lidgerwood - 2022	2,500	
Breckenridge Youth Program - Economic Resiliency Project for Breckenridge Youth Program (BYP)	2,000	
Northern Lights Council of Boy Scouts of America Inc. - Comprehensive Youth Development	2,500	
PARTNERS - Foot Care Program	1,500	
Red Door Art Gallery & Museum - Equipment/Printer Lease & Professional Development Expenses	1,500	
Richland Wilkin Emergency Food Pantry - Food for Kids	5,000	
Richland-Wilkin Kinship - Activities and Operations	10,000	
Someplace Safe - Financial Resources for Increased Client Load	2,500	
Southeastern North Dakota Community Action Agency - SENDCAA Emergency Assistance in Richland County	5,000	
Three Rivers Crisis Center - Three Rivers Crisis Center Kids Konnection	24,000	
University of Minnesota Foundation, for Wilkin County 4-H Youth Programs - Afterschool and Day Camps	1,000	57,500
Rolla Community Endowment Fund		
City of Rolla Forestry - Flowers for Main	1,000	

Our Saviors Lutheran Church - Community Garden & Produce Pantry	\$ 585	
Rolette County Public Health District - Clinic Expansion Project	1,000	
Rolla American Legion Baseball - New Equipment Field Management	3,769	
Rolla Park Board - City Park Resurfacing & New Toddler Play Area	2,500	
Rolla Public Library - Shelving replacement plan	1,033	
Rolla Volunteer Fire Department - Pagers & Scene Lights	1,500	\$ 11,387
Rugby Community Endowment Fund		
Geographical Center Historical Society - 2022 Kids Summer Programming	2,000	
Pierce County Food Pantry - Christmas Food Baskets	1,654	
Rugby Lions - Rugby Lions Music in the Park	3,000	
Rugby's Dolly Parton's Imagination Library - Rugby's Dolly Parton's Imagination Library	1,000	
Tri-County Senior Meals & Services - Tri-County Senior Meals & Services - Nutrition Services	2,000	
Tunbridge Lutheran Church Preservation Society - Tunbridge Lutheran Church Steeple Renovation	1,000	
Village Arts, Inc. - Theater seating project	10,000	20,654
Sherwood/Antler Community Foundation		
Antler Rural Fire Protection District - Shelving, tool chest & work bench.	400	
City of Sherwood - Sherwood City Park Improvements	400	
Zion Lutheran Church - School Supply Giveaway Program	180	980
Stanley Area Community Foundation		
Blue Jay Boosters - Will Athletic Complex Storage/Track Equipment	15,000	
Mountrail County Aquatic Foundation, Inc - A new Metasys User Interface upgrade	8,500	
Stanley Parks & Recreation - Ray Rude Outdoor Pool/Splash Pad Renovation	45,000	
Mountrail Community Food Pantry - Donation From John & Cecilia Enns	50	68,550
Strasburg Area Community Foundation		
City of Strasburg - Welk Park playground equipment	500	
Emmons County Ministerial Association - Emmons County Food Pantry	500	
Emmons County Museum - records dept.	500	
Missouri Slope Areawide United Way - Dolly Parton's Imagination Library	100	
Romanus F. Wagner Post No 6264 VFW - Accent lighting on the tank in our Memorial Park	500	
Strasburg Nursing Home - Outdoor Visitation Seating	500	2,600
Tioga Community Foundation		
Tioga American Legion - Tioga American Legion Baseball Field Improvements	4,700	4,700
Walhalla Area Community Foundation		
Gorge Arts & Heritage Council - Walla Theatre - Air Conditioning System	3,742	
Walhalla Community Hospital Association - Apollo Whirlpool Bath tub replacement	3,742	7,484
Williston Area Community Foundation and the George & Helen Christensen Family Charitable Fund		
Dakota Children's Advocacy Center - Child Abuse Outreach Services for Western ND	450	2,500
Wishek Area Community Foundation		
City of Wishek - Park Board Basketball Hoop	500	
Wishek Public School - School Weight Room	266	766
Total Local Community Foundation Funds		1,547,805

Scholarship Funds

Allen Giese Scholarship Fund		
ND FFA Foundation - Scholarships	2,000	2,000
Alton Carl Wolfer Memorial Scholarship Fund		
Emily Just	175	175
American Legion Riders ND District #2 Scholarship		
Jordan Erovick	500	
Lauren McPherson	500	1,000
Arnold & Dorothy Holm Scholarship Non-Endowment Fund		
Kylar Maxine Moltzan	725	725
Audrey Doyle Scholarship Fund		
Samantha Opal Mogard	925	925
BankNorth Scholarship Fund		
Sadie Hansen	1,000	
Erik Haugen	1,000	2,000
Benjamin Berg Memorial Scholarship Fund		
Davis Houle	500	
Ryan Keup	1,000	
Jared Sarsten	500	2,000
Bert Rotnem Scholarship Fund		
Vanessa Cooper	2,175	

Layne Gemmill	\$ 1,800		Gabriella Hecker	\$ 1,000	
Madilyn Gerszewski	1,800		Rachel Heinen	1,150	
Samuel Hagen	<u>2,175</u>	\$ 7,950	Mason Hibbs	1,650	
Billings County Scholarship Fund			Ethan Hirschfeld	1,150	
Shadera Burian	725	725	Cassidy Hughes	1,000	
Bismarck Rotary Club Scholarship Fund & Carole Bordenkircher Kralicek Scholarship Fund			Muhammad Jallow	1,000	
Erin Becker	2,500		Nathaniel Jilek	2,000	
Megha Bharadwaj	2,500		Anna Kessel	2,000	
Kyleigh Dahl	2,500		Jacob Kessel	675	
Hattie Fitterer	2,500		Katie Kessel	1,150	
Micah Schlittenhardt	<u>2,500</u>	12,500	Abbigail Kubas	1,150	
Bismarck Schools Scholarship Fund			Karter Kudrna	1,000	
Bridger Anderson	825		Sydney Lantz	650	
Keeley Sperle	<u>825</u>	1,650	Kaia Lehman	1,000	
Brian Meehl Memorial Scholarship Fund			Daniel Mensah	1,000	
Grace Day	250		Igor Niyimbona	1,000	
Conor Schall	<u>250</u>	500	Griffin Obrigewitch	1,000	
Burton Louis Gewalt Meritorious Fund			Lorenzo Palacios	1,000	
Madelyn Anderson	1,200		Ashley Pavlicek	1,650	
Austin Erickson	1,200		Madison Peterson	1,000	
Daniel Erlandson	1,200		Leslie Ramos	650	
Paige Kelsen	1,200		James Rehbein	1,000	
Logan Mammenga	1,200		Nicolette Reis	1,150	
Kaylin Nicholson	1,200		Ava Schneider	1,000	
Adam Ohm	1,200		Maya Thompson	1,000	
Connor Twidwell	<u>1,200</u>	9,600	Jack Unruh	1,000	
Conrad & Arthur Nisstad Memorial Scholarship Fund			Kara Wanner	1,150	
Hannah Ehlers	3,950		Amaya Willer	1,150	
Janae Johnson	3,950		Asia Willer	<u>1,650</u>	\$ 51,925
Brooke Topp	<u>3,950</u>	11,850	Dr. Roger E. Meisner Veterinary Medicine Educational Fund		
Curtis Stern Memorial Scholarship Fund			Madison Ann Baumgartner	2,500	
Shawna Pantzke	5,000	5,000	Anne Brien	2,500	
Dawn Marie Stoik Memorial Athletic Scholarship Fund			Jennifer Campbell	4,500	
Gracie May Cole	200	200	Reanne Erickson	2,500	
Dean & Eleanor Miller Memorial Scholarship Fund			Morgan Gentzkow	2,500	
Elias Markusen	625	625	Shelby Hanson	3,000	
Donald & Irene Metzen Scholarship Fund			Taylor Knudson	3,000	
Milnor Public School	1,500	1,500	Talyssa Kvanvig	4,000	
Donald B. Sass Scholarship Fund			Karissa Limesand	2,500	
Jadyn Guidinger	1,150	1,150	Kylee Nelson	4,150	
Donna Maston Charitable Scholarship Fund			Kaitlyn Peterson	4,000	
Emma Christine Mogen	1,000		Cassie Podliska	4,000	
Jaycie Marie Rau	<u>1,000</u>	2,000	Jasmine Ridl	2,500	
Dr. Donald P. Miller Memorial Scholarship Fund			Kailer Riedman	2,500	
Ben Robert Hulm	1,025	1,025	Codi Schaper	2,500	
Dr. Henry Springer Scholarship Fund			Paige Schmidt	3,000	
Landon Aman	1,000		Blaire Schnabel	5,000	
Mason Anchondo	1,000		Abigail Waloch-Tweeten	3,000	
Garin Anderson	675		Allison Wieler	<u>2,500</u>	60,150
Alandra Andres	1,150		Dushinske & Jamison Water Resources Scholarship Fund		
Jayson Andres	1,000		Allen Farrell	1,500	
Amanda Baker	1,650		Noah Helgoe	1,500	
Paige Balliet	1,000		Addyson Hughes	1,500	
Logan Bentz	675		Kearyn Nelsen	<u>1,500</u>	6,000
Mattilyn Biel	1,000		EllaRae Kelly Memorial Scholarship Fund		
Sydney Binstock	1,000		Gracie May Cole	500	500
Peyton Blair	1,000		Ellendale Area Scholarship Fund		
Emaline Bozovsky	1,000		Bethany Morehead	400	
Jacob Daniel	2,000		Joshua Olson	1,000	
Sarah Diem	1,650		Abigail Peterson	1,000	
Cole Fitterer	1,150		Cody Winter	<u>400</u>	2,800
Joyce Hauck	1,000		Ellendale Farmers Union Scholarship Fund		
Trey Haugen	1,000		Ethan Bergeman	625	

Hunter Gallagher	\$ 625	
Emily Hamilton	625	
Alexis Kempf	625	
Christina Mathias	625	
Joshua Olson	<u>1,000</u>	\$ 4,125
Emil Nickl Scholarship Fund		
Paris Mensing	450	450
Esther Hample Scholarship Fund		
Paige Lang	1,600	
Emily Nelson	<u>1,600</u>	3,200
Fay & Irene Sanders Memorial Scholarship Fund		
Erik Haugen	575	575
Frank & Emilie Blasl Memorial Scholarship Fund		
Kaylie Schlecht	225	225
Fred & Henrietta Kerian Memorial Scholarship Fund		
Makenna Fenner	325	325
Fred & Ida Osmon Scholarship Fund		
Taylor Johnson	375	375
Garry Opp Memorial Scholarship Fund		
Conor Schall	750	750
George H. Bliven Scholarship Fund		
Megan Gebro	125	125
Gerald W. & Edith F. Wallace Scholarship Fund		
Nathan Zent	3,402	3,402
Grace Taylor Stone Scholarship Fund		
Larimore Public School District #44	10,000	10,000
Guy Larson Scholarship Fund		
Morgan Hartzel	150	150
Helen & Ed Leiby Scholarship Fund in Science & Mathematics		
Joshua Olson	2,625	2,625
Helen & Everett Barta Scholarship Fund		
Allison Dutton	800	
Jayden Rath	<u>800</u>	1,600
Hettinger Class of 1996 Memorial Scholarship Non-Endowment		
Hettinger Public School	250	250
Holli Kautzman Memorial Scholarship Fund		
Brooklyn Elizabeth Vollmer	1,500	1,500
Inspired Woman Scholarship Fund		
Stephanie Jorritsma	1,000	1,000
Ishmael & Rose Diede Charitable Fund for Scholarships		
Caleb Candrian	2,988	
Justice Dakken	600	
Ethan Duppong	1,175	
Kayla Ehlis	2,000	
Leah Ehlis	2,000	
Michaela Gerving	725	
Alexius Gietzen	725	
Garrett Kuhn	1,175	
Jordan Ottmar	2,988	
Savana Reinbold	600	
Chase Remboldt	725	
Kristin Schaaf	725	
Sierra Schaff	2,600	
Lindsey Schirado	725	
Zayden Schmalenberger	600	
Kane Regional Unruh	975	
Stetson Urlacher	<u>2,000</u>	23,325
J. Garvin Jacobson Scholarship Fund		
Corynna Pearl Turnquist	600	600
Jean A. Argue Scholarship Fund		
Brandon Albrecht	975	975
Jean E. Crabtree Memorial Scholarship Fund		
Abigail Peterson	175	175

Jeff Burgess Memorial Scholarship Fund		
Hattie Fitterer	\$ 1,000	
Jordan Porter	<u>1,000</u>	\$ 2,000
Jim & Barbara Blaine Scholarship Fund		
Austin Horning	925	925
Joan Multhaup Scholarship Fund		
Kayla Ehlis	375	375
John & Yvonne Cronquist Midway Scholarship Fund		
Haven Korynta	1,275	
April Schmitz	1,000	
Rachaele Soderman	<u>2,000</u>	4,275
John E. Conneran Memorial Scholarship		
Inc. Grand Forks Foundation for Education	1,000	1,000
Kathy Eggmann Memorial Scholarship Fund		
Jillian McCusker	100	100
Kenneth & Arline Lueck Scholarship Fund		
Allison Roorda	1,000	1,000
Kenneth & Leila Morris Dental Scholarship Fund		
Hannah Brossart	2,050	
Peyton G Halverson	<u>2,050</u>	4,100
Kirstin Skari Memorial Scholarship Fund		
Kaleigh DeGeldere	750	750
Kiwanis - Meier Scholarship Fund		
Landon John Woinarowicz	150	150
Kyla Morehead Memorial Scholarship Fund		
Joshua Olson	150	150
Larimore Public Schools Scholarship Fund		
Larimore Public School District #44	2,400	2,400
Lars & Hilda Svendsgaard Scholarship Fund		
Brianna Fike	3,050	
Jaxon Fike	3,050	
Madison Jones	<u>3,050</u>	9,150
Leo Billey Memorial Scholarship Fund		
Sadie Hansen	3,150	
Erik Haugen	3,150	
Joshua Olson	5,000	
Abigail Peterson	7,650	
Chloe Schaefer	3,150	
Conor Schall	<u>3,150</u>	25,250
Les Melroe Gwinner Scholarship Fund		
KyAnna Halmrast	1,100	1,100
Lewis Lilyquist Scholarship Fund		
Lisbon Public Schools 2	325	325
Lloyd & Martha Haas Scholarship Fund		
Stephanie Rose Burns	1,125	1,125
Lloyd A. Engh North Star Masonic Lodge Fund		
Gracie May Cole	1,000	1,000
Lynn Berg Memorial Scholarship Fund		
Grafton Educational Foundation	666	666
Margaret Geiger Green Scholarship Fund		

Estate planning is a crucial part of financial wellness. NDCF is here to help. Visit our Legacy Planning website to learn more or call us for a free, confidential conversation about the people you want to take care of and the legacy you want to leave. www.NDCF.net/Plan



Natalie Hunter	325	325	Elias Markusen	575	575
Marv Rockstad Memorial Scholarship Fund	\$	\$	Paul Daniel Hougen Memorial Athletic Scholarship Fund	\$	\$
Tessa Lynn Melland	775	775	Chloe Aamodt	750	750
Mary Goldader (Johnson) Memorial Scholarship Fund			Paulie (Paula) Paul Memorial Scholarship Fund		
Grace Day	450	450	Hattie Fitterer	300	300
Max Zelenak Scholarship Fund			Raider Scholarship Fund		
Grace Day	<u>1,200</u>		Katrina Faulhaber	<u>500</u>	
Madison Reiser	1,200	2,400	Ashton Hoff	500	1,000
Michigan Scholarship Fund			Ray & Hazel Wuolu Memorial Scholarship		
Brynn Kroke	<u>1,000</u>		Chloe Schaefer	1,000	1,000
Mason Lenz	1,000	2,000	Ray & Lillian Gulbranson Scholarship Fund		
Monroe Scheflo Scholarship Fund			Cody Donald Reese	<u>500</u>	
Cauy Justin Hartel	1,000	1,000	Alex Olivia Sims	525	1,025
ND Aviation Association Scholarship Non-Endowment Fund			Ray Scholarship Fund		
Carson Calhoun	1,000		Abby Sigvaldsen	1,425	1,425
Noah Cunningham	1,000		Richard & Christina Fiedler Scholarship Fund		
Justin Ormiston	1,000		Ryan Doe	450	450
Ethan Sprague	1,000		Rick & Nancy Warner Bigler Scholarship Fund		
Cooper Strand	<u>1,000</u>		Grace Day	<u>1,000</u>	
Dylan Weigel	1,000	6,000	Alex Nelson	675	1,675
ND Career & Technical Education Endowment Fund			Robert E. Chase Scholarship Fund		
McKenzie Johnson	500	500	Ethan Duppong	264	
ND Farmers Union Co-op House Scholarship Fund			Mandan Public Schools Foundation for Education	<u>5,148</u>	
Christy Finck	1,240		Sierra Schaff	264	5,676
Breana Hauser	1,240		Ronald D. Liudahl Scholarship Fund		
Daniel Hinkle	1,240		Garrett Lund	1,050	1,050
Johnathan Ketelsen	<u>1,240</u>		Rugby High School Alumni Scholarship Fund		
Joshua Olson	1,240	6,200	Sarah Blessum 500		
ND Farmers Union Scholarship Fund			Riley Grove	<u>500</u>	
Peter J Bryn	625		Isabella McCabe	500	1,500
Karly Just	<u>625</u>		Rupert J. Rehberg Scholarship Fund		
MacKenna Toyne	625	1,875	Leslie I Burr	5,000	
ND Farmers Union-Alan Bergman Scholarship Fund			Hailey Elizabeth Carns	4,000	
Anthony Banish	1,000		Gracie Ruth Dahl	4,000	
Sammie Weber	<u>1,000</u>		Anna Dragseth	4,000	
Janae Weigel	1,000	3,000	Joseph Ralph Dube	5,000	
ND Veterinary Medical Association Scholarship Fund			Tianna Ruth Dwyer	5,000	
Madison Ann Baumgartner	<u>750</u>		Abby Ireland Engebretson	5,000	
Anne Brien	500	1,250	Jackson James Faller	4,000	
ND Veterinary Medical Association Scholarship Non-Endowment Fund			Riley Mae Faller	5,000	
Anne Brien	250		Sydney Faller	4,000	
Peyton Bush	400		Christopher Jerome Ferry	4,000	
Andrew Fugleberg	400		Kendra Dawn Foreman	4,000	
Morgan Gentzkow	400		Alician Michell Garcia	5,000	
Shelby Hanson	400		Olivia Gronos	4,000	
Talyssa Kvanvig	400		Braedon Gumke	4,000	
Kaitlyn Peterson	400		Haleigh Hanhart	4,000	
Jasmine Ridl	400		Paul Riley Hardy	5,000	
Kailer Riedman	400		Cauy Justin Hartel	4,000	
Codi Schaper	400		Laney Hartel	5,000	
Blaire Schnabel	750		Brock Mitchael Haugeberg	4,000	
Abigail Waloch-Tweeten	<u>400</u>		Mikka Lynn Haugeberg	4,000	
Allison Wieler	400	5,400	Scout Marinna Hofer	5,000	
NDCF/ND Nurses Association Scholarship Fund			Ashley Elizabeth Holen	5,000	
North Dakota Center for Nursing	3,900	3,900	Jessen Timothy Homiston	4,000	
Noela Kingsbury Memorial Scholarship Fund			Reese Owen Johnson	4,000	
Stephanie Rose Burns	150	150	Tayle Kaczmar	4,000	
North Dakota Nurse Practitioner Association Scholarship Fund			Drew LeBrun	5,000	
Natalie Carriveau	<u>1,000</u>		Michelle Loan	5,000	
Cassie Holt	1,000	2,000	Zanna Rae Lyon	4,000	
Oakes VFW Scholarship Fund			Abby Marie McCauley	4,000	
Madison Reiser	825	825	Jena Messer	5,000	
Park River Scholarship Fund			Asher David Neuman Mitchell	4,000	

Bradyn Richard Modine	\$	5,000	
Brooke Ann Mogen		4,000	
Emma Christine Mogen		5,000	
Kylar Maxine Moltzan		5,000	
Hunter Michael Neether		4,000	
Kristen Kae Ninneman		5,000	
Lindsay Sue Peterson		4,000	
Jaycie Marie Rau		4,000	
Cody Donald Reese		5,000	
Sylvia Quevene Rodriguez-Mullins		5,000	
Levi Norman Sanford		5,000	
Sydney Ryan Sanford		4,000	
BayLee L Schlothauer		5,000	
Jade Lee Schlothauer		4,000	
Alex Olivia Sims		5,000	
Morgan Nicole Slade		5,000	
Andrew Clay Trotter		5,000	
Carlton John Turnquist		5,000	
Corynna Pearl Turnquist		5,000	
Jayden Nicole Uhlich		4,000	
Ashleigh Mary Voll		4,000	
Quinn Lokelani Voll		5,000	
Julianna Snow White		5,000	
Carter John Zenz		5,000	
Sally Brash Memorial Scholarship Fund			\$ 253,000
Sargent Central Public Schools		11,350	11,350
Sheila Coleman Memorial Scholarship Fund			
Sadie Hansen		750	750
Sheldon Mizpah Scholarship Fund			
Raelee Joyce Ekeren Bartholomay		400	400
Stanley & Julie Buxa Nursing Scholarship Fund			
Tessa Lynn Melland		350	350
Sue Podenski Scholarship Fund			
Alex Huber		225	225
The Theo Torgerson Scholarship Fund			
Conner A Carriere		800	800
Tiny & Joyce Gebhardt Scholarship Fund			
Thomas Tiegs		750	750
Tom & Ruth Bettenhausen Scholarship Fund			
Madison Ann Baumgartner		1,000	
Emily Dorsey		900	
Paige Schmidt		1,000	2,900
Tom Sturdevant Scholarship Fund			
Taylor DeCoteau		200	200
Travis Allen Hohbein Memorial Scholarship Fund			
Paige Ressler		500	500
U.S. Durum Growers Association Scholarship Fund			
Warrick Hollifield Dilse		1,000	1,000
UTTC Johnson Scholarship Foundation Fund			
United Tribes Technical College		8,618	
United Tribes Technical College		19,710	28,327
Victor & Verna Johnson Scholarship Fund			
Conner A Carriere		5,300	5,300
Watford City High School Alumni Scholarship Fund			
Hannah Marie Casey		250	
Alician Michell Garcia		250	500
Scholarships Returned		-12,063	-12,063
Total Scholarship Funds			646,833
Organization Endowment Funds			
Abused Adult Resource Center Endowment Fund		1,512	1,512
Ashley Public Library Endowment Fund		183	183
Badlands Ministries Endowment Fund		5,386	5,386

Bethel Lutheran Church Endowment Fund	\$	1,667	\$	1,667
Bismarck Art & Galleries Association Endowment Fund		481		481
Catholic Charities North Dakota Endowment Fund		4,970		4,970
Cavalier Jail / Library Building Endowment Fund				
Pembina County Historical Society		87		87
Cooperstown Bible Camp Endowment Fund		7,725		7,725
Dickinson Public Library Foundation Endowment		1,178		1,178
Dickinson Rotary Charitable Endowment Fund				
Badlands Crime Stoppers, Inc.		525		525
Best Friends Mentoring Program		775		775
Enderlin Museum Endowment Fund		1,969		1,969
Esmond Jubilee Endowment Fund		415		415
Farm Rescue Foundation		2,847		2,847
Gateway to Science Endowment Fund		4,899		4,899
Historic Elmwood Endowment Fund		578		578
Icelandic Park Fund				
North Dakota Parks & Recreation Department		462		462
Icelandic State Park Centennial Project Endowment Fund				
North Dakota Parks & Recreation Department		13,184		13,184
Icelandic State Park Heritage Building Endowment Fund				
North Dakota Parks & Recreation Department		3,816		3,816
Jeremiah Program Fargo Moorhead Scheel Barry Endowment		5,763		5,763
Kalloch Eunice Gronvold House Endowment Fund				
Geographical Center Historical Society		1,183		1,183
Leach Library Fund		517		517
Lisbon Public Library Fund		589		589
Little Flower Fund				
Little Flower Catholic School		1,060		1,060
Little Flower Fund II Fund				
Little Flower Catholic School		1,178		1,178
Lord of Life Lutheran Church Endowment Fund		7,233		7,233
Mandan Presbyterian Church Endowment Fund		1,109		1,109
Martin's Lutheran Church Endowment Fund		9,351		9,351
Missouri Slope Areawide United Way Endowment Fund		57,601		57,601
ND Real Estate Educational Fund				
North Dakota Association of REALTORS		6,500		6,500
North Dakota FFA Foundation Endowment Fund		1,000		1,000
Northwood Deaconess Health Center Endowment		471		471
Oberon "55" Club Endowment Fund - City of Oberon		620		620
Pembina County Historical Society Fund		3,777		3,777
Prairie Public Television Funds				
Bismarck Prairie Public Television Fund		1,640		1,640
Bremer Banks Prairie Public Television Fund		2,569		2,569
Prairie Public TV Endowment Fund		5,900		10,108
Red Willow Ministries Endowment Fund		4,000		4,000
Sacred Heart Benedictine Foundation Endowment Fund		2,333		2,333
St. Anthony's Church Endowment Fund				
Pembina County Historical Society		1,427		1,427
Sitting Bull College Endowment Fund		3,785		3,785
Sitting Bull College Scholarship Fund		112		112
Skuli Pall Benedictson Endowment Fund				
North Dakota Parks & Recreation Department		3,799		3,799
Souris Valley United Way-Molly Wallin Endowment Fund		15,000		15,000
The Bismarck Library Foundation, Inc. Endowment Fund		3,493		3,493
Vision West ND Endowment Fund				
Benefit Fund of McKenzie County Healthcare Systems		2,318		2,318
Divide County Job Development Authority		2,000		2,000
Washburn Volunteer Ambulance Service Endowment Fund		1,791		1,791
Women's Care Clinic Endowment Fund		3,303		3,303
Women's Care Clinic Endowment Fund (Bismarck)		2,010		2,010
Young Life North Dakota (Bismarck) Fund		3,332		3,332
Total Organization Funds				209,422

School Funds

Alexander Public School Foundation Fund			
Black Hills State University - Tianna Dwyer Scholarship	\$	500	
Southwestern Oregon Community College - Brianna Yancey Scholarship		500	
University of Mary - Corynna Turnquist Scholarship		500	
Williston State College - Alex Sims Scholarship		500	
Williston State College - Drew LeBrun Scholarship		500	\$ 2,500
Grenora Public School Foundation Fund		1,175	1,175
Lidgerwood Public School Foundation		5,485	5,485
McKenzie County Public School Dist #1 Foundation Fund Non-Endowment			
Book Drive Initiative		10,000	
Wolves Pride Pantry		2,000	
Planting Trees Project		2,000	
ONEOK Distribution		4,963	
Community Cleanup Choice Ready Component		2,000	
Digital Kiosk for WCHS		9,360	
McKenzie County Public School Foundation District #1 DARE Project Fund			
Creative Product Sourcing 137440		2,174	32,496
Northern Cass Education Foundation		3,113	3,113
Total School Funds			44,768

Restricted Funds

31:8 Project		33,950	33,950
Adolph E. Shirley Memorial Endowment Fund			
Anne Carlsen Center		1,004	
Concordia College - Moorhead		1,004	
Salvation Army (Bismarck)		2,008	
St. Aloisius Medical Center		1,004	
Vang Church & Cemetery Care Fund		1,003	6,023
Alphonse & Loretta Hiltner Endowment Fund			
St. Alphonsus Catholic Church		1,450	
St. Alphonsus School Foundation		1,450	2,900
Andvari Hallson Cemetery Association Endowment Fund		769	769
Anne Carlsen Center for Children Endowment Fund		50,000	50,000
Art & Esther Emerson Endowment Fund			
Chaseley United Methodist Church		6,867	6,867
Arthur Moore Fund			
Back to the Bible		3,300	
Dallas Theological Seminary		3,300	
Fuller Theological Seminary		3,300	
Liberty University		3,300	13,199
Bellevue Cemetery Association Endowment Fund		2,764	2,764
Brinsmade Lutheran Church Cemetery Fund		614	614

Clarence & Ardeen Sveum Exhibit Fund			
Bonanzaville, USA	\$	35,865	\$ 35,865
Connie Wold Wellness Foundation			
Scholarship: Rhyleigh Alene Carns		500	
Scholarship: Tianna Ruth Dwyer		500	
Scholarship: Riley Mae Faller		500	
Scholarship: Ashley Elizabeth Holen		500	
Scholarship: Zanna Rae Lyon		500	
Scholarship: Emma Christine Mogen		500	
Scholarship: Lindsay Sue Peterson		500	
Scholarship: Sydney Ryan Sanford		500	4,000
Deering Lutheran Church Cemetery Fund		504	504
Devils Lake Curling Club			
City of Devils Lake		4,750	4,750
Donald J. Rupp Endowment Fund			
Geographical Center Historical Society		565	
Munich High School		452	
Rugby High School		452	
Salem Mennonite Cemetery		113	
St. Paul Lutheran Church		565	
Zion Lutheran Church Cemetery		113	2,259
Donor Advised Funds & Operating Endowments			
Various Recipients		1,180,118	1,180,118
Dorothy D. James - Camp Grassick Fund		227	227
Elmer & Lucille Hoffert Medical Research Fund			
UND Foundation		1,528	1,528
First Lutheran Church Endowment Fund		1,426	1,426
Fort Stevenson Foundation Endowment Fund			
SkyFest Over Fort Stevenson		7,305	7,305
Francis Fitzsimonds Endowment Fund			
Park Center Cemetery Association		243	
St. Joseph Catholic Cemetery Association		485	
Walhalla Catholic Cemetery Association		739	
Walhalla Hillside Cemetery Association		739	2,206
Fred & Ida Osmon Endowment Fund - Ryder/Garrison			
Garrison Lamplighter Senior Club		356	
Ryder Happy Hour Senior Citizens		356	713
Gardar Cemetery Endowment Fund		3,114	3,114
Garnett House Fund			
City of St. Thomas		451	451
Genevieve Tamerius Fund			
St. Leo's Catholic Church		187	187
Glasston Cemetery Association Endowment Fund		723	723
Goshen - Moravian Cemetery Fund		449	449
Harold & Eva Williams Memorial Fund			
Wing Rural Ambulance		495	495
Harold & Susan Bergquist Endowment Fund			
Lakota School District		338	338
Harris P. Kenner Memorial Fund			
Leeds Ambulance Service		591	
Leeds Rural Fire Protection District		591	
Maddock Ambulance Service, Inc		591	
Maddock Rural Fire Protection District		591	2,365
Historic Aadalen Church & Cemetery Fund		353	353
Historic Jewish Cemetery - Regan, ND Endowment Fund		1,695	1,695
I.O.O.F. Cemetery of Cando Fund		1,883	1,883
James & Anne Ryan Memorial Fund			
Catholic Charities North Dakota		13,176	
Minot Catholic Schools		1,647	
University of Mary		1,647	16,470
Jay Fagerholt Endowment Fund			
Scholarship: Zoe Adria Muccatira		725	725
Jim Hurkes Scholarship Fund			



The Romanus F. Wagner Post No 6264 VFW used their 2021 grant from the Strasburg Area Community Foundation to install accent lighting on the gazebo and tank on display in their park on main street. Beautiful! Donate to YOUR local community foundation and support projects like this in your community!

Central Dakota Children's Choir	\$ 600	\$ 600
John & Jean Rouzie Endowment Fund		
Anne Carlsen Center	1,656	1,656
John D. Kelly Endowment Fund		
Legal Services of ND	1,920	1,920
John H. & Helene MacDonald Endowment Fund		
Dakota Boys And Girls Ranch Foundation	208	
Domestic Violence & Rape Crisis Center - Dickinson	208	
Evangelical Lutheran Church in America	208	
ND Chapter-Nature Conservancy	139	
Salvation Army (Bismarck)	208	
St. John Lutheran Church ELCA	695	
St. Joseph's Hospital Foundation	<u>139</u>	1,806
Julius & Alta Burzloff Endowment Fund		
Burleigh County Senior Adults Program	2,561	
Trinity Lutheran Church	<u>2,561</u>	5,122
Laurel & Betty Koehn Family Charitable Endowment Fund		
Cavalier County	1,760	
Cavalier County Emergency Food Pantry Inc.	2,834	
Missouri Synod Lutheran	<u>2,834</u>	7,428
Lebanon Church Cemetery Fund	540	540
Leon Dubourt Gorge Arts Council Endowment Fund	2,362	2,362
Lynn D Ebert Memorial Fund for Grafton High School	27,655	27,655
Lynn D Ebert Memorial Fund for Lutheran Sunset Home Grafton	27,655	27,655
Lynn D Ebert Memorial Fund for St Johns Catholic Church Grafton	27,655	27,655
Lynn D Ebert Memorial Fund for Unity Medical Center Grafton	27,655	27,655
Mandan Historical Society Endowment Fund	350	350
Mary Ann Pecka Memorial Fund		
St. Mark's Catholic Cemetery Association	446	446
Mary E. Finley Endowment for Seniors of Walsh Cty. Fund		
City of Grafton - replace lounge chairs	1,440	1,440
Mary G. Wiltse Memorial Endowment Fund		
Scholarship: Olivia Tuhy, Concordia	1,450	1,450
Maurice & Sharon Lardy Family Fund		
Home On The Range	460	460
Meadows Memorial Fund		
Carrington Medical Center DBA CHI St. Alexius Health Carrington	18,037	18,037
Special Purpose Mike & Dorothy Dolan Minot Commission on Aging Endowment Fund	1,665	1,665
Mike F. Dolan Minot Rotary Club Fund		
Minot Area Community Foundation for scholarships	7,830	7,830
Minnewaukan Cemetery Fund	164	164
Minnewaukan Evangelical Lutheran Cemetery Fund / St. Peter Cemetery Fund	202	202
ND Department of Ag - Mobile Food Processing Unit Fund		
Summit Fire Protection	9	9
North Dakota COVID-19 Community & Nonprofit Response Fund		
BDECAN Food Pantry	4,812	
Community Nourishment	4,812	
Dakota Prairie Community Action	4,812	
Dunseith Food Pantry	4,812	
Maddock Community Food Pantry	4,812	
Selfridge Assembly Of God Food Pantry	4,812	
Sheridan County Food Pantry	4,812	
Tipi Wakan Baptist Church Food Pantry	4,812	
Turtle Mountain Chippewa Food Pantry	4,812	
Turtle Mountain Worship Center Food Pantry	4,812	
Wana Wota	<u>4,812</u>	52,932
NDCF Non-Endowment Fund		
Casselton Park District for the Golf Course	19	
From ConocoPhillips for the Dunn County Food Pantry	2,425	
From ConocoPhillips for the McKenzie County Food Pantry	<u>4,850</u>	7,294
Nick & Anna Logosz Memorial Fund		
St. John the Baptist Ukrainian Catholic Church	894	894
Nordmanna Cemetery Endowment Fund	531	531

North Dakota Conservation Foundation		
North Dakota Grazing Lands Coalition	\$ 9,000	\$ 9,000
North Dakota Golf Foundation		
North Dakota Golf Association	1,000	
North Dakota Golf Association	<u>2,865</u>	3,865
Northeast Regional Education Fund		
Grafton Public School District #18	750	750
OneOK Hospitality Employee COVID-19 Assistance Fund		
McKenzie County Food Pantry	2,880	2,880
Pioneer Square Emergency Fund		
Pioneer Square Community Center	10,000	10,000
Sacred Heart of Jesus Shrine on the Prairie Endowment Fund	418	418
Sam Tolchinsky Endowment Fund		
The American Legion	300	300
Sheyenne River Speedway Matching Fund		
Sheyenne River Speedway	30,000	
Sheyenne River Speedway	<u>10,000</u>	40,000
Singh Family Endowment Fund		
Hazen Area Dollars for Scholars	1,363	
Mercer McLean Counties Commission on Aging	1,363	
Salvation Army (Bismarck)	<u>1,818</u>	4,544
Sons of Norway, Sverdrup Lodge #107 Endowment Fund	938	938
St. Patrick's Catholic Cemetery Endowment Fund	537	537
St. Peter's Centennial Fund	475	475
St. Thomas City Cemetery Endowment Fund	843	843
Stark County Sheriff's Association of Deputies Special Project Fund		
Domestic Violence & Rape Crisis Center - Dickinson	2,000	
Stark County Association of Deputies	5,000	
Stark County Association of Deputies	<u>5,000</u>	12,000
Stony Lake Cemetery Fund	684	684
Susanne Delaney Mattheis Charitable Fund		
Bismarck Art & Galleries Association	6,620	
Bismarck State College Foundation	6,620	
Bismarck/Mandan Symphony Orchestra	6,620	
Cathedral of the Holy Spirit	6,625	
Sanford Health Foundation	6,625	
The Bismarck Public Library Foundation, Inc.	6,625	
University of Mary	<u>6,625</u>	46,360
Valentine F. Brossart Memorial Fund		
Little Flower Church	550	550
Valley Grove Cemetery Endowment Fund		
Valley Grove Cemetery Association	154	<u>154</u>

Total Other Funds with Donor Restrictions 1,747,293

Total Grants Paid in 2021 \$ 4,373,273

Charitable Project and Program Expenses Paid in 2021 2,645,374

Total Charitable Grants and Expenditures in 2021 7,018,647

The North Dakota Community Foundation

Schedule of Endowment Net Assets by the Type of Fund

Year Ended December 31, 2021

(*** Denotes New Fund)

NDCF Statewide Greatest Needs & Field of Interest Fund

Alphonse & Loretta Hiltner Fund	\$ 18,100
AMKO Charitable Endowment Fund	22,044
Arthur Moore Unrestricted Fund	688,489
Atwood-Larson Company Fund	8,643
B.C. Gamble Foundation Fund	33,403
Basin Electric Fund	3,151
Bush Foundation Fund	494,862
Carl & Dorothy Fischer Endowment Fund	2,026
CBP Fund	20,658
Charles Stewart Mott Foundation Fund	215,725
Child & Family Services Fund - William O. Haugen Estate	237,427
Clinton R. Ottmar Memorial Fund	14,825
Coalition for Impaired Health Professionals Fund	9,803
Dain Kalman Quail Fund	210
Dan & Mary Liberda Endowment Fund	1,989
Deluxe Check Printers Fund	24,875
Directors Fund	142,921
Don & Sylvia Schmid Fund	9,596
E. J. Lander Fund	210
Eagles #2614 - Devils Lake Fund	210
Eight Mile School District #6 Foundation Fund	137
Farmers St. Bank - Maddock Fund	525
Fern Christenson Unrestricted Endowment Fund	324,387
First National Bank - Grand Forks Fund	2,101
Frank O. Becker Endowment Fund	270,955
George & Diane Cox Unrestricted Fund	4,191
Gilbert Schmidt Unrestricted Fund	374
Grain Terminal Foundation Fund	11,999
Gulf Oil Corporation Fund	8,639
Harry & Merle Stephenson Fund	686,313
Henry & Selma Lundene Endowment Fund	159,955
Interstate Seed & Grain Fund	7,468
James C. Jensen Fund - Anonymous Fund #1	10,009
Joseph A. Anderson Unrestricted Fund	9,983
Joseph Imberman Fund	210
Joseph M. Powers Fund	840
Judge Harold M. & Harriet T. Hager Memorial Fund	24,449
Linda Steve Charitable Fund	2,151
Marie Almlie Music Unrestricted Fund	1,580
Mary J. Lamb Trust Fund	27,454
Montana Dakota Utilities Fund	56,072
Nash Foundation Fund	1,879
ND Bremer Banks Fund	215,725
ND Womens Foundation	124,390
Norman & Mattie Lou Weckerly Charitable Fund	1,393,784
Otto Bremer Foundation Children & Family Services Fund	131,655
Otto Bremer Foundation Fund	217,643
Piper Jaffray Hopwood Fund	2,101
Porter Brothers Fund	4,202
Provident Life Insurance Company Fund	2,101
Ruth Meiers Hospitality House Endowment Fund	141,276
Singh Family Unrestricted Endowment Fund	128,434
Smith Investment Company Fund	10,739

Soo Line Railroad Fund	\$ 110,893
St. Paul Companies Fund	97,040
Stump Lake Park Endowment Fund	3,246
T.A. Solheim Fund	5,814
Technical Assistance Endowment Fund	1,589
The Constance A. Boler Memorial Fund	118,115
Torrey & Lillian Peterson Endowment Fund	2,026
Unrestricted Fund	123,315
Valerie Bren Memorial Fund	17,116
Valley Bank - Grand Forks Fund	3,151
Wayne J. & Magdalen R. Roberts Unrestricted Fund	588,549
Total NDCF Statewide Greatest Needs & Field of Interest Endowment Funds	7,003,741

Local Community Foundation Funds

Adams County Community Foundation	98,638
Anamoose Area Community Foundation	313,670
Arthur - Clarence Johnson & Eunice Iwen Community Foundation for Arthur, ND	7,650,746
Ashley Community Endowment Fund	\$ 639,562
William E. Kretschmar Charitable Fund for Ashley	<u>1,069,538</u>
Bismarck/Mandan Community Foundation	2,177,958
Glenn & Helen Sorlie Memorial Fund	<u>76,743</u>
Bottineau Community Endowment Fund	82,357
Bowman/Slope Community Foundation	306,618
Carrington Community Endowment Fund	642,289
McGinn-Kunkel Estate Fund	<u>81,403</u>
Casselton Area Community Foundation	691,578
Cavalier Community Foundation	249,162
Cooperstown Community Foundation	397,074
Dickinson Area Community Foundation	136,954
Drayton Area Community Foundation	149,861
Ellendale Area Community Foundation	962,734
Bill & Leona Meyer Fund	<u>34,580</u>
Emerado Community Endowment Fund	57,435
Enderlin Area Community Endowment Fund	272,907
Fairmount Community Endowment Fund	114,079
Finley Community Endowment Fund	326,409
Galesburg Area Foundation	135,220
Garrison Area Community Foundation	179,907
Glen Ullin Area Community Foundation	32,015
Ishmael & Rose Diede Charitable Fund for Glen Ullin	<u>174,935</u>
Golden Valley County Community Foundation	123,061
Grafton Community Foundation	193,013
Harry & Merle Stephenson Memorial Fund	275,272
Sig Jagielski Memorial Fund	1,019,510
Lynn D Ebert Memorial Fund for the Grafton Community Foundation	<u>1,898,757</u>
Hankinson Community Endowment Fund	63,151
Hannaford Area Community Foundation	100,650
Harvey Area Community Foundation	251,859
Hatton Area Community Foundation	112,411
Hazelton-Moffit-Braddock Uncle T's Community Foundation	81,048
Hebron Community Foundation	426
Ishmael & Rose Diede Charitable Fund for Hebron	<u>175,023</u>
Hillsboro Community Foundation	262,409
Hope Area Community Foundation	550,134
Hunter - Judy Mae Hauff Memorial Fund	34,602
Hurdsfield Community Endowment Fund	228,995
Jamestown Community Foundation	363,246
Kenmare Area Community Foundation	256,239
Killdeer Area Community Foundation	129,784
Kindred Area Community Foundation	187,738
Larimore Community Endowment Fund	516,193
Charles D. McCanna Fund	212,591
Vernon & Lila Halvorson Endowment Fund	<u>9,025</u>
	737,808

Lisbon Area Community Foundation	\$ 1,044,231	
Dale L. Brown Memorial Fund for Lisbon	2,799,199	
Russell F. Brown Memorial Fund for Lisbon	<u>2,902,701</u>	\$ 6,746,131
Maddock Community Foundation		283,487
McKenzie County Community Foundation		402,066
Mercer County Community Endowment Fund		29,305
Milnor Community Foundation	25,678	
Dale L. Brown Memorial Fund for Milnor	2,797,927	
Russell F. Brown Memorial Fund for Milnor	<u>2,894,260</u>	5,717,865
Minnewaukan Community Endowment Fund		168,588
Minot Community Endowment Fund	946,168	
Charles & Madge Westlie Endowment Fund	503,447	
T.A. & Anna Solheim Endowment Fund	<u>559,156</u>	2,008,771
Mohall Area Community Foundation		89,555
Mott-Regent Community Foundation	6,542	
Ishmael & Rose Diede Charitable Fund for Mott/Regent	<u>175,592</u>	182,134
New England Community Foundation	5,799	
Ishmael & Rose Diede Charitable Fund for New England	<u>178,865</u>	184,664
New Rockford Community Foundation		166,515
New Salem Area Community Foundation		1,688,975
Oakes Area Community Foundation		745,315
Park River Community Endowment Fund	722,467	
Chris Rostvet Memorial Fund	<u>9,300</u>	731,768
Parshall Area Community Foundation		354,917
Pembina - Larry J. Wilwant Fund for Pembina, ND		1,236,969
Pierce County Endowment Fund		131,546
Powers Lake Community Foundation Endowment		71,857
Richardton Area Community Foundation		555,159
Richland Wilkin Community Foundation	616,209	
Elmer & Lucille Hoffert Fund	<u>57,312</u>	673,521
Rolla Community Endowment Fund		574,628
Rugby Community Endowment Fund		651,316
Sherwood/Antler Community Foundation		40,155
Stanley Area Community Foundation		2,514,301
Strasburg Area Community Foundation		79,723
Tioga Community Foundation		154,068
Towner County Community Foundation		22,914
Walhalla Area Community Foundation		225,801
Westhope Area Community Foundation		85,628
Williston Area Community Foundation	46,705	
George & Helen Christensen Family Charitable Fund	<u>92,579</u>	139,284
Wishek Area Community Foundation		47,625
Total Local Community Foundation Endowment Funds		50,804,060

Scholarship Funds

Alfred Klewin Scholarship Fund		8,249
Alice Olson Byron Memorial Music Scholarship Fund		25,699
Allen Giese Scholarship Fund		93,674
Arnold & Dorothy Holm Scholarship Fund		25,693
Audrey Doyle Scholarship Fund		32,210
Barbara Beach Study Abroad Scholarship Fund		95,801
Benjamin Berg Memorial Scholarship Fund		86,002
Billings County Scholarship Fund		25,099
Bismarck Rotary Club Scholarship Fund	238,419	
Carole Bordenkircher Kralicek Scholarship Fund	<u>17,353</u>	255,772
Bismarck Schools Scholarship Fund	63,504	
Alton Carl Wolfer Memorial Scholarship Fund	6,479	
Chris Traeholt Scholarship Fund	6,058	
Edgar Bollinger Scholarship Fund	5,461	
Guy Larson Scholarship Fund	6,168	
Harold Kepler Music Scholarship Fund	12,342	
Jim & Barbara Blaine Scholarship Fund	32,002	
Kathy Eggmann Memorial Scholarship Fund	2,798	



A donor-advised fund at NDCF allows you to donate money when it's advantageous to you (for tax purposes) and recommend grant awards to your favorite charities later when you want to support a cause that touches your heart. Contact us at 701-222-8349 if you want to learn more about this personalized charitable-giving vehicle

Lisa Kraft Memorial Scholarship Fund	\$ 23,753	
Paulie (Paula) Paul Memorial Scholarship Fund	11,576	
Robert C. Peske Memorial Scholarship Fund	2,382	
Tom Sturdevant Scholarship Fund	<u>8,731</u>	\$ 181,255
Bismarck Tribune Scholarship Fund***		25,815
Bob Campbell Scholarship Fund		15,178
Bowman County Scholarship Funds		
Bowman County School Foundation Endowment Scholarship Fund***	4,462	
Buchholz Endowment Scholarship Fund***	203,211	
Leo D. & Mary C. Kalisiak Endowment Scholarship Fund***	27,464	
Pat Dyk Endowment Scholarship Fund	<u>13,518</u>	248,656
Burton Louis Gewalt Meritorious Fund		326,948
Calvin Andrist Scholarship Fund		22,061
Carlyle R. & Eva M. Albrecht Scholarship Fund		13,140
Carrington Health Scholarship Fund		41,548
Clarence Johnson/Eunice Iwen Scholarship Fund		84,110
Cody Feist Memorial Scholarship Fund		13,426
Conrad & Arthur Nisstad Memorial Scholarship Fund		363,029
Curtis Schweitzer Scholarship Fund***		10,706
Curtis Stern Memorial Scholarship Fund		188,297
David Gipp Memorial Scholarship Fund***		25,815
Dean & Eleanor Miller Memorial Scholarship Fund		22,260
Dick & Dean Bultema Scholarship Fund		17,606
Donald B. Sass Scholarship Fund		39,687
Donald & Irene Metzen Scholarship Fund		90,014
Dr. Donald P. Miller Memorial Scholarship Fund		35,165
Dr. Henry Springer Scholarship Fund		1,653,812
Dr. Roger E. Meisner Veterinary Medicine Educational Fund		2,571,032
Dushinske & Jamison Water Resources Scholarship Fund		161,609
Einar & Helma Septon Scholarship Fund		22,664
Eleanor Wiebe Scholarship Fund***		665,615
Ellendale Area Scholarship Fund	99,126	
Helen & Ed Leiby Scholarship Fund in Science & Mathematics	97,059	
Kyla Morehead Memorial Scholarship Fund	5,878	
Tiny & Joyce Gebhardt Scholarship Fund	<u>27,547</u>	229,609

Elvine Sondreal Septon Fund		\$	16,675
Emil Nickl Scholarship Fund			15,834
Esther Hample Scholarship Fund			46,576
Fay & Irene Sanders Memorial Scholarship Fund			18,815
Frank & Catharine Hornstein Memorial Music Scholarship Fund			7,497
Frank & Emilie Blasl Memorial Scholarship Fund			8,345
Fred & Henrietta Kerian Memorial Scholarship Fund			11,464
Fred & Ida Osmon Scholarship Fund			12,993
Gerald Ringdahl Memorial Scholarship			29,166
Gerald W. & Edith F. Wallace Scholarship Fund			544,167
Grafton Scholarship Funds			
Bert Rotnem Scholarship Fund	\$	241,733	
George H. Bliven Scholarship Fund		4,333	
Kiwanis - Meier Scholarship Fund		5,231	
LaPlante Family Scholarship Fund		12,332	
Noela Kingsbury Memorial Scholarship Fund		6,218	269,847
Helen & Everett Barta Scholarship Fund			56,871
Holli Kautzman Memorial Scholarship Fund			122,273
Ishmael & Rose Diede Charitable Fund for Scholarships			723,976
James & Winifred Marvin Scholarship Fund			132,924
Jean E. Crabtree Memorial Scholarship Fund			6,824
Jeff Burgess Memorial Scholarship Fund			38,797
J. Garvin Jacobson Scholarship Fund			20,974
Jim Lawler Memorial Scholarship Fund			2,503
Joan Multhaup Scholarship Fund			13,791
John E. Conneran Memorial Scholarship			44,216
John J. Ayash Scholarship Fund			12,280
John & Yvonne Cronquist Midway Scholarship Fund			128,606
Kenneth & Arline Lueck Scholarship Fund			112,305
Kenneth & Leila Morris Dental Scholarship Fund			125,836
Kirstin Skari Memorial Scholarship Fund			27,262
Kyle Binstock Memorial Scholarship Fund			15,377
Larimore Public Schools Scholarship Fund		72,822	
Dawn Marie Stoik Memorial Athletic Scholarship Fund		7,309	
EllaRae Kelly Memorial Scholarship Fund		19,926	
Grace Taylor Stone Scholarship Fund		362,542	
Lloyd A. Engh North Star Masonic Lodge Fund		25,483	
Paul Daniel Hougen Memorial Athletic Scholarship Endowment***		26,256	514,339
Lars & Hilda Svendsgaard Scholarship Fund			280,102
Leo Billey Memorial Scholarship Fund			762,251
Les Melroe Gwinner Scholarship Fund			33,904
Lisbon Scholarship Funds			
Harold & Eldeane Johnson Scholarship Fund		74,374	
Lewis Lilyquist Scholarship Fund		12,979	
Lisbon Dollars For Scholars Fund		39,290	126,642
Lynn Berg Memorial Scholarship Fund			61,798
Margaret Geiger Green Scholarship Fund			11,061
Marv Rockstad Memorial Scholarship Fund			26,668
Mary Goldader (Johnson) Memorial Scholarship Fund			14,270
Michigan Scholarship Fund			95,500
Minot Kiwanis Scholarship Fund			24,935
Monroe Scheflo Scholarship Fund			33,891
Muriel Crabtree Music Scholarship Fund			25,694
Muriel R. Hyden Memorial Scholarship Fund			23,803
ND Aviation Association Scholarship Fund		121	
Pilot Legacy Scholarship Fund***		22,898	23,018
ND Career & Technical Education Endowment Fund			28,809
NDCF/ND Nurses Association Scholarship Fund			126,046
ND Farmers Union-Alan Bergman Scholarship Fund			195,690
ND Farmers Union Co-op House Scholarship Fund			188,002
ND Farmers Union Scholarship Fund			156,605
ND Military Scholarship Fund			13,674
ND Veterinary Medical Association Scholarship Fund			63,770

North Dakota Nurse Practitioner Association Scholarship Fund		\$	75,555
North Sargent Class of '63 Scholarship Fund			14,921
Oakes Scholarship Funds			
BankNorth Scholarship Fund	\$	67,700	
Max Zelenak Scholarship Fund		84,529	
Oakes VFW Scholarship Fund		26,219	
Rick & Nancy Warner Bigler Scholarship Fund		15,855	194,303
Park River Scholarship Fund			19,739
Lloyd & Martha Haas Scholarship Fund		81,532	
Victor & Verna Johnson Scholarship Fund		160,288	261,559
Ray & Lillian Gulbranson Scholarship Fund			35,679
Ray Scholarship Fund			47,855
Richard & Christina Fiedler Scholarship Fund			15,462
Richard & Diane Odegard Veterinary Scholarship Fund***			49,990
Robert E. Chase Scholarship Fund			201,949
Rolfness Endowment Scholarship Fund***			35,359
Ronald D. Liudahl Scholarship Fund			42,170
Rugby High School Alumni Scholarship Fund			63,122
Rupert J. Rehberg Scholarship Fund			7,487,278
Sally Brash Memorial Scholarship Fund			345,056
Sheldon Mizpah Scholarship Fund			14,950
Stanley & Julie Buxa Nursing Scholarship Fund			12,126
St. Thomas, ND Scholarship Fund***		58,656	
St. Thomas Masonic Lodge #30 Scholarship Fund		17,499	
Jean A. Argue Scholarship Fund		33,933	
John Lunde Scholarship Fund		3,403	
Josephine Garnett Miller Scholarship Fund		23,807	
Thomas Whelan Scholarship Fund		4,485	
Victor & Louise Dusterhoft Scholarship Fund		2,404	
William Born Scholarship Fund		19,114	163,299
Sue Podenski Scholarship Fund			8,726
The Theo Torgerson Scholarship Fund			27,763
Timothy T. & Frances White Scholarship Fund			127,261
Tom & Ruth Bettenhausen Scholarship Fund			114,760
Travis Allen Hohbein Memorial Scholarship Fund			15,970
Tyler Herman Memorial Scholarship Fund			6,782
UTTC Johnson Scholarship Foundation Fund			390,996
Total Scholarship Endowment Funds			22,866,806

School Funds

Carrington Public School Fund			19,010
Ellendale Public Schools Foundation Fund			180,720
Fessenden-Bowdon Public School Foundation			1,736
Kulm Public School Foundation Fund			55,797
Lidgerwood Public School Foundation			250,194
Lisbon Public Schools Endowment Fund			113,615
Northern Cass Education Foundation			99,374
Nueta, Hidatsa, Sahnish College Food Sovereignty Endowment***			13,425
Oakes Public School Endowment Fund			28,607
Oakes Public Schools Music Booster Fund			33,528
Our Redeemer School Endowment Fund			16,535
Park River Area Education Foundation - Endowment			59,039
Ray-Nesson Public School Endowment			189,271
Richardton-Taylor Public School Endowment			7,269
Stanley Community Schools Foundation			114,261
Underwood, ND School Foundation Endowment Fund			28,988
Wahpeton Alumni Foundation			19,638
Wyndmere School Foundation			18,655
Total School Endowment Funds			1,249,660

Organization Funds

ABLE, Inc. Endowment Fund			70,500
Abused Adult Resource Center Endowment Fund			47,497

“We are so grateful to partner with the ND Community Foundation and we are thankful for your presence in North Dakota! Through the years, NDCF has been a wonderful resource for the Ranch as well as those who planned ahead, for others that would follow, and now we are receiving benefits from their foresight. God bless you in your endeavors and for meeting each organization at their level, in time of need.”



Alpha Opportunities Endowment Fund	\$	28,057
Ashley Public Library Endowment Fund		5,850
Badlands Ministries Endowment Fund		236,444
Bethel Church Endowment Fund		71,368
Bethel Lutheran Church Endowment Fund		51,794
Bismarck Art & Galleries Association Endowment Fund		14,467
Casselton Parks & Recreation Endowment Fund		164,651
Catholic Charities North Dakota Endowment Fund		173,922
Cooperstown Bible Camp Endowment Fund		434,812
Dickinson Public Library Foundation Endowment		391,877
Dickinson Rotary Charitable Endowment Fund		50,301
Enderlin Museum Endowment Fund		75,475
Entertainment, Inc. Fund		4,495
Esmond Jubilee Endowment Fund		12,428
Farm Rescue Foundation		106,326
Fellowship of Christian Athletes North Dakota Endowment Fund		23,185
First Care Health Center Endowment Fund		341,830
Furry Friends Rockin' Rescue Endowment Fund***		6,103
Gateway to Science Endowment Fund		225,613
Good Samaritan Health Service Fund		53,555
Harvey Public Library Endowment Fund		157,583
Heart of America Germans from Russia Endowment Fund		33,809
Herb Boswau Memorial Professional Development Grant Fund		14,891
Historic Elmwood Endowment Fund		18,429
HIT, Inc. Endowment Fund		27,753
Humanities North Dakota Endowment Fund		35,703
Icelandic State Park Funds		
Icelandic Park Fund	\$	13,872
Icelandic State Park Centennial Project Endowment Fund		396,321
Icelandic State Park Heritage Building Endowment Fund		114,708
Skuli Pall Benedictson Endowment Fund		114,222
Jeremiah Program Fargo Moorhead Scheel Barry Endowment		663,729
Kalloch Eunice Gronvold House Endowment Fund		36,433
Leach Library Fund		15,394
Linton Hospital Endowment Fund		76,770
Lisbon Public Library Fund		17,964
Little Flower Fund		31,802
Little Flower Fund II Fund		35,673
Lord of Life Lutheran Church Endowment Fund		257,912
Mandan Presbyterian Church Endowment Fund		36,014
Martin's Lutheran Church Endowment Fund		296,464
McKenzie County Health System Endowment Fund		27,960
McKenzie County Right To Life Endowment		61,598
Missouri Slope Areawide United Way Endowment Fund	1,861,696	
Marlowe Ann Regan Endowment Fund	9,847	
Thomas B. & Anna Jane Regan Fund	1,642	1,873,185
Morton Mandan Public Library Endowment Fund		43,875
ND Center for the Book Fund		4,268
ND Real Estate Educational Fund		200,127
New Town Health Support Corporation Endowment Fund		5
North Dakota Adult & Teen Challenge Endowment Fund		140,302

North Dakota FFA Foundation Endowment Fund	\$	40,959
Northwood Deaconess Health Center Endowment		14,529
Oberon 55 Club Endowment Fund		18,622
Pembina County Historical Society Fund	\$	114,258
Cavalier Jail / Library Building Endowment Fund		2,753
St. Anthony's Church Endowment Fund		44,622
Pioneer School Endowment Fund		24,813
Pioneer Square Endowment Fund		36,552
Prairie Learning Center Endowment Fund		30,898
Prairie Public TV Endowment Fund		182,716
Bismarck Prairie Public Television Fund		49,067
Bremer Banks Prairie Public Television Fund		76,896
Preservation North Dakota Endowment Fund		6,873
Pride, Inc. Endowment Fund		200,379
Red Willow Ministries Endowment Fund		146,537
Richardton Health Center Foundation Endowment Fund		47,080
Rural Leadership ND Alumni Foundation		31,448
Sacred Heart Benedictine Foundation Endowment Fund		72,044
Sitting Bull College Endowment Fund		120,483
Sitting Bull College Scholarship Fund		3,541
Souris Valley United Way-Molly Wallin Endowment Fund		504,233
The Bismarck Library Foundation, Inc. Endowment Fund		104,192
Town Square Dickinson Endowment Fund***		5,575
Turtle Mountain Environmental Learning Center Fund		6,793
United Tribes Technical College Endowment Fund		307,386
United Way Dickinson Endowment		41,533
Vision West ND Endowment Fund		265,814
Volunteer Caregivers for the Elderly Endowment Fund		7,670
Washburn Volunteer Ambulance Service Endowment Fund		82,387
Women's Care Clinic Endowment Fund		116,435
Women's Care Clinic Endowment Fund (Bismarck)		76,540
Young Life North Dakota (Bismarck) Fund		131,493
Young Life North Dakota (Native) Fund		73,926
Total Organization Endowment Funds		10,326,358

Special Purpose Restricted Funds

Adolph E. Shirley Memorial Endowment Fund	180,799
Alphonse & Loretta Hiltner Endowment Fund	87,565
Andvari Hallson Cemetery Association Endowment Fund	24,463
Antiochia Lutheran Cemetery Fund	24,165
Argue Family Fund for the Hamilton Cemetery Assoc.	84,891
Art & Esther Emerson Endowment Fund	204,761
Arthur Moore Fund	399,480
Beaulieu Township Norwegian Lutheran Cemetery Endowment Fund	19,195
Bellevue Cemetery Association Endowment Fund	126,877
Bismarck/Mandan Branch of AAUW Leadership Fund	14,256
Bismarck Schools BECEP Fund	13,929
Bismarck Schools Chemistry Fund	3,576
Brinsmade Lutheran Church Cemetery Fund	18,561
CCC Statue Endowment Fund	7,751
Center for Peace Studies Fund	201,901
Clarence & Ardeen Sveum Exhibit Fund	1,090,066
Dakota Children's Advocacy Center Endowment Fund	33,895
Dakota Social Justice Fund	69,001
Deering Lutheran Church Cemetery Fund	16,045
Denis & Pat Montplaisir Memorial Fund***	24,894
Donald J. Rupp Endowment Fund	68,677
Dorothy D. James - Camp Grassick Fund	6,828
Ellendale Healthcare Fund	114,648
Elmer & Lucille Hoffert Medical Research Fund	45,419
First Lutheran Church Endowment Fund	86,996
Fort Stevenson Foundation Endowment Fund	223,600
Francis Fitzsimonds Endowment Fund	66,620

Fred & Ida Osmon Endowment Fund - Ryder/Garrison	\$ 21,681
Friendship Park: Dickinson Endowment Fund	29,456
Gardar Cemetery Endowment Fund	94,088
Garnett House Fund	13,712
Genevieve Tamerius Fund	5,656
Glasston Cemetery Association Endowment Fund	22,981
Goshen - Moravian Cemetery Fund	13,465
Greenwood Cemetery Association Endowment Fund	22,855
Gustavus Adolphus Cemetery Fund	54,305
Halling Cemetery Association Endowment Fund	27,759
Hamilton Cemetery Fund	92,713
Hankinson Veterans Memorial Park Fund***	25,262
Harold & Eva Williams Memorial Fund	14,767
Harold & Susan Bergquist Endowment Fund	10,732
Harris P. Kenner Memorial Fund	70,451
Historic Aadalen Church & Cemetery Fund	10,641
Historic Aadalen Church Endowment Fund	9,052
Historic Jewish Cemetery - Regan, ND Endowment Fund	53,829
Inspiring Minds Endowment Fund	33,504
I.O.O.F. Cemetery of Cando Fund	103,738
James & Anne Ryan Memorial Fund	494,793
Jay Fagerholt Endowment Fund	25,684
JB Martin Fund for Hamilton Township Cemetery Assoc.	11,672
Jim Hurkes Scholarship Fund	18,209
John B. Williams Fund	226,519
John D. Kelly Endowment Fund	61,342
John H. & Helene MacDonald Endowment Fund	62,720
John & Jean Rouzie Endowment Fund	50,024
Julius & Alta Burzloff Endowment Fund	155,053
Laurel & Betty Koehn Family Charitable Endowment Fund	221,418
Lebanon Church Cemetery Fund	16,445
Leeds Lutheran Church Cemetery Fund	19,347
Leon Dubourt Gorge Arts Council Endowment Fund	71,912
Lisbon Jaycees Scholarship Fund	12,334
Lisbon Kiwanis Leadership Fund	23,855
Lynn D Ebert Memorial Fund for Grafton High School	1,899,412
Lynn D Ebert Memorial Fund for Lutheran Sunset Home Grafton	1,899,324
Lynn D Ebert Memorial Fund for St Johns Catholic Church Grafton	1,899,003
Lynn D Ebert Memorial Fund for Unity Medical Center Grafton	1,897,888
Mandan Historical Society Endowment Fund	19,649
Mary Ann Pecka Memorial Fund	13,455
Mary G. Wiltse Memorial Endowment Fund	52,902
Mary Louise Blizzard Memorial Fund	3,012
Maurice & Sharon Lardy Family Fund	13,716
McElroy Endowment Fund	48,122
McKenzie County Library Fund	18,862
Meadows Memorial Fund	568,720
Mike & Dorothy Dolan Minot Commission on Aging Endowment Fund	50,292
Mike F. Dolan Minot Rotary Club Fund	246,991
Minnewaukan Cemetery Fund	4,949
Minnewaukan Evangelical Lutheran Cemetery Fund / St. Peter Cemetery Fund	6,086
Mischelle C. Timmins Fund	26,821
Nelson County Health Services Foundation Endowment Fund	15,213
Nick & Anna Logosz Memorial Fund	27,025
Njos Family Endowment Fund***	25,262
Nordmanna Cemetery Endowment Fund	16,947
North Dakota Conservation Foundation	283,765
North Dakota Nurse Practitioner Association Educational Endowment Fund***	134,766
Northeast Regional Education Fund	22,851
Pleasant Hill Cemetery Endowment Fund	75,646
Sacred Heart of Jesus Shrine on the Prairie Endowment Fund	29,997
Sam Tolchinsky Endowment Fund	14,034
Shawn Flaherty Memorial Fund	30,390

Short Creek Church & Cemetery Fund	\$ 23,058
Singh Family Endowment Fund	136,391
Sons of Norway, Sverdrup Lodge #107 Endowment Fund	28,894
South Pembina Cemetery Fund	3,572
Stony Lake Cemetery Fund	20,385
St. Patrick's Catholic Cemetery Endowment Fund	16,389
St. Patrick's Legacy Endowment Fund	11,104
St. Peter's Centennial Fund	14,354
St. Thomas City Cemetery Endowment Fund	53,138
Susanne Delaney Mattheis Charitable Fund	1,380,625
United Methodist Church of Milnor Endowment Fund	35,071
Valentine F. Brossart Memorial Fund	16,403
Valley Grove Cemetery Endowment Fund	4,574
Vang Cemetery Fund	3,678
West River Veterinary Clinic Legacy Foundation	59,007
Total Special Purpose Restricted Endowment Funds	16,612,576

Donor Advised Endowment Funds

Aaron & Kristal Schmit Charitable Fund	32,037
Bradley & Julie Burgum Family Fund (E)	201,620
Brooks F. Burgum Donor-Advised Endowment Fund	39,428
Bryan & Cynthia Dvirnak Endowment Fund	13,227
Cofell Heritage Fund	321,481
Craig B. & Kathryn J. Oksol Family Charitable Fund	34,272
David Eckroth Charitable Endowment Fund***	26,131
Dirty Rock Endowment Fund	64,331
Donna Maston Charitable Fund	284,677
Evan's Support Endowment	2,420
Frank & Joanne Bavendick Family Fund	12,663
George & Linda Linz Charitable Fund	13,325
Hankey Family Charitable Fund	172,132
Hugh B. Cowan Charitable Fund	38,985
Hulstrand Family Fund***	286,354
I. A. Hendrickson Family Heritage Fund	79,777
Jim & Cyndy Robinson Family Charitable Fund	70,737
John & Anna Mae Hankey Charitable Fund	52,553
John C. Chatelain & Catherine S. Jenson-Chatelain Charitable Fund	83,481
Kaitlin (Schindler) Prins Memorial Endowment Fund	17,031
Kaye Jessen Endowment Fund	45,457
Kirchmeier Family Charitable Fund	45,989
Little Buddy Foundation	47,527
Lynn & Carla Schaible Charitable Fund	341,756
Marilyn Cross Hudson Legacy Fund***	302,503
Meyer Family Charitable Fund	539,973
Michael and Kari Goos Family Fund	29,371
Michael & Pamela Uran Charitable Fund	27,680
Mike & Patty Dwyer Family Ministry Fund	52,073
ND Fund for Animal Welfare	5,440
Peter and Stephanie Christianson Family Charitable Fund	203,634
Reuben & Clarice Liechty Family Donor Advised Fund	166,147
Risan Family Charitable Fund	92,584
Robert & Deanne Horne Cross Ranch Endowment Fund	15,697
Sam A. Johnson Endowment for the Arts & Humanities	12,594
Sharing Hearts Fund	51,213
Stacey Ackerman-Todd Pringle Charitable Fund	61,047
Steven D. Nelson & Wanda A. Uran-Nelson Charitable Fund	402,191
Thoreson Steffes Charitable Fund Endowment***	49,419
Timothy & Linda Duppong Charitable Fund***	9,983
Titan Machinery Charitable Fund	109,029
Troy & Kree Nelson Family Charitable Fund	54,646
Yaggie Family Charitable Fund	811,345
Total Donor Advised Endowment Funds	5,323,956

Committee Recommended Endowment Funds

Alice Baer Memorial Foundation	\$	50,121
Anne Carlsen Center for Children Endowment Fund		1,775,456
Bismarck Hebrew Congregation Endowment Fund		18,290
Clarence O & Ardeen E Sveum Endowment Fund		12,916
Connie Wold Wellness Foundation		150,869
Friends of Oscar O Endowment Fund		981
Gary Bird Charitable Endowment Fund		57,409
Mary E. Finley Endowment for Seniors of Walsh Cty. Fund		43,083
North Dakota Golf Foundation		115,562
Pioneer Square Emergency Fund		27,183
Total Committee Recommended Endowment Funds		2,251,871

Operating Endowment Funds

A.L. Braaten Fund		480
Arden Burbidge Fund		600
Bill & Jean Guy Fund		3,959
Brooks Keogh Fund		1,834
Charles Bailly & Company Fund		23,480
Cynthia Timmins Maule Memorial Fund		14,864
Deluxe Check Printers Operating Fund		53,330
Donald Schmid Fund		1,441
Dr. Richard H. & Mischelle Timmins Fund		66,849
First Bank Bismarck Operating Fund		5,641
First National Bank - Dickinson Fund		1,200
G.B. Gunlogson Estate Operating Endowment Fund		967,395
Harvest States Foundation Fund		6,001
J. Gerald Nilles Fun		600
Kevin J. Dvorak Fund		24,183
Lowell & Marlys Prince Fund		181
Mark Andrews Fund		1,200
Mr. & Mrs. Donald Shide Fund		463
North American Coal Company Fund		6,181
Operating Endowment Fund		0
Orvald J. Bjerken Fund		61,479
Otto Bremer Operating Fund		57,252
Peter W. Nielsen Fund		480
R.E. Meidinger Fund		4,212
Richard Crockett Fund		240
Rodney Melby Fund		11,935
Ruth Everson Fund		2,821
Security State Bank, Robinson Fund		240
Soo Line Railroad Operating Fund		12,244
Steiger Tractor Inc. Fund		2,401
T.A. Roney Fund		1,011
Theodore F Kessel Sr. Fund		3,121
Vernon E. Wagner Fund		17,693
William Haugan Estate Fund		84,625
Total Operating Endowment Funds		1,439,639

Total Endowment Funds **117,878,668**

Total Non-Endowment Funds **9,473,215**

Planned Gifts

Assets	\$	1,016,623
Liabilities, At Present Value		(512,940)
		503,683

Operating Fund Balance Without Donor Restrictions **478,643**

Total Net Assets **\$ 128,334,209**

Thank You To Our Donors

The incredible projects taking place in North Dakota because of NDCF grants happen because of passionate volunteers and generous donors. Thank you to all who use your resources to make North Dakota a better place to live, work, and play. You are making a difference in the lives of many.

3 Forks Services	Anderson Funeral Homes, Inc.	Larry W. Bakko
4th Corporation	Gary & Kriss Anderson	Myrna Ball
H. Dale & Marlene Aasand	Gordon Anderson	Diane & Marlin Balstad
Accountability LLC	Jeffrey & Loretta Anderson	B And B Fong LLC
Jessica & Ryan Ackerman	Kathleen Anderson	Bank Forward
Stacey J. Ackerman CFP	Lori Jean Anderson	BankNorth
Bruce & Carolyn Adams	Lorna Anderson	Baranko Environmental
Andy & Cheryl Rae Adamson	Maribeth Anderson	Melissa Baranko
Glenda Adkisson	Mary Anderson	GS & RJ Barker
David Gray Adler	Mike & Dianna Anderson	Kristi Barkley
Advanced Engineering & Environmental Services, Inc.	Gaylon & Robin Anderson	Mykell Barnacle
AgCountry Farm Credit Services	Stephen Anderson	Brent & Emmy Barnick
Ben & Catherine Albert	Steve Anderson	Debora Barros
Alexander Comets Youth Wrestling Club, LLC	Zane and Bonnie Anderson	Mark Bartle
Annell M Alger	Ethan Andress DVM	Kenneth A. Bartsch
Dominic Allmaras	Shirley Andrus	Base Utilities
Kerri & Todd Allmaras	Annetta Nies Family Trust	Baseview Dairy Queen
Melony & David Allmaras	ANOVA Family Health Center	Tiffany Bassingthwaite
Michael & Tracy Allmaras	Arc of Dickinson	Denise Bata
Alpha Opportunities, Inc.	Misty Arenstein	Brandon & Alyssa Baumbach
Mark & Sheri Aman	Wesley Argue	Brian & Shelly Bauske
AmazonSmile Foundation	Connie Armstrong	Bayer Fund
American Crystal Sugar Company	Marisa Armstrong	Beach School District #3
American Legion Charitable Trust Fund (Hankinson)	Rueben & Wanyce Arndt	Carol Beard
American Legion Post 181	Kendra & Carla Arthaud	Arlet Becker
American Legion Post #91 New Salem, ND	Gary & Patricia Artz	Janice Becker
American Legion Riders Post 97	Georgia Artz	Dale & Joanne Beckman
American Well Service, Inc.	Ashley Lions Club	Russell & Pamela Behm
American West: Att Charlotte Holverson	Aspire Bank	Bek Consulting LLC
AMKO Advisors	Assumption Abbey	Bell Bank & Trust
Lori Ammon	A to Z Tax Service	Bell Chiropractic
Anamoose Civic Club	Automation-X Corp	Vicki Bellin
Genevieve J. Andersen	Autorama: Dickinson	Wayne & Nancy Bell
Geraldine Andersen	Auxiliary to the ND Veterinary	Hector & Miranda Benavides
Steve & Tracy Anderson	Lucinda (Fahrer) Avriett	Nancy Bendickson
Ben & Janelle Anderson	AWE, LLC	Sharon & Herbert Bendixson
Bob Anderson	Marlys Bachamp	Roberta Berenberg
Dave & Pamela Anderson	Eleanor Bader	Allan & LaMae Bergan
Deb Anderson	Badlands Big Sticks Baseball Club, LLC	Ann Berg
Dr. Vernon & Jan Anderson	Badlands Hydrovac Services LLC	Claudia J. Berg
	Harvey & Geraldine Baer	Ellis Berg
	Mary & Anthony Bagan, Trustees	Erika Berg
	Jerome & Marilyn Bakke	Robert & Judith Berger
	Brad & Paula Bakken	James & Carrie Berg
		Douglas & Barbara Berglund
		Alan & Pauline Bergman

Nelson Berg
Joann Stacy Bergrud
Paul & Shirley Berg
Jana Berndt
Matthew & Ali Berndt
Shirley Berndt
Tyler Berndt
Brandon Berry
Colleen & Leland Bertsch
Lonnie & Jean Bertsch
Tom & Stephani Bertsch
Thomas Bettenhausen
Betterment Trust Fund
Denise Beusen
Mark Beyer
Jim & Mary Beyer
BHInc
Leslie Bieber
Rhonda Biel
Susan Biesiot
Kari and Charles Bigelow
Rick & Nancy Bigler
Shirley Ann Bill
Amanda and Derek Binstock
Gary Bird
Edward & Doris Bischoff
Bismarck Downtown Artist
Cooperative LLC
Chris Biwer
Keith & Marion Bjerke
Beverly Bjornson
Blackridge Capital LLC
Blackridge Enterprises LLC
Glenn and Joann Bladow
Jeremiah & Angie Blahna
Blaine Moberg Insurance
Audrey Blair
Carolyn Blake
George & Connie Blank
Kathleen Blessum
Ronald & M. Jean Blilie
P. James & Constance Blomberg
Dick & Shirley Blomster
Sara Bloom
Dallas & Mary Ann Boeddeker
Nancy Boehmer
Sandy & Tim Boehm
Judy Boe
Sandra & Tracy Boe
Boe's Tree Care, LLC
Tracy Boe
Bill & Monica Bohn
Carmen & Mark Bohn
Charles & Mercedes Bohn
Douglas Boknecht

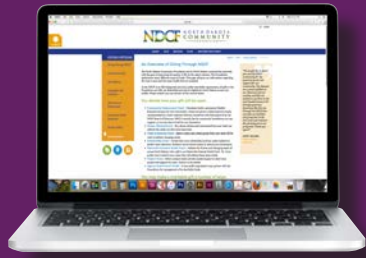
Debbie Bolin
Robbie J. Boll
Ronald & Marlys Boll
Debbie & Thomas Bolton
Jason Bonderson
Curt & Cheryl Bonn
Frederick & Kathy Bonn
Tim & Sandy Bonn
Lenee Bookhardt
Cynthia & Keath Borchert
Kristen Borysewicz
Michael & Cheryl Bostyan
Fred & Judy Bott
Faye & Darrell Boudreaux
Jean Boulduc
Bourbon Barrell BBQ, LLC
Andrea Bowman
Bruce & Teresa Bowman
Bowman County Public
School Foundation
James & Linda Boyd
Marie T. Boyle
Arne Boyum
Daniel & Melissa Braaten
Dennis & Starr Braaten
Jennifer Braaten
Kathleen Braaten
Rae Dell Braaten
Wayne G. Braaten
Brackelsberg Farms
Nicholas & Nickole Bradbury
Douglas Bradford
Paul Brakke
Bruce & Vicky Brandvik
Rachael Brash
Bette Bratager
Heath & Rebecca Braun
Marian & Niel Braun
Tammie Braun
BRAVERA Org: Dickinson
Bremer Bank - Carrington
Bremer Bank Casselton
Bremer Bank Larimore
Bremer Bank, National Assoc
Bremer Bank Rugby
Nick & Janee Brendemuhl
Kathy Bren
Mary Joyce & Robert Breuer
Brightside Surgical LLC
Duane and Diane Bring
Lynn & Elizabeth Bring
Ellen Britton
Brock Brend Construction, Inc.
Pam Broderick
Becky Brooks

Rich Brossart, EA, Inc.
Jon & Robin Brosseau
David & Bobbi Brouillard
Nicole Marie Brown
Perry & Cammie Brown
Mary Pat Bruels
Bradley & Susan Brummond
Toni Brummund
Sheila Brunner
Reynold & Janice Buchholz
Bridget Bullinger
George & Marlene Bunn
Randy & Teresa Buntrock
Greg Burbach
Dr. James & Jeanne Burbidge
Nyle & Arlene Burchill
Sarah Burchill
Julie & Tim Buresh
Sharon Burgard
Julie Burgum
Steve Burian
Chris & Christine Busche
Business & Professional
Womens Club
Dina Butcher
Linda Butts
Carl B. Bye
Ronald & Shirley Bye
David Bymoan
Robert Campbell
Shannon Campbell
Madelyn Camrud
Linda Candrian
Breanne & Nathan Carlson
Clare & Lisa J. Carlson
Gary & Jean Carlson
Gary & Karen Carlson
Mary C. Carlson
Nancy & David Carlson
Kerry J. Carpenter
Brian & Heather Carr
Carrington Dental Care
Carrington Drug
Gary & Eugene Carroll
Deb Carter
Nathan & Susan Carter
Ronald & Sandy Cartwright
Cash And Carry Lumber
Assoc., LLC
Craig Caspers
Casselton Community
Endowment Fund
Casselton Veterinary
Service, Inc.
CDI Services Inc.

Center Mutual Insurance Co.
Central City Grain
Central Pharmacy
Centrol Benevolence Fund
Brenda Cerkoney
Chris & Shannon Chambers
Charbonneau Car Center
Charbon Township
David A. Charles
John & Catherine Chatelain
Chris Christensen
JoAnne Christensen
Steven & Sandra Christensen
Kim & Gail Christianson
Bruce & Linda Christianson
Rebecca Lynn Christianson
CHS Ag Services
CHS Inc.
Patricia M. Churchill
Circle Sanitation, Inc.
City of Cando
City of Emerado North Dakota
City of Park River
Deborah S. Clark
Clarke & Associates, PC
Pam & Wayne Clarksean
John & Sydney Clark
Class of 1960 Cooperstown
High School
Richard & Ruth Clemenson
Lorelei D. Clemetson
Cmor Energy Services
Coca-Cola of Williston
Community Credit Union
Community Violence
Intervention Center
Jeffrey Conlogue
Linda Conneran
Carol & Patrick Connole
Connie Connolly
ConocoPhillips Bakken
Mary Ann Conrad
Construction Engineers
Contracting Unlimited, Inc.
DuWayne Cookman
Cooper Implement Co. Inc.
Janice Cooper
Diane & Richard Cordes
Cornerstone Bank - Fargo
Cotter Dental PC
Council on the Arts
Diane Covdes
Alexus & Logan Cox
Jacqueline Helen Creed
Crescent Energy, Inc.

Elizabeth Gail Crider
Haylee Cripe
Carol Ann Crissler
Russell Lee Croley
Richard A. Crooks
Crossfire LLC
Angela Cruuff
CSI Compressco
Sue Currie
Shane & Angela Cymbaluk
Travis & Amy Czapiewski
Kathy Czichotzki
Dacotah Bank - Aberdeen
Dacotah Bank - Dickinson
Dacotah Bank - Rolla
Donna Dahlgren
Hans & Katie Dahl
Mathias Dahl
Richard & Bernice Dahl
Tanya Dahl
Dakota Anglers
Dakota Central
Telecommunications
Dakota Hills Electric, Inc.
Dakota Steel Art
Dakota Territory Air Museum
Dakota Western Bank - Bowman
Dakota Western Bank -
Hettinger
Dakota Western Bank - Regent
Holly Dalen
Tracy Dalman
Jack & Betsy Dalrymple
Michele Daniels
Barbara Danks
Dan Porter Motors, Inc.
Dan Rosenau Farm Inc.
Daryl Kuhnhenh Memorial
Ride
Robert & Carrie Davidson
Bill & Susan Davis
Darrin Davis
Kathy Davis
D&B Pizza
Degree Of Honor
Darren Deile
Cynthia Delano
Mike & Annie Demers
Mr. Joshua Demorrett
Sherri Denne
Department of Career &
Technical Education
Kathy Depute
Shirley & David Destache
James & Elizabeth Deutsch

Michelle Devereaux
Mary S. Devlin
Dickinson Area Community
Foundation
Downtown Dickinson
Association DID
Laurie & Kim Dietz
Dietzler Electric
Carol Dilse
Leann Dilse
Susan M. Dingle
Jaden & Alexis Disher
Craig & Debbie Disher
Carol Disrud
Jason & Cheryl Disrud
Patricia Disrud
DistributionNOW (DNOW)
D & M Farm Account
Cameron & Jan Dodge
Mariann Doeling
Janet & John Doerner
Lisa Dolezal
Domine Sales & Service
Justin Donaldson
Mark Donarski
Daniel & Pamela Donlin
Anonymous Donors
Dawn Doohen
Doosan Bobcat Clark
Equipment Company
Al Dosch
Janet Dotzenrod
Double EE Service Inc.
Doug & Mary Jack & Jill
Janel Dowhaniuk
Donna Mae Dragseth
Drayton Community
Chamber of Commerce
Kelly and Kim Dressler
Laurie Marie Drewlow
Charles & Linda Duchscher
Diane Duchscher
Duchscherer Supply, Inc.
Rhonda Dukart
Shirley Dukart
Daniel & Carla Duletski
Robert Dumas
Kimberly Dungan
David & Ellen Dunlop
Sharon & Charles Dunlop
W.L. Dunlop
Kari Dunn
Terry & Jolene Dunphy
Duppong's Inc.
Tim and Linda Duppong



Types of Gifts We Can Accept:

Cash, check, or credit card

Transfers of Stock

Real Estate

Agricultural Commodities

Other Ways to Give:

Make NDCF the Beneficiary of your Life Insurance Policy or Trust (be sure to specify which fund at NDCF you wish to benefit)

Establish a Charitable Gift Annuity at NDCF and receive a guaranteed annual payment for life.

Take advantage of the IRA Charitable Rollover - transfer money directly from your IRA and have it count for your RMD, but not your income!

Leave a gift to a fund at NDCF in your will.



Linda & Jim Dupre
 Kevin & Beth Dvorak
 Alvin & Phyllis Dvorak
 Daniel Dwyer
 Clark Dybdahl
 Ruby Dybedahl
 Eagles Aerie No 2923
 New Rockford
 Dan & Lacey Eastgate
 Ebeltoft Sickler Lawyers PLLC
 Bradley Ebensteiner
 Mick Eberle
 David Eckroth
 Economy Oil Inc.
 Economy Propane, LLC
 Donna Edinger
 EDI Q2 ALS LLC
 Ed's Lawn Care
 Edward H. Schwartz
 Construction Inc.
 Tyler Edwards
 Harold & Marjorie Edwards
 Edwards Mother Earth
 Foundation
 Robert & Karen Edwards
 Grace Ehlers
 Karan Ehlers
 Karen Ehrens
 Alice Eichholz
 Karen Eichhorn
 John Eide
 Andrew Bartholomay &
 Tracy Ekeren
 Daniel & Amanda El-Dweek
 Elevated Fishing and
 Milling Tools
 LaDonna Elhardt
 Elick Funeral Home
 Brandon & Melissa Elick
 Ellen Michaels, LLC dba
 Clothes Mentor
 Gary Eller
 Elle's Boutique LLC
 Ellie Papineau LLC
 Kurt & Cheryl Elliott
 Elm River Credit Union (Page)
 Emerado-Arvilla Lions Club
 Emerado Farmers Elevator
 Donna Emerson
 Empire Oil Company
 E & M Services LLC
 Tom & Corrie Enander
 Enderlin Alumni Association
 Christa & Kyle Enebo
 EnerStar Rentals

Engagement PLLC
 Steve Engbrecht
 Colleen & Mark Engebretson
 Pamela & James Engelhardt
 Kris Engelhardt Petrik
 Jake & Lisa Engels
 June Enget
 John & Cecilia Enns
 EPIC Companies
 Eppler Law Office
 Don & Rachel Eppler
 Florence Erdle
 Mark & Loraine Erdman
 Rita Erdrich
 Tom & Ann Erickson
 Corinna Erickson
 Glenda & Lyle Erickson
 Harlyn & Laurel Erickson
 John E. Erickson
 LaVonne Erickson
 Lynn & Mavis Erickson
 Maureen Erickson
 Robert & Cleo Erickson
 Teresa Erickson
 Mr. & Mrs. Wesley Erickson
 Barbara Erlandson
 Mary & Jeff Eрман
 E Services LLC
 Calvin & Connie Eslinger
 Ronald W. Espeland
 Essentia Health
 JoAnna & Kevin Etzler
 Bernard & Mary Ann Etzler
 Evangelical Bible Church
 Evans Funeral Home, Inc.
 Bruce & Barb Evanson
 Ileen E. Everett
 Expression Pediatric
 Therapy PLLC
 Eyes by Design
 Donald & Pamela Facey
 Julie Fadden Langemo
 Peggy Fadness
 Family Chiropractic &
 Massage PC
 Fargo Jet Center
 Farmers Union Insurance
 Finley
 Farmers Union Insurance
 Kenmare
 Thomas & Nancy Farnham
 Kenneth & Helen Farrell
 Timothy & Julie Farrell
 Nicole Fath
 Ann Faught

Jeremy D. Fayette
 Melissa Faul
 Kristin Fehr
 Elaine Feland
 Elizabeth Fenn
 Beverly Ferderer
 Fessenden Cooperative
 Association
 Alicia L Fettig
 Dion Ficek & Maripat Biel-Ficek
 Jane Fick
 Bruce & Melissa Fingerson
 Finley Motors, Inc.
 Mary Moen Finseth
 Fire & Ice Refrigeration
 First International Bank &
 Trust (Rugby)
 First Nations Development
 Institute
 First Presbyterian Church -
 Bismarck
 First State Bank of Harvey
 First State Insurance Agency
 of Rolla, Inc.
 First United Bank of Park River
 First Western Bank & Trust
 Bismarck
 Sherri Fisher
 Brian & Amanda Fisher
 Jake & Megan Fisketjon
 Rhonda Fitterer
 Bradley & Dawn Fitzgerald
 David Fixen
 Kurt & Barbara Fixen
 Tyler Fixen
 Mary Fjeldahl
 Rachael A. Flagstad
 Dawn & Brad Flaten
 Jacqueline Flaten
 Keith & Susan Flaten
 Sherry Flaten
 Donna Fleming
 Cathy Fletschock
 Jerry & Carol Flickinger
 Mary J. Flikke
 FM Area Foundation
 Judith & Patrick Foley
 Brad Fong
 Brenda Fong
 Carter & Stephanie Fong
 Lola Fong
 Carol Fordahl
 Foremost Well Service LLC
 Forks Lath & Plaster, Inc.
 Dale Formaneck

Marlowe Fortune
 June Foss
 Darcy L. Fossum
 Etta Fox
 Shirley Fox-Trydahl
 James Fragodt
 Karen Frank
 Donald & Kelley Franklund
 Fraternal Order of Eagles
 Aerie No 2328 Dickinson
 Fraternal Order of Eagles
 Watford City
 Gene Frazer
 Cheryl Fredenburg
 Fredrikson Funeral Chapel,
 LLC.
 Freedom Financial Group
 LLC
 Reshell & Curtis Freeman
 Phyllis & Leland Freidt
 Joe and Sandi Frenzel
 Sandi Frenzel
 Beverly Fretheim
 Carol Frey
 Linda Fridrich and family
 Friends of NRHS
 Mary Friesz
 Eugenia Frigaard
 Jerome & Wendy Fritel
 Robert & Diane Fritel
 Leonard Fritz
 Vernetta Froehlich
 Rick and Nancy Froemke
 Sharon Froeschle
 Judy Froseth
 Joelle Fruh
 Curtis & Joanna Fuchs
 Jim Fuglie & Lillian Crook
 Parrish Furr
 Richard & Karin Fursather
 Janet Gagelin
 G.G. Gailfus
 Robert & Janice Gailfus
 Scott & Sarah Gailfus
 Clyde & Kathleen Galliger
 Dr. Shannon Galster
 Stacy & Shannon Gangl
 Arthur & Marilyn Gapp
 Leonard & Carolyn Garceau
 Joe & Kimberley Garcia
 Garr Dental Center
 Garrison Lumber
 Jennifer Gast
 Susan & James Gates
 Gaviion Global AG

Holdings LLC
 Ashley Gefroh
 Lois Gefroh
 Kara L. Geiger
 Henry & Kolette Geiger
 Sarah & Bill Gelsingier
 David & Lori Geltel
 Marjorie Gensrich
 Thomas Gerber
 April Getz
 Dwane & Candice Getzlaff
 Corey & Cindy Getzlaff
 G&G Garbage
 Lisa Giese
 Barbara Gilbertson
 Tom Gilbertson
 Inez Gillaspey
 Brandi Gillespie
 Christopher Gillespie
 Diane Gira & Valerie Nelson
 Girl Scouts - Dakota
 Horizons Troop 20231
 Roger & Renae Gjellstad
 Melissa Gjermundson
 Myrna Gjesdal
 Richard Glaesemann
 Tom Glandt
 Matt & Nara Glasner
 Tracy Godejohn
 Carolyn & Ernie Godfread
 Tammy Goerger
 Go Foam LLC
 Golden Rule Inc.
 Patricia Goodall
 Steve and Patricia Goodall
 Good Friends Bar and Grill
 Goodnight Midstream
 Todd Good
 Gooseneck Implement Harvey
 Gooseneck Implement Minot
 Goose River Bank
 Michael and Kari Goos
 Deb & Gary Goplen
 JoAnn & Randy Gordon
 Melissa Keating Gordon
 Linda & Gene Gorseth
 Marshall & Anne Goss
 Carolyn & Ronald Gotteberg
 Marshall & Cynthia Goughnour
 William & Sandra Goughnour
 Paul & Lesa Gowing
 Grace Realty LLC
 Grafton Rural Fire Protection
 District
 Kathleen Ann Grandalen

Larry & Halaine Grandalen
Grand Forks Heating, Inc.
Grand Forks Region Economic
Development Corporation
Scott & Barb Granger
John & Eldonna Grann
Kelly Gratton
Bonnie Graves
David Gray
Greater Twin Cities United Way
Debra Greenwood
Kirk Greff
G & R Grain and Feed
Carolyn & Richard Griffin
Julene Griffin
Richard & Frances Grindeland
Arthur Grochow
Glenn & Melissa Grommesh
Brian & Paula Grosinger
Joan Grossman
James & Lori Jo Grosulak
Gil & Karen Groth
Shelly & John Grueneich
Holly Gruhlke
Kaye Gudbranson
Evan & Brianna Guler
Josh & Jodi Guler
Benjamin & Brett Gullicks
Dean & Patricia Gulsvig
L. Gunkel
Orla A. Gunlikson Smith
Paul Gurholt
Gustafson Septic Service, Inc.
Lynn & Bob Gustofson
John & Ruth Haas
Samarah Hadley
Darwin & Tammie Hagemeister
Hagen Dental, PC
Donita & Stanley Hagen
Louann Hagen
Hager Excavating
Andrew & Kristen Hager
Mary Hager
Curtis Hagert
David & Karen Hagert
Curtis & Roberta Hagert
Cheri Halcrow
Steve & Carol Hall
Michael Halldorson
June Haller
Joan Hall
Pamela & John Halone
Marie Halstead
Eldon Halvorson
Jim & Naomi Hambrick

Andrew & Virginia Hamilton
Kirk & Vicki Ham
Bruce Hammond
David & Jana Hankey
John & Anna Mae Hankey
Hankinson Drug, Inc.
Glenice Hansen
Jody Hansen
Rose Hansen
Jack & Sylvia Hansen
Betty and Rodger Hanson
Marlin & Charlene Hanson
DeLores Hanson
Hanson Financial Associates
LLC
Susan & James Hanson
Renee & Larry Hanson
Harbison-Fischer
John & Becky Hardy
April Haring
Renee & Brad Harju
Traci Harrington
Marie Harstad
Lisa & Mark Hart
Shane & Celeste Hart
Thomas Hartl
Rick Hasbargen
Verna Hasbargen
Jerry Hashbarger
Donald & Marlene Hastings
Hatton Men's Club, Inc.
Dale & Diane Hauck
Dennis Hauck
Ronald & Frances Hauck
Sylvia Hauck
Darvin Hauff
Lane & Kristan Haugen
Suzanne L. Haug
Christine Hause
Dick Hauser
Angela Haverluk
Dean & Shelley Hayes
Headwaters Lions Club
Heartland Trust Co Corporate
Heart River Voice
Joan & Duane Heckaman
Garret A Hecker
Marilyn & Vern Hedland
Larry & Linda Heen
Alyce Heer
Mary & Bruce Heggen
Mitch & Donna Hegstad
Lynette Heidecker
Gerald & Lynette Heidecker
James & Sherry Heilmann

Steven & Pamela Heim
Christ & Judy Heintz
Cynthia Heintz
Caralee Heiser
Karla Heldenbrand
Gregg Held
Kari & Chris Helgoe
Marcia Hellandsaas
Zachary Hans Hellekson
Richard & Michele Helming
Carol and Keith Hendrickson
Larry & Dianne Hendrickson
Wesley & Karen Hendrickson
Hendrum Candle Works Co.
Dan and Rhonda Henneman
Tim Hennessy
Carol Herauf
Jean Herauf
Rhonda Herauf
Shirley Herbel
Connie Herberg
Sandra & Perry Herland
Tina Hermanson
Molly & James Herrington
Hertz Funeral Homes, Inc.
Thomas & Julie Herzog
Hettinger Area Chamber of
Commerce
Hideaway Hair Salon
High Plains Dental, P.C.
James & Janet Hildreth
Mike & Barbara Hillebrand
Hillsboro Vets Club
Michelle & Kadon Hintz
Bruce & Jodi Hirschert
Morrill Hirsch
Jeffrey A. Hitland
John Hitz
Gisela Hodnefield
Gary Hoefs
Jared & Erika Hoerner
Ambrose & Charlotte Hoff
Marita Hoffart
Charlotte Hoff
James & Debora Hoffert
Joseph & Joan Hoff
Jody & Marla Hoff
Marie Hoff
Ron & Sue Hoff
Tracey & Jackie Hoff
Allen & Lynn Hohbein
Erika Hohenstein
Whitney Holler
Steve Holm & Margaret
Bjornson-Holm

Phyllis & Mervin Holter
Alice M. Holweger
David & Rachel Holzwarth
J.T. Homan
Home & Land Company
Melanie Homelvig
Autumn Homiston
Mary Kay Hondl
Dean & Rosemary Hoover
Hope Auto Glass, LLC
Marly Hopfauf
Cristi L Hopping
Saralee Hoselton
Craig & Ann Hougen
Jane Hougen
Stephanie Hougen
Dale & Marleen Houkom
Kari Houser & William Stobb
John & Karen Hovey
Phyllis & Jerry Hovland
Ms. Melana Howe
Starla & John Hoyer
HQ Trivia Donation
Gina K. Hrubby
Cheryl Huber Mizell
Charles Kent Hudson
Cray Hudson
Kent Hudson
Emma Huelsman
Kenneth & Kathy Hueske
Tim & Faye Huether
Baker Hughes
Larry and Nancy Hulstrand
Erin Humphrey
Stephanie Hunter
Christine Hurley
Kris Hurt
Randy & Laure Huschka
Roger & Kirsten Huschka
Scott & Elizabeth Huso
Katie & Thomas Hutchens
Curtis & Barb Huus
Michelle M. Huus
Craig & Lona Hystad
Alan & Kari Idso
John & Peggy Ihry
Industrial Electric Service
Integrated Piping Consultants
LLC
Interstate Engineering
Alexis Irmen
Pennie Irmen
Rachelle Dee Jackson
Larry Jacobsen
Leroy Jacobsen

Trevor & Elizabeth Jacobsen
Gerry Jacobson
Rick Jacobson
Todd & Terrille Jacobson
Travis Jacobson
Kristin Jaeger
Crystal Jahner
Kari Jahner
James D. Langseth Family Trust
Jerri & Kole James
James River Dentistry
James S. & Janet G. Loos Fund
Jennifer Janecek-Hartman
Jane Skjei Estate
Christine Jas
J&A Service
Jawaski Glass & Repair
Mark & Kristi Jean
Cole & Mary Jendro
Jena & Michael Jenks
Dave & Kathy Jenrich
Arthur & Beverly Jensen
Eleanor Jensen
LeRoy & Evelyn Jensen
Don & Leeann Jensen
Nancy & Gladwin Jensen
Tara Jensen
Tonya & Kyle Jensen
Jeremiah Program
Jerry D. Schwartz
Construction, LLC
Patty Jessen
J & G Landscaping Inc.
Robert & Emily Jirak
JJPR Pizza, LLC DBA Pizza
Ranch: Jason Fridrich
Joe's Auto Service LLC
Constance Johnsen
Brian K. Johnson
Cheryl M. Johnson
Clark & Lisa Johnson
Darianne Johnson
David & Valerie Johnson
Gregory Johnson
Dr. Steven and Linda L.
Johnson
Erin & Vance Johnson
Johnson Farms
Georgia Johnson
Gerald Johnson
Joel Johnson
Kathy Johnson
Linda Johnson
Melissa & Walter Johnson
Mike & Stephanie Johnson

Michelle Johnson
Nancy Johnson
Ray & Marilyn Johnson
Renee & Charles Johnson
Robert & Kathleen Johnson
Roger & Linda Johnson
Roland & Delores Johnson
Scott Johnson
Scott & Joni Johnson
Johnson's Plumbing Inc.
Susan Johnson
Valleri & Randall Johnson
Vaune Johnson
Christie Jones
Leonard & Eileen Jones
Jon Steven McLain Living Trust
Mark Jorgensen
Nevada & Wendy Jorgenson
Jan Jost
Corlis Juliuson
W. Stanley & Carol Juneau
James & Linda Juntunen
Melvin & Betty Juntunen
Steven & Rebecca Juntunen
Sue Juntunen
Richard & Sharon Jurgens
B J Kadrmas
Dawn & Shawn Kadrmas
Jo Marie Kadrmas
Beth Kainz
Margaret & Gregory Kaleva
Carl & Shell Kannianen
Colleen A Karels
Susan & Donald Kasprick
Darrell & Tanya Kath
Katie Kunz Family
Lance Keator
William Keegan
Michele R. Keithley
Kimberley Keller
Linda Keller
Kelley's McDonald's
Jason & Chelsey Kemnitz
Mary Kempel
Kenmare Park District
Margaret Kenny
Terry & Shari Kensok
Marilyn Kent
Frank P. Keogh
Angeline Kesler
Kathleen Kessel
Patty Kettel
Peter & Erin Kilbride
Ray Ann Kilen
Killdeer Mountain

Manufacturing, Inc.
Patricia Kilwein
Sharon Kilzer
Maria King
Connie Kinnoin
Doug Kinnoin
Jason & Ann Kirchmeier
Tessa Kirchner
Jim & Liz Kirkeby
Cleo Kirkland
Kirkwood Bank & Trust -
Dickinson
Kirkwood Scheels
Carl & Debra Kirschenheiter
Frank & Earlene Kirschenheiter
Kiwanis Club of Wahpeton-
Breckenridge
James & Marlys Kjelland
Amanda Klein
Betty & Charles Klein
Dennis & Linda Klein
Scott & Kristin Kleinjan
Karen Klein
Lawrence Klemer
Dawn Kleppe
KL Haugen LLP
Alicia & Stewart Kline
Kline Family Dentistry PC
KLK Bookeeping
Rick & Jill Klose
KLX Energy Services LLC
Colin Knapp
Rebecca & Jered Knaus
Robert & Arlene Knecht
Knights of Columbus
Bill Knudson
Kari L. Knudson
Bethol Knutson
Dean & Donna Knutson
Rodney & Sherilyn Koch
Kodabank
Brenda & Karl Koehmstedt
Terry & Sandy Koepplin
Richard Kofoid
Kathy Kohler
Roger & Sandy Kohlman
Pamela Kolling
Kool Kreations
Kooner's Gas & Things
Dawn Marie Kopseng
Loren R. Kopseng
Andrew & Julie Kordonowy
Janet Ann & David Koski
Larry & Diane Kouba
Engelbert & Deborah Kraft

Kathy & Mylo Kramer
Matthew & Julie Kramlich
Bonnie Krause
Rick & Susie Krause
Gordon & Cheryl Krech
Karen Louise Kreil
Casey & Justin Krieg
Gregory & Allison Krieger
Lori Krieg
Angela Kritzberger
Kenneth & Sharon Kroeplin
Tilford & Mary Kroshus
Thomas & Beverly Krous
David Krueger
Loren & Laurie Krueger
Stanley & Marilyn Kruger
Kubik, Bogner, Ridl & Selinger
Dennis Kubischta
Deborah Kudrna
Noreen Kudrna
Bonnie & Dennis Kuehnemund
Kukowski Properties LLC
John & Trudy Kulstad
Bonnie Kummer
Darla Kuntz
Rosalie Kuntz
Vicki & Dennis Kunz
Dean & Sharon Kurtz
Judy & Wayne Kutzer
Elizabeth Kylo
Justin & Jenna Kylo
Ladbury Funeral Services
Sherry Ladd
Jerry & Delores Lafferty
Brandi LaFramboise
Dale Lagodinski
Mike & Karen LaLonde
Blake & Ashley Lampert
Andrew and Melinda Landman
Taryn Landowski
Laurel Langan
Diana & Steven Lange
Shelli & Timothy Langerud
Roger Langley
Gontran Langowski
Fay Langseth
Terri Lang
Clarice Langved
Cheryl & Tim Lantz
Joan Laqua
Pamela Larimore
Marshall and Susan Larsen
Larsen Service Drug, Inc.
Chester & Karen Larson
Dan Larson

Darlene Larson
Mr. Franklin G. Larson
Kimberly Carol Larson
Linda L. Larson
Patricia Larson
Spencer & June Larson
Verne O. Larson
Donald & Joni Latozke
Laughing Sun Brewing
Company, LLC
Josh Lauritsen
Lautt's Auto Body & Towing,
Inc.
Kevin & Karen Law
Richard & Shirlene Lawlar
Lawrence Zillgitt
Frank & Kim Layman
Alan & Cathy Leadbetter
Chad & Amy Leas
Peggy Ledahl-Schmidt
Gary & Barbara Lee
Gary & Joan Lee
Jason Lee
Mike and Sherryl Lefor
Susanne Lefor
Legacy Cooperative
Legacy Tool & Rental LLC
Legendary Smiles, PC
Gail & James Lein
Nicole Leininger
Amanda & Brandt Lemer
Lemer's Ace Hardware
Molly Lenaburg
Kerry Lentz
Tom & Kelly Leo
Edward Leonard
Joyce & Michael Leonard
Leon's Building Center, Inc.
Deborah Lervik
Kathy Lesnar
Eric & Patti Levorsen
Aaron & Julie Levorsen
Levrich Farms Inc.
Melvin & Beverly Liebelt
Susan Hougen Lieberg
Clarice Liechty
Patty & Steve Lies
Lignite Energy Council
Lincoln State Bank
Don & Beverly Lindbo
Jonelle Lindbo
Roberta Lindbo
Paul Lindell
Vernell & Pat Lindemann
Rosemary Linderman Worlein

Joy & Duane Lindgren
Dean & Ruth Lindgren
Megan Lindquist
Wes & Barbara Lindvig
D.A. Lindvig
Jack & Rosemary Line
Joshua & Sasha Ling
Billijo Link
Joel & Jan Linneman
George & Linda Linz
Lions Club of New Rockford
Robert & Tracy Lipetzky
Bernie & Marilyn Lipp
Linda Little
Marci & David Liuska
Kelsey R Loewen
Phyllis Loftsgard
Dustin & Rachel Logan
Ronda Logan
Log Cabin Liquors
Catherine Logosz
Earl & Vivian Loken
Margaret Helen LoMurray
Tammy & Corey Longnecker
Micheal E Longtin
Michael Dwayne Loran
Patricia & Julius Lorz
Nathan & Kristen Lotvedt
Jill Louters
Karla & John Lovaasen
Arlene Lovgren
Lt Theo R Zech American
Legion Post #180
Sally M. Lubrich
Charles & Nancy Ludwig
Richard & Myrna Lundby
Candy Lund
John & Ann Lundeby
Ron Lundquist
Ronald & Leah Lundquist
Warren & Carmen Lyons
Kristi Maas
Yvonne Machart
Scott Macintosh
Philip & Bonnie Maciver
Angie Mackey
Galen & Glenda Mack
Scott & Valerie Mack
Milton & Clarice Madison
Charles & Kausha Magill
Main Street Saloon
Lori A Malmberg Tostenson
Robert & Brenda Malo
Janice Manly
Marathon Petroleum Company

Chris Marcusen
Ray Anthony Marks
Loretta A. Marshik
Cheryl & Gerald Martin
Martin Construction, Inc.
Delphine Martin
Melinda Martin
Norma Martin
Wayne G. Maruska
Mary's Bookkeeping & Tax
Service LLC
Judy & Michael Maslowski
David Mason
Mary Massad
G. David & Gaylene Massey
Laurel Massey
Donna Maston
Josh & Amanda Metehs
Rebecca Mathern-Jacobson
Carmen Mathis
Aaron Mattson
Andrew & Denise Mau
Randall & Kathleen Mauch
Judith Maxson
Monty & Kay Mayer
Monte McAtee
Holly J. McBee
Ralph J. and Collette McCanna
Michael McCann
Jenna McCarthy
Mary Jean McCartney
Jay & Bobbi Jo McCleery
Bethany McCloud
Edward McConnell
Michael McCormack
Dennis E. McCoy
Brad & Tracy McCullough
Eileen McDermott
Brian McDonald
Chris & Kelly McDonald
Roger & Virginia McDonald
Ken McDowell
Metta McDowell
Kelly McElvain
Lisa & James McEvers
Martha & Timothy McGillvray
McGuire in Rugby
Mike McHugh
Cynthia McKay
McKenzie Public Schools
Dist #1
McKenzie Public School
Foundation
Joy McLain
Lindsay McMillian

MDU Resources Foundation
William & Monica Meadows
LP & LD Meberg
Larry & Jacqueline Medenwald
Sonia & Leroy Meehl
Rollin Mehlhoff
Donovan & Judy Meier
Gayne & Barbara Meiers
Ryan & Renae Meisch
Dr. Roger E. Meisner
Steve & Corrine Melberg
Rodney & Diane Melby
Mary Meldahl
Robert Z. Melnick
Members Trust Company
Timothy & Stacey Mendro
Merchants Bank (Rugby)
Elizabeth Sherrill Merritt
Larry & Diane Messer
Richard & Melissa Messerly
Marvin & Laura Messer
Metro Area Ambulance
Service, Inc.
Corey & Rachel Meuchel
Grace Shields Mevissen
Mewes Farms, Inc.
Randall & Jeanne Mewes
Carmen L. Meyer
David & Candace Meyer
Kathleen Meyer
Mya Meyer
Meyers Department Store, Inc.
Shirley Meyer
Terry & Carole Meyers
Audrey and Marvin Michalenko
Jeff Michalenko
Joel & Claudia Michelson
Cameron & Danielle
Mickelson
Cindy & William Mickelson
John & Eileen Mickelson
Roberta & Richard Mickelson
Mickey Hoffner Memorial
Mid-Dakota Lumber & Supply
Mid Dakota Medical Building
Partnership
Gay Midgarden
Sam & Kristi Midgarden
Paul Midtbo
Midwest Erosion Control
Stefani Mikkelson
Wayne & Dianne Millar
Allen & Kathryn Miller
Leo & Colleen Miller
Cora Miller

Denise Miller
Dewey Miller
Dorothy Miller-Fenske
Lawrence & Kathleen Miller
Paul & Kristina Miller
Larry & Jeanette Miller
Lisa and Mark Miller
Scott & Maria Miller
Penny Miller
Perry & Denise Miller
Michele Mills
Janice Marie Mimnaugh
Lyle & Anna Mae Mineke
Aric & Tami Mines
Minot Aero Center
Mrs. Garry Mischke
Hovi & Brock Mitchell
Kristin L. Mitchell
Marsha & Scott Mitchell
Sandra Mitchell
Alisa Mitskog
MJ Nipstad Management
Solutions
Darrell & Connie Moberg
Adrienne Moe
Ashley Moe
Evan & Marie Moe
Marie Moe
Maureen Moe
Nick Moen
Kairouan Ann Moffet
Tom & Mickie Mohs
Sandra Mongeon
Brice & Reeshella Monson
Jacob & Katie Monson
Kathy & Roger Monson
Pamela & Leon Montag
Pamela Montee
Michael Montplaisir
Deborah Moomjian
Edward & Tammi Mooney
Jennifer Moore
Joel & Dawn Moore
Guy & Sandra Moos
David A. & Joann D. Moquist
Michelle & Jonathan Moquist
Chris & Melissa Morden
Dennis Morrison
Carla Mortensen
Morton County
Clarice Mosolf
Sue Mosser
Brian & Barbara Mothershead
Anne Mrachek
Ron & Gwen Mueller

Janitda Muller
Sharlene & Gregory Muller
Violet Muller
Linda Muma
Munro Builders Supply
Charles & Geraldine Munro
Eric Munro
Joshua Munro
Maureen Munro
Munro Motor Company
Paul & Paula Muinro
Robert & Louann Munson
Robert & Patsy Muri
Kristie Murray
Jane Myers
Kent & Alyson Myhre
Naastad Brothers, Inc.
Kallie & Benjamin Naastad
Andrew William Nagorski
Nancy Johnson Charitable
Fund
NA Properties Inc.
National Trust For Historic
Preservation
ND Career & Technical
Educators Assn
ND Energy Services
ND FFA Foundation
ND Pilots Association
ND Veterinary Medical
Association
ND Water Education
Foundation
Barbara Neameyer
Dennis & Donna Neameyer
Lisa & Nathan Neameyer
Richard & Susan Neameyer
Roger & Janis Neameyer
Debra Nelson
Nelson Funeral Home
Jacolyn Nelson
Jamy Nelson
Kaye Nelson
Kevin Nelson
Kim Nelson
Larry & Myrna Nelson
Melvin & Cia Nelson
Ralph & Barbara Nelson
Wanda & Steve Nelson
Sue Nelson
Karla Neset
Paul Ness
Network for Good
Chuck & Angie Neubauer
West Cozzens NeVill

New Rockford Foods Inc.
Daniel Newton
Renee Newton
Bill & Kathy Nichols
Scott Nicholson
Brody Nieuwsma
Dale G. Niewoehner
Niewoehner Funeral Home
Nipstad Farms, Inc.
Scott & MaryJane Nipstad
Sandra K. Nipstad
Jason Nitz
Kelly & Kristina Nitz
Scott Nitz
Edwina Njos
Kristyn & Andrew Noel
Carlyle & Gloria Norby
Jason & Audrey Nordmark
Cindy & Dennis Nordquist
Blaine & Paula Nordwall
ND Aviation Association
North Dakota Nurse
Practitioner Association
Northdale Oil, Inc.
Northern Cass Class of 1971
Northern Infidels Motorcycle
Club
Northern Plains Electric
Cooperative
Northern Plains Engineering,
LLC
Northern Plumbing Supply
Northland Electric, Inc.
North Star Community
Credit Union (Maddock)
North Star Community
Credit Union
North Star (Masonic) Lodge #16
NRS Class of 1970
NuVation Health Services, PC
NWC Inc.
Alison Nybo
Dennis Nybo
Alton & Cleo Nygaard
Oasis Petroleum
Jerry Oberholtzer
Debra O'Brien
Dream O'Brien
Renita O'Brien
Cari Obrugewitsch
Richard & Sandy O'Connor
Donna Odegaard
Richard & Diane Odegard
Brandi Oilerman
Drew & Samantha Olafson

L. Dean & Cynthia Olinger
Scott Olin
Jesse & Bobbie Olson
Mary Jo Olson
Ms. Rita Olson
Tammy & Steven Olson
Tim Olson
John Olstad
Marilyn Olstad
Larry & Ann Omdahl
ONEOK Foundation
Deanna & Nathan Opgrand
Dana Opp
Donald & Janene Oppegard
Optometry Clinic, PC
Orthopedic & Sports Physical
Therapy Inc.
Michelle Orton
Judy Orvik
C & R Osowski
Marlys Ostrem
Otto Bremer Trust
Sonnie Otto
Dr. Sharon Otto-Tafelmeyer
Gerry & Karen Oyen
Joseph & Stephanie Paine
Ronald & Sheila Palczewski
Rhonda Paluck
Blaine W. Papenfuss
Paramount Real Estate LLC
Jack & Kristen Paris
William Parker
Zachary & Katrina Parkman
Melissa Parks
Trafton Parr
Rex & Jan Parslow
Wendy & Corey Paryzek
Sharon Pasche
Pathfinder Inspections and
Field Services
William & Marcia Patrie
Bob & Peggy Paul
R. Jay and Lori Paul
Gerald & Cathy Paulson
Jeffrey & Lori Paulson
Marilyn & Richard Paulson
Janel Paupst
Melissa Pausch
Phyllis L. Peiler
Kate & Cory Pelzel
Danielle Pender
Dale Poppel
Rosella Perdaems
Howard & Ila Perhus
Jeanette & Brian Perleberg

Pete & Angela Kritzberger
Jacob Peters
Mary Peters
C. John & Carolyn Peterson
Dr. Margaret Peterson
Marlin W. Peterson
Robert R. Peterson
Robin & Chris Peterson
Russell M. Peterson
Sammantha Peterson
Vicki L Peterson
Gayl Petsinger
Allison & Matthew Pfeiffer
Andrea Pfennig
Nancy Phalen
George & Lucille Phillips
Jace & Angela Picken
Dianne Pierce
Antony Pietrzak
Charles & Beth Pitcher
David & Kari Pittenger
Amber Plambeck
Keith Plummer
Sherry Plummer
Michael Podolak
Fern Pokorny
Polar Communications
LeAnn & Justin Pollman
Daniel and Carla Porter
Todd Porter
Powers Lake Area Development
Praska's Hardware, Inc.
Precision Electric Co. Inc.
Presentation Medical Center
Karen & Dan Preszler
Alan & Marilyn Pringle
Tom & Mary Probst
Pro-Mark Services, Inc.
Greg & Dawn Pruitt
Brent & Toni Ptacek
Perry & Sharon Pulvermacher
Rolf & Sue Purdy
Robert & Anne Pyle
Brent & Mary Qualey
Carroll & Ruth Quam
Elizabeth Quick Berge
Velma Raasakka
Radtke Service LLC
Raffle Ticket Proceeds
Paige Elizabeth Rairdon
Joel & Andrea Rall
Jeffrey & Melissa Ralph
Dr. Gary Ramage
Ramsey National Bank
Andrew Randall

Gary & Susan Rankin
Yvonne Ranschler
Nanette Rapp
Raptor Energy Partners LLC
Jamie & Matthew Rarick
Michael & Shelly Rath
Jason & Renae Rayner
Rays Repair Inc.
Mary E. Rebenitsch
Marsha Reddig
Linda Reddy
Red River Valley & Western
Railroad Company
Pamela Reep
Wayne & Coleen Rehovsky
Christy & Paul Reimer
Betty & Wayne Reinhart
Merril Reinhiller
Joseph & Lori Reinhold
Kenny & Denise Reis
Sarah Reis
Kevin & Lisa Remington
Douglas & Kathryn Rensch
Noel Rensch
Sierra Rensch
Renville County Farmer
Melissa & Travis Rettig
Wayne & Elaine Retzlaff
Kyle Rhodes
Jay & Ashleigh Rice
Randy & Carmen Richards
Richardton Dental Clinic
Marcia Richman
Nancy Rich
Peggy & Orlan Richter
John Rickertsen
Rick Lebahn Agency Inc.
Laurie and Kurt Ridl
Jeff & Kristi Riedesel
Renee Riedesel
Patricia Riely
Mandy & Shaun Rink
Edward & Angela Rintamaki
Michael & Helen Ann Risan
R Kilen Consulting, LLC
RLND Alumni Assoc
Robert J. Eynon Agency Inc.
James & Ina Robertson
Stephen Roberts
Jim W. & Cyndy J. Robinson
Rock Inn
Rocky Road Landscaping LLC
Colleen Rodakowski
Rodenbiker Industrial, Inc./
UL Prairie Greenhouse

Tom & Jean Rodine
Lisa Roers
Rich Rogers
Gail Rogne
Rolla Dairy Queen
Rolla Drug
Rolla Implement
Randy & Rita Romanoski
Jack Rosenau
Rossco Crane & Rigging, Inc.
Renee Rossow
Lillian G. Rost
John & Junell Roswick
Rotary Club: Dickinson
Rotary Club of Bismarck
Rotary Club of Wahpeton
Mildred Rothgarn
Carlene Rothschiller
Roughrider Feeds
Kitri Rowland
Beverly Roy
RTC Networks
Bob & Shanna Rude
Rugby Broadcasters, Inc.
KZZJ
Rugby Car Club
Rugby Dental Office PC
Rugby Farmers Elevator Co.
Rugby Hardware, Inc.
Rugby Insurance Agency LLC
Rugby Lumber Inc.
Rugby Veterinary Service, PC
Becky & Jay Ruggles
Dorene Rurup
Rebecca Rush-Johnston
Carol M. Russell
Ryans Bar Inc.
Greg Ryberg
Tamra & Roger Sackman
Scott & Heather Sahli
Emily Sakariassen
John & Amy Sakariassen
John R. Sakariassen
Deborah Salzer
Joan P. Samuelson
Karen Sanchez
Ervin & Bertha Sand
Sand Steel Building Co.
Dale V. Sandstrom
Sanford Health
Steven & Sarah Sarbacker
Debra & Terry Sarsland
John & Lori Satrom
Maynard Satrom
Michael & Nancy Satrom

Fred & Kristy Sauby
Jerry Saude
Jeff & Debbie Sauer
Geniene & Bradley Sauvageau
SAV Transportation
Vineet Saxena
Morris & JoAnn Saxerud
Sax Motors
Susan Sayer
Joel Schaaf
Mark & Susan Schaan
Matthew Schaefer
Carla Schaeffer
Irene Schafer
Lorna Schafer
Curt Schaff
Derek & Lauren Schaff
Schale Family Farms
Karla Schank
Stephanie Schendel
Cheryl & Alan Scherr
Kyle & Karra Scherweit
Schettler Family
Kenneth & Kristi Schiele
Sharon L. Schiermeister
Julie Schirado
Susan Schlecht
Wilbur Schlecht
Katie Schlosser
Sharon C. Schluchter
Blaine & Susan Schmaltz
Mary Jane Schmaltz
Darren Schmidt
Rev. Peter & Vicki Schmidt
Tamie Schmidt
Bill & Tara Schmitz
Schmitz, Inc.
Andrew Schneider
Heidi Schneider
Michael J. and Kathleen
Schneider
Sheyenne Schneider
Judi Schnell
Linda Schnell
Joy Schoch
Steven & Miriam Schoenig
Charles & Kathleen Schorsch
Dan & Jane Schreck
Cynthia Schreiber-Beck
Kailey R. Schreiner
Tom & Char Schuler
Becki & Lucas Schumacher
Schumacher Inc.
Karen & John Schumacher
Susan Schumacher

Schwandt Goodman Post
9050
Angela K. Schwartz
Daniel Schwartz
Darlene Schwartz
Kimberly Schwartz
Randal and Kristi Schwartz
Molly Schwartz
Will & Lois Schwarz
Tricia Schwede
Todd A. & Deb Schweitzer
Greta Schweitzer
Carlyle Scott
John & Pat Sebastian
Patricia Sebastian
Philip & Jean Sedo
Dr. Hubert Seiler
Bruce & Brenda Selinger
Jordan & Kayla Selinger
SEP FBO Richard Kannenberg
Shaun Seymour
Robert & Jane Shea
Agnes A. Sherlock
Shetler Construction LLC
Thomas & Julie Shorma
Alyssa Short
David Shultz
Bryce Shypkoski
Lorie & Tom Sieg
Pat & Frank Sieg
Howard & Darlene Siewert
Mary Ann Sigurdson
Joshua & Sara Simmers
Aaron Simonson
James & Vivian Simpson
Gene & Marilyn Sipe
Monte & Ellen Sipma
Stan & Marilyn Sirek
Lee Skaarvold
Ms. Cill Skabo
Robert & Jo Ann Skabo
David & Arlyss Skari
Erick & Trudi Skedsvold
Todd Slaamot
Geno Sloan
Smellie Family Fund of
Fidelity Charitable
Greg & Jane Smestad
Cory & Cassie Smith
Gary Smith
Jack Smith
Justin and Angela Smith
Kevin & Kathy Smith
Smith Motors, Inc.
Grace Sneed

Jan Snortland
Bergit Sobak
Suzanne Sobolik
So Chill, LLC
Richard H. Solberg
Sutin & Sally Sorawat
Ron & Sharon Sorensen
Douglass & Sharon Sorenson
Lila & Butch Sorenson
Ryan & Lindsey Sorenson
Marie Sorenson
Robert Sorenson
Stacy Sorenson
Boyd Southam
Gary & Judy Spangelo
Spectrum Aeromed
Diane Speer
Anna Mae Spiekermeier
Spool-Tech
Springan's Inc. Att: Steve
Springan
SSi Lift USA, LTD
Stabil Drill
Margaret Stadum
Stallion Oilfield Services, Ltd.
Julie Stanislaus
Candace Stanton
Starion Bank
Staritch Foundation, Inc.
StarWell Services, Inc.
Margret Staskivige
Helen Steckler
Kristina Steckler
Emily Steele
Karrine Steenblock
Clarence & Mary Steffen
Delano & Kathryn Stein
Vicky Steiner
Jeff & Andrea Stein
Michael Steinke
Susan Steinke
Peggy Stern
Steve & Eileen Scheel
Charitable Fund
Ms. Linda Steve
Gregory Stevens
Marlys Stevenson
Terri Stevenson
Theone Stevenson
Raymond Stewart
Lisa & Brian Stgermaine
St. John Evangelical Lutheran
Church
St. Michel Furniture
Blaine Stockert

Carol Stolt
James Stolt
Christi Stonecipher
Janelle Stoneking
Laura & Michael Stone
Stone Mill, LLC
Chad Storbakken
Sandi Storbakken
Storm Insurance Agency LLC
Duane Stotz
Galen Strand
Fred and Wanda Strege
Strobeck Lindseth Farm LLP
Chris & Laurie Strommen
Dale & Amy Stromsodt
Michael & Holly Stromsodt
St. Thomas School District #43
James & Ellen Sturdevant
William Tucker Sturdevant
Michelle Such
Wendy Sullivan
Summit ESP a Halliburton
Service
Sunbelt Rentals
Robert & Linda Sundberg
C.C. & R.R. Swanson
Elaine Swenson
Fern Swenson
Kerry & Linda Swindler
Cindy Switzer-Henschel
Tallgrass Water North Dakota
Cindy Taylor
Jim and Rita Teigen
Joyce & Charles Teigen
Virginia Templeton
Tenaris
Tenaris Sucker Rods
Wanda & Bruce Terpening
Gloria Terry
Michael & Carla Teske
Lila Teunissen
Kellee & Travis Thacker
The Dennis Meyer Family
Cedric & Mary Theel
The Funders Network
The Furniture Connection
The John Roger Njaa &
Nancy Marie Njaa
Revocable Living Trust
The Real Estate Company
The Sweet Melange LLC
Glenna & Marvin Tuomala,
Trustees
Larry & Sandy Thiele
Andrea Thimjon

Diane & Alex Thomas
Theodore & Ada Thompson
Beverly Thompson
Deborah Lou Thompson
Jackie Thompson
Jeffrey Thompson
John & Sandra Thompson
Juliann C. Thompson
Thompson-Larson Funeral
Home
Thompson Men's Club
Suzanne Thompson
Theodore Thompson
Richard Thoreson & Kelly
Steffes
Rebecca Thorpe
Cory Thrall
ThruTubing Solutions
Tom & Tammi Thurlow
Denise Tibbs
Avis E. Tilden
Tim Dwyer Farm Trust
Timec Oil Field Services
Lisa Timmerman
Bradley & Julie Timpe
Karensa Tischer
Travis Tischer
Titan Machinery
Lane & Jennifer Titus
Lee & LaShell Tjelde
Miriam Tobola
Judy & Gordon Tofte
Denise & Dwayne Tollefson
Lynn Tomlinson
Sharon Toop
Tooz Construction Inc.
Kathie Tooz
Nichole Tooz
Janet & Jeff Topp
TorcSill Foundations
Dyan V. Torgerson
Carl & Mary Torola
Julie Lynne Torres
Total Depth Well Services
Inc.
Town & Country Credit
Union
Lori L. Trangsrud
Travis Lee Agency, LLC
Daniel & Patricia Traynor
Keith & Paulette Trego
Triumph Inc.
Trotter Construction Inc.
Curt & Lesley Trulson
TSR Parts, Inc.

James & Gerd Tuchscherer
Jerry & Susan Tuchscherer
Brian & Laurie Tuite
Lowell & Loie Tupa
Michael & Heather Tupa
Elaine Turek
Bradley & Francine Turner
Daniel & Christine Turner
Jean Turner
Dr. William & Heide Turner
Turtle Mountain
Communication, Inc.
Turtle Mountain Star
Diane Tveten
Jack & Susan Uhas
Kay Ulland
Tom & Sandy Ulmer
UnapologeticallyProLife
UND RIAS
Unison
United Community Bank of
ND - Drake
United Community Baptist
Church
United Tribes Technical
College
United Valley Bank
United Way - Dickinson
United Way of Otter Tail &
Wadena Counties
Joe & Sandy Urlaub
US Durum Growers Assoc
Robert & Stacy Ust
Joy .I Vaagene
Fred & Kristi Vadnie
Valley City Veterinary
Hospital, PC
Blaine & Debra Van Berkom
Kyla Van Den Hemel
Aaron B. Vander Vorst
Gene & Mary Van Eeckhout
VanRay Farms
Virginia Vaplon Goerger
Corene Vaughn
Charles & Lisa Vein
Arlin Veitz
Judy Veitz
Nathan Allan Veitz
Verendrye Electric
Cooperative, Inc.
Jennifer & Peter Verke
Tom Vertin
Vet's Club, Inc. (Larimore)
Daniel & Carmen Veum
Eric & Janessa Viall

Victory Diesel LLC
Reuben Viland
Robert Vivatson
Betty Vliem
Lori Vogeler
Sarah M. Vogel
Matthew Voigt
Bruce & Anne Vold
J. David & Elaine Vold
Rev. Harold Vold
Matthew & Amy Volk
Daniel & Leann Vollmer
Kenneth Voltz
Vance Vosberg
James & Pam Vukelic
Barbara Wahl
Cameron & Lacy Wahlstrom
Wahpeton Ace Hardware
Wahpeton Drug Company Inc.
Wahpeton Public School
District
Pamela & Russell Walcker
Mike & Susan Waldoch
Jenna Waldock
Tom & Joyce Waldock
Walhalla Bean Co.
Samantha Walker
Betty Wall
Brenda Wall
Janis & Brent Wallender
Dolores Walls
Dale Wamstad
Don Wamstad
Nicki Wamstad
Nicole Wandler
David & Diane Wanner
Juli Wanner
Kayleen Wardner
Lisa Warffeli
Jacob Warren & Sarah Smith
Warren
Jonathan & Amy Warrey
Washburn Ambulance Service
Aric Washburn
Reed Washburn
Daryl & Noel Watson
James & Lori Way
WCCO Belting Inc.
Barbara Weaver
John Weaver
Weber Insurance Agency, Inc.
Kali Weber
Mark F. & Jadene Weber
Rhonda & Russ Weber
Shane & Kayla Weber

Lynne Webster
Robert & Susan Wefald
Joetta & Frank Weible
Robert Wm. & Jodi Lee Weigel
Kenneth W & Kimberly J.
Weisenberger
Allan & Gail Weisenburger
Reed & Jenna Weisenburger
Steve & Sharon Weisenburger
Daniel Weisz
Kenneth & Susi Weisz
Tobin & Cheryl Welch
Charlie Wellman
WellPro, Inc.
Wesley & Patricia Well
Carol J. Weninger
Rose & Joe Weninger
Kyle Wentz
John & Linda Westbee
West Central Initiative
Luke & Casey Weston
West Plains Inc.: Beach
West River Veterinary Clinic
Larry Westrum
Kathy M. Wetzell
Joy Wezelman
Mary Whalen
Beth Wharam
Cory White
Reggie & Catherine White
William & Anna Marie
Whitmore
Wick Communications
Harold & Lorra Wick
Daniel Wiedrich
Florence E. Wiest
Wildflower Boutique LLC
Jolene Wilhelmi
Mark & Leritta Wilhelmi
Ryan & Beth Wilhelmi
Terri & Mark Wilhelm
Terry & LaWanna Wilhelm
Larry & Ruby Wilke
Duane Wilkie
Sandy & Tom Wilkie
Connie Jo Williams
Gail Williams
Janet Williams
Robert & Judith Wilmot
Wiltse Reunion & Silent
Auction
Brent Winkelman
DeLette Winkelman
Winn Construction, Inc.
Laurie Winther

Wishek Drug
Brett & Amanda Wisness
Withuski & Sabbe Dental
Ellen Witteman
Thomas Witteman
Shannay and Keith Witte
WM. C. Blair Post No. 144,
American Legion Trust
Fund
Doug & Jolinda Woehl
Richard H. Wohl
Ardyce & Brian Woinarowicz
Cordell Wold
Dawn Wolf
Emily Wolf
Julie & Robert Wolff
Patti Wolff
Scott & Kerri Wolff
Dale & Barbara Wolfgram

Jordan & Julie Wolf
Cynthia Wolla
Nikki Wolla
Brent J. Woodworth
Roger & Kay Worner
Brandon Jack Wyman
Allen Yaggie & Alisa Mitskog
Geraldine Yaggie
Jeff & Janet Yaggie
Mark and Katie Yahna
Mary Yamada
Chris & Sparkle Yeargan
James L. Young
Donald & Vicky Ystaas
YUM
Carol & Bradley Zacher
Clayton & Cyndy Zacher
Merle & Eileen Zander
Bill Zarak

Missy & Mark Zarak
Thomas Zarak
Duane & Karen Zent
Dennis & Gae Zentner
Louise Zerface
Dave & Tracie Zetocha
John & Ann Zetocha
Tara Zettel
Harold & Bonnie Ziegler
Sherryl Ziemann
Diana Zietz
Eileen & James Zimmerman
Jeanne Zimmerman
Zimmerman Law PC
Mark Zimmerman
Melody Zimmerman
Douglas Zinke
Carrie Zubke

Memorials and Tributes

These people were remembered by loved ones and friends through a gift to the North Dakota Community Foundation. We are honored to present their names as a tribute to their lives. May their memories remain strong in our hearts.

Adam Bierschenk
Allan & Gail Weisenburger
Allen Ryberg
Andrew Anderson
Andrew Huus
Andy Ludwig
Anne & Lee Hogan, Gladys &
Dean Brosseau
Anton Kuntz
Arline Lish
Arne Nystuen
Arnold & Margaret Hoselton;
Clarence Scharmer; Vernon
Larson; Phyllis Rolette
Art Conklin, Oakes ND
Arvid Knutson
Barb Larson
Bear
Ben Miller
Ben Sullivan
Benjamyn Miller
Bert Olson
Betty Jane Gustafson

Bev Bonn
Bob Johnson
Bobby Erickson
Boyd Xavier Warren
Butch Cox
Butch Konschak
Buzz & Betty Glaesemann
Calla Rarick, David &
Merrilee Klemisch, Bud,
Dorothy, & Ginny Lubka
Carol Monson
Cecelia Landowski, Tom
Landowski, Jay & Leatrice
Spilde
Charles Lindell
Cheryl McCaskey
Chris Vernon
Christ Heintz
Christel & Richard Johnson
Christie Urbach
Cindy Miller
Clarence Sharmer; Arnold &
Margaret Hoselton

Clark Cronquist Jr.
Daniel Ray Marks
Darlene Zarak
Darold Hitland
Darrell & Lorine Knudson
Dave Engstrom MD
David & Barbara Dahlen
David Ley
Deborah Novak
Deborah Zikmund
Delmer Ostrem
Dennis Babcock, Leona
(Zdeb) Hendrickson, Terry
Anderson, Marilyn Nelson,
Christy Urbach, Rose
Olson, Katherine Kielb
Dennis Christianson
Dennis Christianson &
Charles Hagen
Diane Stavens
Dianne Rasmussen
Don Overbo
Don Rustad

Don Savage
 Donald Hoffman
 Donna Anfinson
 Dora Diepolder
 Doug Mongoen
 Dr. Anne Scully
 Dr. Bart Fischer
 Dr. Dale A. Henning
 Dr. Ivan Berg
 Drew David Madler
 Duane Schenstad
 Ed Beneda
 Edith Drevecky
 Edmund Hager
 Edna Torske
 Eldo Johnson
 Elizabeth Gallanis
 Erma Mickelson
 Esther Shuldheisz
 Ethel Olson
 Eugene, Ray, Ruby, Warren,
 Hanna, & Wayne Hoselton;
 Elmer & Vivian Bateman;
 Al Martinez
 Evelyn Curtiss
 Evelyn, Ida, & Marjorie
 Rasmussen
 Frank & Christina Doll;
 Joseph & Rosemary Doll;
 Alexander & Magdalen
 Doll; The Doll Baby
 Frank R Staskivige, Kurt
 & Elisabeth Harold,
 Helen & Chad Kirkeby, Bob
 Steenerson
 Friends
 Friends Current & Past
 Fritz Huschka
 Gary Ingwaldson
 Genevieve Beck
 George & Gladys Daniels
 Gerry Wilkie
 Grace Olien
 Greg Johnson
 Greta Rasmussen
 Hank & Joy Bakken
 Harlan Vining
 Harriet Cronquist
 Harris & Pat Anderson; Joan,
 Sharree, & Lee Schumacher
 Harvey, Edwin, & Signe
 Anderson; Arthur & Agnes
 Jensen
 Helen Goetz
 Hilary, Vernetta, Gerald, &

Geraldine Ebertowski &
 Glen Christenson
 Homer Wennerstrom
 Ina & Irene Skaar
 Inez Knoop
 James Jorgenson
 James Langseth
 James R, James T, & Darrell
 W Boulduc
 Jane Zidon
 Janet Dusterhoft
 Janies Halden
 Jason Two Crow
 Jean Bass-Aune
 Jeanette Clemens
 Jerry Blessum
 Jerry McCormick
 Jim Halden
 Jim Tveter
 Jim Witt, father &
 grandfather of Margo &
 Ron Kunz family
 Joan Anderson
 Joel Midgarden
 John Bice
 John Duchscher
 John E. Conneran
 John Grubb
 Joseph & Vernie Paulson;
 Ernest & Doris Swanberg
 Joseph Charles Schmidt
 Joseph Holm
 Joyce Iverson
 Joyce Toews
 JP Robbins and Seth Hinger
 Judy Sorenson
 Karen Larson
 Kathryn Stewart
 Kathy Markel
 Katie Kunz
 Keith Flaten
 Kelly Dakken
 Kelly Jean Tufte Carter
 Ken & Louise Haugen
 Kenneth Olson
 Kevin Woinarowicz, Kim
 Woinarowicz, Aaron Perry
 Kip McCoy
 Kirkeby Family Members;
 Donald & Doris Holler
 Kirstin Skari
 Lance Michael Rayner
 Larry Fjellanger
 Larry Sorenson
 Larry Vaagene

Larry W. Thompson
 LaVern Zimmerman,
 Nicholas Stoebner
 Lee Montgomery
 Leo, Marcus, & John Stellan;
 Allen Dale & Rosanna
 Duncklee
 Leonard Wolfgram
 LeRoy Brenna
 Lester Kunz
 Lisa Johnson
 Lloyd & Adeline Papenfuss
 Louis & Gertrude Staloch,
 Lester & Helen Aasand,
 Eugene Staloch
 Louis D Kadlec
 Luella Vendell
 Lyle Bill
 Lynn Jacobsen & Pam Eberle
 Mandred Bymoan
 Many Bjorgan Family
 Members, Ray & Minnie
 Boll, Allison Moline, Jake
 Schumitz
 Marian Hohbein
 Marian Rasmussen
 Marian Rasmussen and
 Richard Pederson
 Marjane Klundt
 Marlene Larson
 Marlys Olson
 Marty Lucht
 Marvin & Susan Mosolf
 Mary Cotton Marshall
 Mary Kay Feist
 Mary Lou Stewart, Hobart Bo
 Buchanan, Robert Stewart
 Mary Marshall
 Mary Smith RN MS
 Matthew Jensen
 Melvin Stutrud
 Merry Ketterling
 Mike Waechter
 Minnie Amann, Thomas G
 Wambach, Harold Erickson
 My loving parents Elva and
 John Held
 Neal Simley
 Nicholas Andrew Johnson
 Norvel & Milo Dybedahl
 Olaf Malmgren
 Our Dear Lodge Members
 who passed away in 2019-
 2020
 Owyn Jay Fuglie

Pam Eberle
 Paul D Hougen / Marlene
 Larson
 Pearl Welder
 Phyllis Berg
 Randy Berndt
 Ray Hager
 Raymond Bessette
 Raymond Buckmier
 Rebecca Utke
 Reidar Sandvold
 Rev. Norman E. Winkelman
 Rhoda Westervall
 Richard Holand
 Richard Pederson
 Rick Rasmusson
 Robert "Bob" Schindler
 Robert Graber
 Robert M Bob Haines
 Rodney Berg

Rodney Nelson
 Roger & Darline Bourn
 Roger Mattson
 Ron Jordan
 Ron Nelson
 Ronald Olson
 Rosina Schmidt
 Ruth Rostberg
 Sandy Leum
 Scott Allen Wolff
 Selma Johnson
 Shirley Ledahl
 Shirley Trosen
 Stanley Deile
 Stanley Whicker
 Stephen Allan
 Steven Dockter
 Susan Mattern
 Sylvester & Isabel
 Tuchscherer

Terri Leddige
 Theodora Klemetson
 Thomas McKay
 Thomas McMahan
 Tim Dwyer of Alexander, ND
 Tony Greff
 Tonya Gustafson Miller
 Trish Furr
 Trish Waldock
 Verlin L Fossum
 Vicky Sloan
 Wallace Slaamod
 Wally Slaamod
 Walter Schmaltz
 Warren DeKrey & Jack Traynor
 Wayne Jensen
 Willard Frovarp
 Willis Busse

In Honor Of:

All Former Mayors of the City of Rolla
 Ann Erickson
 Anna Rairdon
 Beckett Carlson
 Bernice Carlson
 Brent Winkelman
 Bruce Vold
 Cam & Danielle Mickelson
 Dennis Meyer
 Don & Lorraine Sussex
 Grenora Class 1973
 Grenora Class of 1979
 Herbert Bendixson
 James Michael Schmidt
 John & Lindsey Christianson
 John Doerner, Class of 1950
 Joseph Lies Family
 Joy Wezelman

Karen Hall
 Kerry Hartman
 Kirk Ham
 Kristin Jaeger
 Lisbon Public Schools Teachers
 Malmberg Family
 Marilyn Cross Hudson
 Marty & Janel Schmaltz
 Mary Jane Schmaltz
 Mott-Regent Class 1971
 NRS Class of 1970
 Ray Haeger, Tom Schulz, Gary Millett, Schulz,
 Rodney Jaeger
 Sharon Bendixson
 Tim Mathern
 Wahpeton HS Class of 1966
 Walsh County Agricultural School Class
 of 1970



We are here to help!

If you have any questions about charitable giving in North Dakota, the 40% State Tax Credit, or starting a fund at NDCF, please give us a call. There is no obligation and we are happy to help you.

More information can also be found on our website at www.NDCF.net.



Our Staff



Kevin J. Dvorak, CFP®
President & CEO
701-222-8349
Kevin@NDCF.net



Christi Stonecipher
Director of Communications
701-222-8349
Christi@NDCF.net



Jeff Wanek
Accountant
701-222-8349
Jeff@NDCF.net



Deb Clark
Office Manager
701-222-8349
Deb@NDCF.net



John Heinen, CFRE
Development Director
West



Kara Geiger, CFRE
Development Director
Central

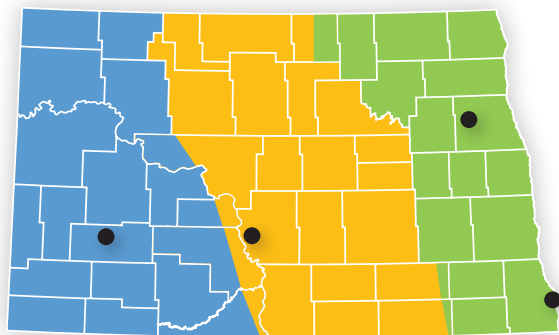


Amy Stromsodt, CFRE
Development Director
East



Jana Berndt
Development Director
Richland-Wilkin CF

Western ND Office
PO Box 1505
Dickinson, ND 58602-1505
701-590-4614 (cell)
John@NDCF.net



Central ND Office
711 Riverwood Dr.
PO Box 387
Bismarck, ND 58502-0387
701-222-8349 (office)
Kara@NDCF.net

Eastern ND Office
PO Box 735
Larimore ND 58251
701-741-3193 (cell)
Amy@NDCF.net

Wahpeton, ND Office
PO Box 905
Wahpeton, ND 58075
701-640-2058 (cell)
Jana@NDCF.net

Leave Your Legacy in North Dakota

– with a gift through your will or trust –

Making a lasting difference in your community or for future generations may be easier than you realize. With very simple language in your will or trust, you can support the North Dakota Community Foundation (NDCF) to carry out important work based on your philanthropic priorities.

Gifts to NDCF provide the added value of supporting your interests far into the future. Gifts are carefully invested to generate a permanent source of income for the scholarship, community, or nonprofit organization they were intended to support.

If you have children or other relatives, you can leave a portion of your estate to them and a percentage to NDCF. Doing so provides for your heirs while honoring your charitable values.

GETTING STARTED

Contact your professional advisors (financial planner, attorney and/or accountant) and ask for help in establishing a charitable gift.

Make sure your will or living trust is up-to-date and reflects your charitable goals. Let the recipient of your gift know that you plan to support them. They will appreciate your generosity and will want to know exactly what you'd like them to do with your eventual gift.

LANGUAGE FOR YOUR WILL OR LIVING TRUST

If you would like to include the North Dakota Community Foundation in your will, here is some sample language to consider:

“I give and bequeath to the North Dakota Community Foundation (Tax ID Number 45-0336015), a qualified charitable organization under IRS 501(c)(3), located in Bismarck, North Dakota, _____ (a percentage of the estate, specific dollar amount, or remainder of estate) to the _____ (name of fund(s) at NDCF), a permanent component of the North Dakota Community Foundation.”

** Be sure to contact your legal advisor.*



Brothers Russell and Dale Brown left gifts to the communities of Lisbon and Milnor in their estate plans.

OTHER DEFERRED GIFTS

There are other ways to leave a legacy in North Dakota if you would like to make an impact: Make NDCF the beneficiary (or partial beneficiary) of your:

- Life insurance policy
- IRA
- 401K
- Commercial annuity

Establish a Charitable Gift Annuity with the North Dakota Community Foundation. You will receive a payment every year for your life (and your spouse, if desired). A substantial portion of the payment may be tax free. NDCF will receive the remainder in the annuity for the specific fund(s) you would like to benefit when the annuity matures.

Real Gifts from Real North Dakotans

Tom Larson was the City Manager, Assessor, and Auditor for Park River, ND and a tremendous community leader. When he passed away at the age of 54, he left a gift of almost \$120,000 to the Park River Community Endowment Fund to continue its good work long into the future. It is the largest one-time gift in the fund's over 30-year history and was a surprise to local volunteers.



T. A. and Anna Solheim lived in Minot for most of their lives. Ted had several casual conversations with NDCF staff over the years about different ways to structure his estate. He then made final decisions with his attorney. The Solheims left 50% of their estate to their heirs and certain percentages of their estate to various nonprofit organizations, including 15% to NDCF to benefit the Minot area. Their fund continues to make grants every year to projects and programs in Minot, over 10 years after the Solheims passed away.



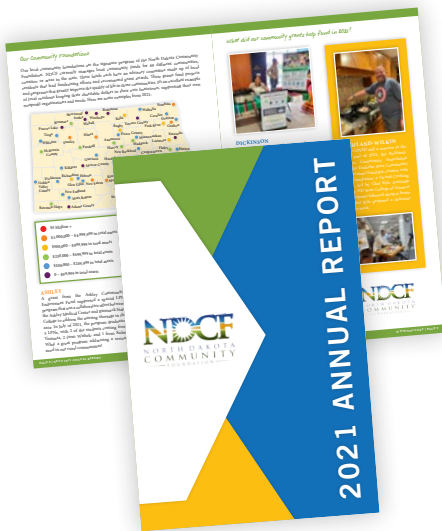
Susanne Mattheis's attorney had contacted NDCF with some questions about how to accomplish Susanne's charitable goals, since there were several different organizations she wished to support. Susanne eventually established a Special Purpose Fund at NDCF with a gift in her will. The money was placed in a permanently endowed fund and per her direction, seven different organizations receive a portion of the earnings every year, including the Bismarck Mandan Symphony Orchestra, the Bismarck Public Library, and the University of Mary. These annual grants to her favorite charities will continue forever.



If you would like more information about these or other planned giving options, visit www.NDCF.net/Plan or feel free to contact us at 701-222-8349 or via email at info@NDCF.net. We will connect you with a Development Director in your area who will be happy to learn more about your charitable interests and share ideas on how to best accomplish your goals. Conversations are free, confidential, and you are under no obligation to make a gift. We exist to help you help others.

Former NDCF Board Members

Evan Lips <i>Bismarck</i>	Jim Davis <i>Bismarck</i>	Robert Schuller <i>Bismarck</i>	H. Michael Hardy <i>Fargo</i>
M. Rosalie Lier <i>Fargo</i>	Wayne Leiner <i>Fargo</i>	Ray Hoffman <i>Bismarck</i>	Jim T. Weisser <i>Linton</i>
Donald Schmid <i>Bismarck</i>	Karnes Johnson <i>Sentinel Butte</i>	William Kretschmar <i>Venturia</i>	Patsy Thompson <i>Bismarck</i>
Stanley M. Moore <i>Jamestown</i>	Theodore Kessel, Sr. <i>LaMoure</i>	Rollie Morud <i>Dickinson</i>	Marie Arnold <i>Dickinson</i>
Richard Crockett <i>Fargo</i>	Daniel Lessard <i>Grafton</i>	Jacque Schauer <i>Sterling</i>	Rob Gayton <i>Bismarck</i>
John Hove <i>Fargo</i>	David M. Gipp <i>Bismarck</i>	Rita Staloch <i>Minnewaukan</i>	Anne Riske <i>Fargo</i>
Ruth Everson <i>Bismarck</i>	Jan Berg <i>Jamestown</i>	Irma Dulmage <i>Leeds</i>	Jennifer Rasch <i>New England</i>
Richard T. Carley <i>Casselton</i>	Sarah Andrews Herman <i>Fargo</i>	Joanne H. Ottmar <i>Jamestown</i>	Donald Oppegard <i>Park River</i>
Arden Burbidge <i>Park River</i>	Mrs. Jo Jacobson <i>Alamo</i>	Agnes Palanuk <i>Dickinson</i>	Diane Peyerel <i>Rural Penn</i>
J. Gerald Nilles <i>Fargo</i>	Monty Burke, Sr. <i>McKenzie</i>	George Cox <i>Grand Forks</i>	Aaron Schmit <i>Williston</i>
T. A. Solheim <i>Minot</i>	Mark J. Butz <i>Rugby</i>	Mary Kay Olson <i>Langdon</i>	Steve Ottmar <i>Jamestown</i>
Marijo Shide <i>Larimore</i>	Vernon E. Wagner <i>Bismarck</i>	Frank Keogh <i>Williston</i>	John Botsford <i>Grand Forks</i>
Richard McGee <i>Minot</i>	Francis Forster <i>Richardton</i>	Orlin Backes <i>Minot</i>	Becky Thatcher-Keller <i>Cooperstown</i>
Peter Nielsen <i>Grand Forks</i>	Keith Bjerke <i>Northwood</i>	Tara Holt <i>Bismarck</i>	Christie Obenauer <i>Hazen</i>
Dr. E. J. Hagan <i>Williston</i>	Gerald J. Nilles <i>Fargo</i>	Bill Marcil, Jr. <i>Fargo</i>	LouAnn Waliser <i>Lisbon</i>
Justice Vernon Pederson <i>Bismarck</i>	Ray Hoffman <i>Bismarck</i>	Linda Steve <i>Dickinson</i>	Douglass Prchal <i>Bismarck</i>
Brooks Keogh <i>Keene</i>	John Pierson <i>Bismarck</i>	Warren Robinson <i>Bismarck</i>	Dawn Mandt <i>Grafton</i>
William L. Guy <i>Bismarck</i>	Theodore Kessel <i>LaMoure</i>	David "White Thunder" Trottier <i>Dunseith</i>	Diane Baumbach <i>Emerado</i>
T. A. Roney <i>Carrington</i>	Howard Schmid <i>Oberon</i>	Lowell Overbo <i>Ashley</i>	Sheila Palzcewski <i>Bowman</i>
Carol Jacobson <i>Alamo</i>	Dean Lenaburg <i>Valley City</i>	Chad Peterson <i>Fargo</i>	Scott Swenson <i>Watford City</i>
B. P. McDermott <i>Grand Forks</i>	Marlys Prince <i>Regent</i>	Dennis Johnson <i>Watford City</i>	Nancy Johnson <i>Fargo</i>
Dr. Dean Strinden <i>Williston</i>	Taylor Barnes <i>Jamestown</i>	Lynn Nelson <i>LaMoure</i>	Wayne Hauge <i>Ray</i>
Wade Arnegard <i>Dickinson</i>	Frank P. Keogh <i>Williston</i>	Joe Hauer <i>Bismarck</i>	Carla Peltier <i>Belcourt</i>
Gloria Legrid <i>Jamestown</i>	Duaine Espégard <i>Minot</i>	Barbara Mayer <i>Regent</i>	Spencer Larson <i>Linton</i>
Dale Anderson <i>Fargo</i>	Russell Stegman <i>Cavalier</i>	Dan Liberda <i>Carrington</i>	Georgia Artz <i>Bottineau</i>
Warren DeKrey <i>Bismarck</i>	Carol Hjelmstad <i>Reynolds</i>	Rosemarie Myrdal <i>Edinburg</i>	Michael Killoran <i>Casselton</i>
Arnold L. Braaten <i>Minot</i>	Cornelius Grant <i>Bismarck</i>	Neil Fedje <i>Cavalier</i>	



You are receiving this report because you either...

1. Have supported one of NDCF's component funds in the past.
 2. You are a pretty important person & we thought you'd want to know this stuff.
- or
3. Both!

Thank you!

Help us keep our mailing list current!

- Is your address incorrect?
- Are you receiving duplicate copies of this report?
- Would you like to be removed from our mailing list, or would you like to add someone?

Let us know:

✉ Email us at info@NDCF.net

☎ Call 701-222-8349

✉ Or Write to

North Dakota Community Foundation
PO Box 387
Bismarck, ND 58502-0387