

2019 ANNUAL REPORT



NORTH DAKOTA
COMMUNITY
FOUNDATION

WE MAKE IT POSSIBLE FOR OUR SMALLER DONORS TO BE AS EFFECTIVE AS OUR LARGER DONORS BY POOLING FUNDS FOR THE COMMUNITIES. WE GIVE LOCAL PEOPLE THE TOOLS AND POWER TO IMPROVE THEIR COMMUNITIES BY BUILDING ENDOWMENT AND MAKING GRANTS THAT ADDRESS THEIR COMMUNITY'S CHANGING NEEDS. THE FOUNDATION IS FIERCELY APOLITICAL - IF SOMEONE IS DOING SOMETHING GOOD FOR NORTH DAKOTA, WE ARE HAPPY TO FACILITATE IT IN WHATEVER WAY WE CAN, NO MATTER THEIR POLITICAL AFFILIATION. WE BELIEVE THAT TRUE LASTING CHANGE IS MADE ON THE MICRO LEVEL, NOT WITH SWEEPING ONE-SIZE-FITS-ALL PROGRAMS. BOTTOM UP IS BETTER THAN TOP DOWN. WE ARE THE PEOPLE OF NORTH DAKOTA'S FOUNDATION. NDCF BOARD MEMBERS REPRESENT THE PEOPLE OF NORTH DAKOTA AND ARE VOLUNTEERS IN EVERY SENSE OF THE WORD. WE BELIEVE THAT FACE-TO-FACE IS THE BEST WAY TO CONNECT WITH PEOPLE. IT'S ABOUT TODAY, BUT MOSTLY IT'S ABOUT THE FUTURE OF ALL OF NORTH DAKOTA. IF WE PARTNER WITH YOUR COMMUNITY, WE WILL COME TO YOUR COMMUNITY AND COME BACK AGAIN. WE ARE WITH YOU FOR THE LONG-TERM, NOT JUST TODAY. OUTSIDE "EXPERTS" DON'T BRING AS MUCH TO THE TABLE AS THOSE ON THE GROUND WHO ACTUALLY DO THE WORK. OUR STRUCTURE MAKES FOR ACCOUNTABILITY AND TRANSPARENCY. WE WERE THE FIRST COMMUNITY FOUNDATION IN NORTH DAKOTA TO MEET THE NATIONAL STANDARDS FOR COMMUNITY FOUNDATIONS AS SET BY THE COUNCIL ON FOUNDATIONS.

VALUES

WE GIVE LOCAL PEOPLE THE TOOLS AND POWER TO IMPROVE THEIR COMMUNITIES BY BUILDING ENDOWMENT AND MAKING GRANTS THAT ADDRESS THEIR COMMUNITY'S CHANGING NEEDS. WE BELIEVE THAT TRUE LASTING CHANGE IS MADE ON THE MICRO LEVEL, NOT WITH SWEEPING ONE-SIZE-FITS-ALL PROGRAMS. WE ARE THE PEOPLE OF NORTH DAKOTA'S FOUNDATION. WE BELIEVE THAT FACE-TO-FACE IS THE BEST WAY TO CONNECT WITH PEOPLE. WE ARE WITH YOU FOR THE LONG-TERM, NOT JUST TODAY. OUR STRUCTURE MAKES FOR ACCOUNTABILITY AND TRANSPARENCY.

VALUES

Mission Statement

The mission of the North Dakota Community Foundation is to improve the quality of life for North Dakota's citizens through charitable giving and promoting philanthropy.

About the North Dakota Community Foundation

The North Dakota Community Foundation was incorporated in 1976. NDCF is an IRS designated 501(c)(3) statewide, public, nonprofit, tax-exempt corporation that receives and distributes charitable funds to support a wide range of programs that benefit North Dakotans.

NDCF was formed by a group of concerned citizens who were looking for a general charitable vehicle to build endowment to support the nonprofit sector in the state. Initial support for the Foundation came from the Otto Bremer Foundation (now the Otto Bremer Trust), the Northwest Area Foundation, the Norwest Bancorporation, the North Dakota Bremer Banks and the Bush Foundation.

NDCF has continued to grow and flourish over the years thanks to the support of thousands of individuals and businesses who want to make North Dakota a better place to live, work, and play.

National Standards

The National Standards Seal represents official confirmation from the Community Foundations National Standards Board that NDCF has met the most rigorous standards for community foundations. The seal affirms NDCF's commitment to financial security, transparency, and accountability and says that our grantmaking includes an open, competitive process designed to address the changing needs of our community.



This and past issues of the North Dakota Community Foundation's Annual Report are available on our website at NDCF.net



About Our Year

NDCF Board of Directors	4
Letter from our Chair & President.....	5
2019 At-A-Glance.....	6
Our Community Foundations.....	8
Our Statewide Greatest Needs Fund.....	10
New Funds in 2019.....	12

Financial Reports	15
Gifts Received in 2019	18
Grants Awarded in 2019.....	22
Endowment Assets of Our Funds	41

Donors & Memorials	52
-------------------------------------	----

Giving Back/Leaving a Legacy

Here to Help: Our Staff.....	64
You Take the Lead: Donor-Advised and Field of Interest Funds	65



North Dakota Community Foundation Board of Directors, September 2019: *Stairs Top to Bottom:* Breanne Carlson (Lisbon), Georgia “Gigi” Artz (Bottineau), Bonnie Krause (Hazen), Chantel Southam (Mohall), Chris Griffin (Grand Forks) *Floor, First Row:* Mike Killoran (Casselton), Vicki Kunz (Bismarck), Ann Poeschel West (Grafton), Spencer Larson (Linton) *Floor, Second Row:* Patrick Kelly (Bowman), Justin Forde (Argusville), Bruce Dolezal (Dickinson), Troy Walters (Twin Buttes) *Not pictured:* Tim Ottmar (Jamestown), Judy Estenson (Warwick)

NDCF Board of Directors

NDCF is governed by a 15-member Board of Directors. They are volunteers and receive no financial compensation for their service on the Board. They are elected from the population of North Dakota and are selected to represent a broad cross-section of North Dakotans. They can serve two three-year terms and then must leave the Board. This structure ensures that the North Dakota Community Foundation is truly the people of North Dakota’s Foundation.

If you are interested in serving on the NDCF Board, please contact our Bismarck office. We keep a list of potential board members for consideration.

2019 NDCF Board Of Directors:

Chairperson

Michael Killoran, Retired Banker.....Casselton

Vice Chairperson

Vicki Kunz, Retired Insurance Risk Manager..... Bismarck

Secretary-Treasurer

Tim Ottmar, Attorney..... Jamestown

Directors

Justin Forde, Director of Public AffairsArgusville

Chris Griffin, Land Company Owner..... Grand Forks

Spencer Larson, Retired Farm Loan OfficerLinton

Georgia Artz, Director of Public Health Nursing..... Bottineau

Judy Estenson, Nurse Warwick

Bonnie Krause, Retired CEO/GM of Telecommunications Company Hazen

Ann Poeschel West, Financial Advisor..... Grafton

Breanne Carlson, Loan OfficerLisbon

Bruce Dolezal, Regional Bank President..... Dickinson

Troy Walters, Superintendent of Schools Twin Buttes

Patrick Kelly, Dentist..... Bowman

Chantel Southam, CPA..... Mohall

Wayne Hauge, Farmer and CPA* Ray

* term ended April 2019

Chair & President's Letter

One of the things that makes working at and serving on the board of the North Dakota Community Foundation so rewarding is the ability to live your values not just on a personal level, but also through the work of the Foundation.

You see the core values of the NDCF on our cover. While the cynic might say that they are just words on paper, anyone who has worked

with us or who has started a relationship with the Foundation will tell you that those “words on paper” actually mean something...that they truly represent the way business is conducted at the North Dakota Community Foundation. We have literally thousands of interactions every year with donors, grantees, volunteers, other foundations, elected officials, and others interested in our work. In each of those interactions, the values are the “test” as to how we will treat those with whom we interact.

We finished 2019 holding over 700 funds and reaching a major milestone: over \$100 million in assets. In addition, we have made over \$75 million in grants to enhance the quality of life in North Dakota. Those accomplishments would not be possible without the trust and connections that the Foundation enjoys. North Dakotans are savvy people. They can sniff out snake oil salespeople pretty quickly. That is why we are proud of our reputation and hold ourselves to those values every day. That is also why people seek us out when they have questions about charitable giving or how to help their community, their school, or nonprofit organizations – they know that WE know about charitable giving and the needs in North Dakota. And that we will have an honest discussion with them, make suggestions, and share information without putting any pressure on them to make a certain decision. We are your partner in charitable giving, in improving this great state.

Our main focus has been on building up endowment funds for the communities in North Dakota and we are always pleased when a new group of residents approaches us to start a fund in their area. Recently, we have been invited to visit with several school boards to talk about how our program works and how we can provide a structure for receiving donations and funding special projects at their schools. Nearly all have voted to join with us to offer those interested in education in their community an opportunity to help. And our work with donor-advised funds has grown significantly in more recent years, as generous and kind North Dakotans start charitable funds with us and recommend grants to those organizations that mean the most to them.

In all of our interactions NDCF, by living its values, has built a reputation that attracts people, resources and communities to join us in our mission - “To improve the quality of life for North Dakotans by promoting philanthropy and charitable giving”.

Our values have helped us reach this milestone. Our values will continue to guide our work in the future. Our reputation precedes us.

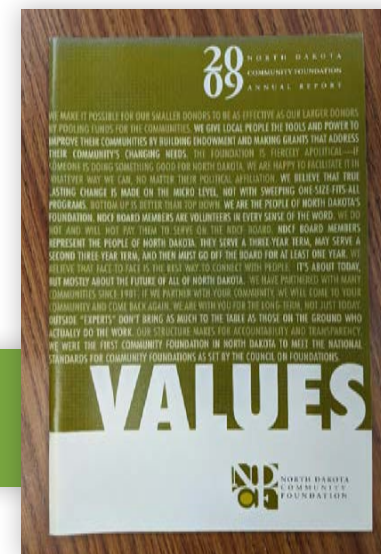
Our values were also on the cover of our 2009 Annual Report, with our old logo and colors!



2019 Board Chair
Michael Killoran



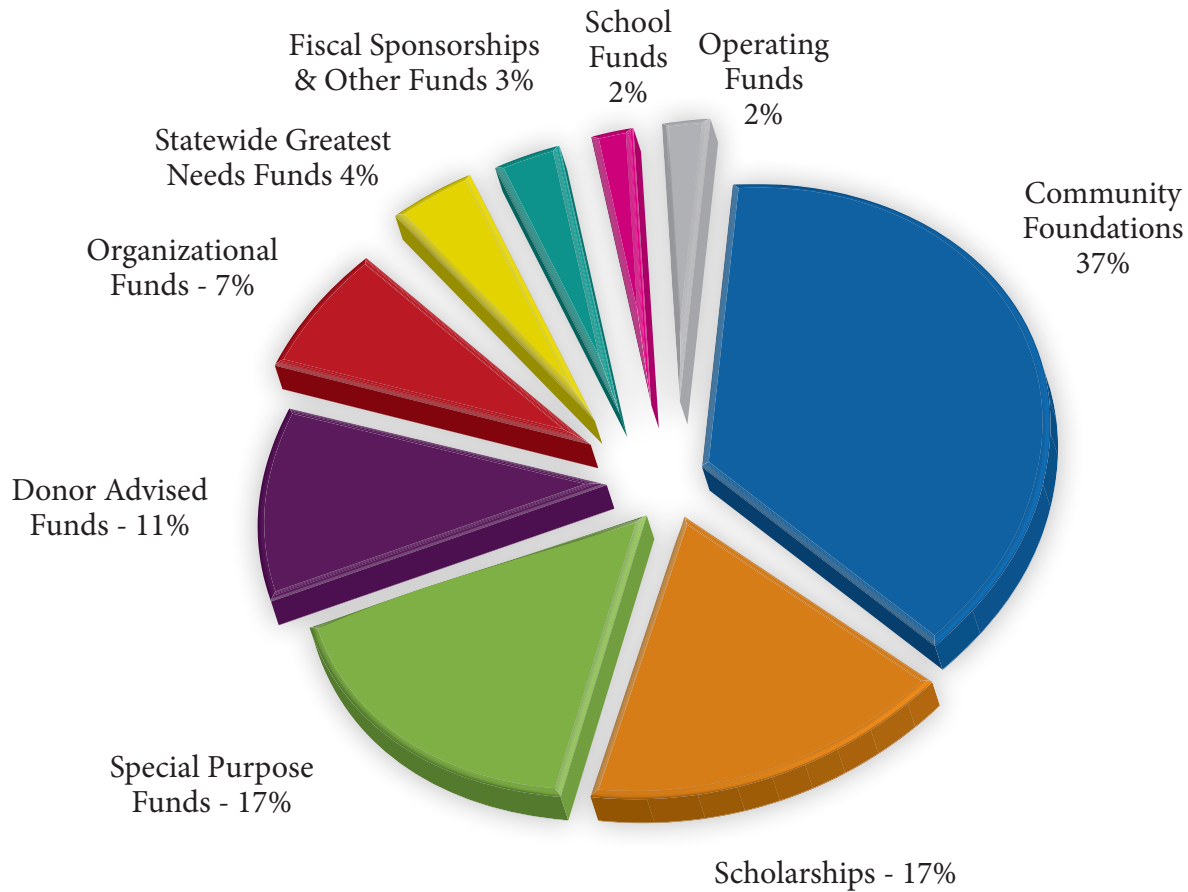
President & CEO
Kevin J. Dvorak



NDCF 2019 At-A-Glance

Total Assests by Fund Type

Our \$105.8 million in total assets are held in the following types of funds:



1,737 gifts, totaling over \$15.3 million to NDCF funds in 2019!

Over **\$500,000 awarded in scholarships** to North Dakota youth and three NEW scholarship funds started in 2019.

41 New Funds started at NDCF in 2019 to improve the quality of life in our state, including the Powers Lake Community Foundation.

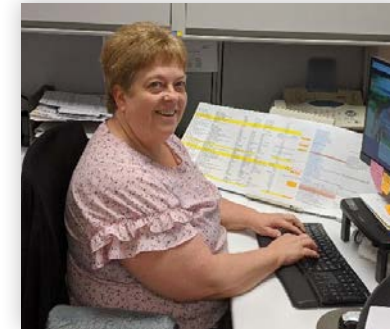


Over **\$4.5 million in grants and charitable disbursements...**for projects and programs all across the state, including a grant for \$1,500 from the Jamestown Community Foundation to support a BIO Girls program in Jamestown. BIO Girls is a 12-week program that builds self-worth in girls grades 2-6 through life-skills curriculum, mentoring and non-competitive physical activity.



Here are some highlights from 2019!

Kara, Christi, and Kevin participated in NonProfit Day at the Capitol in February. Did you know that 1 in 7 North Dakota private sector workers is employed by a nonprofit? That's more than 54,000 ND workers! NDCF is proud to work with nonprofits all across the state to provide programs and projects that improve our quality of life.



We welcomed Deb Clark as our new Office Manager at our Bismarck office last summer!

Welcome!

We hosted the 52nd Annual North Dakota Picnic in Arizona on March 3, 2019. Over 2,000 people enjoyed oldies music, lots of vendors (including chokecherry jelly!), and finding old friends in the crowd. NDCF plans to continue hosting this event for many years, keeping North Dakotans connected to each other and their home state.



2021 ND Picnic in AZ
 Sunday, March 7
 10 am to 2:30 pm
 Red Mountain Park, Mesa, AZ
We hope to see you there!

We had attendees from almost every county in North Dakota!

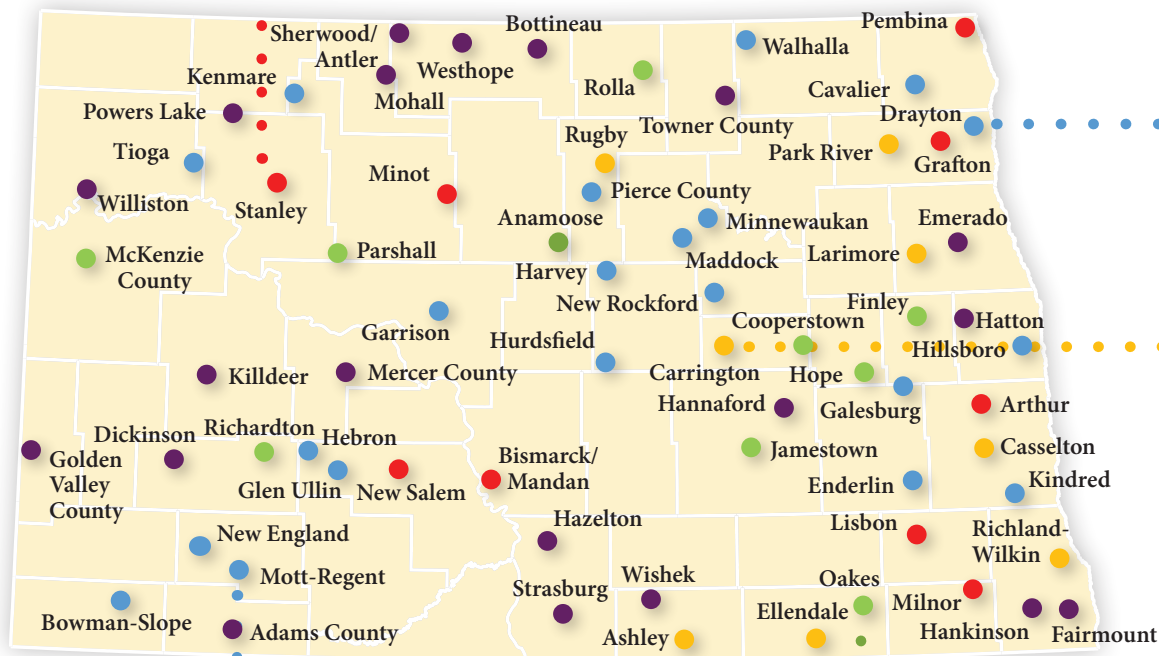
Follow the ND Picnic on Facebook:
<https://www.facebook.com/ndpicnic/>

Our Community Foundations

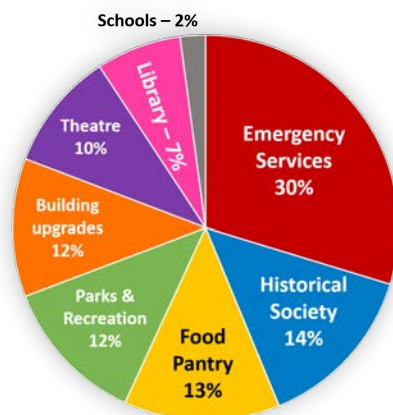
Our local community foundations are the signature program of the North Dakota Community Foundation. NDCF currently manages local community funds for 67 different communities, counties, or areas in the state. These funds each have an advisory committee made up of local residents that lead fundraising efforts and recommend grant awards. These grants fund projects and programs that greatly improve the quality of life in these communities. It's an excellent example of local residents keeping their charitable dollars in their own hometown, supporting their own nonprofit organizations and needs. Here are some examples from 2019:



The Stanley Area Community Foundation awarded over \$57,000 in grants in 2019! This growing community foundation is a major contributor and supporter of projects and programs in Stanley and the surrounding area. 2019 grantees were the Mountrail Community Food Pantry, the Domestic Violence Program of NW ND, Stanley Community Schools, the Mountrail County Health Foundation, the Stanley High School FFA, the Sibyl Center for Life Enrichment, and the Van Hook Association!



The Mott-Regent Community Foundation has been awarding grants since 2013 and what an impact it has made in the area! Grants have been awarded to numerous organizations in the two communities, in a variety of areas, as shown in the pie chart. Every local community foundation at NDCF has its own Advisory Committee that recommends grant awards because these volunteers know the needs in their community best.



"We are so thankful to have received this grant (from the Carrington Community Endowment Fund). The monies granted allowed 23 youth the opportunity to gain knowledge of basic rules, golf etiquette, and technique that they may not have had the opportunity to due to cost of purchasing their own equipment. Several of our golfers had always wanted to golf but did not have the funds to do so. Several of our golfers, that had never swung a club, plan to continue with the sport and are looking forward to joining the high school golf team." – Wendy Kay Schmid, CrossRoads Golf Club



The Drayton Area Community Foundation presents their Community Award to a resident who has improved life in Drayton through their service. The 2019 winner was Lorna Anderson "for going above and beyond to make Drayton a better place to live." Pictured left to right: Rob Boll, Chair of the Drayton Area Community Foundation, Community Award recipient Lorna Anderson, and Sally Kliniske, member of the Drayton Area Community Foundation Advisory Committee and Executive Director of Pembina County Meals and Transportation.

- \$1 Million +
- \$500,000 – \$999,999 in total assets
- \$250,000 – \$499,999 in total assets
- \$100,000 – \$249,999 in total assets
- 0 – \$99,999 in total assets

- **Total assets in our Community Endowment Fund Program is over \$39 million!**
- **422 grants** were awarded in 2019 from our Community Foundations, totaling over **\$1.3 million!**
- Welcome to our newest community foundations: **Powers Lake, Mercer County, and the Hazelton-Moffit-Braddock "Uncle T's" Community Foundation!**

"The support/service that the Grafton Community Foundation (GCF) has received in the past from the NDCF has been exemplary. Amy and Kevin both attend the GCF committee meetings and definitely provide valuable support to us."

- Russell Carignan, Chair, Grafton Community Foundation

A huge thank you to Frank Larson, founder of Starion Bank, who offered a \$100,000 match for all donations to the community foundations in Ellendale and Oakes in 2019! These two committees raised more money last year than they had ever raised in a single year before, thanks to this incentive. Frank was also honored last year with the Walt Odegard Leadership Award from the ND Association of Nonprofit Organizations and he and his late wife JoAndrea were honored with the Legacy of Giving Award from the Northern Plains Chapter of the Association of Fundraising Professionals, Midwest. Pictured left to right are Starion Bank representatives at the AFP Midwest Luncheon: Aaron Tschosik, Market President of Ellendale branch; Curt Walth, Executive Vice President; Frank Larson, Founder of Starion Bank; Craig Larson, CEO & Chairman of the Board; Michelle Larson, Board Member; John Zetocha, Market President of Oakes branch.

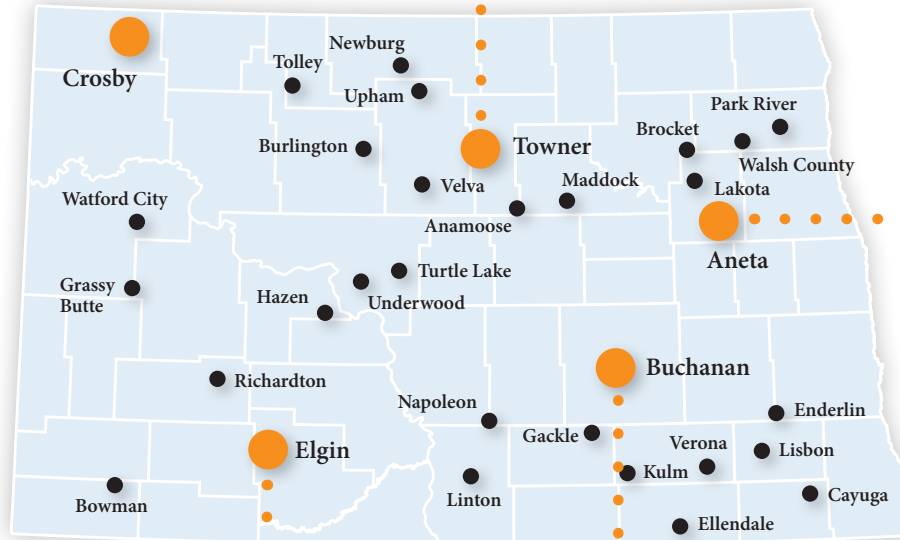


Statewide Greatest Needs Fund

NDCF's Statewide Greatest Needs Fund provides grant dollars for projects and programs across the state that make a significant difference in the quality of life of area residents. For some communities, NDCF's Statewide Greatest Needs Fund is the only funding source they have to help them make improvements in their town.

NDCF's Board of Directors reviews grant applications once a year and determines grant awards. NDCF was pleased to award \$153,493 in 2018 to 34 organizations, including those shown here.

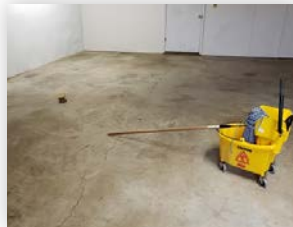
Meadowlark Arts Council received a \$5,000 grant to repair and update the Dakota Theater building. "Our theater serves all of Divide County as well as surrounding areas. We have people from as far south as Williston and Watford City that come to some of our programs and events and from Montana and Estevan Saskatchewan Canada. Our theater building is home to the Dakota theatre but is also a community used building. It has been home to many events, parties and organizations over the years and hope to have it for many years to come!" - Desiree Prochazka, Meadowlarks Arts Council



- The McHenry County Historical Society is creating a Western Museum in the former Towner City Hall (built in 1906). NDCF's grant will be used to replace old windows that are currently boarded up to improve the building's curb appeal and bring in natural light. Photo: Kara Geiger with NDCF presents the grant check to Kathy Holz of the McHenry County Historical Society.



Approximately 15% of Grant County's population of 2,300 people lives in poverty. Now there is a brand new food pantry in Elgin to provide a resource for these residents, thanks to a grant from NDCF. The \$5,000 grant purchased a refrigerator, freezer, shelving and other supplies to help establish the food pantry in the back portion of a Main Street business. Volunteers built the shelves and helped stock the pantry. It will be sustained with support from the Great Plains Food Bank and other donations from area organizations and churches.



The Aneta Fire Protection District received a grant to help purchase a 3,500 gallon water tank and pump apparatus for installation on their late model cab chassis truck. The Fire District serves the City of Aneta, along with seven townships and also shares resources with several other regional communities. Pictured left to right: Aneta Fire Chief Lon Zellner, Trevor Schaible, Adam Middlestead, and James Knutson receive the grant check from NDCF.



- A Moment of Freedom therapeutic riding program provides equine assisted services to individuals with special needs, including those in wheelchairs and on the autism spectrum. They currently have a waiting list of parents with children who wish to utilize their services, which help with sensory issues and muscle control. The grant from NDCF's Statewide Greatest Needs Fund will assist in purchasing necessary tack including helmets, bridles, halters, saddles, and special safety stirrups, as well as other supplies including water tanks and a hay feeder.



Would you like to make a difference in communities across North Dakota? Make a donation to our Statewide Greatest Needs Fund in 2020 and you will support projects like these all across our state! Or leave a gift in your will to this fund and make a difference forever!

To apply for a SWGN grant, go to NDCF.net/receive/swgn. Applications are due by July 31, 2020.



New Funds

NDCF manages over 700 funds for the betterment of North Dakota citizens and their communities. We were pleased to welcome the following funds in 2019:

New Community Foundations

Community foundations are permanent, flexible, financial resources for their communities and surrounding area. The grant money they provide to local projects and programs every year can make a huge difference in the quality of life for their residents. Over time, these endowment funds can become a substantial source of funding for their communities. Some communities also establish non-endowment funds for special projects in their area. The following community funds were started in 2019. NDCF manages 67 local community foundations in North Dakota.

Emerado Community Foundation Project Fund

Hazelton-Moffit-Braddock “Uncle T’s” Community Foundation

Mercer County Community Endowment Fund

Mercer County Community Project Fund Non-Endowment

Powers Lake Community Foundation

Richland/Wilkin Community Foundation Annual Campaign Fund



The Hazelton-Moffit-Braddock “Uncle T’s” Community Foundation was established in honor of Ted Ranschler, a long-time and beloved member of the community.

New School Funds

Numerous school foundations have been established in the last several years to provide additional resources to cash-strapped school districts. The additional funding from our school foundations fill in the gaps, providing everything from supplies to playground equipment to musical instruments to teacher housing. They can also provide long-term stability and resources for the school. Welcome to these new school foundations!

Carrington Public School Fund

Kenmare Public School Fund Non-Endowment

McKenzie County Public School District #1 Foundation Food Service Project Fund and Academic Project Fund

Park River Area Education Foundation – both endowed and non-endowed funds

Sawyer Public School District Fund – Non-Endowment

Wahpeton Alumni Foundation



New Scholarships

With the rising cost of higher education, more and more college-bound students need a helping hand. Thank you to the generous donors that established scholarships for North Dakota students in 2019 through NDCF.

Donna Maston Charitable Scholarship Fund

Kenneth & Arline Lueck Scholarship Fund

Timothy T. & Frances White Scholarship Fund



“Thank you so much for choosing me as a recipient of the Margaret Geiger Green Scholarship Fund. I am currently studying music and communication at North Dakota State University and this scholarship will help me to continue my education. Thanks again, God Bless, and Go Bison!”

New Organization Endowment Funds

Endowment funds provide long-term financial resources for organizations and can be an integral part of how they fund their operations and special projects every year. The stability of an endowment fund means the organization’s mission can continue for countless generations. Welcome to the following new organization endowment funds:

Bethel Church Endowment Fund

Heart of America Germans from Russia Endowment Fund



New Fiscal Sponsorships

NDCF often serves as a fiscal sponsor for organizations, especially new causes just starting out. This allows people to focus on their passion instead of worrying about establishing 501(c) (3) status, tax implications, or other legal and administrative issues. NDCF served as the fiscal sponsor for the following funds created in 2019:

BisMan Trails Advocacy Group

Mohall Mystics

North Dakota Suicide Prevention Coalition

North Dakota Woman Suffrage Centennial Committee

Powers Lake Ambulance Non-Endowment Project Fund

Stark County Sheriff’s Association of Deputies Special Project Fund



The BisMan Trails Advocacy Group is advocating for the preservation and expansion of unpaved trails in the Bismarck-Mandan area, including this natural area off of Burnt Boat Road.

New Special Purpose (Restricted) Funds

Some funds are established at NDCF with a specific cause in mind. These special purpose or “restricted” funds can be related to a one-time disaster response or support specific charities and projects. The following special purpose funds were created at NDCF in 2019:

- Brown Brothers Memorial Recognition Project Fund
- Grassy Butte Quick Responses Project Fund
- Powers Lake Fire Project Non-Endowment Project Fund
- Lynn D. Ebert Charitable Fund, supporting
 - Grafton Community Foundation
 - Grafton High School
 - Lutheran Sunset Home
 - St. John’s Catholic Church
 - Unity Medical Center Foundation



Lynn Ebert left instructions in his will to create the Lynn D. Ebert Charitable Fund at NDCF. It will provide permanent support to several organizations in Grafton, including Lutheran Sunset Home.

New Donor-Advised Funds

Several families established donor-advised funds in 2019 and recommend where their grant dollar should go every year.

- Dahl-Beres Charitable Fund
- Jay Schuler Charitable Fund
- Marvin J. & Barbara A. Masset Family Fund
- Reuben & Clarice Liechty Family Donor Advised Fund
- Risan Family Charitable Fund
- Run for Reason



Reuben & Clarice Liechty



2019 Financial Reports

The NDCF Board of Directors engaged an independent certified public accounting firm to audit the Foundation’s modified cash basis financial statements for the year ended December 31, 2019. The auditors have issued an unmodified opinion dated April 1, 2020, on the modified cash basis financial statements presented on pages 16 & 17. Copies of the audit are on file at the Foundation’s office for inspection.

The North Dakota Community Foundation
Statement of Assets, Liabilities, and Net Assets -
Modified Cash Basis

December 31, 2019
(with comparative totals for December 31, 2018)

ASSETS	2019	2018
Cash and cash equivalents	\$ 5,011,635	\$ 3,774,211
Investments, managed by trust companies, at market	88,704,235	73,165,128
Other investments, at market	7,638,704	5,754,133
Mineral rights	1,385,241	1,358,695
Land & Stock Awaiting Sale	3,848,200	-
Office equipment & vehicles, at cost, less accumulated depreciation of \$148,296 in 2019 and \$132,380 in 2018	30,512	46,429
	<u>106,618,527</u>	<u>84,098,596</u>
Total assets	\$ 106,618,527	\$ 84,098,596
 LIABILITIES AND NET ASSETS		
Liability to annuitants for charitable gift annuities and charitable remainder trust	\$ 735,595	\$ 780,131
Funds held for scholarship commitment	-	7,000
Total liabilities	735,595	787,131
Net assets		
Without donor restrictions	14,131,639	11,480,735
With donor restrictions	91,751,293	71,830,730
Total net assets	105,882,932	83,311,465
Total liabilities and net assets	\$ 106,618,527	\$ 84,098,596

The North Dakota Community Foundation
Statement of Revenues, Expenses, and Changes
in Net Assets - Modified Cash Basis

For the year ended December 31, 2019
(with comparative totals for the year ended December 31, 2018)

	Without Donor Restrictions	With Donor Restrictions	2019	2018
REVENUES				
Gifts and grants	\$ 3,153,972	\$ 12,150,637	\$ 15,304,609	\$ 10,918,409
Interest and dividend income	266,038	1,514,191	1,780,229	1,147,955
Income on minerals	-	277,107	277,107	426,671
Split interest changes	(50,048)	-	(50,048)	(70,666)
Miscellaneous	6,245	10,897	17,142	38,450
Net Assets Released from Restrictions	4,556,491	(4,556,491)	-	-
Total Revenues	7,932,698	9,396,341	17,329,039	12,460,819
EXPENSES				
Program expenses:				
Grants paid	4,371,527	-	4,371,527	3,967,763
Charitable project and program expenses	467,821	-	467,821	572,686
Total program expenses	4,839,348	-	4,839,348	4,540,449
Supporting service expenses				
Management and general	468,387	-	468,387	459,029
Fundraising	438,496	-	438,496	411,137
Total supporting service expenses	906,883	-	906,883	870,166
Total expenses	5,746,231	-	5,746,231	5,410,615
Revenues over (under) expenses	2,186,467	9,396,341	11,582,808	7,050,204
Net unrealized gains (losses) on valuation changes	-	26,546	26,546	95,413
Net realized gains (losses) on long-term investments	98,224	2,659,260	2,757,484	4,347,519
Net unrealized gains (losses) on long-term investments	366,213	7,838,416	8,204,629	(8,927,823)
Total net unrealized and realized gains (losses)	464,437	10,524,222	10,988,659	(4,484,891)
CHANGE IN NET ASSETS	2,650,904	19,920,563	22,571,467	2,565,313
NET ASSETS, BEGINNING OF YEAR	11,480,735	71,830,730	83,311,465	80,746,152
NET ASSETS, END OF YEAR	\$ 14,131,639	\$ 91,751,293	\$ 105,882,932	\$ 83,311,465

The North Dakota Community Foundation Schedule of Gifts Received

Year Ended December 31, 2019

NDCF Statewide Greatest Needs & Field of Interest Funds

Directors Fund	\$ 6,750
Judge Harold M. & Harriet T. Hager Memorial Fund	10,000
Unrestricted Fund	1,703
Total Gifts to NDCF Statewide Greatest Needs & Field of Interest Funds	18,453

Community Funds

Adams County Community Foundation	30,453
Adams County Project Non-Endowment Fund	100
Anamoose Area Community Foundation	11,258
Ashley Community Endowment Fund	103
Bismarck/Mandan Community Foundation	9,111
Bottineau Community Endowment Fund	6,865
Bowman/Slope Community Foundation	15,000
Carrington Community Endowment Fund	15,553
Casselton Community Endowment Fund	16,061
Cavalier Community Foundation	463
Cavalier Non-Endowment Fund	2,100
Cooperstown Community Foundation	5,563
Dickinson Area Community Foundation	16,548
Dickinson Area Community Foundation Non-Endowment Fund	3,250
Dickinson Area Community Foundation Project Fund	658
Drayton Area Community Foundation	22,062
Ellendale Area Community Foundation	89,491
Emerado Community Development Coalition Fund	5,450
Emerado Community Endowment Fund	3,645
Emerado Community Foundation Project Fund	12,016
Enderlin Area Community Endowment Fund	2,750
Enderlin Community Non-Endowment Fund	1,099
Fairmount Community Endowment Fund	1,750
Finley Community Endowment Fund	2,410
Galesburg Area Foundation	1,400
Galesburg Community Non-Endowment Fund	2,470
Garrison Area Community Foundation	5,103
Glen Ullin Area Community Foundation	100
Golden Valley County Community Foundation	13,000
Grafton Community Foundation	5,300
Hankinson Community Endowment Fund	350
Hannaford Area Community Foundation	10
Hatton Area Community Foundation	37,732
Hatton Area Community Foundation Non-Endowment	5,258
Hazelton-Moffit-Braddock "Uncle T's" Community Foundation	26,484
Hillsboro Community Foundation	9,308
Hope Area Community Foundation	11,222
Hope Area Community Foundation Non-Endowment Fund	9,000
Kenmare Area Community Foundation	13,840
Killdeer Area Community Foundation	23,000
Kindred Area Community Foundation	7,950
Larimore Community Endowment Fund	6,076
Lisbon Community Endowment Fund	11,311
Maddock Community Endowment Fund	776
McKenzie County Community Foundation	27,320
Mercer County Community Endowment Fund	103
Mercer County Community Project Fund Non-Endowment	26
Minot Community Endowment Fund	1,000

Mohall Area Community Foundation	\$ 8,025
New England Community Foundation	1,000
New Rockford Community Foundation	4,875
New Salem Area Community Foundation	23
Oakes Area Community Foundation	81,100
Park River Community Endowment Fund	10,415
Parshall Area Community Foundation	10,923
Powers Lake Community Foundation	20,100
Richardton Area Community Foundation	3,590
Richland/Wilkin Community Foundation Annual Campaign Fund	278,069
Richland/Wilkin Community Foundation	6,550
Rolla Community Endowment Fund	9,717
Rolla Community Non-Endowment Fund	3,420
Rugby Community Endowment Fund	4,940
Sherwood/Antler Community Foundation	3,526
Sherwood/Antler Community Fund Non-Endowment	4,193
Stanley Area Community Foundation	156,600
Stanley Area Community Foundation Non-Endowment Program Fund	300
Tioga Community Foundation	100
Williston Area Community Foundation	5,000
Wishek Area Community Foundation	26
Total Gifts to Community Funds	1,104,388

Scholarship Funds

Alice Olson Byron Memorial Music Scholarship Fund	500
American Legion Riders ND District #2 Scholarship	1,500
Benjamin Berg Memorial Scholarship Fund	1,103
Bismarck Rotary Club Scholarship Fund	7,365
Bismarck Schools Scholarship Fund	5,000
Clarence Johnson/Eunice Iwen Scholarship Fund	2,684
Curtis Stern Memorial Scholarship Fund	5,340
Donald and Irene Metzen Scholarship Fund	6,667
Donald B. Sass Scholarship Fund	1,665
Donna Maston Charitable Scholarship Fund	5,000
Dr. Roger E. Meisner Veterinary Medicine Educational Fund	142,880
Dushinske & Jamison Water Resources Scholarship Fund	6,834
Esther Hample Scholarship Fund	1,108
First State Bank of ND Scholarship Fund	4,000
Garry Opp Memorial Scholarship Fund	750
Harold & Eldeane Johnson Scholarship Fund	6,667
Helen & Everett Barta Scholarship Fund	500
Hettinger Class of 1996 Memorial Scholarship Non-Endowment	1,543
Holli Kautzman Memorial Scholarship Fund	37,600
Inspired Woman Scholarship Fund	20
Jeff Burgess Memorial Scholarship Fund	1,700
John E. Conneran Memorial Scholarship	203
Kenneth & Arline Lueck Scholarship Fund	83,149
Kirstin Skari Memorial Scholarship Fund	100
Lisa Kraft Memorial Scholarship Fund	200
Lisbon Dollars For Scholars Fund	5,000
Lloyd A. Engh North Star Masonic Lodge Fund	289
Monroe Scheflo Scholarship Fund	79
ND Career & Technical Education Endowment Fund	3,192
ND Farmers Union-Alan Bergman Scholarship Fund	18,025
ND Veterinary Medical Association Scholarship Fund	2,650
ND Veterinary Medical Association Scholarship Non-Endowment Fund	5,100
North Sargent Class of '63 Scholarship Fund	122
Raider Scholarship Fund	2,656
Rick & Nancy Warner Bigler Scholarship Fund	1,030
Ronald D. Liudahl Scholarship Fund	612
Rugby High School Alumni Scholarship Fund	230
Timothy T. & Frances White Scholarship Fund	100,000
Tiny & Joyce Gebhardt Scholarship Fund	515

Tom & Ruth Bettenhausen Scholarship Fund	\$ 13,093
Travis Allen Hohbein Memorial Scholarship Fund	270
U.S. Durum Growers Association Scholarship Fund	1,050
Total Gifts to Scholarship Funds	477,990

School Funds

Alexander Public School Foundation Fund	22,065
Carrington Public School Fund	6,225
Grenora Public School Foundation Fund	7,664
Kenmare Public School Fund Non-Endowment	500
Kulm Public School Foundation Fund	1,950
Kulm Public School Foundation Non-Endowment Fund	9,255
Lidgerwood Public School Foundation	186,500
Lidgerwood Public School Project Non-Endowment	4,286
Lisbon Public Schools Endowment Fund	30,000
McKenzie County Public School Dist #1 Foundation Food Service Project Fund	5,775
McKenzie County Public School Dist #1 Foundation Fund Non-Endowment	3,000
McKenzie County Public School Foundation Dist #1 Academic Project Fund	5,000
Park River Area Education Foundation - Endowment	5,000
Park River Area Education Foundation	2,000
Powers Lake Public School Foundation	4,000
Ray-Nesson Public School Endowment	120,030
Sawyer Public School District Fund - Non-Endowment	200
Stanley Community Schools Foundation	36,031
Wahpeton Alumni Foundation	850
Will Athletic Complex Renovation	180,708
Total Gifts to School Funds	631,038

Organization Funds

Badlands Ministries Endowment Fund	30,000
Bethel Church Endowment Fund	50,000
Catholic Charities North Dakota Endowment Fund	10,000
Cooperstown Bible Camp Endowment Fund	78,124
Dickinson Rotary Charitable Fund	5,000
Enderlin Museum Endowment Fund	5,456
Farm Rescue Foundation	17,500
FirstChoice Clinic Endowment Fund (BISMARCK)	5,000
FirstChoice Clinic Endowment Fund	10,000
Gateway to Science Endowment Fund	26,170
Harvey Public Library Endowment Fund	10,200
Heart of America Germans from Russia Endowment Fund	15,552
Humanities North Dakota Endowment Fund	13,658
Jeremiah Program Fargo Moorhead Scheel Barry Endowment	206,031
Lord of Life Lutheran Church Endowment Fund	28,000
Missouri Slope Areawide United Way Endowment Fund	22,135
North Dakota Teen Challenge Endowment Fund	10,000
Pride, Inc. Endowment Fund	100
Red Willow Ministries Endowment Fund	10,000
Richardton Health Center Foundation Endowment Fund	1,070
Rural Leadership ND Alumni Foundation	10,890
Ruth Meiers Hospitality House Endowment Fund	2,717
United Way Dickinson Endowment	9,000
Washburn Volunteer Ambulance Service Endowment Fund	29,528
Young Life North Dakota (Bismarck) Fund	10,000
Total Gifts to Organization Funds	616,130

Restricted Funds

Alice Baer Memorial Foundation	10,103
Argue Family Fund for the Hamilton Cemetery Assoc.	1,500
Beaulieu Cemetery Fund	500
Bellevue Cemetery Association Endowment Fund	20,635
Brown Brothers Memorial Recognition Project Fund	14,439
Cav-Landic Trail Non-Endowment Fund	12,650

Dakota Children's Advocacy Center Endowment Fund	\$ 5,000
Dakota Social Justice Fund	400
Donor Advised Funds	1,988,821
First Lutheran Church Endowment Fund	25,000
Friendship Park Dickinson Project Non-Endowment	170,546
Friendship Park: Dickinson Endowment Fund	5,413
Gary Bird Charitable Endowment Fund	10,000
Grassy Butte Quick Responses Project Fund	670
Gustavus Adolphus Cemetery Fund	50
John D. Kelly Endowment Fund	1,592
Lynn D. Ebert Charitable Fund	8,042,940
Mandaree Head Start Building Fund	60,000
Mary G. Wiltse Memorial Endowment Fund	353
McElroy Endowment Fund	10,161
Morton Mandan Public Library Building Fund	1,500,000
North Dakota Community Foundation Disaster Relief Non-Endowment Fund	101,579
Parkinson Wellness Programming Fund	400
Pleasant Hill Cemetery Endowment Fund	950
Powers Lake Fire Project Non-Endowment Project Fund	25
Remainder Annuity	4,047
Sacred Heart of Jesus Shrine on the Prairie Endowment Fund	5,000
Saddle Club Arena Complex:Killdeer Fund	17,650
West River Veterinary Clinic Legacy Foundation	17,500
Total Gifts to Restricted Funds	12,027,922

Operating Endowment Funds

Cynthia Timmins Maule Memorial Fund	25
Dr. Richard H. & Mischelle Timmins Fund	25
Kevin J. Dvorak Fund	515
Total Gifts to Operating Endowment Funds	565

Non-Endowment Funds

31:8 Project	29,332
BisMan Trails Advocacy Group	515
Bismarck Global Neighbors	9,500
Central Dakota Cyclists Fund	5,400
Enlightening Smiles	1,000
Friends of the Rail Bridge Fund	15,308
Harmon Lake Recreation Area Fund	1,000
Heart of America Germans from Russia Heritage Project	22,761
Killdeer Ambulance Service Fund	21,000
Lewis & Clark Trail Museum	200
Mohall Mystics	4,497
Mountain Bornum Park Fund	2,500
North Dakota Aviation Hall of Fame Fund	500
North Dakota Music Hall of Fame	400
North Dakota Suicide Prevention Coalition	9,106
North Dakota Woman Suffrage Centennial Committee	1,000
Operating Fund	22,506
Powers Lake Ambulance Non-Endowment Project Fund	25
Recidiviz	248,262
Robinson Hall Restoration Project	6,035
Save Our Strand Fund	225
Stark County Sheriff's Association of Deputies Special Project Fund	48,149
Wishek Pool Renovation Project	8,357
Total Gifts to Other Non-Endowment Funds	457,578

Less: Internal Grants

(29,455)

Total Gifts to All Funds - 2019

\$ 15,304,509

The North Dakota Community Foundation

Schedule of Grants Paid

Year Ended December 31, 2019

NDCF Statewide Greatest Needs & Field of Interest

NDCF Statewide Greatest Needs Fund

Country Community Cupboard, Inc. - Assistance w/ Establishment of Country Community Cupboard Inc Food Pantry	\$ 5,000	
Lisbon Recreation Board - Baseball field groomer and field maintenance	5,000	
Turtle Lake Summer Recreation/TL Park - Baseball/Softball Field Dugout Covers	5,000	
Mercer & McLean Counties Commission on Aging - Bathroom Remodel	5,000	
Badlands Search & Rescue - BSAR Training & Equipment Upfit	5,000	
Newburg Community Club - Community Club bleachers	4,315	
Community Cupboard of Underwood - Food Pantry Air Conditioning Project	4,249	
Anamoose Park Board - Concessions Stand Addition	5,000	
Gackle American Legion Auxiliary - Cupboard fund	5,000	
Meadowlark Arts Council - Dakota Theater Update Project	5,000	
Ellendale Public Library - Ellendale Library Growth Project	5,000	
Tolley Fire Department - Emergency Generator	5,000	
Kulm Volunteer Fire Department - KFVD	4,000	
City of Cayuga - Lagoon Fence Repair and Repair of Park Fence	4,275	
Grassy Butte Quick Response Unit - Lifepack	5,000	
Emmons County Interagency - Little Lions Daycare safety updates	2,333	
Napoleon Ambulance Service - Napoleon Becoming a Cardiac Ready Community	5,000	
HEART Living At Home Block Nurse Program - Office Computer	1,600	
Maddock Swimming Pool Fundraising Committee - Rural Health Center with Aquatics Center	2,499	
City of Velva - Safe and Healthy Routes for Velva	2,053	
Gackle Senior Citizens, Inc. - Shingle Roof	5,000	
A Moment of Freedom -Tack and Horse Supplies	5,000	
Underwood Senior Center - Kitchen Renovation	5,000	
Richardton Healthcare Foundation - Walk-in Tub and Scale	3,750	
McHenry County Historical Society - Windows for 1906 City Hall	5,000	
Earl Nermoe American Legion Post 269 - Wiring & Cooling	5,000	\$ 114,074
Children & Family Services Funds		
Community Cupboard of Underwood - Food Pantry Air Conditioning Project	751	
United School District #7 - Des Lacs - Burlington Elementary Playground Project	2,000	
Lakota Park Board - Lakota Swimming Pool Improvements	2,560	
Emmons County Interagency - Little Lions Daycare safety updates	2,667	
Tot Lot - Procure Software	5,000	12,978
ND Women's Foundation		
Maddock Swimming Pool Fundraising Committee - Rural Health Center with Aquatics Center	2,501	
Verona Community Center/City of Verona - Exhaust Fan & Ductwork in our Kitchen at Community Center	1,544	4,045
Harry & Merle Stephenson Fund		
Aneta Fire Protection District, Inc. - Tank & Pump apparatus	5,000	
Lakota Park Board - Lakota Swimming Pool Improvements	2,440	
Park River Volunteer Fire Dept - Hose Pressure Tester	2,500	
Pioneer Square Community Center - Roof Repair on Kitchen amd Museum	5,000	
Verona Community Center/City of Verona - Exhaust Fan & Ductwork in our Kitchen at Community Center	2,456	
Walsh County Veterans Memorial Foundation - Walsh County Veterans Memorial	5,000	22,396
Total NDCF Statewide Greatest Needs & Field of Interest Funds		153,493

Local Community Foundation Funds

Adams County Community Foundation		
Hettinger Golf Association - Youth Golf Program		463
Anamoose Area Community Foundation		
Anamoose Park Board - Concessions Stand Addition	2,500	
Anamoose Public School - Playground Upgrade	2,000	

City of Anamoose 2020 Main Street Flowers and Maintenance/Care	\$ 560	
City of Anamoose - 2018 Main Street Sidewalks Project	1,500	
McHenry County Historical Society - Cement floor with heat	500	
Tri-County Senior Meals & Services - Nutrition Services	1,500	\$ 8,560
Ashley Community Endowment Fund		
Ashley JDA - Ashley American Legion Hall	5,000	
Ashley JDA - Ashley Senior Center, paint for outside of building	3,000	
Ashley JDA - Ashley Arts Council - Ashley 125th Celebration Scrapbook	200	
Ashley JDA - Funding for current maintenance and future business opportunities	5,500	
Ashley Medical Center Nursing Program Though BSC	3,500	
Ashley Public School District #9 - Technology Upgrade	2,100	19,300
Bismarck/Mandan Community Foundation		
Bis-Man Mentor Squad (a program of Dacotah Foundation) - Bis-Man Mentor Squad	2,500	
Rebuilding Together Greater Bismarck-Mandan Area, Inc. - Rebuilding Together's Rebuilding Day	5,000	
RoughRider AMBUCS - RoughRider AMBUCS Amtrykes	5,000	
Volunteer Caregivers for the Elderly - Volunteer Caregiver for the Elderly Volunteer Recruitment	5,000	
Heaven's Helpers Soup Café - Development of a Life Skills Project	50,000	67,500
Bowman/Slope Community Foundation		
Bowman County School District - Benchmark Assessment & Leveled Books	2,000	
Bowman Regional Public Library - Calm Down Corner	813	
Southwest Healthcare Services - COPE2Thrive (Creating Opportunities for Personal Empowerment)	2,000	4,813
Carrington Community Endowment Fund		
Carrington Cemetery Board - Tree replacement project	3,998	
Carrington City Library - Computer Lab Makeover (Maker Space)	1,800	
Carrington Health Center - Emergency Response Decontamination Supplies	4,500	
Carrington Youth Center - Candy/Concession Stand Project	2,706	
CrossRoads Golf Club - Summer Youth Golf Camp	1,000	
Central Dakota Sportsmen's Club - WAHLU	750	
Foster County Historical Society, Inc. - Preserving the Museum	3,000	17,754
Casselton Community Endowment Fund		
Casselton Heritage Center, Inc. - Music Event	1,000	
Casselton Park District - Governors' Park Sprinkler System Renovation	3,000	
Casselton Park District - Flowers - Beautification in Casselton	2,000	
Casselton Public Library - Custom Bookcases	2,000	
Central Cass Archery Club - Central Cass Archery	500	
Central Cass Public Schools - Project Sunshine	1,500	
Community of Care - Volunteer Program	1,000	
Cottonwood Golf Course - Cottonwood Clubhouse Parking Lot Repair	2,500	
Rural Cass Community Theatre - Community Theater Directors/Leaders for 2020 Theater Arts Season	7,000	
Rural Cass County Emergency Food Pantry - Upgrade fridge/freezer and additional storage	2,500	
Central Cass Public Schools - Literacy Footprints Guided Reading System (Kindergarten Kit Classroom)	2,770	25,770
Cavalier Community Foundation		
Cavalier Chamber of Commerce - Cavalier Brochure	250	
Cavalier Public Schools - Cavalier PTO - Missoula Children's Theatre 2020	400	
City of Cavalier - Swim Platform, Pickleball Set, Splash Pond & Portable Youth Pitching Mound	1,100	
Faith In Action Health Coalition - Travel Stipends	1,000	
Love One Another Now (L.O.A.N.) Program - Money to purchase socks, underwear and bras	750	
Northeastern North Dakota Heritage Association - Archive & Artifact Committee Storage Project	1,000	
Pembina County Historical Society - Siding on St. Anthony's Church Bell Tower	600	
Pembina County Imagination Library - Pembina County Dolly Parton Imagination Library	500	
Pembina County Public Health - Bright Futures Child Health Program Guidelines 2nd Edition Electronic	400	6,000
Clarence Johnson & Eunice Iwen Community Foundation for Arthur, ND		
City of Arthur - Arthur Community & Fire Hall Remodel	48,000	
City of Arthur - City Signage	10,000	
City of Arthur - Beautification & Summer Events for the City of Arthur	4,500	
Hunter Volunteer Fire Department - Equipment upgrade - Purchase of SCBA unit	5,000	
Job Development Authority of Arthur - Kelly's Cafe Update	3,000	

Job Development Authority of Arthur - Lighting Project	\$	1,000		Fairmount Public Schools - Fairmount Press Box and Scoreboard	\$	1,355	\$	3,355
Job Development Authority of Arthur - Mall Repairs		4,500		Finley Community Endowment Fund				
Job Development Authority of Arthur - Arthur Gym		10,000		City of Finley - Mower Project		2,000		
Job Development Authority of Arthur - Original Buildings		25,000		Finley Days - Tent Repair		2,200		
Northern Cass Dollars for Scholars - 2019 Dollars for Scholars Scholarships		5,000		Finley Public Library - Library Book Project		1,000		
Northern Cass School District - Family, Career & Community Leaders of America National Conference		3,000		Finley Wildlife Club - Bi-Annual Auction		2,200		
Rural Cass County Emergency Food Pantry - Northern Cass Backpack Program		2,000		Steele County Soil Conservation District - Women's Ag Night		1,000		
Arthur Cemetery Association - Maintenance - Tree Removal		1,500		Steele County Vintage Farming Club - 5th Annual Finley-Sharon Plowing Bee		1,000		9,400
BIO Girls, Inc. - BIO Girls - Northern Cass ND - 2020		2,000		Galesburg Area Foundation				
City of Arthur - Arthur Community & Fire Hall Remodel		38,000		Hope Early Learning Center - Electronic - Educational		650		
City of Arthur - Arthur's Annual Tree Lighting Event		10,000		May-Port CG School District - May-Port CG Greenhouse Project		2,000		2,650
City of Arthur - City Signage - Final Payment		10,000		Garrison Area Community Foundation				
Community of Care - Operating Expenses for Arthur Office of Community of Care		5,000		Benedictine Living Center of Garrison - Multi Sensory Room		1,000		
Job Development Authority of Arthur - Continued Support for Term Debt		15,000		Better Living for Garrison - SkyFest Over Fort Stevenson		1,000		
Job Development Authority of Arthur - Repair Bill		7,500		Little Lunches Backpack Program - Little Lunches Backpack Program		2,000		
Job Development Authority of Arthur - New Overhead Doors		8,000		North Dakota Firefighter's Museum - NDFM Exhibit Signage Project		1,000		5,000
Joint Arthur & Hunter Park District - Northern Cass Pass		20,000		Glen Ullin Area Community Foundation & the Ismael & Rose Diede Charitable Fund for Glen Ullin				
Northern Cass Dollars for Scholars - 2020 Dollars for Scholars Scholarships		5,000		Glen Ullin Park Board - 2019 Baseball Concessions Stand		871		
Northern Cass School District - Northern Cass Hall of Fame		1,000		City of Glen Ullin - 2019 Council Chambers South Windows		871		
Clarence Johnson/Eunice Iwen Scholarship Fund - Grant to scholarship fund		2,684	\$	246,684	Glen Ullin Community Hall of Fame - Glen Ullin Community Hall of Fame		871	
Cooperstown Community Foundation				Best Friends Mentoring Program - Glen Ullin School-Based Mentoring		750		
Cooperstown Park Board - Cooperstown Pool		1,500		Marian Manor Healthcare Center Portable staircase for Therapy services		871		
Cooper Theatre, Inc. - CooperTheatre, Inc - Update Carpet in theatre		1,000		Glen Ullin Public School - Summer Blast		500		
Cornerstone Community Church - Awana Project		1,000		Glen Ullin Fire District - Wildland PPE		871		5,606
Cooperstown Golden Age Club - Upkeep & Expense		1,700		Golden Valley Count Community Foundation				
Griggs County Council on Aging - Piano Upgrade		1,700		Beach City Park Board - South baseball field renovation				2,883
Griggs County Historical Society - Air Conditioning for Main Auditorium of Museum		1,700		Grafton Community Foundation, Harry & Merle Stephenson Memorial Fund & Sig Jagileski Memorial Fund				
Hospice of the Red River Valley - Bereavement Services		1,000		BIO Girls - Site Fee & Participant Registration Fees for Annual Program in Grafton		1,500		
Trinity Lutheran - Vacation Bible School		1,000		City of Grafton - SOAR Community Connection		5,300		
Zion Lutheran Church - Community Vacation Bible School		1,000	11,600	Grafton Educational Foundation - To purchase playground equipment for Century Elementary		4,259		
Dickinson Area Community Foundation Funds				Save Our Strand - Hearing Impaired Devices & Aisle Lighting		5,500		
Amen Food Pantry - "Fill the Shelves" at the AMEN Food Pantry		300		St. Thomas Fire Protection District - Safety Gear Clean-Up Equipment		7,184		
AZ Booster Club - AX Intensive Class		400		Walsh County Heritage Village - Install Handicapped Accessible Entrances on the Theater Building		3,603		27,346
Community Action Partnership - Temporary Financial Assistance		300		Hannaford Area Community Foundation				
Women Empowering Women - Financial Literacy		360	1,360	Hannaford Area Arts Council - Office Needs		500		
Drayton Area Community Foundation				Hannaford Park District - City Park Playground Equipment Project		2,000		2,500
Drayton Park Board - Dylan Arena Concrete Project		500		Harvey Area Community Foundation				
Drayton Public School - Pembina County Back Pack Program		1,000		Central Cinema Theater - Sound System upgrade		2,000		
Ox Cart Trails Historical Society, Inc. - HG Johnson Memorial Hall Basement		1,000		City of Harvey - Harvey Centennial Nature Park West Pathway		1,900		
Pembina County Meals & Transportation - Local Match for two transit vehicles		1,000	3,500	Harvey Ambulance Service, Inc. - Vehicle Replacement Fund		3,000		
Ellendale Area Community Foundation				Harvey School District 38 - Arts and literature for the 21st Century Learner		500		
Ellendale American Legion Baseball - Ellendale American Legion Baseball Complex Renovation		5,000		St. Aloisius Medical Center - Harvey Cardiac Ready Community		700		8,100
Ellendale Area Arts Council - Summer Concerts in the Park		1,000		Hebron Community Foundation & the Ishmael & Rose Diede Charitable Fund for Hebron				
Ellendale Area Arts Council - Kid's Art		1,000		Hebron Public School - We're "almost" Teenagers and We're Bored!		325		
Ellendale Park Board - Creek clean up		3,000		Hebron Fire Protection District - Purchase Fire Fighting Equipment		1,000		
Ellendale Park Board - Oster Park Permanent Bathroom Improvements		4,000		Hebron Public Library - Computers		1,000		
Ellendale Public Library - Ellendale Public Library Growth		1,500		Hebron Public School - Sensory Input Space		795		
NDSU Extension Service - Dickey County - Installing new ceiling, lighting, and bathroom remodel in the new archery range		4,000		Hebron Public School - Builders for a Brighter Future		500		
O.P.E.R.A., Inc. - Phase 1 Renovation of the Historic Ellendale Opera House		1,000		Hebron Public School Board - Activity/Sport Improvement Program		1,000		
Prince of Peace Care Center - Providing All Easy Access and Care		1,040		Hebron Senior Center - Nutritional Meal Program for the Hebron Senior Center		1,000		5,620
Trinity Bible College - Washing Machine		600	22,140	Hillsboro Community Foundation				
Emerado Community Endowment Fund				Hillsboro Business Association - HBA Tent Project		2,500		
Emerado Community Foundation Project Fund - "Emerado Welcomes You" Sign Fund		666		Hillsboro Elementary School - Engagement in School and Recess		1,285		
Enderlin Area Community Endowment Fund				Hillsboro Veterans Club Association - Alarm System Installation		803		
City of Enderlin - All Hands on Deck - Phase II Swimming Pool		1,225		Northern Lights Youth Services - Customer Seating		1,487		
Enderlin Historical Society & Museum - Tech		375		Trail County Historical Society - Laptop replacement & additional shelves for records displays		1,500		7,575
Enderlin Lions - Replace Rental Tent		977		Hope Area Community Foundation				
Happy Trails Child Care - New Facility		725		American Legion Auxiliary Unit 18 Hope - Kitchen & Cleaning Items		500		
Maryhill Manor - Whirlpool Bathing Tub		1,225	4,527	City of Hope - Legion Baseball		1,000		
Fairmount Community Endowment Fund				City of Hope - Hope Days 2019 Town Celebration		1,000		
Fairmount Public Schools - Evelyn & Claire Hermes Scholarship		2,000		Hope Dollars for Scholars - Hope Dollars for Scholars		500		
				Hope Early Learning Center Electronic - Educational		1,200		
				Hope Early Learning Center - Hope Little Learners Preschool - Educational Electronics		1,200		

Hope Housing Development Authority - Hope Housing Multi-family apartment units	\$ 1,400	
Hope Library - Books for Hope	286	
Hope Park District - Hope Swimming Pool Diving Board	1,000	
Hope Park District - Hope Cemetery - Trimming Trees & Filling Holes	500	
Hope Park District - Hope Golf Course - New Benches	1,000	
Hope Park District - Clean up of pool park	500	
Hope Volunteer Ambulance - Epi-Pens	1,200	
Jefferson-Steinke Legion Post 18 - Legion Baseball Equipment Program	1,000	
Steele County Historical Society - Hope Cannon Fund	900	
Steele County Historical Society - New Steel Building for Displays & Storage	<u>1,500</u>	\$ 14,686
Jamestown Community Foundation		
BIO Girls - BIO Girls 2019	1,500	
Anne Carlsen Center - River's Bend & Horseshoe Park Med Cart Computers	1,100	
Marketplace of Ideas/Marketplace for Kids Inc. - Marketplace for Kids "Igniting the Spirit of Innovation"	2,500	
Jamestown Fine Arts Association - The Downtown Arts Market	1,000	
Jamestown Park & Recreation Department - Community Bike Fleet	2,000	
Eventide - Resident Patio Project	1,100	
Gussner PTO - Snack Fund - The School Snack Fund	<u>2,000</u>	11,200
Kenmare Area Community Foundation		
City of Kenmare - Doggy Waste Stations	1,000	
Kenmare Park District - Kenmare's downtown park square playground addition	1,690	
Kenmare Wheels & Meals - Steam Table	1,000	
Society of St. Stephens Food Pantry - Backpack Program	2,000	
Trailblazers 4H Club - Project Kits for Ward County Achievement Days	500	
Ward County Public Library - Kenmare Branch - Summer Reading - A Universe of Stories	<u>500</u>	6,690
Killdeer Area Community Foundation		
Grassy Butte Quick Response Unit - Sked Rescue System		670
Kindred Area Community Foundation		
BIO Girls - Kindred, ND Site	1,500	
Kindred Area Arts Partnership - Native American Artist Series:	1,000	
Kindred Public Schools Artists in Residence and Community Event		
Kindred High School Boosters Club - Regional Track	900	
Kindred Park Board - Planting (trees) at Progressive Ag Softball Fields	1,000	
Kindred Youth Baseball - Kindred Baseball and ADA Renovation Project	<u>900</u>	5,300
Larimore Community Endowment Fund		
Edna Ralston Public Library- Continuation of the Digital Catalog Project for the Edna Ralston Library	5,000	
Hospice of the Red River Valley - Bereavement Program Support	1,500	
Larimore High School After-Prom Party	1,000	
Radiant Little Lambs Daycare Center - Electrical update	<u>5,000</u>	12,500
Larry J. Wilwant Fund for Pembina, ND		
City of Pembina - Cement Project at Ice Rink	5,000	
City of Pembina - Community Center Renovation Project 12 of 14	10,000	
City of Pembina - Greens Maintenance & Equipment Upkeep	3,887	
City of Pembina - 4th of July Celebration	5,000	
City of Pembina - Advertising	5,000	
North Border School District - After Prom Party	500	
Pembina Ambulance Service, Inc. - Zoll Monitor	5,000	
Pembina Rural Fire Department - Replace Outdated Turnout Gear	<u>5,000</u>	39,387
Lisbon Community Endowment Fund		
City of Lisbon - City Sign Concrete/Memorial Park Area	4,100	
Hospice of the Red River Valley - Youth Bereavement Services	1,000	
Lisbon Bissell Golf Club - Kitchen Flooring	3,200	
Lisbon Public School District #19 - School Based Mental Health Services through The Village	10,000	
Lisbon Public School District #19 - Lisbon Public Schools Fine Arts Committee	624	
Lisbon Public School District #19 - Lisbon First Lego League Team	2,300	
Lisbon Recreation Board - Soccer Goals & Equipment	1,000	
McLeod Historical Preservation Society - Reroof McLeod Fire Hall/Carriage Hall	1,950	
Oakwood Cemetery Association - Purchase New Mower	2,500	
Lisbon Public School District #19 - Junior High Football Uniforms	1,000	
Lisbon Public School District #19 - Russian Cultural Kaleidoscope Presentation	1,210	

Brown Brothers Memorial Recognition Project Fund - Project Support	\$ 435	\$ 29,319
Dale L. Brown Memorial Fund for Lisbon		
Abuse Resource Network - Emergency Need, Self-Sufficiency & Prevention	2,500	
CHI Health at Home - Home Health & Hospice - Volunteer & Bereavement Programs	500	
CHI Lisbon Health - Arthroscopic Equipment Ortho	4,777	
Lisbon Boy Scout Troop 523 - Camp Wilderness	250	
Lisbon Civic & Commerce - Beautification Project	1,500	
Lisbon Fire Department - Lisbon Fire Department Ranger	6,000	
Lisbon Opera House - Concession/Lobby improvement	6,500	
Lisbon Public School District #19 - Lisbon Sensory Path	750	
Lisbon Public School District #19 - "My Kinder Box" Kindergarten Readiness & Parent Involvement	500	
Lisbon Public School District #19 - Sources of Strength	500	
Lisbon Public School District #19 - After School SmartLab T-Shirts	320	
NDSU Extension Service - Ransom County - Firefighters, Flowers & Friends	250	
Ransom County Fair Association - Bathroom Remodel to make Handicap Accessible	5,000	
Ransom County Food Pantry - Restock Shelves & Freezers	2,500	
Ransom County SADD Organization - Student Self-Defense Class	250	
Abuse Resource Network - Clinical Supervision	5,625	
Fort Ransom Sodbusters Association - "ROEN" Sawmill	4,000	
Lisbon Bronco Juniors - Volleyball uniforms	1,500	
Lisbon Pool Preservers - Phase 3 - Wading Pool Remodel	10,000	
Lisbon Public Library - Baker & Taylor Leased Books	4,295	
Lisbon Public School District #19 - Milk Scholarship Fund	4,200	
Lisbon Public School District #19 - Dolly Parton's Imagination Library	700	
Lisbon Public School District #19 - Gearing Up for Kindergarten	3,500	
Lisbon Public School District #19 - Artist in the Classroom	3,330	
Lisbon Recreation Board - Sandager Field Repairs/ Baseball and Softball Equipment	3,000	
Sheyenne Fine Arts Association - 2019-2020 Concert Season	7,500	
South Valley Multi-District Special Education Preschool - Purchase supplies	1,400	
Brown Brothers Memorial Recognition Project Fund - Grant remaining spendable to recognition fund	<u>5,895</u>	87,042
Russell F. Brown Memorial Fund for Lisbon		
Abuse Resource Network - Emergency Need, Self-Sufficiency & Prevention	2,500	
CHI Health at Home - Home Health & Hospice - Volunteer & Bereavement Programs	500	
CHI Lisbon Health - Arthroscopic Equipment Ortho	4,777	
Lisbon Boy Scout Troop 523 - Camp Wilderness	250	
Lisbon Civic & Commerce - Beautification Project	1,500	
Lisbon Fire Department - Lisbon Fire Department Ranger	6,000	
Lisbon Opera House Foundation - Concession/Lobby Improvement	6,500	
Lisbon Public School District #19 - Sensory Path	750	
Lisbon Public School District #19 - "My Kinder Box" Kindergarten Readiness & Parent Involvement	500	
Lisbon Public School District #19 - Sources of Strength	500	
Lisbon Public School District #19 - After School SmartLab T-Shirts	320	
NDSU Extension Service - Ransom County - Firefighters, Flowers & Friends	250	
Ransom County Fair Association - Bathroom Remodel to make Handicap Accessible	5,000	
Ransom County Food Pantry - Restock Shelves & Freezers	2,500	
Ransom County SADD Organization - Student Self-Defense Class	250	
CHI Health at Home - Home Health & Hospice - Palliative Care Program	5,000	
Lisbon FFA - Cemetery Monuments	6,500	
Lisbon Fire Department - Backup Generator	16,800	
Lisbon Opera House Foundation - N & S Tuckpoint and Sign Repair	15,000	
Lisbon Public School District #19 - Pixellot Camera	2,500	
Ransom County Food Pantry - Thanksgiving and Christmas Holiday Food Baskets	5,000	
Brown Brothers Memorial Recognition Project Fund - Grant remaining spendable to recognition fund	<u>8,109</u>	91,006
Maddock Community Endowment Fund		
Alzheimer's Association MN-ND - Memory Information Toolkits	250	
Benson County Events Center - Ventillation System at Benson County Events Center	1,155	
Benson County Transportation - Garage Build/Office Remodel	1,155	
Feed My Starving Children - Mobile Pack	500	
Lake Region District Health Unit - Benson County	500	
Maddock Community Historical Society - Renovation of historic cottage in city park	1,155	
Maddock Community Library - Preschool Library Connection	350	

Maddock Opera House Association - Harriman Curtain Fund	\$ 1,155		T.A. & Anna Solheim Endowment Fund		
Maddock Economic Development, Inc. - Maddock concession stand	1,155		Domestic Violence Crisis Center, Inc. - Additional Safety	\$ 5,000	
Maddock Public School - Maddock School Playground Renovation Project	<u>1,155</u>	\$ 8,530	Full STEAM Ahead - After School Enrichment	6,000	
McKenzie County Community Foundation			Magic City Blessing Bank - Magic City Blessing Bank	2,477	
Badlands Search & Rescue - BSAR Gear & Training Application 1	500		UND Center for Rural Health - UND R-COOL-Health Scrubs Academy II	<u>2,500</u>	\$ 15,977
Bakken Oil Rush Ministry - Watford City - 7th Annual Christmas Event & Toy Mall	700		Mohall Area Community Foundation		
BIO Girls, Watford City, ND - 2020 Site	1,000		City of Mohall - Mohall Fairgrounds Playground Equipment	1,000	
Bismarck Public Schools - T-4 Tools Trades Torque Tech Growing "New Industry" Opportunities	500		Kenmare Wheels and Meals - Mohall Senior Meal Program	390	
Feed My Starving Children - Watford City MobilePack	500		Mohall Lansford Sherwood School District #1 - STEM/Makerspace	<u>600</u>	1,990
Grassy Butte Quick Response Unit - CPR instructor supplies	800		Mott-Regent Community Foundation & the Ishmael & Rose Diede Charitable Fund for Mott/Regent		
Long X Arts Foundation - Senior Art Outreach	2,000		Mott Park District - Pool Blaster Pro 1500	656	
McKenzie County Imagination Library - Imagination Library Letter Campaign	600		Mott Public Library - Children's Reading and Learning Section Upgrade and Enhancement	1,137	
Pioneer Museum of McKenzie County - Tater Tot's	<u>390</u>	6,990	Mott/Regent Public Schools - Mott Regent Second Floor AED Project	800	
Milnor Community Foundation			Regent Ambulance Service - Bathroom remodel for a handicapped shower room	1,000	
Marketplace of Ideas/Marketplace for Kids, Inc. - Marketplace for Kids - Engaging All Learners		95	Regent Consumers Co-op - Roof Project	<u>2,100</u>	5,693
Dale L. Brown Memorial Fund for Milnor			New England Community Foundation & the Ishmael & Rose Diede Charitable Fund for New England		
City of Milnor - Lift station Backup Power	5,500		Saint Mary's Little Saints Daycare - Outdoor Play Area Upgrade		2,800
City of Milnor - Wildlife Observation Deck Project	1,225		New Rockford Community Foundation		
Lakeview Golf Course Association - Heating & Cooling Efficiency / Bridge Safety	15,000		Community Ambulance Service of New Rockford - Cardiac Ready Community AED	500	
Marketplace of Ideas/Marketplace for Kids, Inc. - Marketplace for Kids - Engaging All Learners	155		battery & defib pad replacement project		
Milnor Area Community Center, Inc. - Handicap accessible and automatic locking front doors	11,175		Lutheran Home of the Good Shepherd - Medical Drug Diversion	300	
Milnor Community Housing, Inc. - Flooring for 2 apartments entryway and hallway	2,560		New Rockford Park District - Outdoor Skating Rink Liner	1,000	
Milnor Fire Department - Milnor Fire Department sign	14,700		City of New Rockford - Centennial Park Restoration	1,500	
Milnor Satellite Club - New Ice Cream Machine	4,864		Women's Auxillary Cemetery Association - Tree Removal and update of Cemetery	<u>700</u>	4,000
Milnor School District - Community Entertainment during the Milnor-DeLamere-Sydna All School Reunion	6,829		New Salem Area Community Foundation		
Milnor School District - School Based Mental Health	7,500		American Legion Post #91 New Salem, ND - U.S. Flags on Main Street & City of New Salem	750	
Youth Opportunity Unlimited, Inc. - Daycare Improvements	<u>17,167</u>	86,676	Morton County Parks - Fish Creek Shelter Repairs	1,350	
Russell F. Brown Memorial Fund for Milnor			New Salem Ambulance Service - Summer Safety	5,000	
City of Milnor - Wildlife Observation Deck	3,000		New Salem Fire Department - Communications	30,993	
City of Milnor - Milnor Main Street Project	25,000		New Salem Park District - Community Movie Night	4,000	
City of Milnor Park District - Baseball Uniforms and Equipment	2,950		New Salem Park District - Patio/Golf Carts	<u>10,000</u>	52,093
City of Milnor Park District - Art in the Park	1,200		Oakes Area Community Foundation		
Lakeview Golf Course Association - Furnace & Duct Work at Golf Clubhouse	8,000		CHI Oakes Hospital Foundation - Community Healthcare Education	500	
Milnor Fire Department - Air Compressor & Pressure Washer	5,550		Dickey County Master Gardener - Healing Garden	1,000	
Milnor Merchants Club - Flowers on Main Street	1,100		Friends of Fine Arts and Academics - Band/Choir acoustical shells for the Oakes Public School	1,500	
Milnor Scholarship Association - 2019 Scholarships	6,000		Guelph Community Development Association, Inc. - Replace Broken Windows	1,000	
Milnor School District - Lego League Milnor Robotics Team	1,500		Hospice of the Red River Valley - Bereavement Program	1,000	
Milnor School District - Playground Equip/ADA Access	20,000		Oakes Area Chamber of Commerce - Main Ave Garland and Wreaths	1,500	
The FBLA Keg - Ice Cream Machine	16,000		Oakes Girl Scout Troop 30010 - Gold Project Award for Megan Rodine and Aubrei Steiner	3,000	
City of Milnor - Wildlife Observation Deck Project	<u>1,275</u>	91,575	Oakes Public School for Oakes Golf Club - Bridge & Irrigation Enhancements	2,757	
Minnewaukan Community Endowment Fund			Oakes / Sargent Central / Ellendale FFA - High Tunnels in Education	1,000	
Lake Region District Health Unit - Benson County	500		Tiny Tornadoes - Individual Cubbies for Personal Belongings	<u>1,000</u>	14,257
Minnewaukan High School Trap Team - Minnewaukan Trap Team	500		Park River Community Endowment Funds		
Minnewaukan Rural Fire Protection District - New Fire Hall	<u>4,452</u>	5,452	City of Park River - Updating the entryway of City Hall	5,000	
Minot Community Endowment Fund			City of Park River - American Legion Coliseum Kitchen Project	5,000	
Companions for Children, Inc. - Lunch Pals: School-Based Youth Mentoring	4,000		Kiddie Korner Preschool & Daycare, Inc. - Appliance & Sign Upgrades	5,000	
Dream Catcher's Baseball, Inc. - Dream Catcher's Baseball, Inc.	3,000		Park River Area Public School - Grants for Chris Rostvet Scholarship	500	
Minot Area Chamber of Commerce - Junior Achievement of Minot	3,000		Park River Area Public School - Wheelchair Lift Replacement	<u>5,000</u>	20,500
Minot Area Homeless Coalition, Inc. - Direct Services	4,000		Parshall Area Community Foundation		
Northern Plains Children's Advocacy Center - Therapy Art/Material Supplies Room	2,500		Arthur Solie American Legion Post 121 - Beautify American Legion Building	2,500	
The Village Family Service Center - Bismarck - Supervised Parenting Time and Child Exchange Program	2,500		Marketplace of Ideas/Marketplace for Kids - Entrepreneurship Industry Technology		
The Welcome Table - Lord's Cupboard Food Pantry	5,000		STEAM - Engaging All Learners	250	
United School District #7 - Elementary Playground Equipment	1,000		Parshall Ambulance Service - ReVel ^Å portable critical care ventilator	3,000	
YWCA Minot - Helping Hand	5,000		Parshall Public Schools - Robotics	2,137	
Magic City Blessing Bank - Magic City Blessing Bank	<u>357</u>	30,357	St. Bridget Catholic Church - Flowering Cemetery	500	
Charles & Madge Westlie Endowment Fund			Van Hook Association - Van Hook Pickle Ball Court	<u>1,000</u>	9,387
Minot Commission on Aging, Inc. - Senior Nutrition Program	5,000		Pierce County Endowment Fund		
Souris Valley United Way - Dolly Parton Imagination Library (DPIL)	4,000		Geographical Center Historical Society - 2020 Summer Kids Programming	1,500	
Magic City Blessing Bank - Magic City Blessing Bank	<u>7,166</u>	16,166	Good Samaritan Hospital Association - Advancing Ambulance Safety Project Rugby	500	
			Marketplace of Ideas/Marketplace for Kids - Engaging All Learners	250	
			Tri-County Senior Meals & Services - Nutrition Services for 60 and older adults	<u>2,000</u>	4,250
			Richardton Area Community Foundation		
			Camp ReCreation, Inc. - Activity Supplies	1,000	

Lt Theo R Zech American Legion Post #180 - Insulating the American Legion club room building	\$ 2,500	
Richardton Baseball Club - Richardton Baseball Field Improvements	3,283	
Richardton Healthcare Foundation - Walk-in tub and wheelchair scale	2,000	
Richardton Senior Citizens Center - Updates to the Building	2,000	
Richardton-Taylor School - National Speech and Debate Association National Tournament	1,383	
St. John Lutheran Church - Furnace replacement	1,917	
St. Mary's Parish - St. Mary Cemetery Flagpoles	<u>1,917</u>	\$ 16,000
Richland/Wilkin Community Foundation		
CAPLP - Lakes and Prairies Community Action - EBT at the Twin Towns Gardeners' Market	1,437	
Mooreton Park Board - Ice skating/hockey rink	1,000	
Southeastern North Dakota Community Action Agency - Individual Emergency Assistance	1,500	
Wyndmere School - Battle of the Books	1,500	
Hankinson Park District - North Park Playground Equipment	1,500	
City of Breckenridge - Pickleball Fences	2,500	
Red Door Art Gallery & Museum - Lights	1,500	
Red Door Art Gallery & Museum - Student Art Show	<u>1,500</u>	12,437
Rolla Community Endowment Fund		
City of Rolla - Purchase Books & Furniture	1,000	
City of Rolla - Rehabilitation of Rolla Public Cemetery	1,000	
Mount Pleasant School District - Upgrade baseball jerseys	1,125	
Rolette County Public Health District - Purchase Portable Room Divider Curtains	1,500	
Rolla Park District - Upgrade the Legion Baseball Field	2,300	
Rolla Volunteer Fire Department - Purchase Tech-Jen Equipment	2,000	
Rolla Elementary School - Upgrade Playground Equipment	<u>1,000</u>	9,925
Rugby Community Endowment Fund		
Geographical Center Historical Society - Benson Law Office Repairs	1,000	
Good Samaritan Hospital Association - Advancing Ambulance Safety Project Rugby	3,000	
Heart of America Germans from Russia - Building Project Signage Needs	3,670	
Pierce County Food Pantry - 2019 Christmas Food Baskets	1,500	
Rugby's Dolly Parton's Imagination Library - Rugby's Dolly Parton's Imagination Library	700	
Rugby Lions - Rugby Lions Music in the Park	1,700	
Rugby Public School District - Purchase of a Majestic Quantum Field Xylophone for the Rugby Instrumental Department	1,500	
Tri-County Senior Meals & Services - Nutrition Services	2,000	
Villa Arts, Inc. - Heartland Civic Choir and Orchestra and Christmas Musical	<u>4,000</u>	19,070
Sherwood/Antler Community Foundation		
Kenmare Wheels and Meals - Sherwood Home Delivery Senior Meal Program	340	
Renville County Gun Club - Purchase Handicap & Safety Signs & Parking Stops for the Renville County Gun Club	<u>340</u>	680
Stanley Area Community Foundation		
Domestic Violence Program NW ND/Action Resource Center - Prevention and Awareness	915	
Mountrail Community Food Pantry - New Shelves	2,545	
Mountrail County Health Foundation - Dare to Define YOU Youth Leadership Program	7,000	
Stanley Community Schools - District - Will Athletic Complex Renovation	35,000	
Stanley High School FFA - Virtual Welder	6,500	
The Sibyl Center for Life Enrichment - Children's Art Experiences (Theatre and Art Contest) and Annual Ladies Day	1,000	
Van Hook Association - Van Hook Pickle Ball Court	5,000	
Stanley Area Community Foundation Non-Endowment Program Fund		
Mountrail Community Food Pantry - Donation from John & Cecilia Enns	100	
Mountrail County Health Foundation - Donation from John & Cecilia Enns	<u>100</u>	58,160
Strasburg Area Community Foundation		
Romanus F. Wagner Post No 6264 Veterans of Foreign Wars - VFW Park Lighting	500	
Strasburg Nursing Home - Emergency Generator Replacement	500	
Strasburg Park Expansion - Rebuild Crows Nest	500	
Strasburg Public School - Graphing Calculators for Upper Level Math	<u>500</u>	2,000
Tioga Community Foundation		
Families and Teachers for Central - Playground beautification	2,000	
Tioga Recreation Council - Tioga Pirate Camps	<u>1,500</u>	3,500
Walhalla Area Community Foundation		
Gorge Arts & Heritage Council - Walla Theatre - New Screen w/Electrical Motor	3,600	
Walhalla Community Hospital Association - Pembilier Nursing Center-Handicap Van		

Replacement Project	\$ 3,600	\$ 7,200
Williston Area Community Foundation		
MonDak Gymnastics Support Group - New windows, door replacement and roof repair		654
Total Local Community Foundation Funds		<u>1,324,884</u>
Scholarship Funds		
Alice Olson Byron Memorial Music Scholarship Fund		
Marly Holmquist		600
Allen Giese Scholarship Fund		
ND FFA Foundation for Scholarships		2,000
American Legion Riders ND District #2 Scholarship		
Peter Vandal		500
Arnold & Dorothy Holm Scholarship Fund		
Reese Owen Johnson	390	
Gracie Johnsrud	<u>390</u>	780
Audrey Doyle Scholarship Fund		
Madison Ann Baumgartner		895
Benjamin Berg Memorial Scholarship Fund		
Jayden Matthew Keller	500	
Steven Kraljic	<u>750</u>	1,250
Bert Rotnem Scholarship Fund		
Bryce Wood	1,500	
Sydney Page Beneda	2,400	
Marissa Jo Sluke	2,000	
Jake Whaley	<u>1,500</u>	7,400
Billings County Scholarship Fund		
Natasha Baranko	363	
Emily Hlebechuk	<u>363</u>	725
Bismarck Rotary Club Scholarship Fund		
Kailey Weigel	1,000	
Kylie Haas	1,000	
Faith Wahl	1,000	
Sydney Sundsbak	1,000	
Rachel Mischel	<u>1,000</u>	5,000
Bismarck Schools Scholarship Fund		
Brycen Just	775	
Kaylee Sailer	<u>775</u>	1,550
Brian Meehl Memorial Scholarship Fund		
Madison Meehl		250
Burton Louis Gewalt Meritorious Fund		
Charles Boldingh	1,000	
Zachariah Haire	1,000	
Lauren Johnson	1,000	
Maxwell Johnosn	1,000	
Dylan Pearson	1,000	
Jake Wendorff	1,000	
Sawyer Gowin	1,000	
Tanner Differding	1,000	
Hunter Gowin	<u>1,000</u>	9,000
Carlyle R. & Eva M. Albrecht Scholarship Fund		
Chanci Kraft		350
Carrington Health Scholarship Fund		
Scholarships		1,170
Chris Traeholt Scholarship Fund		
Steven Weigel		150
Conrad & Arthur Nisstad Memorial Scholarship Fund		
Bridger Bloom	1,420	
Brianna Grandalen	1,420	
Mariah Anderson	1,420	
Brandon Aguirre	1,420	
Christian Cruz-zaun	1,420	
Drew Utke	<u>1,429</u>	8,529
Curtis Stern Memorial Scholarship Fund		

Bryan Hansen		\$	5,000	Talyssa Kvanvig	\$	3,000	
Dawn Marie Stoik Memorial Athletic Scholarship Fund				Ann Gaier		2,000	
Baley Cole			200	Dalton Hanson		4,000	
Donna Maston Charitable Scholarship Fund				Rachel Meyer		4,000	
Anna Dragseth			1,000	Blaire Schnabel		6,000	
Carlton John Turnquist		\$	<u>1,000</u>	Abigail Waloch		2,000	
Dr. Donald P. Miller Memorial Scholarship Fund			2,000	Mary Moen		3,000	
Alex Sebastian Scherr			1,000	Sydney Bork		3,000	
Dr. Henry Springer Scholarship Fund				Dylan Boyer		2,000	
Meghan Ackerman			1,000	Janna Erickson		4,000	
Alexis Andres			1,235	Cassie Podliska		3,000	
Brianna Ashworth			1,000	Andrew Fugleberg		2,000	
Joseph Bates			851	Leah Kienitz		<u>4,000</u>	\$ 57,000
Brendan Berger			851	Dushinske & Jamison Water Resources Scholarship Fund			
Jaren Berger			1,000	Spencer Frith		1,500	
Alison Daniel			851	Brody Bissonette		1,500	
Ayana Freeman			1,000	Mara Jo Roteliuk		<u>1,500</u>	4,500
Isaac Fridrich			851	Edmore High Funding the Future Fund			
Madelyn Gefre			1,000	Sara Hodek		370	
Macy Gress			1,235	Haylee Linstad		<u>450</u>	820
Dafne Hafen			1,000	EllaRae Kelly Memorial Scholarship Fund			
Austin Haider			1,000	Carsen Thorsell			550
Madelyn Hanel			1,000	Ellendale Area Scholarship Fund			
Ethan Hickel			851	Breanna Marie Olson		1,500	
Kelbi Jacobson			851	Katelyn Dathe		<u>500</u>	2,000
Kami Jamgochian			1,000	Ellendale Farmers Union Scholarship Fund			
Isaiah Jilek			1,235	Morgan Barton			1,000
Brendan Johnson			1,000	Emil Nickl Scholarship Fund			
Emily Johnson			1,000	Grace Loegering			435
Lauren Jorda			1,000	Esther Hample Scholarship Fund			
Ashton Kadrmas			1,235	Glory Schettler		600	
Alija Karsky			851	Leah Hoekstra		600	
Cole Kieson			1,235	Jennifer Fergel		<u>1,200</u>	2,400
Aric Knopik			1,235	Fay & Irene Sanders Memorial Scholarship Fund			
Baylee Kram			1,235	Samantha Roehrich			475
Addie Kuehl			1,000	First State Bank of ND Scholarship Fund			
Kaden Kuntz			1,235	Hunter German		467	
Mason Kuntz			851	Andrew Dethlefsen		467	
Isabel Lopez			1,000	Madison Iverson		<u>466</u>	1,400
Hillary Moberg			1,000	Frank & Catharine Hornstein Memorial Music Scholarship Fund			
Hugues Niyimbona			1,000	Landon Rost			200
Madeline Olsen			1,235	Fred & Ida Osmon Scholarship Fund			
Kayla Paluck			851	Cade Majeres			375
Kyra D. Peterson			1,000	Garry Opp Memorial Scholarship Fund			
Rachel Rackov			1,235	Taylor Schall		375	
Dacia Rambousek			1,000	Coy Awender		<u>375</u>	750
Hannah Rathgeber			1,000	George H. Bliven Scholarship Fund			
Kyler Smith			1,000	Matthew Suda			115
Breanna Tessier			851	Gerald W. & Edith F. Wallace Scholarship Fund			
Alanta Tormaschy			1,000	Amanda Mae Vogsland		3,000	
Emma Wahl			1,000	Nathan Zent		<u>3,974</u>	6,974
Alexa Walby			1,235	Grace Taylor Stone Scholarship Fund			
Janessa Welder			1,000	Larimore Public Schools for Scholarships			8,000
Esther Zaina			1,000	Harold Kepler Music Scholarship Fund			
Farrah Zeller			851	Leah Bandy			215
Yevalea Zepeda			1,000	Helen & Ed Leiby Scholarship Fund in Science & Mathematics			
Dayna Zubke			<u>1,000</u>	Breanna Marie Olson			1,770
Dr. Roger E. Meisner Veterinary Medicine Educational Fund			48,946	Helen & Everett Barta Scholarship Fund			
Kylee Nelson			3,000	Megan Demaray			1,525
Peyton Bush			3,000	Hess Corporation College & Career Ready Scholarship Fund			
Krista Erdahl			5,000	Watford City High School for Scholarship			10,000
Shelby Hanson			2,000	Hettinger Class of 1996 Memorial Scholarship Non-Endowment			
Jessica Johnson			2,000	Anna Kludt			250

Holli Kautzman Memorial Scholarship Fund			Andrew Dethlefsen	\$	1,745	
Brooklyn Elizabeth Vollmer		\$ 1,500	Sarah Labuhn		6,000	
Inspired Woman Scholarship Fund			Emily Cox		1,745	
Alyssa Meier		1,000	Madison Iverson		1,745	
Ishmael & Rose Diede Charitable Fund for Scholarships			Taylor Schall		1,745	
Alyssa Berger	\$	800	Samantha Roehrich		1,745	
Chase McCone		1,325	Coy Awender		1,745	\$ 24,440
Garret Soupir		900	Lisa Kraft Memorial Scholarship Fund			
Kristin Schaaf		1,200	Elizabeth Desantis-Miller			500
Alexius Gietzen		1,000	Lloyd & Martha Haas Scholarship Fund			
Elizabeth Kaufman		2,875	Taylor Rae Dalbey		1,100	
Eve Stegner		2,875	Marissa Jo Sluke		1,100	2,200
Collin Wehri		2,600	Lloyd A. Engh North Star Masonic Lodge Fund			
Zachary Schmalenberger		500	Austin Steffen			1,000
Regan Riedlinger		1,915	Margaret Geiger Green Scholarship Fund			
Madison Meier		1,915	Marly Holmquist			300
Braxton Rolle		1,325	Marv Rockstad Memorial Scholarship Fund			
Amber Messer		1,915	Kyla Melland			750
Mason Gerving		1,000	Mary Goldader (Johnson) Memorial Scholarship Fund			
Braden Zuroff		850	Kylee Schmitz			375
J. Garvin Jacobson Scholarship Fund		22,995	Max Zelenak Scholarship Fund			
Dayden Lee Rafferty		585	Madison Iverson		1,175	
James & Winifred Marvin Scholarship Fund			Taylor Schall		1,175	2,350
United Tribes Technical College for Scholarships		2,900	Michigan Scholarship Fund			
Jean A. Argue Scholarship Fund			Paige Pederson			1,000
Emily Kennelly		975	Monroe Scheflo Scholarship Fund			
Jean E. Crabtree Memorial Scholarship Fund			Alexa Lystad			1,000
Lexi Strong		185	Muriel Crabtree Music Scholarship Fund			
Jeff Burgess Memorial Scholarship Fund			Breanna Marie Olson			675
Faith Wahl		1,000	ND Career & Technical Education Endowment Fund			
Jim & Barbara Blaine Scholarship Fund			Tyler Long			500
Logan Lies		900	ND Farmers Union Co-op House Scholarship Fund			
Joan Multhaup Scholarship Fund			Alexius Gietzen		1,000	
Eve Stegner		310	Breanna Marie Olson		1,000	
John & Yvonne Cronquist Midway Scholarship Fund			Sophie Richards		1,000	
Jason Dombrowski		1,000	Aaron Klain		1,000	4,000
Harmony Downer		1,000	ND Farmers Union Scholarship Fund			
Madison Geisinger		545	Michaela Fischer		500	
Jamie Park Thorvilson		1,000	Alexius Gietzen		500	
John Lunde Scholarship Fund		3,545	Hunter Frederick		500	
Emily Kennelly		85	Paige Haakenson		500	
Josephine Garnett Miller Scholarship Fund			Lauren Jorda		500	
John Heuchert		625	Tanner Kempf		500	
Kenneth & Leila Morris Dental Scholarship Fund			Traci Lagein		500	
Ashley Westbee		1,675	Madison Reidman		500	
Derrick Bisnett		1,675	Wyatt Runck		500	4,500
Kirstin Skari Memorial Scholarship Fund			ND Farmers Union-Alan Bergman Scholarship Fund			
Jenna Zavalney		720	Veronica Schwartzenberger			1,000
Kiwanis - Meier Scholarship Fund			ND Military Scholarship Fund			
Sara Berger		150	Ashley Westbee			375
Kyla Morehead Memorial Scholarship Fund			ND Veterinary Medical Association Scholarship Fund			
Breanna Marie Olson		150	Abigail Waloch		411	
LaPlante Family Scholarship Fund			Codi Schaper		730	1,141
Kaleigh DeGeldere		350	ND Veterinary Medical Association Scholarship Non-Endowment Fund			
Larimore Public Schools Scholarship Fund			Shelby Hanson		730	
Scholarships		2,000	Talyssa Kvanvig		350	
Lars & Hilda Svendsgaard Scholarship Fund			Kylee Nelson		350	
Conner Fike		2,990	Mary Moen		730	
McKayla Jones		2,990	Abigail Waloch		319	
Jaye Fike		2,990	Andrew Fugleberg		350	
Leo Billey Memorial Scholarship Fund		8,970	Peyton Bush		350	
Breanna Marie Olson		6,225	Dalton Hanson		730	
Hunter German		1,745	Rachel Meyer		350	

Dylan Boyer	\$ 1,000	\$ 5,259	Bridger Nole Smith	\$ 4,000	
Norman & Bill Erickson "Uffda" Scholarship Fund			Brooke Ann Mogen	4,000	
Koby Marchus		1,000	Jessen Timothy Homiston	4,000	
North Sargent Class of '63 Scholarship Fund			Gracie Johnsrud	4,000	
Carter Anderson	300		Chrissie Treibitz	4,000	
Brady Walth	<u>500</u>	800	Justin Dahl	4,000	
Park River Scholarship Fund			Bridget Joanne Allex	4,000	
Gracyn Cole		550	Nevada Berquist	4,000	
Paulie (Paula) Paul Memorial Scholarship Fund			Braedon Gumke	4,000	
Faith Wahl		275	Kason Kyle Hartel	4,000	
Raider Scholarship Fund			Sydney Faller	4,000	
Elle Goetz	500		Sean Michael Larsen	4,000	
Elijah Vogle	<u>500</u>	1,000	Katie Marie Mogen	4,000	
Ray & Hazel Wuolu Memorial Scholarship			Alli Mae Mogen	4,000	
Madison Iverson		1,000	Lakin Michelle Butler	4,000	
Ray Scholarship Fund			Kendra Dawn Foreman	4,000	
Abigail Hickel		1,250	Garett Louis Nelson	<u>4,000</u>	\$ 192,000
Richard & Christina Fiedler Scholarship Fund			Sally Brash Memorial Scholarship Fund		
Amber Messer		440	Sargent Central Public Schools - Scholarships		10,800
Robert E. Chase Scholarship Fund			Sheila Coleman Memorial Scholarship Fund		
Mandan Public Schools Foundation for Education - Scholarships	5,015		Madison Iverson	750	
Alyssa Berger	250		Samantha Roehrich	<u>750</u>	1,500
Bayle Bertch	315		Sheldon Mizpah Scholarship Fund		
Collin Wehri	<u>250</u>	5,830	Madison Bartholomay		375
Ronald D. Liudahl Scholarship Fund			St. Thomas Masonic Lodge #30 Scholarship Fund		
Morgan Gentzkow		1,000	John Heuchert		475
Rugby High School Alumni Scholarship Fund			Stanley & Julie Buxa Nursing Scholarship Fund		
Kyla Radomski	400		Josie Rae Wicks		350
Jordan Senger	400		The Theo Torgerson Scholarship Fund		
Nathan Livedalen	400		Taylor Rae Dalbey		775
Karsyn Hager	<u>400</u>	1,600	Thomas Whelan Scholarship Fund		
Rupert J. Rehberg Scholarship Fund			John Heuchert		115
Kelly Rae Danielson	4,000		Tiny & Joyce Gebhardt Scholarship Fund		
Grace Angelika Dragseth	4,000		Morgan Barton		225
Jayden Ann Leiseth	4,000		Tom & Ruth Bettenhausen Scholarship Fund		
Anna Dragseth	4,000		Dalton Hanson	400	
Reagan Michael Finsaas	4,000		Rachel Meyer	400	
Gregory Kleppen	4,000		Leah Kienitz	<u>400</u>	1,200
Zanna Rae Lyon	4,000		Tom Sturdevant Scholarship Fund		
Sydney Ryan Sanford	4,000		Noah Skalsky		200
Carson Wayne Cayko	4,000		Travis Allen Hohbein Memorial Scholarship Fund		
Gracie Ruth Dahl	4,000		Grace Mork		500
Jackson James Faller	4,000		U.S. Durum Growers Association Scholarship Fund		
Olivia Gronos	4,000		Jack McCrory		1,000
Cauy Justin Hartel	4,000		UTTC Johnson Scholarship Foundation Endowment Fund		
Kordae Jewell Ann Hartel	4,000		United Tribes Technical College - Scholarships		4,811
Brock Mitcheal Haugeberg	4,000		Victor & Verna Johnson Scholarship Fund		
McKayla Jean Haugeberg	4,000		Taylor Rae Dalbey	2,550	
Mikka Lynn Haugeberg	4,000		Selena Hobbs	<u>2,550</u>	5,100
Reese Owen Johnson	4,000		Total Scholarship Funds		535,880
Carter Silas Knutson	4,000				
Abby Marie McCauley	4,000		Organization Endowment Funds		
Hayley Moe	4,000		Abused Adult Resource Center Endowment Fund - Annual Distribution		1,116
Hunter Michael Nether	4,000		Badlands Ministries Endowment Fund - Annual Distribution		3,646
Linsay Sue Peterson	4,000		Bismarck Art & Galleries Association Endowment Fund - Annual Distribution		450
Jaycie Marie Rau	4,000		Bismarck Prairie Public Television Fund - Annual Distribution		1,580
Emmalee Elizabeth Sims	4,000		Bremer Banks Prairie Public Television Fund - Annual Distribution		2,470
Mackenzie Elaine Sparby	4,000		Catholic Charities North Dakota Endowment Fund - Annual Distribution		2,500
Morgan Mackenzie Stebbins	4,000		Cooperstown Bible Camp Endowment Fund - Annual Distribution		2,211
Carlton John Turnquist	4,000		Esmond Jubilee Endowment Fund - Annual Distribution		395
Bailey Hope Weiskircher	4,000		Fellowship of Christian Athletes North Dakota Endowment Fund - Annual Distribution		651
Carter John Zenz	4,000		FirstChoice Clinic Endowment Fund - Annual Distribution		2,525
Ashley Gail Killion	4,000		FirstChoice Clinic Endowment Fund (BISMARCK) - Annual Distribution		1,425

Gateway to Science Endowment Fund - Annual Distribution	\$	1,939	
Good Samaritan Health Service Fund - Annual Distribution		1,517	
Harvey Public Library Endowment Fund - Annual Distribution		1,371	
HIT, Inc. Endowment Fund - Annual Distribution		821	
Icelandic Park Fund - Annual Distribution		440	
Icelandic State Park Centennial Project Endowment Fund - Annual Distribution		12,525	
Icelandic State Park Heritage Building Endowment Fund - Annual Distribution		3,625	
Kalloch Eunice Gronvold House Endowment Fund - Annual Distribution		1,133	
Leach Library Fund - Annual Distribution		495	
Lisbon Public Library Fund - Annual Distribution		566	
Little Flower Fund - Annual Distribution		1,025	
Little Flower Fund II Fund - Annual Distribution		1,105	
Lord of Life Lutheran Church Endowment Fund - Annual Distribution		4,991	
Marlowe Ann Regan Endowment Fund - Annual Distribution		265	
Martin's Lutheran Church Endowment Fund - Annual Distribution		6,274	
Missouri Slope Areawide United Way Endowment Fund - Annual Distribution		35,654	
Morton Mandan Public Library Endowment Fund - Annual Distribution		1,215	
ND Real Estate Educational Fund - Legal Hotline Support		4,000	
New Town Health Support Corporation Endowment Fund - Annual Distribution		745	
North Dakota FFA Foundation Endowment Fund - Annual Distribution		1,074	
Northwood Deaconess Health Center Endowment - Annual Distribution		445	
Oberon "55" Club Endowment Fund - Annual Distribution for Maintenance of Community Center		600	
Pembina County Historial Society Fund - Annual Distribution		3,491	
Pioneer School Endowment Fund - Annual Distribution for Upkeep at Pioneer School		736	
Prairie Public TV Endowment Fund - Annual Distribution		5,650	
Red Willow Ministries Endowment Fund - Camper Scholarships		1,020	
Ruth Meiers Hospitality House Endowment Fund - To support former Ruth Meiers Hospitality House project in Bismarck		3,355	
Sacred Heart Benedictine Foundation Endowment Fund - Annual Distribution		1,550	
Skuli Pall Benedictson Endowment Fund - Annual Distribution		3,600	
Souris Valley United Way-Molly Wallin Endowment Fund - Annual Distribution for Program Support		15,000	
St. Anthony's Church Endowment Fund - Annual Distribution		1,300	
The Bismarck Library Foundation, Inc. Endowment Fund - Annual Distribution		3,368	
Volunteer Caregivers for the Elderly Endowment Fund - Annual Distribution		213	
Total Organization Funds		140,077	

School Funds

Alexander Public School Foundation Fund			
Scholarship for Engineering Camp - Tayla Ybarra	\$	250	
Scholarship for Medical Camp - Coryanna Turnquist		250	
Alexander Comets Youth Wrestling Club - Floor Mats		1,000	
Tetrix/FTC Team		1,250	
Shop Engraver		10,000	12,750
Grenora Public School Foundation Fund			
Grenora Public School		1,917	
Past Electricity on Community Event Sign		540	
Purchase of Band Instruments, Portion of Flute & Trombone		1,500	3,957
Lidgerwood Public School Project Non-Endowment			
Lidgerwood Childcare Committee Start-Up Costs		5,000	
Renovation of Building for Childcare Facility		13,000	18,000
McKenzie County Public School Dist #1 Foundation Fund Non-Endowment			
Purchase of School Equipment			2,910
McKenzie County Public School Foundation Dist #1 Academic Project Fund			
STEM Robotics Equipment			4,850
Northern Cass Education Foundation			
Desk, Acoustic Guitars, Tables & Chairs and Lego Robot Kit			3,071
Wolford Public School Fund Non-Endowment			
Leeds Public School		314	
Rolette Public School		1,141	
Rugby Public School District		1,456	2,912
Total School Funds			48,449

Restricted Funds

Adolph E. Shirley Memorial Endowment Fund			
Anne Carlsen Center	\$	975	
Concordia College - Moorhead		975	
Salvation Army		1,949	
St. Aloisius Medical Center		975	
Vang Church & Cemetery Care Fund		975	\$ 5,849
Alphonse & Loretta Hiltner Endowment Fund			
St. Alphonsus Catholic Church		1,405	
St. Alphonsus School Foundation		1,406	2,811
Anne Carlsen Center for Children Endowment Fund			
Anne Carlsen Center			30,000
Art & Esther Emerson Endowment Fund			
Chaseley Methodist Church			6,625
Arthur Moore Fund			
Back to the Bible		3,194	
Dallas Theological Seminary		3,194	
Fuller Theological Seminary		3,194	
Liberty University		3,194	12,775
Brinsmade Lutheran Church Cemetery Fund			
Brinsmade Lutheran Cemetery			590
Clarence & Ardeen Sveum Exhibit Fund			
Bonanzaville, USA			34,842
Connie Wold Wellness Foundation			
Scholarship - Mackenzie Elaine Sparby		600	
Scholarship - Brooke Ann Mogen		500	
Scholarship - Sydney Ryan Sanford		500	
Scholarship - Lindsay Sue Peterson		500	
Scholarship - Morgan Mackenzie Stebbins		500	
Scholarship - Rio Shae Elliot		500	3,100
Donald J. Rupp Endowment Fund			
Geographical Center Historical Society		544	
Munich High School		435	
Rugby High School		435	
Salem Mennonite Cemetery		108	
St. Paul Lutheran Church		544	
Zion Lutheran Church Cemetery		108	2,174
Donor Advised Funds			
Various Recipients			1,410,498
Dorothy D. James - Camp Grassick Fund			
Camp Grassick			215
Ellendale Healthcare Fund			
Ellendale Community Ambulance - Hypothermia Equipment		3,500	
Prince of Peace Care Center - Providing All Easy Access & Care		170	3,670
Elmer & Lucille Hoffert Medical Research Fund			
UND Foundation - Heart Disease Research		738	
UND Foundation - Cancer Research		738	1,475
Fort Stevenson Foundation Endowment Fund			
Better Living for Garrison			7,071
Francis Fitzsimonds Endowment Fund			
Park Center Cemetery Association		235	
St. Joseph Catholic Cemetery Association		469	
Walhalla Catholic Cemetery Association		714	
Walhalla Hillside Cemetery Association		714	2,132
Fred & Ida Osmon Endowment Fund - Ryder/Garrison			
Ryder Happy Hour Senior Citizens			327
Gardar Cemetery Endowment Fund			
Gardar Cemetery Association			3,000
Garnett House Fund			
Garnett House - St. Thomas Preservation Society			425
Genevieve Tamerius Fund			
St. Leo's Catholic Church			175
Goshen - Moravian Cemetery Fund			

Goshen Cemetery Association	\$	435	Nelson County Health Services Foundation Endowment Fund		
Harold & Eva Williams Memorial Fund			Nelson County Health Services Foundation	\$	456
Wing Rural Ambulance		475	Nick & Anna Logosz Memorial Fund		
Harris P. Kenner Memorial Fund			St. John the Baptist Ukrainian Catholic Church		850
Leeds Ambulance Service	\$	563	Non-Endowment Funds Grants		
Leeds Rural Fire Protection District		563	Various Recipients		311,827
Maddock Ambulance Service, Inc		563	North Dakota Community Foundation Disaster Relief Non-Endowment Fund		
Maddock Rural Fire Protection District		<u>563</u>	Lutheran Social Services of ND - Flood Relief Funds		100,570
Historic Aadalen Church & Cemetery Fund			North Dakota Conservation Foundation		
Aadalen Lutheran Church Cemetery		315	North Dakota Grazing Lands Coalition		8,500
James & Anne Ryan Memorial Fund			North Dakota Golf Foundation		
Catholic Charities ND - for Pregnancy Services		6,867	ND Golf Foundation		3,725
Catholic Charities ND - for Propagation of Faith		1,597	Northeast Regional Education Fund		
Catholic Charities ND - for Celebration of Marriage		4,312	Grafton Educational Foundation - Purchase playground equipment for Century Elementary		741
Minot Catholic Schools		1,597	Parkinson Wellness Programming Fund		
University of Mary		<u>1,597</u>	Missouri Valley Family YMCA - Staff Training		800
Jim Hurkes Scholarship Fund			Saddle Club Arena Complex: Killdeer Fund		
Central Dakota Children's Choir		565	Killdeer Saddle Club for building materials		100,000
John & Jean Rouzie Endowment Fund			Sam Tolchinsky Endowment Fund		
Anne Carlsen Center		1,595	The American Legion - Scholarships		300
John D. Kelly Endowment Fund			Singh Family Endowment Fund		
Legal Services of ND - Support of John D. Kelly Internships		1,727	Hazen Area Dollars for Scholars	\$	1,275
John H. & Helene Mac Donald Endowment Fund			Mercer McLean Counties Commission on Aging		1,275
Dakota Boys And Girls Ranch Foundation		200	Salvation Army		<u>1,725</u>
Domestic Violence & Rape Crisis Center - Dickinson		200	Sons of Norway, Sverdrup Lodge #107 Endowment Fund		
Evangelical Lutheran Church in America		200	Scholarships to Trollfjorden Camp & Sponsorship of Norwegian Band for Concert in Bismarck		905
ND Chapter-Nature Conservancy		154	St. Patrick's Catholic Cemetery Endowment Fund		
Salvation Army		200	St. Patrick's Church		515
St. John Lutheran Church ELCA		665	St. Peter's Centennial Fund		
St. Joseph's Hospital Foundation		<u>154</u>	St. Peter's Lutheran Church		450
Julius & Alta Burzloff Endowment Fund			St. Thomas City Cemetery Endowment Fund		
Burleigh County Senior Adults Program - Health Services Program		2,473	St. Thomas City Cemetery Association		779
Trinity Lutheran Church - Memorial Alter Flowers & Radio Broadcasts		<u>2,473</u>	Stony Lake Cemetery Fund		
Laurel & Betty Koehn Family Charitable Endowment Fund			Stony Lake Cemetery Association		565
Immanuel Redeemer Lutheran Church Cemetery Association - Cemetery Maintenance		1,150	Susanne Delaney Mattheis Charitable Fund		
Cavalier County Emergency Food Pantry Inc		2,915	Bismarck Art & Galleries Association		6,389
Missouri Synod Lutheran Church		<u>2,915</u>	Bismarck/Mandan Symphony Orchestra		6,389
Lebanon Church Cemetery Fund			Bismarck State College Foundation		6,389
Lebanon Cemetery Association		517	Cathedral of the Holy Spirit		6,389
Leeds Lutheran Church Cemetery Fund			Sanford Health Foundation		6,389
Leeds Lutheran Cemetery		550	The Bismarck Public Library Foundation, Inc		6,389
Leon Dubourt Charitable Non-Endowment Fund			University of Mary		<u>6,389</u>
Gorge Arts & Heritage Council		17,052	Thomas B. & Anna Jane Regan Fund		44,723
Leon Dubourt Gorge Arts Council Endowment Fund			Missouri Slope Areawide United Way		46
Gorge Arts & Heritage Council		2,009	Tioga Swimming Pool Fund		
Mary Ann Pecka Memorial Fund			Tioga Park District		1,113
St. Mark's Catholic Cemetery Association		425	Valentine F. Brossart Memorial Fund		
Mary E. Finley Endowment for Seniors of Walsh County Fund			Little Flower Church		525
Walsh County Heritage Village - To install handicapped accessible entrances on the theater building		1,397	Valley Grove Cemetery Endowment Fund		
Mary G. Wiltse Memorial Endowment Fund			Valley Grove Cemetery Association		<u>145</u>
Lisbon Public School District #19 - Scholarship to Bailey Boehler		1,450	Total Other Funds with Donor Restrictions		2,198,199
Maurice & Sharon Lardy Family Fund					
Home on the Range		440	Total Grants Paid 2019	\$	<u>4,400,982</u>
Meadows Memorial Fund					
Carrington Health Center		18,125	Less: Internal Transfer Contributions		(29,455)
Mike & Dorothy Dolan Minot Commission on Aging Endowment Fund					
Minot Commission on Aging, Inc		1,623	Total Grants Paid 2019	\$	4,371,527
Mike F. Dolan Minot Rotary Club Fund					
Minot Area Community Foundation		7,675	Charitable Project and Program Expenses Paid 2019		191,867
Minnewaukan Cemetery Fund					
Minnewaukan Cemetery Association		155	Total Charitable Grants and Expenditures - 2019		4,563,394
Minnewaukan Evangelical Lutheran Cemetery Fund / St. Peter Cemetery Fund					
Minnewaukan St. Peter Cemetery Association		190			

The North Dakota Community Foundation

Schedule of Endowment Net Assets by the Type of Fund

Year Ended December 31, 2019

(* Denotes New Fund)

NDCF Statewide Greatest Needs & Field of Interest Fund

Alphonse & Loretta Hiltner Fund	\$ 15,618
Arthur Moore Unrestricted Fund	593,271
Atwood-Larson Company Fund	7,458
B.C. Gamble Foundation Fund	28,789
Basin Electric Fund	2,722
Bush Foundation Fund	426,427
Carl & Dorothy Fischer Endowment Fund	1,750
CBP Fund	17,002
Charles Stewart Mott Foundation Fund	186,175
Child & Family Services Fund - William O. Haugen Estate	203,890
Clinton R. Ottmar Memorial Fund	12,712
Coalition for Impaired Health Professionals Fund	8,459
Dain Kalman Quail Fund	181
Dan & Mary Liberda Endowment Fund	1,718
Deluxe Check Printers Fund	21,462
Directors Fund	115,861
Don & Sylvia Schmid Fund	8,216
E. J. Lander Fund	181
Eagles #2614 - Devils Lake Fund	181
Eight Mile School District #6 Foundation Fund	118
Farmers St. Bank - Maddock Fund	454
Fern Christenson Unrestricted Endowment Fund	341,344
First National Bank - Grand Forks Fund	1,815
Frank O. Becker Endowment Fund	215,703
George & Diane Cox Unrestricted Fund	3,621
Gilbert Schmidt Unrestricted Fund	323
Grain Terminal Foundation Fund	10,356
Gulf Oil Corporation Fund	7,454
Harry & Merle Stephenson Fund	589,597
Henry & Selma Lundene Endowment Fund	136,145
Interstate Seed & Grain Fund	6,442
James C. Jensen Fund - Anonymous Fund #1	8,638
Joseph A. Anderson Unrestricted Fund	8,615
Joseph Imberman Fund	181
Joseph M. Powers Fund	726
Judge Harold M. & Harriet T. Hager Memorial Fund	20,483
Linda Steve Charitable Fund	1,858
Marie Almlie Music Unrestricted Fund	1,365
Mary J. Lamb Trust Fund	23,677
Montana Dakota Utilities Fund	48,391
Nash Foundation Fund	1,616
ND Bremer Banks Fund	186,175
ND Womens Foundation	106,847
Otto Bremer Foundation Children & Family Services Fund	113,040
Otto Bremer Foundation Fund	187,687
Piper Jaffray Hopwood Fund	1,815
Porter Brothers Fund	3,630
Provident Life Insurance Company Fund	1,815
Singh Family Unrestricted Endowment Fund	110,825
Smith Investment Company Fund	9,268
Soo Line Railroad Fund	95,702
St. Paul Companies Fund	83,749
T.A. Solheim Fund	5,013

Technical Assistance Endowment Fund	\$ 1,373
The Constance A. Boler Memorial Fund	101,938
Torrey & Lillian Peterson Endowment Fund	1,750
Unrestricted Fund	71,415
Valerie Bren Memorial Fund	14,701
Valley Bank - Grand Forks Fund	2,722
Wayne J. & Magdalen R. Roberts Unrestricted Fund	506,314
Total NDCF Statewide Greatest Needs & Field of Interest Funds	4,686,773

Local Community Foundation Endowment Funds

Adams County Community Foundation	43,361
Anamoose Area Community Foundation	253,004
Ashley Community Endowment Fund	531,313
Bismarck/Mandan Community Foundation	\$ 1,855,521
Glenn & Helen Sorlie Memorial Fund	65,749
Bottineau Community Endowment Fund	52,307
Bowman/Slope Community Foundation	201,736
Carrington Community Endowment Fund	530,019
McGinn-Kunkel Estate Fund	69,546
Casselton Community Endowment Fund	567,452
Cavalier Community Foundation	190,392
Clarence Johnson & Eunice Iwen Community Foundation for Arthur, ND	6,560,876
Cooperstown Community Foundation	333,837
Dickinson Area Community Foundation	49,091
Drayton Area Community Foundation	121,261
Ellendale Area Community Foundation	676,888
Bill & Leona Meyer Fund	29,598
Ellendale Healthcare Fund	98,319
Emerado Community Endowment Fund	32,295
Enderlin Area Community Endowment Fund	135,655
Fairmount Community Endowment Fund	94,495
Finley Community Endowment Fund	261,268
Galesburg Area Foundation	111,307
Garrison Area Community Foundation	146,350
Glen Ullin Area Community Foundation	237
Ishmael & Rose Diede Charitable Fund for Glen Ullin	150,246
Golden Valley County Community Foundation	96,480
Grafton Community Foundation	159,071
Harry & Merle Stephenson Memorial Fund	235,709
Sig Jagielski Memorial Fund	863,994
Hankinson Community Endowment Fund	39,069
Hannaford Area Community Foundation	83,532
Harvey Area Community Foundation	214,004
Hatton Area Community Foundation	53,404
Hazelton-Moffit-Braddock Uncle "T's" Community Foundation*	27,625
Hebron Community Foundation	365
Ishmael & Rose Diede Charitable Fund for Hebron	150,227
Hillsboro Community Foundation	217,487
Hope Area Community Foundation	450,682
Hurdsfield Community Endowment Fund	182,121
Jamestown Community Foundation	299,249
Kenmare Area Community Foundation	198,578
Killdeer Area Community Foundation	88,166
Kindred Area Community Foundation	153,189
Larimore Community Endowment Fund	430,634
Charles D. McCanna Fund	181,130
Vernon & Lila Halvorson Endowment Fund	7,689
Lisbon Community Endowment Fund	872,062
Dale L. Brown Memorial Fund for Lisbon	2,388,042
Russell F. Brown Memorial Fund for Lisbon	2,487,574
Maddock Community Endowment Fund	5,747,678
McKenzie County Community Foundation	235,334
Mercer County Community Endowment Fund*	265,211
	105

Milnor Community Foundation	\$ 21,087	
Dale L. Brown Memorial Fund for Milnor	2,391,573	
Russell F. Brown Memorial Fund for Milnor	<u>2,483,780</u>	\$ 4,896,440
Minnewaukan Community Endowment Fund		144,104
Minot Community Endowment Fund	812,939	
Charles & Madge Westlie Endowment Fund	431,962	
T.A. & Anna Solheim Endowment Fund	<u>479,024</u>	1,723,925
Mohall Area Community Foundation		67,342
Mott-Regent Community Foundation	276	
Ishmael & Rose Diede Charitable Fund for Mott/Regent	<u>150,290</u>	150,567
New England Community Foundation	4,791	
Ishmael & Rose Diede Charitable Fund for New England	<u>153,111</u>	157,902
New Rockford Community Foundation		128,865
New Salem Area Community Foundation		1,401,098
Oakes Area Community Foundation		488,729
Park River Community Endowment Fund	593,473	
Chris Rostvet Memorial Fund	<u>7,642</u>	601,115
Parshall Area Community Foundation		281,693
Larry J. Wilwant Fund for Pembina, ND		1,061,480
Pierce County Endowment Fund		112,318
Powers Lake Community Foundation*		19,911
Richardton Area Community Foundation		454,348
Richland/Wilkin Community Foundation	504,059	
Elmer & Lucille Hoffert Fund	<u>48,442</u>	552,501
Rolla Community Endowment Fund		300,595
Rugby Community Endowment Fund		534,903
Sherwood/Antler Community Foundation		28,666
Stanley Area Community Foundation		1,864,726
Strasburg Area Community Foundation		67,500
Tioga Community Foundation		122,829
Towner County Community Foundation		18,242
Walhalla Area Community Foundation		190,306
Westhope Area Community Foundation		70,591
Williston Area Community Foundation		22,498
Wishek Area Community Foundation		<u>17,279</u>
Total Local Community Foundation Endowment Funds		39,023,332

Scholarship Endowment Funds

Alfred Klewin Scholarship Fund		6,699
Alice Olson Byron Memorial Music Scholarship Fund		20,543
Allen Giese Scholarship Fund		78,300
Arnold & Dorothy Holm Scholarship Fund		21,588
Audrey Doyle Scholarship Fund		27,589
Barbara Beach Study Abroad Scholarship Fund		38,202
Benjamin Berg Memorial Scholarship Fund		61,236
Billings County Scholarship Fund		21,715
Bismarck Rotary Club Scholarship Fund	193,382	
Carole Bordenkircher Kralicek Scholarship Fund	<u>14,642</u>	208,024
Bismarck Schools Scholarship Fund	52,813	
Alton Carl Wolfer Memorial Scholarship Fund	5,405	
Chris Traeholt Scholarship Fund	5,070	
Edgar Bollinger Scholarship Fund	4,435	
Guy Larson Scholarship Fund	5,131	
Harold Kepler Music Scholarship Fund	10,023	
Jim & Barbara Blaine Scholarship Fund	26,823	
Kathy Eggmann Memorial Scholarship Fund	2,334	
Lisa Kraft Memorial Scholarship Fund	18,623	
Paulie (Paula) Paul Memorial Scholarship Fund	9,952	
Robert C. Peske Memorial Scholarship Fund	1,935	
Tom Sturdevant Scholarship Fund	<u>6,576</u>	149,118
Bob Campbell Scholarship Fund		13,165
Burton Louis Gewalt Meritorious Fund		275,214
Calvin Andrist Scholarship Fund		17,476

Carlyle R. & Eva M. Albrecht Scholarship Fund		\$ 10,671
Carrington Health Scholarship Fund		34,936
Clarence Johnson/Eunice Iwen Scholarship Fund		39,217
Cody Feist Memorial Scholarship Fund		10,863
Conrad & Arthur Nisstad Memorial Scholarship Fund		307,733
Curtis Stern Memorial Scholarship Fund		158,112
Dean & Eleanor Miller Memorial Scholarship Fund		18,591
Dick & Dean Bultema Scholarship Fund		14,297
Donald and Irene Metzen Scholarship Fund		56,472
Donald B. Sass Scholarship Fund		31,154
Dr. Donald P. Miller Memorial Scholarship Fund		30,442
Dr. Henry Springer Scholarship Fund		1,408,815
Dr. Roger E. Meisner Veterinary Medicine Educational Fund		1,741,973
Dushinske & Jamison Water Resources Scholarship Fund		128,725
Einar & Helma Septon Scholarship Fund		18,404
Ellendale Area Scholarship Fund	\$ 83,911	
Helen & Ed Leiby Scholarship Fund in Science & Mathematics	81,721	
Kyla Morehead Memorial Scholarship Fund	5,045	
Tina & Joyce Gebhardt Scholarship Fund	<u>22,755</u>	193,432
Elvine Sondreaal Septon Fund		13,542
Emil Nickl Scholarship Fund		13,685
Esther Hample Scholarship Fund		40,159
Fay & Irene Sanders Memorial Scholarship Fund		15,450
Frank & Catharine Hornstein Memorial Music Scholarship Fund		6,088
Frank & Emilie Blasl Memorial Scholarship Fund		6,965
Fred & Henrietta Kerian Memorial Scholarship Fund		10,228
Fred & Ida Osmon Scholarship Fund		11,240
Gerald W. & Edith F. Wallace Scholarship Fund		439,247
Grafton Scholarship Funds		
Bert Rotnem Scholarship Fund	204,724	
George H. Bliven Scholarship Fund	3,623	
Jay Fagerholt Endowment Fund	22,126	
Kiwanis - Meier Scholarship Fund	4,516	
LaPlante Family Scholarship Fund	10,366	
Noela Kingsbury Memorial Scholarship Fund	<u>5,174</u>	250,529
Helen & Everett Barta Scholarship Fund		47,283
Holli Kautzman Memorial Scholarship Fund		91,235
Ishmael & Rose Diede Charitable Fund for Scholarships		614,643
James & Winifred Marvin Scholarship Fund		104,927
Jean E. Crabtree Memorial Scholarship Fund		5,852
Jeff Burgess Memorial Scholarship Fund		32,425
J. Garvin Jacobson Scholarship Fund		18,057
Joan Multhaup Scholarship Fund		11,512
John E. Conneran Memorial Scholarship		38,088
John J. Ayash Scholarship Fund		9,972
John & Yvonne Cronquist Midway Scholarship Fund		109,374
Kenneth & Arline Lueck Scholarship Fund*		90,229
Kenneth & Leila Morris Dental Scholarship Fund		106,816
Kirstin Skari Memorial Scholarship Fund		22,268
Kyle Binstock Memorial Scholarship Fund		12,488
Larimore Public Schools Scholarship Fund	61,833	
Dawn Marie Stoik Memorial Athletic Scholarship Fund	6,293	
EllaRae Kelly Memorial Scholarship Fund	17,171	
Grace Taylor Stone Scholarship Fund	304,381	
Lloyd A. Engh North Star Masonic Lodge Fund	<u>21,953</u>	411,630
Lars & Hilda Svendsgaard Scholarship Fund		239,637
Leo Billey Memorial Scholarship Fund		650,617
Les Melroe Gwinner Scholarship Fund		28,767
Lisbon Scholarship Funds		
Harold & Eldeane Johnson Scholarship Fund	45,757	
Lewis Lilyquist Scholarship Fund	11,125	
Lisbon Dollars For Scholars Fund	<u>31,290</u>	88,172
Margaret Geiger Green Scholarship Fund		9,563

Marv Rockstad Memorial Scholarship Fund	\$	23,080	
Mary Goldader (Johnson) Memorial Scholarship Fund		12,112	
Michigan Scholarship Fund		78,737	
Minot Kiwanis Scholarship Fund		20,249	
Monroe Scheflo Scholarship Fund		28,500	
Muriel Crabtree Music Scholarship Fund		20,866	
Muriel R. Hyden Memorial Scholarship Fund		19,983	
ND Career & Technical Education Endowment Fund		23,244	
NDCF/ND Nurses Association Scholarship Fund		102,814	
ND Farmers Union-Alan Bergman Scholarship Fund		143,746	
ND Farmers Union Co-op House Scholarship Fund		160,519	
ND Farmers Union Scholarship Fund		132,811	
ND Military Scholarship Fund		11,481	
ND Veterinary Medical Association Scholarship Fund		36,976	
North Dakota Nurse Practitioner Association Scholarship Fund		56,504	
North Sargent Class of '63 Scholarship Fund		12,518	
Oakes Scholarship Funds			
First State Bank of ND Scholarship Fund	\$	52,838	
Max Zelenak Scholarship Fund		71,641	
Oakes VFW Scholarship Fund		22,250	
Rick & Nancy Warner Bigler Scholarship Fund		10,756	157,485
Park River Scholarship Fund		17,021	
Lloyd & Martha Haas Scholarship Fund		67,301	
Victor & Verna Johnson Scholarship Fund		137,247	221,569
Ray & Lillian Gulbranson Scholarship Fund			30,710
Ray Scholarship Fund			41,404
Richard & Christina Fiedler Scholarship Fund			13,357
Robert E. Chase Scholarship Fund			171,029
Ronald D. Liudahl Scholarship Fund			31,391
Rugby High School Alumni Scholarship Fund			52,713
Rupert J. Rehberg Scholarship Fund			6,732,819
Sally Brash Memorial Scholarship Fund			295,892
Sheldon Mizpah Scholarship Fund			12,472
Stanley & Julie Buxa Nursing Scholarship Fund			10,491
St. Thomas Scholarship Funds			
St. Thomas Masonic Lodge #30 Scholarship Fund		14,210	
Jean A. Argue Scholarship Fund		29,361	
John Lunde Scholarship Fund		2,839	
Josephine Garnett Miller Scholarship Fund		19,333	
Thomas Whelan Scholarship Fund		3,642	
Victor & Louise Dusterhoft Scholarship Fund		1,953	
William Born Scholarship Fund		15,522	86,859
Sue Podenski Scholarship Fund			7,271
The Theo Torgerson Scholarship Fund			24,018
Timothy T. & Frances White Scholarship Fund*			101,315
Tom & Ruth Bettenhausen Scholarship Fund			82,150
Travis Allen Hohbein Memorial Scholarship Fund			12,791
Tyler Herman Memorial Scholarship Fund			5,683
UTTC Johnson Scholarship Foundation Endowment Fund			343,452
Total Scholarship Endowment Funds			18,012,405

School Endowment Funds

Carrington Public School Fund*		6,214	
Fessenden-Bowdon Public School Foundation		1,382	
Kulm Public School Foundation Fund		35,068	
Lidgerwood Public School Foundation		206,567	
Lisbon Public Schools Endowment Fund		81,999	
Northern Cass Education Foundation		79,981	
Oakes Public School Endowment Fund		22,774	
Oakes Public Schools Music Booster Fund		26,691	
Our Redeemer School Endowment Fund		13,163	
Park River Area Education Foundation - Endowment*		5,142	
Ray-Nesson Public School Endowment		150,644	
Richardton-Taylor Public School Endowment		5,787	

Stanley Community Schools Foundation*	\$	90,978	
Underwood, ND School Foundation Endowment Fund*		23,077	
Wahpeton Alumni Foundation*		881	
Total School Endowment Funds			750,347

Organization Funds

ABLE, Inc. Endowment Fund		56,046	
Abused Adult Resource Center Endowment Fund		40,299	
Alpha Opportunities Endowment Fund		5,516	
Ashley Public Library Endowment Fund		4,807	
Badlands Ministries Endowment Fund		151,581	
Bethel Church Endowment Fund*		52,573	
Bethel Lutheran Church Endowment Fund		22,021	
Bismarck Art & Galleries Association Endowment Fund		12,357	
Casselton Parks & Recreation Endowment Fund		131,075	
Catholic Charities North Dakota Endowment Fund		135,355	
Cooperstown Bible Camp Endowment Fund		256,275	
Dickinson Rotary Charitable Fund		35,549	
Ellendale Public Schools Foundation Fund		143,868	
Enderlin Museum Endowment Fund		57,536	
Entertainment, Inc. Fund		3,578	
Esmond Jubilee Endowment Fund		10,628	
Farm Rescue Foundation		86,927	
Fellowship of Christian Athletes North Dakota Endowment Fund		18,457	
First Care Health Center Endowment Fund		270,778	
FirstChoice Clinic Endowment Fund		93,767	
FirstChoice Clinic Endowment Fund (BISMARCK)		56,052	
Gateway to Science Endowment Fund		143,339	
Good Samaritan Health Service Fund		42,634	
Harvey Public Library Endowment Fund		128,121	
Heart of America Germans from Russia Endowment Fund*		15,586	
Herb Boswau Memorial Professional Development Grant Fund		11,854	
Historic Elmwood Endowment Fund		15,111	
HIT, Inc. Endowment Fund		22,923	
Humanities North Dakota Endowment Fund		16,365	
Icelandic State Park Funds			
Icelandic Park Fund	\$	11,859	
Icelandic State Park Centennial Project Endowment Fund		338,766	
Icelandic State Park Heritage Building Endowment Fund		98,049	
Skuli Pall Benedictson Endowment Fund		97,633	546,307
Jeremiah Program Fargo Moorhead Scheel Barry Endowment			233,659
Kalloch Eunice Gronvold House Endowment Fund			30,014
Leach Library Fund			13,174
Linton Hospital Endowment Fund			52,569
Lisbon Public Library Fund			15,459
Little Flower Fund			27,196
Little Flower Fund II Fund			30,470
Lord of Life Lutheran Church Endowment Fund			200,582
Mandan Presbyterian Church Endowment Fund			30,598
Martin's Lutheran Church Endowment Fund			250,834
McKenzie County Health System Endowment Fund			18,201
Missouri Slope Areawide United Way Endowment Fund		1,555,704	
Marlowe Ann Regan Endowment Fund		7,839	
Thomas B. & Anna Jane Regan Fund		1,307	1,564,850
Morton Mandan Public Library Endowment Fund			36,223
ND Center for the Book Fund			3,398
ND Real Estate Educational Fund			168,272
New Town Health Support Corporation Endowment Fund			21,273
North Dakota FFA Foundation Endowment Fund			30,564
North Dakota Teen Challenge Endowment Fund			97,143
Northwood Deaconess Health Center Endowment			11,944
Oberon "55" Club Endowment Fund			15,924
Pembina County Historical Society Fund		97,937	

Cavalier Jail/Library Building Endowment Fund	\$ 2,267	
St. Anthony's Church Endowment Fund	<u>36,764</u>	\$ 136,968
Pioneer School Endowment Fund		19,753
Pioneer Square Endowment Fund		30,075
Prairie Learning Center Endowment Fund	25,617	
Mischelle C. Timmins Fund	<u>22,283</u>	47,900
Prairie Public TV Endowment Fund	150,497	
Bismarck Prairie Public Television Fund	41,954	
Bremer Banks Prairie Public Television Fund	<u>65,746</u>	258,197
Preservation North Dakota Endowment Fund		5,471
Pride, Inc. Endowment Fund		159,518
Red Willow Ministries Endowment Fund		122,502
Richardton Health Center Foundation Endowment Fund		36,222
Rural Leadership ND Alumni Foundation		15,589
Ruth Meiers Hospitality House Endowment Fund		115,186
Sacred Heart Benedictine Foundation Endowment Fund		61,350
Sitting Bull College Endowment Fund	98,973	
Sitting Bull College Scholarship Fund	<u>2,909</u>	101,882
Souris Valley United Way-Molly Wallin Endowment Fund		431,983
The Bismarck Library Foundation, Inc. Endowment Fund		88,849
Turtle Mountain Environmental Learning Center Fund		5,407
United Tribes Technical College Endowment Fund		243,493
United Way Dickinson Endowment		17,040
Vision West ND Endowment Fund		218,209
Volunteer Caregivers for the Elderly Endowment Fund		6,106
Washburn Volunteer Ambulance Service Endowment Fund		59,322
Young Life North Dakota Funds		
Young Life North Dakota (Bismarck) Fund	94,903	
Young Life North Dakota (Native) Fund	<u>54,846</u>	149,749
Total Organization Endowment Funds		7,770,403

Restricted Endowment Funds

Adolph E. Shirley Memorial Endowment Fund		154,624
Alice Baer Memorial Foundation		39,732
Alphonse & Loretta Hiltner Endowment Fund		75,237
Alvin H. Kenner - Leeds Area Historic Cemetery Funds		
Antiochia Lutheran Cemetery Fund	19,237	
Brinsmade Lutheran Church Cemetery Fund	15,934	
Lebanon Church Cemetery Fund	14,143	
Leeds Lutheran Church Cemetery Fund	<u>15,402</u>	64,717
Andvari Hallson Cemetery Association Endowment Fund		20,094
Anne Carlsen Center for Children Endowment Fund		1,455,256
Art & Esther Emerson Endowment Fund		174,717
Arthur Moore Fund		342,507
Beaulieu Cemetery Fund		14,440
Bellevue Cemetery Association Endowment Fund		83,723
Bismarck Hebrew Congregation Endowment Fund		14,292
Bismarck Schools BECEP Fund		11,089
Bismarck Schools Chemistry Fund		2,847
Bismarck/Mandan Branch of AAUW Leadership Fund		11,349
CCC Statue Endowment Fund		6,170
Center for Peace Studies Fund		160,730
Clarence & Ardeen Sveum Exhibit Fund		936,785
Clarence O & Ardeen E Sveum Endowment Fund		10,282
Connie Wold Wellness Foundation		102,250
Dakota Children's Advocacy Center Endowment Fund		26,983
Dakota Social Justice Fund		54,478
Deering Lutheran Church Cemetery Fund		13,207
Donald J. Rupp Endowment Fund		58,894
Dorothy D. James - Camp Grassick Fund		5,847
Elmer & Lucille Hoffert Medical Research Fund		38,877
First Lutheran Church Endowment Fund		58,089
Fort Stevenson Foundation Endowment Fund		189,412

Francis Fitzsimonds Endowment Fund		\$ 57,239
Fred & Ida Osmon Endowment Fund - Ryder/Garrison		18,507
Friends of Oscar "0" Endowment Fund		781
Friendship Park: Dickinson Endowment Fund		5,355
Gardar Cemetery Endowment Fund		80,833
Garnett House Fund		11,772
Gary Bird Charitable Endowment Fund		19,477
Genevieve Tamerius Fund		4,833
Glasston Cemetery Association Endowment Fund		18,879
Goshen - Moravian Cemetery Fund		11,517
Greenwood Cemetery Association Endowment Fund		18,194
Gustavus Adolphus Cemetery Fund		43,231
Hamilton Cemetery Fund	\$ 69,782	
Argue Family Fund for the Hamilton Cemetery Assoc.	63,164	
JB Martin Fund for Hamilton Township Cemetery Assoc.	9,292	
Mary Louise Blizzard Memorial Fund	<u>2,398</u>	144,636
Harold & Eva Williams Memorial Fund		12,623
Harold & Susan Bergquist Endowment Fund		8,832
Harris P. Kenner Memorial Fund		60,204
Historic Aadalen Church & Cemetery Fund		9,079
Historic Aadalen Church Endowment Fund		7,206
Historic Jewish Cemetery - Regan, ND Endowment Fund		44,302
I.O.O.F. Cemetery of Cando Fund		46,143
Inspiring Minds Endowment Fund		16,248
James & Anne Ryan Memorial Fund		423,073
Jim Hurkes Scholarship Fund		15,661
John & Jean Rouzie Endowment Fund		42,550
John B. Williams Fund		180,328
John D. Kelly Endowment Fund		50,508
John H. & Helene Mac Donald Endowment Fund		53,016
Julius & Alta Burzloff Endowment Fund		132,925
Laurel & Betty Koehn Family Charitable Endowment Fund		189,146
Leon Dubourt Gorge Arts Council Endowment Fund		61,853
Lisbon Jaycees Scholarship Fund		9,819
Lisbon Kiwanis Leadership Fund		18,991
Lynn D. Ebert Charitable Fund*		8,150,544
Mandan Historical Society Endowment Fund		15,890
Mary Ann Pecka Memorial Fund		11,563
Mary E. Finley Endowment for Seniors of Walsh Cty. Fund		36,862
Mary G. Wiltse Memorial Endowment Fund		44,198
Maurice & Sharon Lardy Family Fund		11,717
McElroy Endowment Fund		38,309
McKenzie County Library Fund		15,016
Meadows Memorial Fund		487,789
Mike & Dorothy Dolan Minot Commission on Aging Endowment Fund		43,156
Mike F. Dolan Minot Rotary Club Fund		227,918
Minnewaukan Cemetery Fund		4,228
Minnewaukan Evangelical Lutheran Cemetery Fund / St. Peter Cemetery Fund		5,201
Nelson County Health Services Foundation Endowment Fund		12,600
Nick & Anna Logosz Memorial Fund		23,213
Nordmanna Cemetery Endowment Fund		13,915
North Dakota Conservation Foundation		236,726
North Dakota Golf Foundation		98,560
Northeast Regional Education Fund		19,539
Pleasant Hill Cemetery Endowment Fund		57,793
Sacred Heart of Jesus Shrine on the Prairie Endowment Fund		15,961
Sam Tolchinsky Endowment Fund		11,737
Short Creek Church & Cemetery Fund		18,356
Singh Family Endowment Fund		116,818
Sons of Norway, Sverdrup Lodge #107 Endowment Fund		24,549
South Pembina Cemetery Fund		2,843
St. Patrick's Catholic Cemetery Endowment Fund		13,934
St. Peter's Centennial Fund		12,329

St. Thomas City Cemetery Endowment Fund	\$ 43,846
Stony Lake Cemetery Fund	17,445
Stump Lake Park Endowment Fund	2,672
Susanne Delaney Mattheis Charitable Fund	1,179,444
United Methodist Church of Milnor Endowment Fund	27,919
Valentine F. Brossart Memorial Fund	14,011
Valley Grove Cemetery Endowment Fund	3,911
Vang Cemetery Fund	2,928
West River Veterinary Clinic Legacy Foundation	34,181
Total Restricted Endowment Funds	17,042,012

Donor Advised Endowment Funds

Aaron & Kristal Schmit Charitable Fund	27,014
Bradley & Julie Burgum Family Fund	167,804
Brooks F. Burgum Donor-Advised Endowment Fund	31,402
Bryan & Cynthia Dvirnak Endowment Fund	11,217
Cofell Heritage Fund	223,554
Craig B. & Kathryn J. Oksol Family Charitable Fund	29,289
Dahl-Beres Charitable Fund*	25,099
Dirty Rock Endowment Fund	28,390
Donna Maston Charitable Fund	178,890
Evan's Support Endowment	1,926
Frank & Joanne Bavendick Family Fund	10,081
George & Helen Christensen Family Charitable Fund	60,430
George & Linda Linz Charitable Fund	10,878
Hankey Family Charitable Fund	145,557
Hugh B. Cowan Charitable Fund	23,018
I. A. Hendrickson Family Heritage Fund	61,749
Jim & Cyndy Robinson Family Charitable Fund	36,445
John & Anna Mae Hankey Charitable Fund	42,443
John C. Chatelain & Catherine S. Jenson-Chatelain Charitable Fund	56,236
Kaitlin (Schindler) Prins Memorial Endowment Fund	13,559
Kaye Jessen Endowment Fund	32,649
Kirchmeier Family Charitable Fund	22,765
Little Buddy Foundation	26,192
Lynn & Carla Schaible Charitable Fund	197,059
Meyer Family Charitable Fund	367,060
Michael and Kari Goos Family Fund	17,075
Michael & Pamela Uran Charitable Fund	22,035
Mike & Patty Dwyer Family Ministry Fund	42,798
ND Fund for Animal Welfare	4,330
Peter and Stephanie Christianson Family Charitable Fund	173,593
Reuben & Clarice Liechty Family Donor Advised Fund*	5,261
Risan Family Charitable Fund*	20,015
Robert & Deanne Horne Cross Ranch Endowment Fund	12,496
Sam A. Johnson Endowment for the Arts & Humanities	10,026
Sharing Hearts Fund	42,076
Stacey Ackerman-Todd Pringle Charitable Fund	41,932
Steven D. Nelson & Wanda A. Uran-Nelson Charitable Fund	247,031
Titan Machinery Charitable Fund	89,744
Troy & Kree Nelson Family Charitable Fund	46,704
Yaggie Family Charitable Fund	645,897
Total Donor Advised Endowment Funds	3,251,721

Operating Endowment Funds

A.L. Braaten Fund	409.71
Arden Burbidge Fund	512.14
Bill & Jean Guy Fund	3,377.70
Brooks Keogh Fund	283.68
Charles Bailly & Company Fund	20,013.50
Cynthia Timmins Maule Memorial Fund	12,613.83
Deluxe Check Printers Operating Fund	45,452.65
Donald Schmid Fund	1,229.10

Dr. Richard H. & Mischelle Timmins Fund	\$ 55,126.40
First Bank Bismarck Operating Fund	4,805.83
First National Bank - Dickinson Fund	1,023.74
G.B. Gunlogson Estate Operating Endowment Fund	824,588.36
Harvest States Foundation Fund	5,112.97
J. Gerald Nilles Fund	512.14
Kevin J. Dvorak Fund	11,533.07
Lowell & Marlys Prince Fund	154.28
Mark Andrews Fund	1,024.24
Mr. & Mrs. Donald Shide Fund	394.70
North American Coal Company Fund	5,266.25
Orvald J. Bjerken Fund	52,403.92
Otto Bremer Operating Fund	48,263.31
Peter W. Nielsen Fund	409.71
R.E. Meidinger Fund	3,593.23
Richard Crockett Fund	204.87
Rodney Melby Fund	10,175.27
Ruth Everson Fund	2,407.04
Security State Bank, Robinson Fund	204.87
Soo Line Railroad Operating Fund	10,439.07
Steiger Tractor Inc. Fund	2,048.56
T.A. Roney Fund	862.82
Theodore F Kessel Sr. Fund	2,662.83
Vernon E. Wagner Fund	15,062.63
William Haugan Estate Fund	72,127.79

Total Operating Endowment Funds **1,214,300**

Total Endowment Funds **91,751,293**

Total Non-Endowment Funds **12,859,279**

Planned Gifts

Assets	\$ 1,542,214	
Liabilities, At Present Value	<u>(735,595)</u>	806,619

Operating Fund Balance

465,741

Total Net Assets **\$ 105,882,932**

Thank You To Our Donors

The incredible projects taking place in North Dakota because of NDCF grants happen because of passionate volunteers and generous donors. Thank you to all who use your resources to make North Dakota a better place to live, work, and play. You are making a difference in the lives of many.

H. Dale Aasand
 Stacey J. Ackerman
 Gary & LaNae Adair
 Cheryl Adamson
 Gary A. Adkisson
 Aetna Foundation
 AgCountry Farm Credit Services
 Monty Albers
 Alice & Valentine Brossart Family
 All Inclusive World Travel
 Kathleen Allen
 Joshua Allmaras
 Kathy Altringer
 AmazonSmile Foundation
 American Bank Center - Dickinson
 American Legion Club - Ellendale
 Anamoose Civic Club
 Genevieve Andersen
 Anderson Family Joint Revocable Living Trust
 Betty Anderson
 Deb Anderson
 Diane Anderson
 Gladys Anderson
 Kathryn A. Anderson
 Kristie Anderson
 Lane Anderson
 Lorna Anderson
 Marjorie Anderson
 Myra Anderson
 Tracy Anderson
 Verden Anderson
 Ethan Andress
 Anne Carlsen Center
 Apergy
 Arc of Dickinson
 Arizona Elite Real Estate Group
 Laurel Arndt
 Harold Arneson
 Arthaud Family Irrevocable Trust

Gigi Artz
 Loye Ashton
 Assumption Abbey
 Aaron Auer
 Auxiliary to the ND Veterinary
 Elizabeth Axtman
 B & D Wesfall Farm
 Eleanor Bader
 Deeann Baertsch
 Harris Bailey
 Baker Boy
 Baker Consulting, LLC
 Sharron Bakkegard
 Balch & Bingham, LLP
 Bank Forward
 Bank of England
 Bank of Hamilton
 Rob Trebilcock
 BankNorth
 Kimball Banks
 Jacalyn Barnes
 Carole Barrett
 Cheryl Bartz
 Base Utilities
 Baseview Dairy Queen
 Basin Brokers, Inc.
 Gerald Bauer
 Cel Baumgartner
 Brian Bauske
 Bayer Fund
 Cody Beck
 Coleen Beck
 Janice Becker
 Brittany Beechie
 Bek Consulting, LLC
 Bell Bank & Trust
 David Bender
 Sharon Bendixson
 Bruce Benson
 Kari Benson
 Dara Berald
 Ann Berg
 Ellis Berg
 Erika Berg
 Rick Berg

LaMae Bergan
 Adeline Bergeron
 Douglas Berglund
 Alan Bergman
 Joann Bergsgaard
 Lyla Bertsch
 Peggy Bettenhausen
 Thomas Bettenhausen
 Denise Beusen
 Mary Beyer
 Jane Bichler
 Duane's Radiator Shop
 Kari Bigelow
 Rick Bigler
 Shirley Ann Bill
 Gary Bary Gird IRA
 Bismarck Global Neighbors
 Bismarck Rotary Club Scholarship
 Margaret Bjornson Holm
 June Bjornson
 Stan Bjornstad
 Cynthia Black-Neuharth
 George & Connie Blank Charitable Fund
 Brenda Blazer
 P. James Blomberg
 Peggy Bloom
 BlueCross BlueShield of North Dakota
 BNC National Bank
 BNSF Railway Foundation
 La Vonne Bobb
 Scott Boe
 Dallas Boeddeker
 Sandy Boehm
 John Boekelheide
 Trudy Boelter
 Barbara Boggess
 Jonila Bohn
 Marlys Boll
 Robbie Boll
 Jana Bommersbach
 Kristen Borysewicz
 Cleo Boschee

Bottineau Economic Development
 Jean Boulduc
 Bowers Ag, Inc.
 Bowman Area Chamber of Commerce
 Bruce Bowman
 Marie Boyle
 Arne Boyum
 Esther Braaten
 Nick Bradbury
 Brainstorm, LLC
 Bruce Brandvik
 Lisa Braun
 Duane Breitling
 Bremer Bank
 Bremer Bank NA
 Brad Turner
 Betsy Brend
 Bright Funds Foundation
 Ellen Britton
 David Brossart
 Rocky Brown
 Toni Brummund
 Reynold Buchholz
 K.B. Buechler
 Jared Bullinger
 Kevin & Kari Bunn
 James Burbidge
 Burgum Foundation
 Julie Burgum
 Steve Burian
 Kari Burkhardt
 Madonna Burres
 Bush Foundation
 Dina Butcher
 Linda Butts
 LaRae Buxa
 Carl Bye
 Colette Byrum
 C & C Designs
 Romel Canapi
 Capital Credit Union
 Leon Carey
 Breanne Carlson
 Clare Carlson
 Daniel Carlson
 Ruth Carlson
 Carolyn Adams IRA
 Carrington Dental Care
 Carrington Drug
 Carrington High School Class of 1958
 Catherine Cartier
 Ron Cartwright

CAS Advisors, LLC
 Casey's General Stores
 Cash & Carry Lumber
 Leah Cathell
 Cavalier Thrift Store
 Center Fire Welding Services, Inc.
 Center for Compassion & Creativity, Inc.
 Central Dakota Family Physicians, PC
 Central Pharmacy
 Chad's Electric, Inc.
 Jim Chamley
 Charbonneau Car Center
 John Chatelain
 Chicken Hut
 Chicken Scratchin by Lynus
 Choice Bank
 George Christensen
 Gerald Christensen
 Dennis Christianson
 Tim Christianson
 CHS Ag Services
 Patricia Churchill
 Citizens Insurance Agency
 Citizens State Bank
 Citizens State Bank - Midwest
 City of Emerado North Dakota
 Lorelei Clemetson
 David Clinton
 Clothes Mentor
 CoBank
 James Cochran
 Jay Cofell
 Community Credit Union
 Community Violence Intervention Center
 Ira Compton
 Eldon Conant
 Connie Connolly
 ConocoPhilips Company
 Janice Cooper
 Cooperstown Bible Camp
 Core Animal Clinic, PLLC
 Cornerstone Bank - Fargo
 Dennis Cote
 Drew Courtney
 Diane Cowdrey
 Gary Cowdrey
 Carol Ann Crissler
 Cristopher Turman, PC
 Dawn Cronin
 Richard Crooks
 Marcella Crosby

Patricia Ann Crumpton
 Juanita Cunningham
 Sue Currie
 Darlene Cvancara
 Dacotah Bank - Aberdeen
 Wendy Dafforn
 Donald Dahl
 Matt Dahl
 Tanya Dahl
 Terrence Dahl
 Adam Dahlstrom
 Dakota Anglers
 Dakota Cabinetry, Inc.
 Dakota Central Telecommunications Cooperative
 Dakota Community Bank & Trust
 Dakota Diesel
 Dakota Plains Insurance Agency
 Dakota Steel Art
 Dakota Western Bank - Bowman
 Dakota Western Bank - Hettinger
 Betsy Dalrymple
 Dan Porter Motors, Inc.
 Elizabeth Danula
 Daryl Kuhnenn Memorial Ride
 Azam Daugherty
 Dave's Place, LLC
 Scott Davis
 Shelly Decker
 Charles Dehoff
 Devin Deile
 Susan DePauw
 Shirley Destache
 Leslie Dethlefsen
 Gaylen Dick
 Kent Dick
 Dickey Rural Telephone Cooperative
 Dickinson State University
 Marlene Diehl
 Dietzler Electric
 Susan Dingle
 Kathryn Dinneen-Wirtz
 Craig Disher
 Charmane Disrud
 DJ & J Concessions
 Kora Dockter
 Jan Dodge
 J. Doerner

Andrea Domaskin
James Domaskin
Dan Donlin
Lorraine Dopson
DP Enterprise, Inc.
Drayton Community
Chamber of Commerce
Drayton Medical Services, Inc.
Kimberly Dressler
Driven, LLC
Duane Bring, IRA
Rebecca Dubord
Linda Duchscher
Mary Duchscher
Brian Duchscherer
Derek Dukart
Faye Duncan
Sharon Dunlop
Tim Duppong
Linda Dupre
Lynette Durham
Kevin Dvorak
Phyllis Dvorak
Clark Dybdahl
Eagle Aerie No. 2923
Patricia Easton
Mick Eberle
Dwight Eckart
Dave Eckroth
Economy Propane, LLC
Regina Eisenzimmer
Elick Funeral Home
Edna Ellefson
Al Elliott
Elm River Credit Union
Emerado Arvilla Lions Club
Emerado Farmers Elevator
Employees of Starion Bank
Energy Transfer Partners L.P.
Charlotte Engel
Teresa Engel
Pam Engelhardt
Kari Enget
David Engstrom
John Enns
Epic Management
Eppler Law Office
Don Eppler
Florence Erdle
Eric & Wendy Schmidt Fund
for Strategic Innovation
Erich's Excavating
Erica Erickson
Ann Erickson
Ethel Erickson

Glenda Erickson
John E. Erickson
Mary Erickson
Terry Eshenko
Dick Espeland
Mary Ann Etzler
Evans Funeral Home, Inc.
Ileen E. Everett
Family Chiropractic &
Massage, PC
Erlys McCullough Fardal
Farm Credit Services of
North Dakota
Alice Fatland
Janet Feder
Deanne Fedje
Tara Feil
LeRoy Feist
Justin Fiesel
Lynne Finer
Fire & Iron Motorcycle Club
Station 16
First International Bank &
Trust
First National Bank & Trust
First State Bank of Harvey
First United Bank of Park
River
FirstLink
Wayne Fischer
Fisher Sand & Gravel Co.
Shannon Fisk
Colleen Fite
David Fixen
Mary Flaa
Institute of Attitude
Floor Guys
Christopher Ford
Forks Lath & Plaster, Inc.
Jeff Forward
Jasmin Fosheim
Donald Foss
Frances M. White Trust
Frank Dooley & Pamela
Hermes Giving Fund
Fraternal Order of Eagles
Aerie No 2328
Fraternal Order of Eagles
Ladies Auxiliary
Fraternal Order of Eagles,
#3080 Eagles
Cheryl Fredenburg
Gerald Frederick
Bonnie Freeland
Diana Freese

Maggie Fresonke
Carol Frey
Kent Friederich
Friends at Microsoft
Eugenia Frigaard
Jody Friskop
Joseph Fritel
Ray Fritel
Nora Frohberg
Judy Froseth
Jean Fuka
Phyllis Fuller
Marion Gackle
Ginger Gailfus
M.A. Galgerud
Dee Anne Gall
Randy Gallagher
Clyde Galliger
Stacy Gangl
Joe Garcia
Garr Dental Center
Lori Ann Gefre
Phyllis Gefroh
Elsie Gilbertson
Marjorie Gillespie
Renae Gjellstad
Casey Gjermundson
Duane Glasner
GlobalGiving Foundation, Inc.
Donald Glynn
Go Wireline, LLC
Ernest Godfread
Mark Goedken
Mary Good
Steven Good
Ron Goodman
Bill Goodwin
Mike Goos
Gooseneck Implement
Deb Goplen
Janell Gorder
Anne Goss
Dennis Gowen
Terry Graber
Misty Grace
Grafton Drug
Larry Grandalen
Bonnie Graves
Bryan Gray
Kathryn Gray
Greater Twin Cities United Way
Pamela Greenagel
Grenora High School
Activities
Carolyn Griffin



The Power of a Recurring Gift

If you'd like to provide consistent support to one of the funds at NDCF, consider setting up a recurring monthly gift online. Just \$10 or \$25 every month would help a fund steadily grow and the process is simple!

"The ease of use of the online system had my reoccurring donation set up in a few minutes," explains Cory McCasky, a regular donor to the Rural Leadership North Dakota Alumni Endowment Fund. *"The ability to pay with a debit or credit card makes it easy to keep a consistent contribution and choose an amount that is budget friendly. While I may not be able to provide a lead gift, I can provide for long term growth of the fund."*

You can choose the amount to give every month, depending on your budget - \$10, \$25, \$50, \$100? Regular gifts provide reliable support to an organization, community, or school fund. And when several people commit to a monthly gift, the impact on a fund can be impressive!

To set up a recurring gift to our foundation, follow the steps below:

1. Go to www.NDCF.net/Donate
2. Start entering the name of the fund in the Search box or click on "show all funds list" to see your options. Choose the fund you wish to support.
3. Choose "Recurring Donation Amount" and fill in the amount of money you wish to donate every month.
4. Follow the instructions to complete the checkout process.

You will receive a tax receipt for your donation and you can change the amount or frequency of your gifts at any time.

Thank you for improving the quality of life in North Dakota through our foundation!

Christopher Griffin
Frances Grindeland
Michael Gross
Joan Grossman
Kenneth Grosz
Richard Grosz
Joyce Grueneich
Shelly Grueneich
Helen Guilbert-Ryyth
Josh Guler
Orla Gunlikson Smith
Pamela Gunlikson
Joletta Gusaas
John Haas
Hagen Dental, PC
Martha Hagen Macleod
Hager Excavating
Greg Hager
Gail H. Hagerty
Dave Hagler
Joan Halberg
Carol Hall
Mary Hall
Michael Halldorson
Pamela Halone
Brandon Halsey
Marie Halstead
Dorothy Haman
Susan Hamre Smith
Barbara Handy-Marchello
Hankinson Dental
Dale Hansen
Sylvia Hansen
Don Hardy
Robert Hardy
Peggy Harmel
Lenora Harrison
Betty Harstad
Marie Harstad
Harvey Warehouse Grocery,
Inc.
Stephanie Hasbargen
Hatton Eielson Museum &
Historical Association
Hatton Prairie Village
Dennis Hauck
Dick Hauser
Steven Haux
Hav-It Services
Carol Hawkinson
Heartland Candies, LLC
Hebron Public School
Robyn Heck
Bryan & Amber Hedstrom
Alyce Heer

Heidi Lannen
Mrs. Joe Heilman
John Heinen
Heidi Heitkamp
Marcia Hellandsaas
Carol Hendrickson
Dianne Hendrickson
Lyn Hendry
Rhonda Henneman
Tim Hennessy
William Henning
Bonnie Henningson
James Herrington
Molly Herrington
Nick Hertz
Stephen Herzog
Hess Bakken Investments II,
LLC
Heidi Hesse
Mavis Hay Kettervig
Hettinger Area Chamber of
Commerce
Hi Way Lounge, LLC
Hilltop Securities, Inc.
Michelle Hintz
Morrill Hirsch
Trista Hodges
Marie Hoerner
Charlotte Hoff
Joan Hoff
Lisa Hoffart
RoxAnne Hoffarth
Allen Hohbein
Rebecca Holm
Phyllis Holter
Alice Holweger
Christine Holweger
Hope Electric
Kathy H. Hornbacher
Saralee Hoselton
Stephanie Hougen
Ian Houghton
Allan C. Hoverson
Phyllis Hovland
Gina Hruby
Leah Hubbard
Joel Huber
Emma Huelsman
Kenneth Hueske
Michael Hurst
Katie Hutchens
John Hutchison
Stacey Hutzenbiler
Theron Huwe
Marie Hvidsten

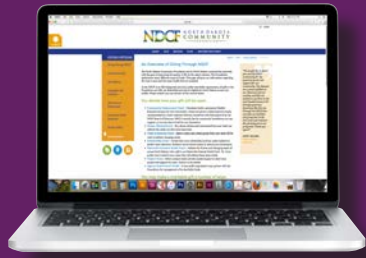
Indian Hill Electric, Inc.
Holly English
Edward Irion
Ironworks Welding, Inc.
J & G Landscaping, Inc.
Debra Jackson
Rhonda Jacobs
Kristin Jaeger
James C. Clement DVM, Inc.
James Langseth
James River Dentistry
JoAnn Jameson
Joyce Janes
Bobbi Jarrett
Jason Jarrett
Jawaski Glass & Repair
Kathryn Jenrich
Arthur Jensen
John M. Heinze Trucking
The Smile Center
Clarak Johnson
Craig Johnson
Cynthia Johnson
Kevin Johnson
Melissa Johnson
Ray Johnson
Roger Johnson
Ryan Johnson
Sandra Johnson
Steven Johnson
Vaune Johnson
Erica Johnsrud
Jane Johnston
Christie Jones
Thomas Jones
Mark Jorgensen
Wendy Jorgenson
John Joyce
Judges & Magistrate Judges
of the United States District
Court for the District of
Minnesota
John Juelson
Donna Jundt
Wendy Juntunen
Bob Kaiser
John Kaiser
Adele Kalberer
Doris Kaleva
Kansas City Toyota Dealers
Association
Martha Kapaun
Deloris Karnopp
Kathleen Karstensson
Violet Kaseman

Violette Kaseman
Susan Kasprick
Misti Kauffman
Michelle Sue Kaufman
Bonnie Kautz
Mary Kempel
Pat Kendall
Kenmare Area Community
Foundation Fund
Terry & Shari Kensok
Angie Kesler
Diane Kiefer
Mike Killoran
Kindred State Bank
Connie Kinnoin
Doug Kinnoin
Cleo Kirkland
Debra Kirschenheiter
Kiwanis Club of Minot
Kiwanis Club of Wahpeton-
Breckenridge
Karen Klein
Kline Family Dentistry, PC
Knapp Oil Corporation
Katherine Knoff
Kari Knudson
Dean Knutson
Pat Koch
Rodney Koch
Brenda Koehmstedt
Wayne Koering
Dawn Kopseng
Melissa Korslien
Diane Kouba
Engelbert & Deborah Kraft
Terry Kraft
Kramer Construction
Barbara Kress
Sharon Krieger
Dolorus Krile
Angela Kritzberger
Bill Kritzberger
Mary Kritzberger
Cindy Kronberg
James Kubik
Valerie Kueffler
Kukowski Properties, LLC
Andrea Kulevsky
Kulm Service, Inc.
John Kulstad
Bonnie Kummer
Vicki Kunz
Judy Kutzer
Marilyn Lacher
Brandi LaFramboise

Mike LaLonde
Melinda Landman
Landman's Assoc of ND
Taryn Landowski
Nathan Lange
Tim Langerud
Deloris Langseth
Geri Langseth
Clarice Langved
Ron Laqua
Marshall Larsen
Sharon Larsen
Larson Farms Since 1871
Darlene Larson
Dodie Larson
Eric Larson
Spencer Larson
Latozke Electric, LLC
Laughing Sun Brewing
Company, LLC
Elizabeth Lauman
Terry Lawler
Kristen Laxdal
Amy Leas
Peggy Ledahl-Schmidt
Jeananne Lee
Tim & Terry Lee
Leevers Foods, Inc.
Legacy Cooperative
Legacy Financial Partners -
Ameriprise Financial
Sharon Lehr
Gordon Leingang
Lemer's Ace Hardware
Susan Lemm
Lemnus Farms, Inc.
Levrich Farms, Inc.
Lidgerwood High School
Activities
Lidgerwood Public School
Melvin Liebelt
Clarice Liechty
Si Liechty
Patricia Ann Lies
Lignite Energy Council
Lincoln State Bank
Julie Lindemann Slag
Vernell Lindemann
Bruce Lindgren
David Lindseth
Barb Lindvig
Kurt Link
George Linz
Lions Club of New Rockford
Clara Lipp

Russell Lipp
Lisbon Public School District
#19
Joan Locken
Mona Loe
Rachel Logan
James Loos
Karla Lovaasen
Arlene Lovgren
Arlene Lueck
Virginia Luger
Richard Lundby
Julie Lunde
Ronald Lundquist
Lynn D. Ebert Trust
Michael Lynnes
Grace Lystad
Jim & Michele Seil
Dennis Maas
Christi Mack
Galen Mack
Kyle Mahlum
Kristi Mahrer
Mann Trucking
Marathon Oil Corporation -
Dickinson
Glenn Marcil
Donna Marthe
Cheryl Martin
Melinda Martin
Wayne Maruska
Mary's Bookkeeping & Tax
Service, LLC
Dave Mason
Marvin Masset
G. David Massey
Donna Maston
Tim Mathern
Lori Mattheis
Matthew J. Volk, D.D.S. PC
James Matthews
Jason Matthews
Randall Mauch
Jan Maurstad
Monte McAtee
Debi McBride
Ralph McCanna
Cory McCaskey
Michael McCormack
Brad McCullough
Roger McDonald
Peter McElroy
Lisa McEvers
Myrna McGregor
Paula McIntyre

Jerry McLain	Sherrie Muse	Northwest North Dakota	Janel Paupst	Resortstay International, LLC	Arlys Sander
Ron McLain	Mark & Monica Musich	Community Foundation	Jay Pearson	Wayne Retzlaff	Dale Sandstrom
Kari McNary	Delores Mutch	Linda Nudell	Keri Pedersen	Reuben E. Liechty Keogh	Sarah Vogel
MDU Resources Foundation	Alyson Myhre	NWC, Inc.	Keith Peltier	Retirement Account	Sarah Sarbacker
MDU Resources Group, Inc.	Sara Myhre	Jean Nygaard	Pembina County Auditors	Richard & Esther Kannenberg	Katherine Satrom
Sonia Meehl	Charlotte Myrdal	Shirley Nysveen	Office	Revocable Trust	Nancy Satrom
Douglas Meier	Naastad Brothers, Inc.	Oakes Area Community	Dale Peppel	Richardton Dental Clinic	Jeff Sauer
Barbara Meiers	Kallie Naastad	Foundation	Ila Perhus	Richardton-Taylor Public	Geniene Sauvageau
Lillian Meiers	Karen Naastad	Oakes Cub Scouts Pack #147	Ruby Perhus	School District #34	Morris Saxerud
Roger Meisner	Vani Nagala	Oakes Enhancement, Inc.	Justin Perrin	John Richman	Susan Sayer
Rod Melby	Nancy Johnson Charitable	Oakes Lions Club	Mark Peterick	Marc R. Dicks	W. Scott Sayer
Melvin Nelson Retirement Plan	Fund	Oakes Public School	Jacob Peters	Renee Riedesel	Sayler Implement, Inc.
Monica Mertz	ND Career & Technical	Denise Oase	Marlin W. Peterson	Richard Riely	Valerie Schaaf
Karen Thompson Meter	Educators Assn.	Ana Obradovic	Robert R. Peterson	Richard Riha	Anthony Schaffer
Metro Area Ambulance	ND Masonic Foundation, Inc.	Geliza Ocheltree	Nancy Phalen	Michael Risan	Frances Schaffer
Service, Inc.	ND Parks & Recreation Dept.	Kathleen O'Connor	Annette Pickard	John Risch	Jacob Schaffer
Candace Meyer	ND Veterinary Medical	Donna Odegaard	Stephen Pickell	Rise Financial Group	Beth Schatz Kaylor
Carmen Meyer	Association	Pamela Offerdahl	Jerome Pilch	Jane Rismon	Scheels
Dennis & Bernice Meyer	ND Water Education	Edem Okudzeto	Dawn Pladson	RLND Alumni Assoc.	Scheels Kirkwood
Nancy Meyer	Foundation	Marlis & Edwin Olsen	Polar Communications	Robert Munson, IRA	Kimberly Schell
Mickelson Tiny Plants	Neameyer Storage Rentals	Beth Olson	Helen Poling	Rockwell Collins	Jill Scherbenske
Cindy Mickelson	Dennis Neameyer	Mary Jo Olson	Todd Porter	Rocky Road Landscaping,	Kenneth Schiele
Roberta Mickelson	Lisa Neameyer	Troy Olson	Presentation Medical Center	LLC	Schiff Hardin
Microlap Technologies, Inc.	Barbara N. Lelson	John Olstad	Preservation North Dakota	Karen Rodakowski	Alice Schilke
Midcontinent Foundation	Donald Nelson	ONEOK	Karen Preszler	Joyce Rogers	Della Mae Schilling
Allen Miller	Jacolyn Nelson	Amy Ones	Ramona Prevost	Tom Roll	Susan Schlecht
Brooklyn Miller	Natalie Nelson	Sandra Opperud	Tom Probst	Connie L. Rosencrans	Wilbur Schlecht
Colleen Miller	Steve Nelson	Optimist Club: Dicknson	Diane Procive	Renee Rossow	Angie Schlicht
Perry Miller	Karla Neset	Orthopedic & Sports Physical	Pro-Mark Services, Inc.	Lillian G. Rost	Jean Schmaltz
Robert Miller	Orville Ness	Therapy, Inc.	Audrey Pruitt	John Roswick	Marian Schmaltz
Dorothy Miller-Fenske	New Century Press	Orwig's Tubs, Inc.	Toni Ptacek	Rotary Club of Bismarck	Mary Jane Schmaltz
Jeanne Miranowski	L. Rene Neland	Morris Ostmo	Alyssa Quade	Joel Rothfus	Alexander Schmidt
Garry Mislán	Ashley Vaughn Nichols	Robert Ostmo	Qualified IRA Distribution	Kay Rotvold	Donald J. Schmidt
Missouri Slope Areawide	Niewoehner Funeral Home	Otter Tail Power Company	from Donald & Marlene	RS Electric, LLC	Melvorn & Linda Schmidt
United Way	Nipstad Farms, Inc.	JoAnne Ottmar	Hastings	Rugby Broadcasters, Inc.	Tamie Schmidt
Marsha Mitchell	Roxie Nistler	Otto Bremer Trust	Jan Quandt	KZZJ	Aaron Schmit
Herb Mittelstedt	Shirley Nitz	Cindy Overseth	Raile Insurance, Inc.	Rugby Eagels Aerie #3834	Diane Schmitz
Evan Moe	Carlyle Norby	Ox Cart Trails Historical	Jamie Rarick	Rugby Farmers Elevator Co.	Schmitz, Inc.
Mohall Fire Department	Jason Nordmark	Society, Inc.	Geoffrey Rath	Abbey Ruland	Kathleen Schneider
Wendel Mongeon	Mary Nordmark	Gerry Oyen	Gabe Rauschenberger	Run for Reason, LLC	Steven Schoenig
Mitchell Monson	Kathleen Nordquist	Rhonda Paluck	Ray Pladson Retirement Plan	Carol Russell	Charles Schorsch
Guy Moos	Shirley Norgard	Ellie Papineau	Raymond James	Randal Rust	Roberta Schreiber
Sandra Moos	North Border Crop	Judith Parin	Razor Edge Landscaping, LLC	Dava Rustan	Cynthia Schreiber-Beck
Moose Lodge #239	Consulting, LLC	Jack Paris	Red River Supply, Inc.	Wendy Ruud	Jeanne Schreiner
Joann Moquist	North Dakota Association for	Park District of the City of	Red River Valley & Western	Ryans Bar, Inc.	Jill Schrupp
Wade Bachmeier	Career & Technical	Wishek	Railroad Company	Bryan Safratowich	Tom & Char Schuler
Clarice Mosolf	Education	William Parker	Lee Reddig	Murray Sagsveen	Jay P. Schuler Revocable
Brian Mothershead	North Star Masonic Lodge	Sharon Pasche	Janice Rehak	Gerald Sailer	Living Trust
Donna Mrachek	#16	Bob Paul	Wayne Rehovsky	Emily Sakariassen	Pam Schulte Vaden
Kim Muller	Northern Plains Electric	Grace Paul	Ann Reich	John Erik Sakariassen	Karen Schumacher
Maureen Munro	Cooperative	R. Jay Paul	Joshua Reisenauer	John R. Sakariassen	Schwan's Home Service, Inc.
Patsy Muri	Northern Plains Engineering	Beni Paulson	Kevin Remington	Salwei Real Estate	Schwan's Shared Services,
Murphy Insurance Agency,	Northland Electric, Inc.	David Paulson	JoAnn Renfrow	Sand Steel Building Co.	LLC
LLC.	Northland Pizza Ranch, Inc.	Gary Paulson	Reservation Telephone	Gordon Sandau	Evelyn Schwartz
Tom Murphy		Richard Paulson	Cooperative: RTC	Sandberg Law Office, Ltd	Charlotte Schweigert



Types of Gifts We Can Accept:

- Cash, check, or credit card
- Transfers of Stock
- Real Estate
- Agricultural Commodities

Other Ways to Give:

Make NDCF the Beneficiary of your Life Insurance Policy or Trust (be sure to specify which fund at NDCF you wish to benefit)

Establish a Charitable Gift Annuity at NDCF and receive a guaranteed annual payment for life.

Take advantage of the IRA Charitable Rollover - transfer money directly from your IRA and have it count for your RMD, but not your income!

Leave a gift to your fund at NDCF in your will.



Carlyle Scott
William Scoville
Iris Sedlund
Philip Sedo
Brenda Seehafer
Hubert Seiler
Rose Selensky
Brenda Selinger
Jordan Selinger
Sandra Selzer
Dean Allen Sevigny
Carla Sheeley
Steven Shepherd
Agnes Sherlock
Shervens
Andrea Sherwood
Shiloh Christian School
David R. Shultz
Kristina Sieg
Pat Sieg
Tom Sieg
Fern Simons
Lynnell Simonson Popowski
Stan Sirek
Steve Sirr
Robert Skabo
Smellie Family Fund of Fidelity Charitable
Sarah Smith Warren
Deborah Smith
Gary Smith
Jane Smith
Kyle Smith
Randall Smith
Ronald Sneva
Suzi Sobolik
Irma Ann Solberg
Wayne Solberg
Kevin Sommer
Martha Sorenson
Chantel Southam, CPA
Gary Spangelo
Mary Will Speldrich
Anna Mae Spiekermeier
Steve & Cathy Springan
Sylvia Squires
St. Anthony Charity Fund
Karla Stanek
Starion Bank - Mandan
Stark Development Corporation
Margret Staskivige
State Side Electric, LLC
Karrine Steenblock
Bryan Steiner
Lori Steinwand

Steve & Eileen Scheel
Charitable Fund
Linda Steve
Gregory Stevens
Kelly Stewart
Lawrence Stewart
Ellin Stiteler
Jennifer Stock
Michael Stokka
Harold Stolt
Stone Mill, Inc.
Christi Stonecipher
Sally Stotz
Emelia Stover
Wanda Strege
Laurie Strommen
Amy N. & Dale Stromsodt
Michelle Such
Angela Suckut
Elizabeth Suhr
Wendy Sullivan
Surety Title Company
C.C. & R.R. Swanson
Glenda Talkington
Agnes Tallarico
Traci Tarnasky
Wanda Terpening
Gloria Terry
The Barry Foundation
The Heidi J. Lannen Trust
The John Roger Njaa & Nancy Marie Njaa Revocable Living Trust
Sandra Thiele
Jack Thompson
Juliann Thompson
Ken Thompson
NDSU Extension Service
Sarah Thorson
Wilma Thorson
Ruth Thurn
Avis T. Eilden
Tim & Connie Holmen Fund
Tim Dwyer Farm Trust
Trudy Tischer
Brian Tjernlund
Tobacco Depot, LLC
Today's Look
Judy Tofte
Sharon Toop
Touchmark on West Century
Laurel Toyne
Toyota Dealer Match Program
Helen Tracy

Travelers - CyberGrants, Inc.
Sheryl Treitline
Trinity Health Foundation
Wayne Trottier
TRP Studios, LLP
True Grit ND Inc.
Lesley Trulson
Sarah Trustem
Paula Tschosik
Katie Tuchscher
David Tuchscherer
James Tuchscherer
Brian Tuite
Richard Tulp
Lottie Turman
Turtle Mountain Communication, Inc.
Harry T. Tyre
Danita Tysver
Linda Uhlich
Thomas Ulmer
Rebecca Udem
United Valley Bank
United Way of Dickinson
United Way of Richland-Wilkin
Dawn Watson
Joy Ust-Mclain
Valley City Veterinary Hospital, PC
Valley Veterinary Hospital
Jenny Vandehoven
Rick Vannett
Vanray Farms
Diana Varner
Jeremy Vazquez-Kessel
Charles Vein
Arlin Veitz
Nathan Allan Veitz
Verendrye Electric
Veterans Club, Inc.
Joyce Viall
Victory Diesel, LLC
Viking Electric
Viking Homes
Reuben Viland
Victor Vilhauer
Vivatson Farm, Inc.
Matthew Voigt
Bruce Vold
J. David Vold
Gary T. Volk
Dan Vollmer
Leann Vollmer

V-W Motors, Inc.
Michael Wagner
Wahpeton Ace Hardware
Wahpeton Public School District
Wahpeton Public Schools
Pamela Walcker
Wald Fencing & Supplies, LLC
Gary Wald
Joyce Waldock
LouAnn Waliser
Heather Wallace
Mary Walz
Haley Wamstad
Nicki Wamstad
Washburn Ambulance Service
Russell Waters
Susan Watkins
Gwen Watson
Weber Insurance Agency, Inc.
Francis Weber
Richard W. Weber
Norman Weckerly
Robert Wefald
Susan Wefald
Al Weigel
Allan Weisenburger
David M. Welk
Marvin Welk
Wesley Well
Charles Wellman
Herbert Welte
Carol Weninger
Homer Wennerstrom
West Central Initiative
West River Veterinary Clinic - Hettinger
Western Area Water Supply Authority
Western Cooperative Credit Union
Western State Bank
Jennifer Westphal
Scott Wettstein
Kathy M. Wetzel
Joy Wezelman
Mary Whalen
Peter White
Gregg Wiche
Brian Wick
Janet Wieser
Florence Wiest
Kellie Wikenheiser

Mark Wilhelmi
Ryan Wilhelmi
William & Connie Connolly Charitable Fund
Clark Williams
Rob Williamson
Wil-Rich
Jon Wiltse
Wishek Collision, Glass & Restoration LLC
Amanda Wisness
WM. C. Blair Post No. 144, American Legion Trust Fund
Richard Wohl
Sara Dee Wohl
Ardyce Woinarowicz
Janet Wolff
Women's Care Center
Diane Woodard
Fred Wosick
Pauline Wuori
XL Transport, LLC
Michael Yaggie
Mark B. Yahna
Dalton Yazzie
Sparkle Yeargan
Young at Heart
Geraldine Young
James Young
George Youngerman
YourCause, LLC Trustee for American Family Insurance Dreams Foundation
Matt Ystaas
Yvonne F. Ranschler, IRA
Carol Zacher
Dennis Zentner
John Zetocha
Ellen Ziegenhagel
Zietlow Construction
Jeanne Zimmerman
Jim Zimmerman
Mark Zimmerman
Ryan Zimmermann
Amanda Zimprich
Dan Zink
Paul Zink
Margaret Zmarzlik
Dawn Zombeck

Memorials

These people were remembered by loved ones and friends through a gift to the North Dakota Community Foundation. We are honored to present their names as a tribute to their lives. May their memories remain strong in our hearts.

Lester & Helen Aasand
Minnie Amann
Harris & Pat Anderson
Harvey Anderson
Jane Anderson
Jean Anderson
Mrs. Jack Anderson (Melanie)
Patricia Anderson
Andrew Auer
Barb Ault
Emil Baranke
Helen Barstad
Helen and Everett Barta
Alma Baumann
Dwight Baumann
Mayvis Baumann
William Baumann
Kelly Beisinger
Delores Bell
Arlene Benson
Benjamin Berg
L. Duane Berg
DJ Berger
Art & Olga Bergeron
Ralph Bertsch
Lyle Bill
Tracy Bill
Jeanne Bjerke
Curtis Bohl
Family members of Ron & Marlys Boll
James, Loretta & Janet Bopp
Frank Borjeson
Carole Born
Darrell Boulduc
James Boulduc Jr.
James Boulduc Sr.
Albert & Lorraine Bowman
Frank Brossart
Dean & Gladys Brosseau
Marilyn A. Brown
Bo Buchanan
Dale Bunn
Marie Burud
Gordon Carlson
G. Christenson
Dave Cichos
Marcella/Barbara/Lee & Vivian Cochran

John E Conneran
Kelly Dakken
Darell Denich
Steven Ryan Dockter
Tree of lights Drayton
Duncklees
Bruce Durheim
Dean Dvorak
Godfrey Dvorak
Randal Dvorak
Sidney S. Dvorak
Tim Dwyer
HJV Ebertowski
Ray & Vivian Emanuelson
Fred Engberg
Sharon Engelbraktson
Lillian Enger
Lyle Erickson
Cheryl Klein Eshenko
Kristine Evenson
Joe F. Heilman
Frank Fage
Barry Fisher
Dr. Frank Zeck
Judge and Mrs. Ray R. Friederich
Sandy Frier
Edmund & Dorothy Gaarder
Class of '44 from Margaret Dahl Galgerud (Grenora)
Olive Gibbs
Paul Grans
Jim & Elaine Gray
Brooklyn Griffin
Bernice H. Hilzendeger
Kenny Habiger
Josephine "Josie" Hagel
Lois Haman
Beatrice Hamnes
Donna Hanson
Bernice Haugen
John Haugen
Helen Hawk
Deloris Hendrickson
James Hendrickson
Arliss Hennix
Claire & Evelyn Hermes
Ben & Mary Herseth
Donald Hettervig

Bernice Hilzendager
Seth Hinger
Lee & Ann Hogan
Marcia Hollan
Norma Holte
Arnold & Margaret Hoselton
In memory of Family Members of Saralee Hoselton
Eugene Howard
Phyllis (Garaas) Hummel - Class of 1957 from Lee Garaas (Grenora)
Phyllis Garaas Hummel
Gordon Huus
Mrs. Iona Peterson
Lynn Jacobson
Arthur & Agnes Jensen
Amber Johnson
Les Johnson Class of '65 (Rugby)
Carl & Helen Jorgenson
Verdun K. Schauer
Kurt & Elisabeth Kalbrunner
Colleen Brossart Karels
Colleen Karels
Patricia "Tish" Kelly
Harold, Helen, Chad Kirkeby
David & Merrilee Klemisch
Stan Klet
Raymond E. & Myrtle Knoff
Roger Knoff
Hilda Knudson
John Knudsvig
Harriet (Legge) Knuth
Harriet Graupe Knuth
Rueben Knutson
Phyllis Krchnavy
Daniel Kuntz
Carmen Kutzer
Cecelia Landowski
Tom Landowski
Tammy Lang
Jim Langseth
Robert Larimore
Nancy Larson
Vernon Larson
Curtis Matthew Laxdal
Margaret Lazier

Sylvia Leiseth
Ruth Lemley
Elsa Libak
Emery Lindgren
Bud & Dorothy Lubka
Ginny Lubka
Virginia Lund
Agnes Manger
Ryan Mastel
Jim Mattson
Gary Maurstad
Mary Lou McDaniel
Joan McGarvey
Gail Meberg
Grace Midgarden
Bev Miller
Ralph Modin
Mary Ann Moll
Mae Monson
Terry Monson
Maudie Mootz
Joan Mose
Marvin & Susan Mosolf
Jean Mosser
Duane Mutch
Rodger & Mavis Nelson
Vaughn Niemitalo
Randy Norby - Class of 1966 (Grenora)
Dan Nudell
Susan Olson
Virgil Olson
Donna Otto
Family Members of Richard & Marilyn Paulson
Ruby Paulson
Frank and Louise Pearson
Hjalmer Pederson Jr.
Aaron Perry
Francis Pfeifer
Elise Pierce
Ray Pladson
Jennifer Ramey
Calla Rarick
Evelyn Rasmussen
Ida Rasmussen
Marjorie Rasmussen
Wanda Rasmussen
Amber Redmann
Dale Rehak
Carmen Reinke
Jeff Reiten
Ted Reiter
Wayne Richards
Betty Riemer

James Roach
JP Robbins
Melcom Roffler
Phyllis Rolette
Andrew Rothfusz
Anna Rothfusz
Clarence Rothfusz
Gary Rothfusz
Paul Rothfusz
Ralph Rothfusz
Wallace Rustad - Class of '54 (Grenora)
Clara Sauer
Scott Sayer
Lois Schaan
Clarence Scharmer
Mary Schmitz
Lois Schultz
Lee Schumacher
Roger Schwab
Herbert Schwarz
W. Scott Sayer
Joan Sharee
Mervin Simon
Richard Simonson
Sandra Simonson
Kay Simpson
Elaine Sinness
Kirstin Skari
Laverne Slaamond
Gerald Lee Smith
Arline Snyder
Marlene Solberg
Eugene Staloch
Gertrude Staloch
Louis Staloch
Ann Stander
Frank Staskivige
Margery Steenerson
Edna Steffen
Frieda Steinke
Johnny Stellon
Leo Stellon
Marcus Stellon
Clara Stewart
MaryLou Stewart
Doris Storseth
Connie Strand
Florence Strander
Greg Stuart
Martin and Gertrude Susa
William T. Butcher
Judge Alfred Thompson
Arlys Timian
Evangeline Tulp

Carl V. Anderson
John Vaagene
Joy Vaagene
Richard Van Camp
Ted Vigesaa
Roger Vining
Eunice Vold
Mike Waldock
Yvonne Walstad
Thomas G. Wambach
Gerald & Kaye Westin
Long time teacher Kay Westin - Class of 1951 (Grenora)
Merle Widley
Walter "Bud" & Alice Will
Hazel Togstad Williams
Kevin, Kim Woinrowicz
Harold Wolfgram
Gordy Wolswick
Florian & Sara Wosick
Lenore Wright
Alexa Young
Jon & Cara Zacher
Frank Zeck
LaVern Zimmerman
Irene Zimprich
Dr. Dale A Henning
Dr. Steven & Linda Johnson

In Honor Of:

Mary Jane Schmaltz
Class of 1969 (Hatton)
Richard Stevens
Bernice Carlson
Michelle J. Wall
Cathy Clapp & Corrine Berg on their retirement
Jacob Petermann
Father Al Bitz
Class of '58 (Grenora)
Stanley Class of 1957
Christie Obenauer's Birthday
The 1959-1966 High School & Elementary students taught by Gerald & Ruby Bauer (Grenora)
Cameron K Fleck, Owner - Newvision Security, LLC
Erica Erickson
Mike Berry
Mariah Jenkins & St. Luke's Medical Center Therapy Dept. Crosby ND

We are here to help!

If you have any questions about charitable giving in North Dakota, the 40% State Tax Credit, or starting a fund at NDCF, please give us a call. There is no obligation and we are happy to help you.

More information can also be found on our website at www.NDCF.net.



Our Staff



Kevin J. Dvorak, CFP®
President & CEO
701-222-8349
Kevin@NDCF.net



Christi Stonecipher
Director of Communications
701-222-8349
Christi@NDCF.net



Vicky Ferderer
Accountant
701-222-8349
Vicky@NDCF.net



Deb Clark
Office Manager
701-222-8349
Deb@NDCF.net



John Heinen, CFRE
Development Director
West

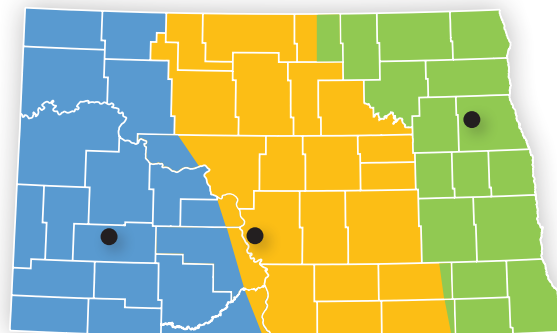


Kara Geiger, CFRE
Development Director
Central



Amy Stromsodt, CFRE
Development Director
East

Western ND Office
PO Box 1505
Dickinson, ND 58602-1505
701-590-4614 (cell)
John@NDCF.net



Eastern ND Office
PO Box 735
Larimore ND 58251
701-741-3193 (cell)
Amy@NDCF.net

Central ND Office
711 Riverwood Dr.
PO Box 387
Bismarck, ND 58502-0387
701-222-8349 (office)
Kara@NDCF.net

You Take the Lead: Donor-Advised and Field of Interest Funds

A Donor-Advised Fund at NDCF gives individuals, families and corporations great flexibility in their charitable giving, with minimal cost. A donor-advised fund allows you to make a charitable contribution, receive an immediate tax deduction (and potentially a state tax credit), and recommend grants from the fund over time. This type of fund provides convenience and flexibility by allowing you to support various charitable organizations over time. For many, this is an attractive alternative to a private foundation.



Our online portal makes it easy to recommend grants to your favorite charities from your donor-advised fund at NDCF.

A Field-of-Interest Fund at NDCF works in a similar manner except that the donor does not recommend which specific organizations receives the grants. Instead, the donor provides guidance to NDCF regarding which charitable areas he/she wishes to support (for example, the arts and youth programs) and lets NDCF review applications and make grant decisions based on that general direction.

NDCF makes it easy to be philanthropic - our staff handles all the paperwork, including an annual audit and filing the appropriate tax forms. You can make gifts into your donor-advised or field-of-interest fund at any time and choose when to give out the grants. In addition, gifts to your donor-advised or field-of-interest fund may be eligible for North Dakota's generous 40% State Tax Credit.

We can have a Fund set up in a matter of minutes - it's a simple, personalized process. To learn more, review the detailed information below, or contact one of our Development Directors at the left.

Creating the Fund It is very easy to establish a fund with NDCF and takes only a few minutes. Because NDCF already has 501(c)(3) status with the IRS, your gifts to the fund are tax-deductible to the fullest extent of state and federal law.

Building the Fund Once in place, you can make gifts of any size, at any time to your Donor-Advised or Field-of-Interest Fund. You can choose the amount of your gift, the type of gift and the timing of any gift to maximize your convenience and tax benefits. NDCF is structured to accept many different types of gifts including

- Cash
- Publicly traded or closely held securities
- Insurance policies
- Gifts from your IRA (the IRA Charitable Rollover is particularly attractive to donors aged 70.5 or older)
- Interests in Remainder or Lead Trusts
- Real property
- Agricultural commodities

Using the Fund The money in your endowed Donor-Advised Fund stays in the fund forever, generating earnings and interest. You can ask that grants be made from the Fund at any time in accordance with NDCF's granting policy and you can designate who will provide grant guidance when you are gone. NDCF's Board of Directors has final approval on all grants to ensure compliance with federal regulations governing charitable organizations.



Grants from your donor-advised or field-of-interest fund can go to support many different kinds of charitable organizations in North Dakota, whether you wish to support the arts, youth programs, healthcare in your hometown, your alma mater, or your church. Organizations that received grants from donor-advised funds at NDCF in 2019 include Central Cass School, for a new theatre as part of their new school building; Central Dakota Humane Society, Great Plains Food Bank, and Able, Inc.



How Does a Charitable Gift Annuity Work?

Get an Income for the Rest of Your Life,
Leave a Legacy for Tomorrow.

Gift of Assets
(with an immediate tax deduction!)

Donor

Charitable Gift Annuity

Remainder to Your Designated Fund at NDCF

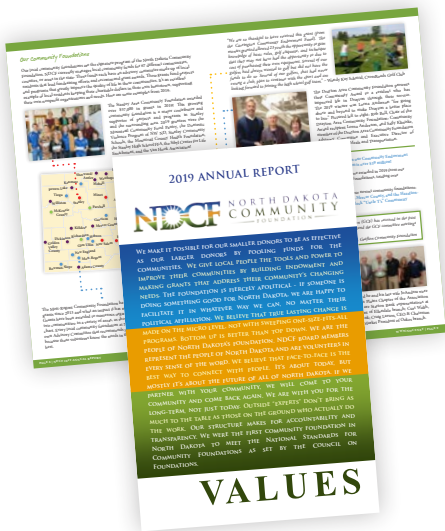
NDCF
NORTH DAKOTA COMMUNITY FOUNDATION

Fixed Income Payments for the Rest of Your Life
(a portion of which are tax-free!)

Not all annuities are the same. Call us for a free conversation about the differences. 701-222-8349

Former NDCF Board Members

Evan Lips <i>Bismarck</i>	Arnold L. Braaten <i>Minot</i>	Carol Hjelmstad <i>Reynolds</i>	Dan Liberda <i>Carrington</i>
M. Rosalie Lier <i>Fargo</i>	Jim Davis <i>Bismarck</i>	Cornelius Grant <i>Bismarck</i>	Rosemarie Myrdal <i>Edinburg</i>
Donald Schmid <i>Bismarck</i>	Wayne Leiner <i>Fargo</i>	Robert Schuller <i>Bismarck</i>	Neil Fedje <i>Cavalier</i>
Stanley M. Moore <i>Jamestown</i>	Karnes Johnson <i>Sentinel Butte</i>	Ray Hoffman <i>Bismarck</i>	H. Michael Hardy <i>Fargo</i>
Richard Crockett <i>Fargo</i>	Theodore Kessel, Sr. <i>LaMoure</i>	William Kretschmar <i>Venturia</i>	Jim T. Weisser <i>Linton</i>
John Hove <i>Fargo</i>	Daniel Lessard <i>Grafton</i>	Rollie Morud <i>Dickinson</i>	Patsy Thompson <i>Bismarck</i>
Ruth Everson <i>Bismarck</i>	David M. Gipp <i>Bismarck</i>	Jacque Schauer <i>Sterling</i>	Marie Arnold <i>Dickinson</i>
Richard T. Carley <i>Casselton</i>	Jan Berg <i>Jamestown</i>	Rita Staloch <i>Minnewaukan</i>	Rob Gayton <i>Bismarck</i>
Arden Burbidge <i>Park River</i>	Sarah Andrews Herman <i>Fargo</i>	Irma Dulmage <i>Leeds</i>	Anne Riske <i>Fargo</i>
J. Gerald Nilles <i>Fargo</i>	Mrs. Jo Jacobson <i>Alamo</i>	Joanne H. Ottmar <i>Jamestown</i>	Jennifer Rasch <i>New England</i>
T. A. Solheim <i>Minot</i>	Monty Burke, Sr. <i>McKenzie</i>	Agnes Palanuk <i>Dickinson</i>	Donald Oppedgard <i>Park River</i>
Marijo Shide <i>Larimore</i>	Mark J. Butz <i>Rugby</i>	George Cox <i>Grand Forks</i>	Diane Peyerel <i>Rural Penn</i>
Richard McGee <i>Minot</i>	Vernon E. Wagner <i>Bismarck</i>	Mary Kay Olson <i>Langdon</i>	Aaron Schmit <i>Williston</i>
Peter Nielsen <i>Grand Forks</i>	Francis Forster <i>Richardton</i>	Frank Keogh <i>Williston</i>	Steve Ottmar <i>Jamestown</i>
Dr. E. J. Hagan <i>Williston</i>	Keith Bjerke <i>Northwood</i>	Orlin Backes <i>Minot</i>	John Botsford <i>Grand Forks</i>
Justice Vernon Pederson <i>Bismarck</i>	Gerald J. Nilles <i>Fargo</i>	Tara Holt <i>Bismarck</i>	Becky Thatcher-Keller <i>Cooperstown</i>
Brooks Keogh <i>Keene</i>	Ray Hoffman <i>Bismarck</i>	Bill Marcil, Jr. <i>Fargo</i>	Christie Obenauer <i>Hazen</i>
William L. Guy <i>Bismarck</i>	John Pierson <i>Bismarck</i>	Linda Steve <i>Dickinson</i>	LouAnn Waliser <i>Lisbon</i>
T. A. Roney <i>Carrington</i>	Theodore Kessel <i>LaMoure</i>	Warren Robinson <i>Bismarck</i>	Douglass Prchal <i>Bismarck</i>
Carol Jacobson <i>Alamo</i>	Howard Schmid <i>Oberon</i>	David "White Thunder" Trottier <i>Dunseith</i>	Dawn Keeley <i>Grafton</i>
B. P. McDermott <i>Grand Forks</i>	Dean Lenaburg <i>Valley City</i>	Lowell Overbo <i>Ashley</i>	Diane Baumbach <i>Emerado</i>
Dr. Dean Strinden <i>Williston</i>	Marlys Prince <i>Regent</i>	Chad Peterson <i>Fargo</i>	Sheila Palzcewski <i>Bowman</i>
Wade Arnegard <i>Dickinson</i>	Taylor Barnes <i>Jamestown</i>	Dennis Johnson <i>Watford City</i>	Scott Swenson <i>Watford City</i>
Gloria Legrid <i>Jamestown</i>	Frank P. Keogh <i>Williston</i>	Lynn Nelson <i>LaMoure</i>	Nancy Johnson <i>Fargo</i>
Dale Anderson <i>Fargo</i>	Duaine Espesgard <i>Minot</i>	Joe Hauer <i>Bismarck</i>	
Warren DeKrey <i>Bismarck</i>	Russell Stegman <i>Cavalier</i>	Barbara Mayer <i>Regent</i>	



You are receiving this report because you either...

1. Have supported one of NDCF's component funds in the past.
 2. You are a pretty important person & we thought you'd want to know this stuff.
- or
3. Both!

Thank you!

Help us keep our mailing list current!

- Is your address incorrect?
- Are you receiving duplicate copies of this report?
- Would you like to be removed from our mailing list, or would you like to add someone?

Let us know:

✉ Email us at info@NDCF.net

☎ Call 701-222-8349

✉ Or Write to

North Dakota Community Foundation
PO Box 387
Bismarck, ND 58502-0387