



## 2020 ANNUAL REPORT



*Your hardest times often lead to the greatest moments of your life. Keep going. Tough situations build strong people in the end.*

- Roy T. Bennett



Photo by DeVane Webster of Beulah, ND, StoneyLonesomePhotos.com

### Mission Statement

The mission of the North Dakota Community Foundation is to improve the quality of life for North Dakota’s citizens through charitable giving and promoting philanthropy.

### About the North Dakota Community Foundation

The North Dakota Community Foundation was incorporated in 1976. NDCF is an IRS designated 501(c)(3) statewide, public, nonprofit, tax-exempt corporation that receives and distributes charitable funds to support a wide range of programs that benefit North Dakotans.

NDCF was formed by a group of concerned citizens who were looking for a general charitable vehicle to build endowment to support the nonprofit sector in the state. Initial support for the Foundation came from the Otto Bremer Foundation (now the Otto Bremer Trust), the Northwest Area Foundation, the Norwest Bancorporation, the North Dakota Bremer Banks and the Bush Foundation.

NDCF has continued to grow and flourish over the years thanks to the support of thousands of individuals and businesses who want to make North Dakota a better place to live, work, and play.

### National Standards

The National Standards Seal represents official confirmation from the Community Foundations National Standards Board that NDCF has met the most rigorous standards for community foundations. The seal affirms NDCF’s commitment to financial security, transparency, and accountability and says that our grantmaking includes an open, competitive process designed to address the changing needs of our community.



Want an easy way to support the work of NDCF? When you shop online, go to smile.amazon.com and choose “North Dakota Community Foundation” as the organization you wish to support. You pay the same price for items as the regular Amazon site, but Amazon donates a portion of the purchase price to NDCF to support our work across the state!



This and past issues of the North Dakota Community Foundation’s Annual Report are available on our website at NDCF.net



### About Our Year

- NDCF Board of Directors ..... 4
- Letter from our Chair & CEO..... 5
- 2020 At-A-Glance..... 6
- Our Community Foundations..... 8
- Our Statewide Greatest Needs Fund..... 10
- New Funds in 2020..... 12

### Financial Reports ..... 15

- Gifts Received in 2020 ..... 18
- Grants Awarded in 2020..... 23
- Endowment Assets of Our Funds ..... 44

### Donors & Memorials ..... 54

### Giving Back/Leaving a Legacy

- Here to Help: Our Staff..... 68
- Organizational Endowment Funds: Ensure Your Nonprofits Future..... 69



### NDCF Board of Directors

NDCF is governed by a 15-member Board of Directors. They are volunteers and receive no financial compensation for their service on the Board. They are elected from the population of North Dakota and are selected to represent a broad cross-section of North Dakotans. They can serve two three-year terms and then must leave the Board. This structure ensures that the North Dakota Community Foundation is truly the people of North Dakota's Foundation.

If you are interested in serving on the NDCF Board, please contact our Bismarck office. We keep a list of potential board members for consideration.

### 2020 NDCF Board Of Directors:

#### Chairperson

Vicki Kunz, Insurance Risk Manager, Retired..... Bismarck

#### Vice Chairperson

Tim Ottmar, Attorney..... Jamestown

#### Secretary-Treasurer

Chris Griffin, Land Company Owner..... Grand Forks

#### Directors

Justin Forde, Director of Public Affairs .....Argusville

Chantel Southam, CPA..... Mohall

Judy Estenson, Nurse ..... Warwick

Bonnie Krause, CEO/GM of Telecommunications Company, Retired..... Hazen

Ann Poeschel West, Financial Advisor..... Grafton

Breanne Carlson, Loan Officer .....Lisbon

Bruce Dolezal, Regional Bank President..... Dickinson

Troy Walters, Superintendent of Schools .....Twin Buttes

Patrick Kelly, Dentist..... Bowman

David Meyer, CEO of Farm/Construction Equipment Dealer Group..... Fargo

Terri Lang, Former Newspaper Reporter..... Strasburg

Carla Peltier, Teacher, Retired..... Belcourt

Spencer Larson, Farm Loan Officer, Retired\*..... Linton

Georgia Artz, Director of Public Health Nursing\* ..... Bottineau

Michael Killoran, Banker, Retired\* .....Casselton

\* term ended April 2020

### Chair & CEO Letter

#### 2020 Annual Report

“May you live in interesting times” - so goes the “blessing”, which is actually considered an ancient curse. Well, 2020 was definitely an interesting year with another curse, wreaking havoc around the world. What does this have to do with the North Dakota Community Foundation and this report? If you read to the end of this letter, we’ll try to illustrate.

NDCF’s main goal has always been to build endowment which generates consistent grant monies to meet the changing needs of our state. Our donors have built this financial resource through literally thousands of gifts, large and small, in order to improve the quality of life for the citizens of our state today and forever. Roughly 45% of our endowment base are unrestricted funds available to meet the changing needs of our communities and in the state.

In 2020, the value of these flexible, consistent, financial resources was brought into focus when the NDCF Board decided to use the entire 2020 Statewide Greatest Needs grantable balance for COVID-19 relief grants across the state. The bulk of those grants went out for relief before any government assistance was available to support food banks, childcare facilities, mental health, personal protection equipment and other pandemic related needs. Also, many of our local community foundation committees made the same decision, that the most pressing needs in their communities were pandemic related and they applied their grants quickly and effectively to meet those needs.

Because we had built our Statewide Greatest Needs Fund and our local community foundations to the point where they could provide monies without having to raise another dime in this dire circumstance, we were able to make a difference all across the state in the area of critical needs that were not yet addressed by other means.

Later, generous donors and businesses committed hundreds of thousands of dollars to our COVID-19 Community & Nonprofit Response Fund, providing additional resources to desperate nonprofits. We are amazed, although not surprised, at the wonderful generosity of North Dakotans who gave without hesitation. All together – our endowment earnings and COVID donations – resulted in over \$750,000 in COVID-19 Response grants.

Sometimes, it can be difficult to “sell” the idea of permanent endowment. 2020 showed why it is an important part of the giving spectrum. The money was there when the ability to raise additional money was limited. Please look through this report to see the types of grants that we were able to make from our Statewide Greatest Needs Fund and from our local community foundations from the earnings off those endowment funds. When you see those grants and how they were used, we think that you will agree that flexible, permanent endowment resources do make a difference in “normal” times and in “interesting” times.



2020 Board Chair  
Vicki Kunz

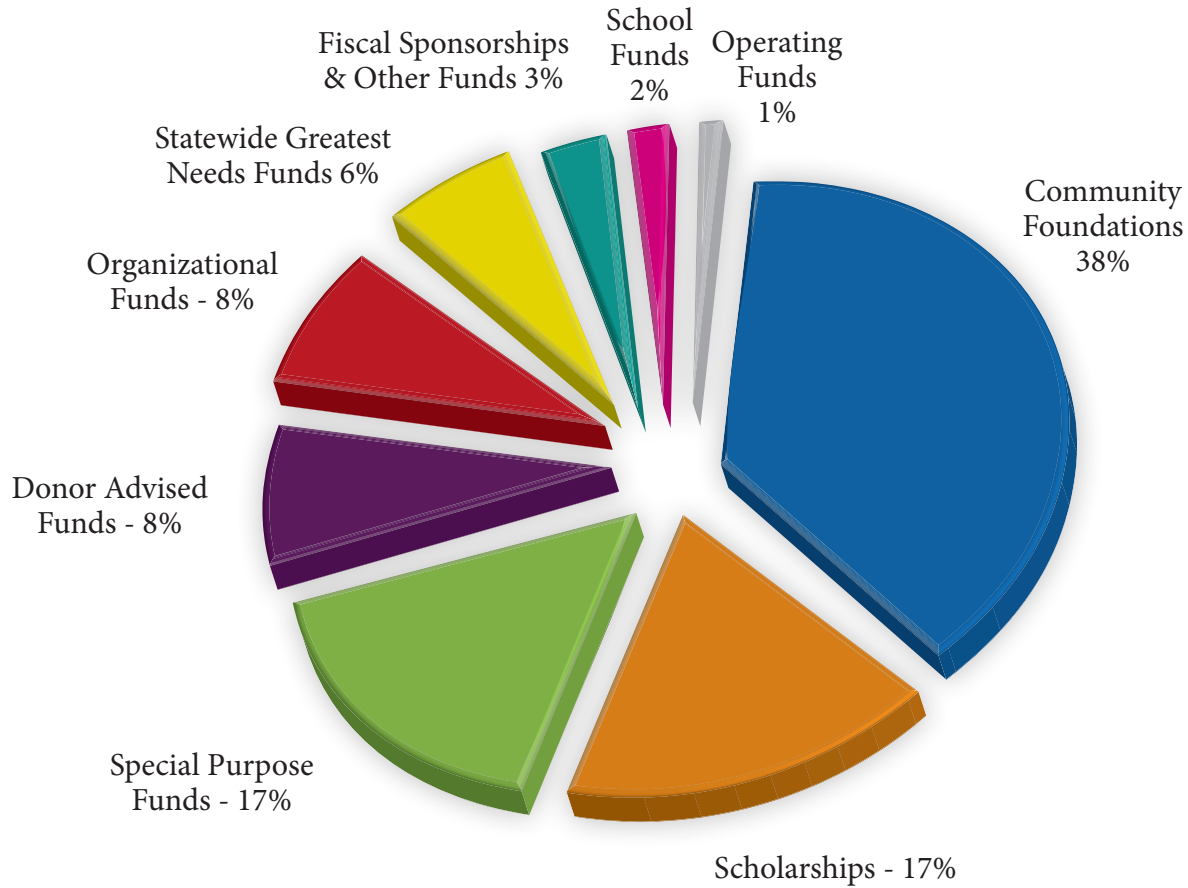


President & CEO  
Kevin J. Dvorak

*NDCF 2020 At-A-Glance*

**Total Assests by Fund Type**

Our \$115.9 million in total assets are held in the following types of funds:



**2,375 gifts, totaling over \$7.3 million** to NDCF funds in 2020!

**\$589,000 awarded in scholarships** to North Dakota youth and seven NEW scholarship funds started in 2020.

**36 New Funds** started at NDCF in 2020 to improve the quality of life in our state, including the Dickinson Public Library Foundation Endowment.

Over **\$7.4 million in grants and charitable disbursements...**for projects and programs all across the state, including a grant from the Hope Area Community Foundation to purchase new targets and arrows for the Hope School's archery program.



*Here are some highlights from 2020!*

NDCF created the North Dakota COVID-19 Community & Nonprofit Response Fund in 2020 to provide a way for generous donors to provide resources to nonprofits hit hard by the pandemic and its related mitigation efforts. Kevin Dvorak announced the creation of the fund at Governor Burgum's daily press conference on April 2, 2020.



**W E L C O M E**

We welcomed Brent Winkelman as our new Accountant at our Bismarck office in September and also hired Jana Berndt to serve as the part-time Development Director specifically for the Richland Wilkin Community Foundation.



*This is Jana along with Chef Kyle Armitage at a recent fundraising event.*

We hosted the 53rd Annual North Dakota Picnic in Arizona on March 1, 2020 (before everything shut down!). Over 2,500 attended the event and had a fabulous time. The 2021 ND Picnic in AZ was canceled due to COVID-19 concerns, but we are looking forward to seeing everyone in 2022!



**2022 ND Picnic in AZ**  
 Sunday, March 6  
 10 am to 2:30 pm  
 Red Mountain Park, Mesa, AZ  
*We hope to see you there!*

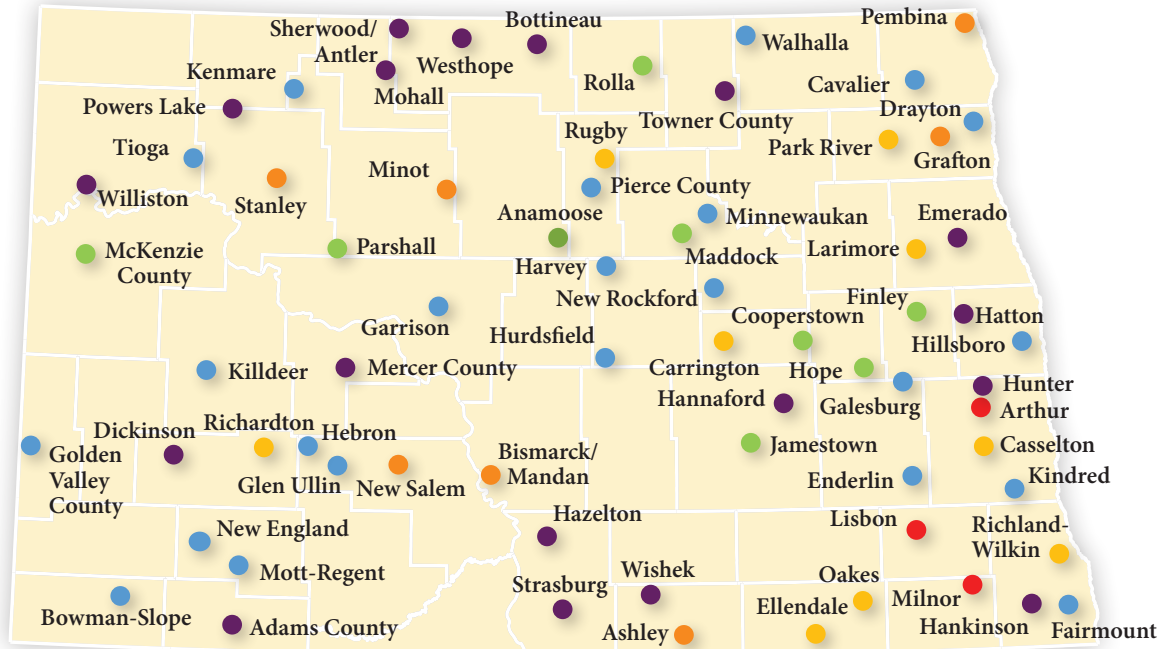


*We had attendees from almost every county in North Dakota!*

Follow the ND Picnic on Facebook:  
<https://www.facebook.com/ndpicnic/>

## Our Community Foundations

Our local community foundations are the signature program of the North Dakota Community Foundation. NDCF currently manages local community funds for 69 different communities, counties, or areas in the state. These funds each have an advisory committee made up of local residents that lead fundraising efforts and recommend grant awards. These grants fund projects and programs that greatly improve the quality of life in these communities. It's an excellent example of local residents keeping their charitable dollars in their own hometown, supporting their own nonprofit organizations and needs.



- \$5 Million +
- \$1,000,000 – \$4,999,999 in total assets
- \$500,000 – \$999,999 in total assets
- \$250,000 – \$499,999 in total assets
- \$100,000 – \$249,999 in total assets
- 0 – \$99,999 in total assets

- **Total assets in our Community Endowment Fund Program is over \$46 million!**
- **375 grants** were awarded in 2020 from our Community Endowment Funds, totaling almost **\$1.5 million!**
- Welcome to our newest community foundation: **The Judy Mae Hauff Memorial Fund for Hunter, ND!**

### BOWMAN

Thank you to our local community foundation advisory committees for leading fundraising efforts and recommending grant awards every year! Pictured is our Bowman & Slope County Community Foundation Advisory Committee, along with NDCF Development Director John Heinen, reviewing grant applications in September of 2020.



## What did our community grants help fund in 2020?



### GRAFTON

Training for safe rescue/recovery tactics in the event of a grain bin entrapment.



### TIOGA

New recycled plastic hex tables for their outdoor pavilions that are easier to clean.



### DICKINSON

Laptops and supplies for their local medical clinic.



### LISBON

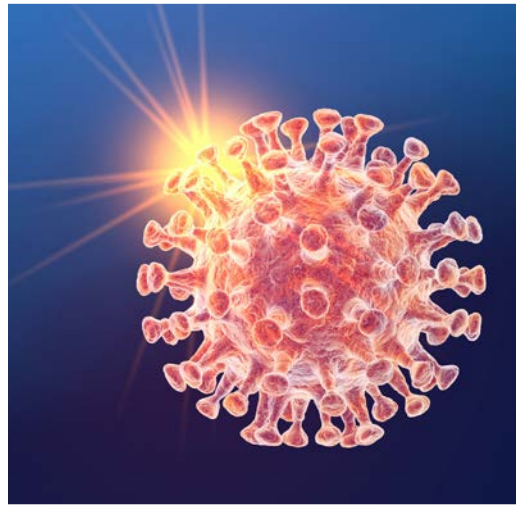
Materials and supplies so students could plan, construct, and deliver 100 concrete monuments (inscribed with names and dates) to the Oakwood Cemetery for previously unmarked graves.

## Statewide Greatest Needs Fund

In April of 2020, the North Dakota Community Foundation created the COVID-19 Community and Nonprofit Response Fund to provide a way for businesses and individuals to help North Dakota organizations responding to the pandemic.

The NDCF Board of Directors dedicated their entire 2020 Statewide Greatest Needs grant monies to the COVID-19 relief grants. Many generous individuals, corporations, foundations and others also contributed to the fund to provide over \$750,000 in grant awards to organizations and impacted individuals across the state.

NDCF focused its grantmaking on areas that were not receiving substantial government help and distributed the money in four different grant rounds, beginning in April of 2020 before government assistance became available. These grants helped many organizations “bridge the gap” from the onset of the pandemic and its economic effects on their work to the time when federal assistance became available. The Fund later provided assistance to nonprofits providing crucial services, primarily food pantries, as the impacts of the pandemic and resulting economic downturn continued.



The Best Friends Mentoring Program (BFMP) in Dickinson used their COVID-19 Response grant from NDCF to pay for the costs associated with switching to virtual mentoring. All 100+ of their mentor/kids matches converted to meeting online! These relationships and conversations are so important, especially during a time of social distancing, and especially for kids who need additional support and care. Best Friends also lost two major fundraising events this spring, resulting in a loss of almost \$75,000 in expected revenue.



*Ave Maria Village (a 100-bed long term care facility in Jamestown) received a COVID-19 grant to help purchase additional PPE items masks, gowns, gloves, sanitizer, and cleaner to help keep their residents safe while staff members provided loving care.*



Great Plains Food Bank



Minot Meals on Wheels

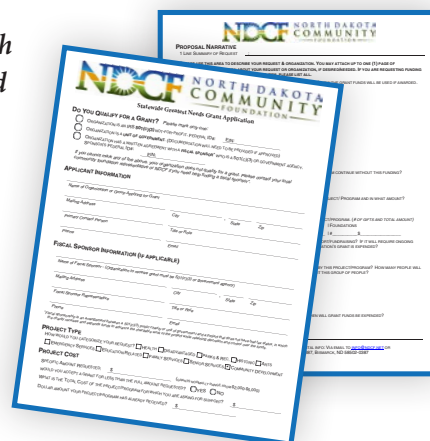
Food pantries all across the state saw dramatically increased need for their services as the pandemic and the effects of mitigation efforts impacted families. NDCF provided grants to many food pantries and senior meal programs in North Dakota in 2020.



Garrison Food Pantry

*Would you like to make a difference in communities across North Dakota? Make a donation to our Statewide Greatest Needs Fund in 2021 and you will ensure there are resources available to fund programs, finish projects or fight pandemics in our great state! You can also consider planned giving options to support this fund, including charitable gift annuities, a gift in your will, or making this fund the beneficiary of your life insurance policy. Thank you!*

*To apply for a SWGN grant, go to [NDCF.net/receive/swgn](https://www.ndcf.net/receive/swgn). Applications are due by July 31, 2021.*



## New Funds

NDCF manages over 750 funds for the betterment of North Dakota citizens and their communities. We were pleased to welcome the following funds in 2020:

### NEW COMMUNITY FOUNDATIONS

Community foundations are permanent, flexible, financial resources for their communities and surrounding area. The grant money they provide to local projects and programs every year can make a huge difference in the quality of life for their residents. Over time, these endowment funds can become a substantial source of funding for their communities. Some communities also establish non-endowment funds for special projects in their area. The following community funds were started in 2020. NDCF manages 69 local community foundations in North Dakota.

- Bowman/Slope Power of 100 Non-Endowment Fund
- Judy Mae Hauff Memorial Fund (for Hunter, ND)
- William E. Kretschmar Charitable Fund for Ashley

### NEW SCHOOL FUNDS

Numerous school foundations have been established in the last several years to provide additional resources to cash-strapped school districts. The additional funding from our school foundations fill in the gaps, providing everything from supplies to playground equipment to musical instruments to teacher housing. They can also provide long-term stability and resources for the school. Welcome to these new school foundations!

- McKenzie County Public School Dist #1 Workforce Skills Fund Non-Endowment
- McKenzie County Public School Foundation District #1 DARE Project Fund
- New Rockford-Sheyenne Public School Non-Endowment Fund
- Wyndmere School Foundation



*The New Rockford-Sheyenne Public School started a non-endowment fund for a gym expansion project and raised over \$130,000 in 2020. Go Rockets!*



*Bill Kretschmar was an attorney and community leader from Venturia, ND, and served in the North Dakota Legislature for several decades. He was also a member of the North Dakota Community Foundation's Board of Directors for six years. Bill specified in his will that all his property should be given to NDCF for the benefit of the community of Ashley, ND. This gift totaled more than \$1 million and will generate grant dollars for Ashley and the surrounding area forever.*

### NEW SCHOLARSHIPS

With the rising costs of higher education, more and more college-bound students need a helping hand. Thank you to the generous donors who established scholarships for North Dakota students in 2020 through NDCF.

### NEW SCHOLARSHIPS *continued*

- Gerald Ringdahl Memorial Scholarship
- Jim Lawler Memorial Scholarship Fund
- Lynn Berg Memorial Scholarship Fund
- ND Aviation Association Scholarship Fund
- ND Aviation Association Scholarship Non-Endowment Fund
- Paul Daniel Hougen Memorial Athletic Scholarship Fund
- Personal Fortitude & Financial Peace Scholarship Fund



*Jim Lawler, long-time manager of the Mandan Municipal Airport, passed away in 2020 at the age of 61. His life was devoted to promoting local and regional aviation and helping the airport to thrive. His aviation family established this fund in his name to honor him and his contributions to the field of North Dakota aviation. Scholarships will be awarded to ND students pursuing advanced education in the aviation field, with preference given to those pursuing a degree in Airport Management.*

### NEW ORGANIZATION ENDOWMENT FUNDS

Endowment funds provide long-term financial resources for organizations and can be an integral part of how they fund their operations and special projects every year. The stability of an endowment fund means the organization's mission can continue for countless generations. Welcome to the following new organization endowment funds:

- Dickinson Public Library Foundation Endowment
- Dickinson Rotary Project Non-Endowment Fund
- Enchanted Hwy Foundation Project Non-Endowment Fund
- McKenzie County Right To Life Endowment



*The Enchanted Hwy Foundation Project Non-Endowment Fund was established to support projects associated with the Enchanted Highway – one of North Dakota's most famous stretches of road!*

### NEW FISCAL SPONSORSHIPS

NDCF often serves as a fiscal sponsor for organizations, especially new causes just starting out. This allows people to focus on their passion instead of worrying about establishing 501(c)(3) status, tax implications, or other legal and administrative issues. NDCF served as the fiscal sponsor for the following funds created in 2020:

- Devils Lake Curling Club
- Heritage Art Tunnel Project Fiscal Sponsorship
- ONEOK Hospitality Employee COVID-19 Assistance Fund
- Southern Valley Economic Development Authority



*The City of Devils Lake started a fiscal sponsorship at NDCF to raise money to repair and/or replace equipment at the Devils Lake Curling Club.*

### NEW SPECIAL PURPOSE (RESTRICTED) FUNDS

Some funds are established at NDCF with a specific cause in mind. These special purpose or "restricted" funds can be related to a one-time disaster response or support specific charities and projects permanently. The following special purpose funds were created at NDCF in 2020:



The Lisbon Community Endowment Fund created the Sheyenne River Speedway Matching Fund to make improvements at the speedway and will match all gifts up to \$40,000.

NEW SPECIAL PURPOSE (RESTRICTED) FUNDS *continued*

- Dewayne & Mary Knoshaug Tioga Museum Non-Endowment Project Fund
- Halling Cemetery Association Endowment Fund
- Shawn Flaherty Memorial Fund
- Sheyenne River Speedway Matching Fund

**NEW FIELD OF INTEREST FUNDS**

Field of Interest funds award grants to organizations that provide services in a certain area – for example the arts, youth, or senior services. These field of interest funds were created in 2020 to forever support their donor’s intentions.

- AMKO Charitable Endowment Fund
- Norman & Mattie Lou Weckerly Charitable Fund

AMKO Advisors created an endowment fund to assist local governments in improving their function and efficiency and to improve their community.



**NEW DONOR-ADVISED FUNDS**

Several families established donor-advised funds in 2020 and recommend where their grant dollars should go every year. Donor-advised funds can be either permanently endowed or non-endowment funds, depending on the donor’s desires.

- Fisketjon Family Charitable Fund
- LS Meehl Community Growth Fund

**NEW GIFT ANNUITIES**

Charitable Gift Annuities provide an income for life to the donor and a gift to the causes that are most important to them when they’re gone. CGAs are becoming an increasingly popular charitable-giving tool. Six Charitable Gift Annuities were created at NDCF in 2020.

The Norman and Mattie Lou Weckerly Charitable Fund was created last year from the remainder of Norman and Mattie Lou’s three Charitable Gift Annuities they had established at NDCF. Norman was a great advocate for annuities and said many times that anyone over the age of 70 looking for income should have at least one CGA.

The synopsis of the Weckerly’s statistics of their three CGAs, established in 2008, 2015, and 2016, show the potential for this charitable-giving vehicle.\*

**WECKERLY ANNUITY STATISTICS**

Initial Gifts to Establish the CGAs: \$870,000

Total Annuity Payments to the Weckerly’s over the years: \$423,910

Remainder after their passing (used to create the Norman and Mattie Lou Weckerly Charitable Fund): \$1,238,391

Total annuitant payments and remainder from their \$870,000 “investment”: \$1,662,301

In addition, Norman and Mattie Lou received tax benefits from the contributions: an initial tax deduction, the ND tax credit, and a portion of their annuity payments every year were considered tax-free.

\* This real-life example of a CGA does not guarantee future returns. NDCF does not provide legal or tax advice.



*2020 Financial Reports*

The NDCF Board of Directors engaged an independent certified public accounting firm to audit the Foundation’s modified cash basis financial statements for the year ended December 31, 2020. The auditors have issued an unmodified opinion dated April 1, 2020, on the modified cash basis financial statements presented on pages 16 & 17. Copies of the audit are on file at the Foundation’s office for inspection.



**The North Dakota Community Foundation  
Statement of Assets, Liabilities, and Net Assets -  
Modified Cash Basis**

December 31, 2020  
(with comparative totals for December 31, 2019)

ASSETS	Memorandum Only	
	2020	2019
Cash and cash equivalents	\$ 4,094,392	\$ 5,011,635
Investments, managed by trust companies, at market	102,102,495	88,704,235
Other investments, at market	4,681,267	7,638,704
Mineral rights	1,113,147	1,385,241
Land & Stock Awaiting Sale	4,504,227	3,848,200
Office equipment & vehicles, at cost, less accumulated depreciation of \$81,240 in 2020 and \$148,296 in 2019	42,282	30,512
<b>Total assets</b>	<b>\$ 116,537,810</b>	<b>\$ 106,618,527</b>
<b>LIABILITIES AND NET ASSETS</b>		
Liability to annuitants for charitable gift annuities and charitable remainder trust	\$ 625,633	\$ 735,595
Funds held for scholarship commitment	625,633	-
<b>Total liabilities</b>	<b>735,595</b>	<b>735,595</b>
Net assets		
Without donor restrictions	10,949,761	14,131,639
With donor restrictions	104,962,416	91,751,293
<b>Total net assets</b>	<b>115,912,177</b>	<b>105,882,932</b>
<b>Total liabilities and net assets</b>	<b>\$ 116,537,810</b>	<b>\$ 106,618,527</b>

**The North Dakota Community Foundation  
Statement of Revenues, Expenses, and Changes  
in Net Assets - Modified Cash Basis**

For the year ended December 31, 2020  
(with comparative totals for the year ended December 31, 2019)

	Without Donor Restrictions	With Donor Restrictions	2020	Memorandum Only 2019
	<b>REVENUES</b>			
Gifts and grants	\$ 2,494,408	\$ 4,810,340	\$ 7,304,748	\$ 15,304,609
Interest and dividend income	125,608	1,522,310	1,647,918	1,780,229
Income on minerals	-	134,160	134,160	277,107
Split interest changes	282,182	-	282,182	(50,048)
Miscellaneous	29,040	211,547	240,587	17,142
Net Assets Released from Restrictions	3,621,098	(3,621,098)	-	-
<b>Total Revenues</b>	<b>6,552,336</b>	<b>3,057,259</b>	<b>9,609,595</b>	<b>17,329,039</b>
<b>EXPENSES</b>				
Program expenses:				
Grants paid	8,006,995	-	8,006,995	4,371,527
Charitable project and program expenses	1,295,778	-	1,295,778	467,821
Total program expenses	9,302,773	-	9,302,773	4,839,348
Supporting service expenses				
Management and general	496,459	-	496,459	468,387
Fundraising	433,465	-	433,465	438,496
Total supporting service expenses	929,924	-	929,924	906,883
<b>Total expenses</b>	<b>10,232,697</b>	<b>-</b>	<b>10,232,697</b>	<b>5,746,231</b>
Revenues over (under) expenses	(3,680,361)	3,057,259	(623,102)	11,582,808
Net unrealized gains (losses) on valuation changes	-	(272,094)	(272,094)	26,546
Net realized gains (losses) on long-term investments	61,031	1,173,040	1,234,071	2,757,484
Net unrealized gains (losses) on long-term investments	437,452	9,252,918	9,690,370	8,204,629
<b>Total net unrealized and realized gains (losses)</b>	<b>498,483</b>	<b>10,153,864</b>	<b>10,652,347</b>	<b>10,988,659</b>
<b>CHANGE IN NET ASSETS</b>	<b>(3,181,878)</b>	<b>13,211,123</b>	<b>10,029,245</b>	<b>22,571,467</b>
<b>NET ASSETS, BEGINNING OF YEAR</b>	<b>14,131,639</b>	<b>91,751,293</b>	<b>105,882,932</b>	<b>83,311,465</b>
<b>NET ASSETS, END OF YEAR</b>	<b>\$ 10,949,761</b>	<b>\$ 104,962,416</b>	<b>\$ 115,912,177</b>	<b>\$ 105,882,932</b>

# The North Dakota Community Foundation Schedule of Gifts Received

Year Ended December 31, 2020

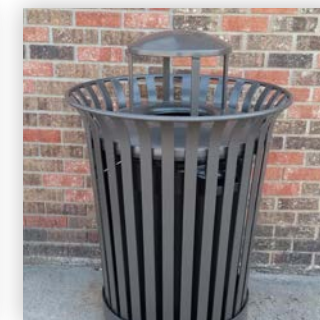
\*\*\*Denotes New Funds

### NDCF Statewide Greatest Needs & Field of Interest Funds

AMKO Charitable Endowment Fund***	\$ 10,000
Directors Fund	600
Norman & Mattie Lou Weckerly Charitable Fund***	871,420
Unrestricted Fund	10,704
<b>Total Gifts to NDCF Statewide Greatest Needs &amp; Field of Interest Funds</b>	<b>892,724</b>

### Community Funds

Adams County Community Foundation	15,676
Anamoose Area Community Foundation	7,525
Ashley - William E Kretschmar Charitable Fund for Ashley***	1,072,418
Bismarck/Mandan Community Foundation	5,412
Bottineau Community Endowment Fund	10,000
Bowman/Slope Community Foundation	11,315
Bowman/Slope Power of 100 Non-Endowment Fund***	6,112
Carrington Community Endowment Fund	8,515
Casselton Community Endowment Fund	8,950
Cavalier Community Foundation	11,621
Cavalier Non-Endowment Fund	2,250
Cooperstown Community Foundation	2,802
Dickinson Area Community Foundation	8,475
Dickinson Area Community Foundation Non-Endowment Fund	2,400
Dickinson Area Community Foundation Project Fund	5,000
Drayton Area Community Foundation	2,800
Ellendale Area Community Foundation	106,991
Emerado Community Endowment Fund	9,700
Emerado Community Non-Endowment Fund	1,750
Enderlin Area Community Endowment Fund	1,308
Enderlin Community Non Endowment Fund	2,027
Fairmount Community Endowment Fund	1,000
Finley Community Endowment Fund	2,780
Galesburg Area Foundation	250
Garrison Area Community Foundation	5,000
Glen Ullin Area Community Foundation	24,782
Golden Valley County Community Foundation	5,450
Grafton Community Foundation	2,800
Hankinson Community Endowment Fund	575
Hannaford Area Community Foundation	20
Harvey Area Community Foundation	125
Hatton Area Community Foundation	31,334
Hatton Area Community Foundation Non-Endowment	2,000
Hazleton-Moffit-Braddock "Uncle T's" Community Foundation	11,375
Hillsboro Community Foundation	3,137
Hope Area Community Foundation	1,900
Hurdsfield Community Endowment Fund	200
Hunter - Judy Mae Hauff Memorial Fund***	25,000
Kenmare Area Community Foundation	12,211
Killdeer Area Community Foundation	10,000
Kindred Area Community Foundation	3,837
Larimore Community Endowment Fund	4,751
Lisbon Community Endowment Fund	10,767
Maddock Community Foundation	3,882
McKenzie County Community Foundation	38,025
McKenzie County Community Foundation Non-Endowment Project Fund	5,300



*The Milnor Area Community Foundation made a grant last spring to the City of Milnor to replace benches and waste receptacles in their downtown business district, and an additional grant to the Milnor Merchants Club for flowers along Main Street. Thank you to Dale and Russell Brown for leaving gifts to this community in their estates to support grants like these!*

Mercer County Community Endowment Fund	\$ 25,100
Mercer County Community Project Fund Non-Endowment	500
Minot Community Endowment Fund	500
Mohall Area Community Foundation	250
Mott-Regent Community Foundation	350
New Rockford Community Foundation	2,789
New Salem Area Community Foundation	1,052
Oakes Area Community Foundation	104,684
Park River Community Endowment Fund	5,875
Parshall Area Community Foundation	14,330
Powers Lake Community Foundation	5,100
Richardton Area Community Foundation	7,635
Richland Wilkin Community Foundation Annual Campaign Fund	55,140
Richland Wilkin Community Foundation	6,650
Rolla Community Endowment Fund	25,447
Rugby Community Endowment Fund	9,588
Sherwood/Antler Community Foundation	409
Sherwood/Antler Community Fund Non-Endowment	5,078
Stanley Area Community Foundation	154,540
Strasburg Area Community Foundation	200
Tioga Community Foundation	238
Walhalla Area Community Foundation	675
Wishek Area Community Foundation	12,398
<b>Total Gifts to Community Funds</b>	<b>1,948,076</b>

### Scholarship Funds

Benjamin Berg Memorial Scholarship Fund	6,054
Bismarck Rotary Club Scholarship Fund	11,798
Clarence Johnson/Eunice Iwen Scholarship Fund	10,000
Curtis Stern Memorial Scholarship Fund	200
Dawn Marie Stoik Memorial Athletic Scholarship Fund	53
Donald and Irene Metzen Scholarship Fund	6,667
Donald B Sass Scholarship Fund	2,085
Donna Maston Charitable Scholarship Fund	1,000
Dushinske & Jamison Water Resources Scholarship Fund	4,918
Esther Hample Scholarship Fund	2,363
First State Bank of ND Scholarship Fund	4,000
Garry Opp Memorial Scholarship Fund	750
Gerald Ringdahl Memorial Scholarship***	25,000
Harold & Eldeane Johnson Scholarship Fund	6,667
Helen & Everett Barta Scholarship Fund	515
Hettinger Class of 1996 Memorial Scholarship Non-Endowment	900
Holli Kautzman Memorial Scholarship Fund	10,000
Jeff Burgess Memorial Scholarship Fund	1,130
Jim Lawler Memorial Scholarship Fund***	1,717

NDCF was proud to nominate Mark Meiers for the 2020 Philanthropist of the Year award from the Association of Fundraising Professionals – Northern Plains Chapter and so pleased when he was chosen as the recipient! Mark is founder and Executive Director of Heaven’s Helpers Soup Café in Bismarck, which serves free meals to over 300 people a day. The organization has faced many challenges over the years, including the current pandemic, but it continues to thrive under Mark’s passionate and dedicated leadership. Congratulations, Mark!



John E Conneran Memorial Scholarship	\$	1,119
Kirstin Skari Memorial Scholarship Fund		500
Lisa Kraft Memorial Scholarship Fund		442
Lloyd A Engh North Star Masonic Lodge Fund		263
Lynn Berg Memorial Scholarship Fund***		50,000
Monroe Scheflo Scholarship Fund		55
ND Aviation Association Scholarship Fund***		100
ND Aviation Association Scholarship Non-Endowment Fund***		5,532
ND Career & Technical Education Endowment Fund		225
NDCF/ND Nurses Association Scholarship Fund		575
ND Veterinary Medical Association Scholarship Fund		6,273
ND Veterinary Medical Association Scholarship Non-Endowment Fund		2,581
North Dakota Nurse Practitioner Association Scholarship Fund		315
Paul Daniel Hougen Memorial Athletic Scholarship Fund***		5,566
Personal Fortitude & Financial Peace Scholarship Fund***		1,260
Raider Scholarship Fund		150
Rick & Nancy Warner Bigler Scholarship Fund		1,030
Ronald D Liudahl Scholarship Fund		20
Rugby High School Alumni Scholarship Fund		100
Tiny & Joyce Gebhardt Scholarship Fund		155
Tom & Ruth Bettenhausen Scholarship Fund		10,000
Travis Allen Hohbein Memorial Scholarship Fund		474
US Durum Growers Association Scholarship Fund		1,053
<b>Total Gifts to Scholarship Funds</b>		<b>183,605</b>

**School Funds**

Alexander Public School Foundation Fund	3,440
Carrington Public School Fund	5,000
Grenora Public School Foundation Fund	11,077
Kulm Public School Foundation Fund	6,958
Kulm Public School Foundation Non-Endowment Fund	3,000
Lidgerwood Public School Project Non-Endowment	8,629
Lisbon Public Schools Endowment Fund	5,258
McKenzie County Public School Dist #1 Foundation Food Service Project Fund	21,432
McKenzie County Public School Dist #1 Foundation Fund Non-Endowment	4,953
McKenzie County Public School Foundation Dist #1 Academic Project Fund	4,524
McKenzie County Public School Foundation District #1 DARE Project Fund***	3,500
New Rockford-Sheyenne Public School Non-Endowment Fund***	140,167
Park River Area Education Foundation - Endowment	35,200
Powers Lake Public School Foundation	1,000
Ray-Nesson Public School Endowment	35
Wahpeton Alumni Foundation	3,890
Will Athletic Complex Renovation	38,000
Wyndmere School Foundation***	10,025
<b>Total Gifts to School Funds</b>	<b>306,088</b>

**Organization Funds**

Badlands Ministries Endowment Fund	10,000
Catholic Charities North Dakota Endowment Fund	5,000
Cooperstown Bible Camp Endowment Fund	32,062

Dickinson Public Library Foundation Endowment***	\$	350,000
Dickinson Rotary Charitable Endowment Fund		2,237
Dickinson Rotary Project Non-Endowment Fund***		3,025
Enchanted Hwy Foundation Project Non-Endowment Fund***		50
Enderlin Museum Endowment Fund		725
Gateway to Science Endowment Fund		34,573
Heart of America Germans from Russia Endowment Fund		4,650
Historic Elmwood Endowment Fund		26
Humanities North Dakota Endowment Fund		10,883
Jeremiah Program Fargo Moorhead Scheel Barry Endowment		210,000
Linton Hospital Endowment Fund		5,100
Lord of Life Lutheran Church Endowment Fund		11,500
McKenzie County Right To Life Endowment***		30,000
Missouri Slope Areawide United Way Endowment Fund		10,000
North Dakota Teen Challenge Endowment Fund		5,000
Prairie Public TV Endowment Fund		6,186
Richardton Health Center Foundation Endowment Fund		800
Rural Leadership ND Alumni Foundation		1,703
Ruth Meiers Hospitality House Endowment Fund		895
Sacred Heart Benedictine Foundation Endowment Fund		100
United Way Dickinson Endowment		9,000
Vision West ND Endowment Fund		1,000
Washburn Volunteer Ambulance Service Endowment Fund		2,543
Women’s Care Clinic Endowment Fund (Bismarck)		5,000
Women’s Care Clinic Endowment Fund		5,000
Young Life North Dakota (Bismarck) Fund		5,000
<b>Total Gifts to Organization Funds</b>		<b>762,058</b>

**Restricted Funds**

Alice Baer Memorial Foundation	103
Argue Family Fund for the Hamilton Cemetery Assoc	5,000
Beaulieu Township Norwegian Lutheran Cemetery Endowment Fund	500
Bellevue Cemetery Association Endowment Fund	22,980
Bismarck Hebrew Congregation Endowment Fund	100
Brown Brothers Memorial Recognition Project Fund	8,211
Cav-Landic Trail Non-Endowment Fund	20,000
Connie Wold Wellness Foundation	19,500
Dakota Social Justice Fund	160
Dewayne & Mary Knoshaug Tioga Museum Non-Endowment Project Fund***	49,706
Donor Advised Funds	1,378,968
First Lutheran Church Endowment Fund	15,000
Fort Stevenson Foundation Endowment Fund	920
Fort Stevenson State Park Non-Endowment Building Fund	60,000
Friendship Park Dickinson Project Non-Endowment	6,345
Friendship Park: Dickinson Endowment Fund	10,350
Gary Bird Charitable Endowment Fund	6,500
Halling Cemetery Association Endowment Fund***	25,000
IOOF Cemetery of Cando Fund	35,106
Inspiring Minds Endowment Fund	350
Lynn D Ebert Charitable Fund	69,985
Mandaree Head Start Building Fund	50,000
Mary G Wiltse Memorial Endowment Fund	115
Morton Mandan Public Library Building Fund	1,500,000
ND Conservation Non-Endowment Fund	1,000
North Dakota COVID-19 Community & Nonprofit Response Fund	343,231
Parkinson Wellness Programming Fund	300
Pleasant Hill Cemetery Endowment Fund	1,100
Powers Lake Fire Project Non-Endowment Project Fund	1,000
Remainder Annuity	222,854
Sacred Heart of Jesus Shrine on the Prairie Endowment Fund	5,000
Saddle Club Arena Complex Killdeer Fund	15,150
Shawn Flaherty Memorial Fund***	24,225
Sheyenne River Speedway Matching Fund***	40,000

St Patrick's Catholic Cemetery Endowment Fund	\$ 100
St Patrick's Legacy Endowment Fund	10,000
West River Veterinary Clinic Legacy Foundation	10,000
<b>Total Gifts to Funds With Donor Restrictions</b>	<b>3,958,859</b>

**Operating Endowment Funds**

Cynthia Timmins Maule Memorial Fund	25
Dr Richard H & Mischelle Timmins Fund	25
Kevin J Dvorak Fund	5,000
<b>Total Gifts to Operating Endowment Funds</b>	<b>5,050</b>

**Non-Endowment Funds**

31:8 Project	35,000
Central Dakota Cyclists Fund	2,400
Devils Lake Curling Club***	12,500
Friends of the Rail Bridge Fund	4,886
Harmon Lake Recreation Area Fund	5,000
Heart of America Germans from Russia Heritage Project	29,130
Heritage Art Tunnel Project Fiscal Sponsorship***	10,000
Killdeer Ambulance Service Fund	1,000
Lewis & Clark Trail Museum	350
North Dakota Music Hall of Fame	200
North Dakota Suicide Prevention Coalition	6,450
North Dakota Woman Suffrage Centennial Committee	1,400
OneOK Hospitality Employee COVID-19 Assistance Fund***	200,000
Operating Fund	50,203
Powers Lake Ambulance Non-Endowment Project Fund	1,000
Powers Lake Restoration Fund	309
Robinson Hall Restoration Project	13,389
Save Our Strand Fund	30
Southern Valley Economic Development Authority***	5,000
Stark County Sheriff's Association of Deputies Special Project Fund	26,500
Wishek Pool Renovation Project	50
<b>Total Gifts to Other Non-Endowment Funds</b>	<b>404,797</b>

**Less: Internal Grants** (1,156,510)

**Total Gifts to All Funds 2020** **\$ 7,304,747**

## The North Dakota Community Foundation Schedule of Grants Paid

Year Ended December 31, 2020

**NDCF Statewide Greatest Needs & Field Of Interest**

North Dakota COVID-19 Community & Nonprofit Response Fund, Children & Family Service Funds, ND Women's Foundation Don & Sylvia Schmid Fund, Harry & Merle Stephenson Fund, Nash Foundation Fund, Henry & Selma Lundene Endowment Fund

Abuse Resource Network	\$ 2,500
Abused Adult Resource Center - Impact From Closing Thrift Store	5,000
Aid, Inc	2,500
Amidon Community Cupboard	3,500
Association to Meet Emergency Needs, Inc	3,000
Ave Maria Village	5,000
Best Friends Mentoring Program - Mentoring At-Risk Youth SW ND	2,000
Beulah Care Center dba Knife River Care Center - Safeguard and Preservation	2,500
Bridging the Dental Gap - Emergency Dental Care	7,500
Burleigh County Council on Aging	6,000
CHI Health at Home - Home Health & Hospice	5,000
Community Action Partnership	4,000
Community Violence Intervention Center	2,500
Dakota Boys & Girls Ranch	5,000
Dakota Children's Advocacy Center	3,500
Domestic Violence Crisis Center	5,000
Emergency Food Pantry	6,000
Energy Capital Cooperative Child Care	2,500
Family Crisis Shelter	5,000
Garrison Area Resource Center & Food Pantry	1,500
Grand Forks Senior Center	3,000
Grand Forks Senior Center	4,000
Great Plains Food Bank	10,558
Happy Trails Child Care	3,500
Hatton Helping Hand Food Pantry	2,000
Heaven's Helpers Soup Café	6,000
Hettinger Public School District - Feed the Kids at a Distance	5,000
Home on the Range - Infectious Prevention and Control Equipment/PPE	3,000
Hope Center Devils Lake	5,500
Hope Manor Foundation	2,000
Jamestown Regional Medical Center Foundation	5,000
Jeremiah Program (Fargo Moorhead)	2,000
Kiddie Korner Preschool & Daycare, Inc	4,000
Larimore Public School - Distance Learning Food Service	3,000
Linton Hospital and Clinic	5,000
Little Lambs Childcare Inc	3,250
McKenzie County Public School District #1 - Student Internet Hotspots	3,588
Ministry on the Margins - Emergency Housing	3,000
Minot Commission on Aging, Inc - Meals on Wheels	6,000
Missouri Slope Areawide United Way	5,000
Missouri Slope Lutheran Care Center Foundation	5,000
Missouri Valley Family YMCA	2,500
Mountain Plains Youth Services - Youthworks	2,138
Nelson County Health Services Foundation	3,000
Nexus Family Healing Foundation - Mental Health	5,000
North Dakota Autism Center, Inc	5,000
Northlands Rescue Mission	8,500
Pembina County Memorial Hospital Foundation	2,000
Radiant Little Lambs Daycare Center	2,500
Sacred Pipe Resource Center	2,500
Solutions Behavioral Healthcare Professionals	10,000
St Joseph's Social Care and Thrift Store - Food Pantry	4,000

**IRA Charitable Rollover**

- Avoid taxes on transfers
- Satisfy your RMD
- Provide crucial support to a ND community or nonprofit

Ask us how!

St Luke's Hospital	\$	5,500	
The Banquet		6,000	
TR 4 Heart and Soul		1,500	
Tri-County Senior Meals & Services		3,500	
United Way Dickinson		4,500	
Valley Senior Living Foundation		5,000	
Walhalla Community Hospital Association		2,000	
Welcome House, Inc		5,000	
Women's Action and Resource Center - Food Pantry		6,000	
YMCA Cass & Clay Counties - Emergency Child Care, Youth Meals, & Organizational Support		5,000	
YMCA Grand Forks		2,474	
YMCA of Cass and Clay Counties		5,000	
YWCA Minot		3,500	
Association to Meet Emergency Needs, Inc - ConocoPhillips Grant Recommendation		3,000	
Community Action Partnership - ConocoPhillips Grant Recommendation		2,000	
Killdeer Area Ambulance Service - ConocoPhillips Grant Recommendation		5,000	
St Joseph's Hospital & Health Center Foundation - ConocoPhillips Grant Recommendation		10,000	\$ 291,008

Henry & Selma Lundene Endowment Fund			
Lutheran Sunset Home		675	
Park River Bible Camp		672	
Dakota Boys And Girls Ranch Foundation		672	
Heartview Foundation		672	
Augsburg College		672	
Mountain Lutheran Church		448	3,813

**Total NDCF Statewide Greatest Needs & Field of Interest Funds 294,821**

All grants in this shaded area were COVID-19 Response Grants

**Local Community Foundation Funds**

Adams County Community Foundation			
Adams County Food Pantry - Emergency Supplies		594	594
Anamoose Area Community Foundation			
Anamoose Housing Corporation - Replacing Kitchen Cabinets In All Units		4,400	
Tri-County Senior Meals & Services - Anamoose Senior Nutrition Meal		1,500	
City of Anamoose - Main Street Flowers 2021		500	
Anamoose Public School - Water Fountain Replacement		2,300	
Anamoose Park Board - Concessions Stand Addition		500	9,200
Arthur - Clarence Johnson & Eunice Iwen Community Foundation for Arthur ND			
Northern Cass School District - STEAM Camp		2,000	
Hunter Volunteer Fire Department - Equipment Upgrade		8,500	
Northern Cass School District - Northern Cass Continuing Mental Health Initiative		11,000	
Hunter Ambulance Service - 4x4 Ambulance		40,000	
Joint Arthur & Hunter Park District (Northern Cass Pass) - Northern Cass Pass		15,000	
Arthur Fire Department - Truck and handheld radios		10,296	
City of Arthur - Arthur Beautification & Community Recreation		3,200	
Community of Care - General Operating Support		5,000	
City of Arthur - Arthur Community Hall Renovation		15,000	
Arthur Fire Department - SCBA masks with thermal imaging devices		7,600	
Northern Cass Dollars for Scholars - 2020 Dollars for Scholars Scholarships		5,000	
Job Development Authority of Arthur - COVID-19 Rent Reduction		2,700	
Job Development Authority of Arthur - Wainscoting in Mall		5,000	
BIO Girls - BIO Girls - Northern Cass, ND - 2021		5,000	
City of Arthur - Utility Dump Trailer		5,000	
Northern Cass Dollars for Scholars - 2021 Dollars for Scholars Scholarships		3,000	
City of Arthur - Annual Tree Lighting Event and Veteran's Day		5,000	
Arthur Cemetery Association - Marker & Beautification		1,000	
Rural Cass County Emergency Food Pantry - Northern Cass Backpack Programs		1,500	
Job Development Authority of Arthur - Continued support for the JDA term debt		31,000	
Job Development Authority of Arthur - Roof Repairs		14,390	
Job Development Authority of Arthur - New cooler		2,745	
Job Development Authority of Arthur - New digital sign for station		5,000	
Joint Arthur & Hunter Park District (Northern Cass Pass) - Northern Cass Pass		30,000	
Community of Care - General Operating Support		10,000	
Clarence Johnson/Eunice Iwen Scholarship Fund		10,000	253,931

Ashley Community Endowment Fund			
Ashley JDA - Ashley American Legion Hall	\$	2,000	
Ashley Country Club - Pumphouse upgrades		2,000	
Ashley Arts Council - Saving Our Heritage		1,000	
Ashley Medical Center - Lighting System Replacement		3,000	
Ashley JDA - Job Opportunities		3,500	
Ashley Public School - Technology Update		2,000	
Ashley Chamber of Commerce - Chamber funding projects		2,000	
McIntosh County Historical Society - MCHS Museum Roof		4,000	\$ 19,500
Bismarck/Mandan Community Foundation & Glenn & Helen Sorlie Memorial Fund			
Welcome House, Inc - COVID-19 Emergency Relief Funds		2,000	
Morton County Council on Aging - Nutrition Program for the Elderly		3,000	
Hope Manor Foundation INC - COVID-19 Relief for Food & Housing		2,000	
Burleigh County Council on Aging - Home Delivered Meals		3,000	
Ministry on the Margins - COVID-19 Emergency Housing		3,000	
The Banquet - Emergency Relief for Meals		3,000	
Aid, Inc - Emergency Needs for the Disadvantaged		2,072	
Sunne Lutheran Church - The Wilton Food Pantry		1,000	
High Plains Fair Housing - Tenant/Landlord Mediation and Fair Housing Assistance		2,000	
Heaven's Helpers Soup Cafe - Meals Supplies		10,000	
Dakota Children's Advocacy Center - Dakota Children's Advocacy Center		3,750	
TR 4 Heart and Soul - Ongoing needs of the horses during the COVID-19 crisis		3,120	
Mountain Plains Youth Services - Emergency Services at Youthworks during COVID-19 crisis		3,200	
Abused Adult Resource Center - Emergency funding due to the impact of closing the thrift store		10,000	
Missouri Slope Areawide United Way - Funding for food and shelter for the disadvantaged		20,000	
Aid, Inc - Emergency Needs for the Disadvantaged		2,471	73,612
Bowman/Slope Community Foundation			
Amidon Fire Protection District - EMR Equipment & Lighting		700	
Scranton Fire Protection District - SCBA unit Repairs and Improvements		4,000	
The Giving Tree - The Giving Tree		3,000	
Marmarth Ambulance Service - Repeater Batteries		700	
Brosz Engineering, Inc - Splash Pad at Rotary Park		3,500	11,900
Carrington Community Endowment Fund			
Carrington Park District - Baseball/Softball Diamond Expansion Project		5,000	
Caring - Ton Child Care Center, Inc - 2020 Class Room Update		5,000	
Foster County Historical Society - Revive the Museum		5,500	
Carrington Health Center - Emergency Response Safe Patient Movement		1,500	
BIO Girls - 2021 BIO Girls - Carrington - New Rockford, ND		1,000	
Carrington Youth Center - Bathroom		1,950	
Carrington City Library - Collection Development		1,950	21,900
Casselton Community Endowment Fund			
Rural Cass County Emergency Food Pantry - COVID-19 Supplies		4,000	
Community of Care - Support to their volunteer program		2,000	
Casselton Public Library - Slatwall end panels		2,500	
Central Cass Public Schools - Spreading Sunshine at Central Cass		1,500	
Central Cass Archery Club - Central Cass Archery Club		1,200	
Cottonwood Golf Course - Tee Box Renovation - Cottonwood		3,500	
Casselton Park District - Swimming Pool Bathhouse		3,000	
Casselton Park District - Fishing Dock Project - Tinta Tawa Park		3,000	
Casselton Park District - Casselton Community Flowers		3,000	
Absaraka Parks - Basketball Court		4,000	27,700
Cavalier Community Foundation			
Pembina County Memorial Hospital Foundation - COVID-19 Home Services		2,000	
Northeastern ND Heritage Association - Archive & Artifact Committee		500	
City of Cavalier - Baseball Field of Dreams		1,200	
Pembina County Memorial Hospital - FAST Ultrasound for detection of life threatening injuries		1,250	
Pembina County Imagination Library - Pembina County Imagination Library		750	
Faith In Action Health Coalition - Faith in Action Health Coalition		1,000	6,700
Cooperstown Community Foundation			
Cooperstown Community Activities Authority - WeeCare Playground Project		4,500	
Cooperstown Park Board - Cooperstown Parks and Pool		2,500	
Trinity Lutheran - Trinity Lutheran Church Vacation Bible School		900	
Zion Lutheran Church - Community Vacation Bible School		900	

Griggs County Community Youth Project - Security lighting and new door for entry on westside	\$ 2,500	
Cooper Theatre Inc - Operating expenses for the theatre	1,000	\$ 12,300
Dickinson Area Community Foundation		
United Way: Dickinson - COVID-19 Family Support	2,060	
House of Manna - winter clothing supplies & window decals for building location	1,000	
Connect Medical Clinic - Improvement and Expansion to Services 2020	3,000	
St John Lutheran Church ELCA - Dickinson Backpack Program	800	
Dickinson Youth Football League - Program Support	800	7,660
Drayton Area Community Foundation		
Drayton Park Board - Ball Diamond Improvement	990	
Ox Cart Trails Historical Society Inc - H G Johnson Memorial Hall Renovation Project	990	
Drayton Sugar Bowl Senior Citizens - Five New Windows	990	
Pembina County Meals & Transportation - Free Medical Rides for Drayton area residents	990	3,960
Ellendale Area Community Foundation, Bill & Leona Meyer Fund, Ellendale Healthcare Fund		
NDSU Extension Service - Dickey County - Archery Building Remodel	4,000	
Ellendale Area Arts Council - Summer Concerts in the Park	1,000	
Prince of Peace Care Center - Resident/Community Wellness Courtyard	3,000	
Ellendale Park Board - Park Board Soccer Program	2,000	
Ellendale Historical Society - Van Meter Schoolhouse Foundation and Move	2,000	
Kedish House - Safety Equipment	1,000	
Ellendale Area Arts Council - EAAC Kids Art	1,000	
Ellendale Police Department - Updated Armored Vests and Carriers	500	
OPERA, Inc - Phase 1 Renovation of the Historic Ellendale Opera House	1,000	
Ellendale Fire Protection District - Saw Kit	4,200	
Ellendale Community Ambulance - Auto Pulse CPR Device	1,000	
Dickey County Fair Board - Community bathroom update	3,000	
Ellendale Community Ambulance - Auto Pulse CPR Device	3,785	27,485
Emerado Community Endowment Fund		
Emerado Volunteer Fire & Rescue Department - Food Shelf/museum	664	
Operation Homefront, Inc - Holiday Meals for Military	200	864
Enderlin Area Community Endowment Fund		
Happy Trails Child Care - Purchase of residence	1,469	
Enderlin Rural Fire Protection District - PPE/Supply/Training Expenses	1,469	
Happy Trails Child Care - COVID-19 Payroll Relief	1,000	
Enderlin Rural Fire Protection - PPE/Supply/Training Expenses related to COVID-19 crisis	1,000	4,938
Fairmount Community Endowment Fund		
Fairmount Park Board - Purchase of a new lawn mower for park	1,600	
Fairmount Community Center - Sign on front of building	1,944	3,544
Finley Community Endowment Fund		
Finley Fire District 203 - Finley Fire District Sign	2,000	
Finley-Sharon Public Schools - Greenhouse	1,500	
Sharon Fire Department - Sharon 125th Celebration and All Class Reunion	2,000	
Finley-Sharon Public Schools - After-School Program	1,500	
Finley Park Board - Finley Pool Heaters	3,013	10,013
Galesburg Area Foundation		
Elm River Cemetery Association - Cemetery Maintenance	1,300	
Stordahl Lutheran Church Cemetery - Cemetery Maintenance	1,300	
Norman Lutheran Cemetery Association - Cemetery Storage Shed	1,300	3,900
Garrison Area Community Foundation		
Garrison Area Resource Center & Food Pantry - Emergency Needs due to COVID-19 Crisis	1,000	
Garrison Community Chest - 2020 Garrison Community Chest Fund Drive	1,600	
Little Lunches Backpack Program - Little Lunches Backpack Program	2,500	5,100
Glen Ullin Area Community Foundation & Ishmael & Rose Diede Charitable Fund for Glen Ullin		
Marian Manor Healthcare Center - Purchase of a Dyn - Ergo Scoot Chair	1,153	
Glen Ullin Park Board - Grandstand - 2020	1,153	
Glen Ullin Senior Citizens Club - replace roof gutters	1,153	
City of Glen Ullin - 2020 Security Upgrade	1,153	
Crossroads Golf Association - Outdoor Shelter	1,153	5,763
Golden Valley County Community Foundation		
Beach City Park Board - Hwy 10 Playground Upgrade	2,500	
Golva Fire Protection District - air quality masks	662	3,162



NDCF Development Director Kara Geiger and Director of Communications Christi Stonecipher model the must-have fashion accessory of 2020. "Put your money where your mouth is - NDCF!"



Grafton Community Foundation, Harry & Merle Stephenson Memorial Fund, Sig Jagielski Memorial Fund, Lynn D. Ebert Charitable Fund		
BIO Girls - Grafton ND	\$ 741	
Girl Scouts - Dakota Horizons	1,661	
Grafton Volunteer Fire Department - Grain Bin Extrication Training	2,500	
Grafton Parks & Recreation - 8th Street Ball Field restroom/concessions project	5,000	
Save Our Strand	35,000	\$ 44,902
Hankinson Community Endowment Fund		
Hankinson Public Library - Coding Club	500	
Hankinson Park District - Community Skating Rink	500	1,000
Hannaford Area Community Foundation		
Hannaford Community Corporation - Gym Wall Project	2,700	
Hospice of the Red River Valley - Hospice of the Red River Valley - Grief Support	200	
Griggs County Community Youth Project (More for Less Thrift Store) - New Roof	300	3,200
Harvey Area Community Foundation		
City of Harvey - Cent Park West	3,000	
St Aloisius Medical Center - Defibrillators for Emergency Department	1,061	
Harvey Youth Football HWC Stingers	800	
Harvey School District 38 Elementary Art Department - Arts Organization Updates	500	
Harvey Ambulance Service, Inc - Cardiac Monitor Replacement	3,000	8,361
Hatton Area Community Foundation		
Hatton Eielson Public School - New Gym Side Backboards	600	600
Hebron Community Foundation & Ishmael & Rose Diede Charitable Fund for Hebron		
Best Friends Mentoring Program/Western Wellness Foundation - Hebron School - Based Mentoring	750	
Hebron Fire Protection District - Quick Response Unit Replacement	4,115	
Brick City Activity Center - Improve audio system for overhead projector	900	5,765
Hillsboro Community Foundation		
Hillsboro Public School - Classroom Libraries and Enrichment	1,570	
Trail County Historical Society - Portico Restoration of the Plummer House Museum in Hillsboro	2,000	
Hillsboro Manor Housing Inc - Attic Insulation	4,490	8,060
Hope Area Community Foundation		
Hope Early Learning Center - Grounds Improvement	1,500	
Hope Early Learning Center - Educational & Supplies Storage	1,000	
Colgate Presbyterian Church - Community Park Project	1,000	
Hope Dollars for Scholars	500	
Hope Public School - NASP Tournament Supplies	650	
Steele County Historical Society - New Sidewalk	1,200	
Hope Volunteer Ambulance - LUCAS Battery Replacement	750	
Hope Park District - Clean up Park by Pool	1,000	
Hope Housing Development Authority - Replace vinyl flooring	1,000	
City of Hope - Hope Days Committee - 2020 Town Celebration	1,000	
Hope Cemetery - Gravel for Cemetery Road	800	
Hope Park District - Hope Golf Course - Benches at the holes tee off	1,000	
Jefferson-Steinke American Legion - Post 18 - Sons of the Legion - Legion Baseball Program	1,200	
Steele County Historical Society - Hope Cannon Fund - Gun Powder & Primers	759	
American Legion Auxiliary Unit 18 Hope - Kitchen Improvements	500	
Hope Park District - Hope Swimming Pool - Life guard stands & ladders	1,000	
Jefferson-Steinke American Legion - Post 18 - Purchase more tables	1,000	
Hope Library - Large Print Books	200	16,059

Jamestown Community Foundation			
Jamestown Gymnastics Club - Raise The Roof	\$ 4,530		
Jamestown Park & Recreation Foundation Inc - Meidinger Splash Park	5,000		
South Central Homeless Coalition - Laundry Love	<u>2,000</u>	\$ 11,530	
Kenmare Area Community Foundation			
Tolley Fire Department - E-Dispatch Service	3,035		
Society of St Stephens Food Pantry - Restocking shelves and freezer	1,000		
Kenmare City Fire Department - Thermal Imaging Camera	1,500		
Kenmare Food Pantry - Kenmare Summer Arts	<u>1,000</u>	6,535	
Killdeer Area Community Foundation			
Dunn County Historical Society - Sanitizer for Dunn County Museum	1,720	1,720	
Kindred Area Community Foundation			
Kindred Area Ambulance Service - Panasonic Toughbook Computers	1,390		
Kindred Area Arts Partnership - Artist in Residence in Kindred Schools	500		
Leonard First Responders - Medical supplies	1,215		
BIO Girls - Kindred ND	770		
Kindred Park Board - Community Cinema Comes to Kindred	950		
Friends of Kindred Public Library - Library Fireplace Replacement	<u>800</u>	5,625	
Larimore Community Endowment Fund, Charles D. McCanna Fund, Vernon & Lila Halvorson Endowment Fund			
Larimore Fire Protection District - Air Packs	5,500		
Bellevue Cemetery Association - Upkeep and maintenance	2,000		
Edna Ralston Public Library - Roof repair and general operating expenses	2,000		
Radiant Little Lambs Daycare Center - Building Update for Public Safety	3,412		
Radiant Little Lambs Daycare Center - COVID-19 Relief	2,000		
Larimore Public School - Distance Learning Food Service	2,000		
Larimore Senior Citizens Club - New Lighting	1,500		
Sox For Kids	2,000		
Larimore Football - Lein Field Locker Room Project	1,500		
Hospice of the Red River Valley - Grief Support	<u>1,500</u>	23,412	
Lisbon Community Endowment Fund, Dale L. Brown Memorial Fund for Lisbon, Russell F. Brown Memorial Fund for Lisbon			
Abuse Resource Network - Emergency Needs	10,320		
Abuse Resource Network - Supervision	2,025		
Brown Brothers Memorial Recognition Project Fund - Future Memorial Project	8,211		
CHI Health at Home - We Honor Veteran's Program/Volunteer Training/Bereavement Support	5,000		
CHI Lisbon Health - Expanding Pain Clinic	10,000		
CHI Lisbon Health - Lab Fridge	3,749		
City of Lisbon - Speakers on Main Street	5,000		
For the Dirt - Sheyenne Speedway Grandstands beautification	3,000		
Girl Scouts Dakota Horizon - City of Lisbon Dog Park	900		
Lisbon Bissell Golf Club - Clubhouse Roof Repair	10,381		
Lisbon Civic and Commerce - Lisbon Main Street Beautification and Historic Corner	1,200		
Lisbon Girl Scouts - Storage building	2,500		
Lisbon Gymnastics Program - Lisbon Gymnastics Program	2,700		
Lisbon Park District - Replacement doors/windows/picnic tables at the Sandager Park Pavilion	25,000		
Lisbon Park District - Swimming pool sandblasting project	10,000		
Lisbon Public School District #19 - Gearing Up for Kindergarten and 5th Grade	4,000		
Lisbon Public School District #19 - Indoor Recess	3,000		
Lisbon Public School District #19 - Lisbon Sports Complex - Sound System	4,000		
Lisbon Public School District #19 - School Based Mental Health Services through The Village	12,500		
Lisbon Public School District #19 - Shoebox Grant	1,525		
Lisbon Public School District #19 - Technology for All Students	21,659		
Lisbon Recreation Board - Field Groomer	2,000		
Lisbon Recreation Board - Refrigerator and Soccer Nets	1,500		
McLeod Historical Preservation Society - McLeod Historical Society Preservation Schoolhouse	1,500		
North Dakota Veterans Home - North Dakota Veterans Home Memorial Garden	5,000		
Oakwood Cemetery Association	10,000		
Ransom County Food Pantry - Thanksgiving and Christmas Holiday Meal Baskets	5,000		
Riding for Dreams EAAT - 2020 Riding For Dreams Program Support	3,800		
Sheyenne River Speedway Matching Fund	40,000		
South Valley Multi District Special Education Preschool - Supplies Lisbon South Valley Preschool	<u>1,450</u>	216,920	

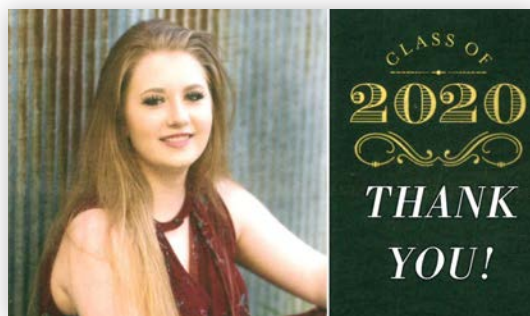
Maddock Community Foundation			
Maddock Opera House Association - USDA Loan Payment	\$ 1,967		
Maddock Community Historical Society - Roof maintenance on several museum complex buildings	1,967		
Maddock Public School - Technology Improvement Program	<u>5,000</u>	\$ 8,933	
McKenzie County Community Foundation			
McKenzie County Heritage Association - Children's Corner/Tater Tot's	500		
Badlands Gymnastics Club - Nodak Northern Lights Gymnastics Meet	400		
Bakken Oil Rush Ministry - Watford City - Winter Outer Wear Apparel for Watford City Children	2,000		
Long X Arts Foundation - Missoula Children's Theater	2,000		
BIO Girls - Watford City ND	1,500		
Rough Rider Center - Lifeguard Training Equipment	2,000		
McKenzie County 4-H Council	291		
McKenzie County Food Pantry - From ConocoPhillips	4,850		
First Lutheran Church - Free Community Thanksgiving Meal	<u>1,119</u>	14,660	
Milnor Community Foundation, Dale L. Brown Memorial Fund for Milnor, Russell F. Brown Memorial Fund for Milnor			
City of Milnor Park District - 2020 Summer Baseball Program	3,830		
City of Milnor Park District - Art in the Park	1,200		
City of Milnor Park District - Lawn Mower & Pool Heater	6,100		
City of Milnor - Benches, Waste Receptacles and Flower Pots	19,000		
City of Milnor - Main Street Sidewalks, Curb, Gutter and Lights	50,000		
Lakeview Golf Course Assoc - Bridge Safety Project Part 2 & Repairs/Updates	7,500		
Lakeview Golf Course Assoc - Building Exterior & Tree Farm	8,800		
Milnor Area Community Center - Heat Pumps and New Tarps Gym Floor	16,500		
Milnor Fire Department - Air lines	2,000		
Milnor Merchants Club - Main Street Flowers	1,650		
Milnor Recreation Board Milnor Park Board - Park Concession stand expansion	12,500		
Milnor Scholarship Association - 2020 Milnor High School Graduate/Alumni Scholarships	7,500		
Milnor School District - Playground upgrade	20,000		
Milnor School District - School Based Mental Health	7,500		
Youth Opportunity Unlimited, Inc - Children's Summer Theater Presents Tom Sawyer in 2020	2,750		
Youth Opportunity Unlimited, Inc - Mural on Main Street	5,125		
Youth Opportunity Unlimited, Inc - YOU Facility/Childcare Growth	<u>15,280</u>	187,235	
Minnewaukan Community Endowment Fund			
Minnewaukan Rural Fire Protection District - Extractor / Washer	5,600	5,600	
Minot Community Endowment Fund, Charles & Madge Westlie Endowment Fund, T.A. & Anna Solheim Endowment Fund			
Northern Plains Children's Advocacy Center - Tele - Forensic Interviewing	2,000		
Companions for Children, Inc - Lunch Pals: School - Based Youth Mentoring	2,000		
Companions for Children, Inc - Operating Funds	5,000		
Dakota Boys & Girls Ranch - IT Stability Distance Education & Tele - Health to Vulnerable Children	6,000		
Domestic Violence Crisis Center - COVID-19 Impact Relief	5,000		
Minot Area Chamber of Commerce - Junior Achievement	3,000		
Minot Area Homeless Coalition Inc - Direct services to the homeless	4,000		
Minot Commission on Aging, Inc - Meals on Wheels	5,000		
Minot Commission on Aging, Inc - Senior Nutrition Program	2,000		
Minot Social Club for Exceptional Persons - Sponsor of the Month/Reopening & Safety Awareness	2,000		
Operation Homefront, Inc - Holiday Meals for Military	2,500		
Prairie Grit Adaptive Sports - Operating Costs	6,300		
Souris Valley United Way - Souris Valley United Way Backpack Buddies	2,000		
The Difference - A Holistic Approach - Healing for Trauma Victims	2,000		
The Welcome Table - The Lord's Cupboard Food Pantry	2,500		
Trinity Health Foundation - Personal Protective Equipment	5,000		
YWCA Minot - COVID-19 Response Emergency Services	<u>10,000</u>	66,300	
Mohall Area Community Foundation			
Kenmare Wheels and Meals - Mohall Hot Meal Home Delivery	1,200		
City of Mohall - Splash Pad	<u>996</u>	2,196	
Mott-Regent Community Foundation & Ishmael & Rose Diede Charitable Fund for Mott/Regent			
Maercklein Conservation & Charitable Corp - Cannonball River Restoration Project Phase Two	2,286		
Mott Public Library - Go Large and Go Read	2,286		
New England Pubic School - New England Public School Playground Equipment	<u>1,300</u>	5,872	

New England Community Foundation & Ishmael & Rose Diede Charitable Fund for New England			Richland Wilkin Emergency Food Pantry - Computer for RW Emergency Food Pantry	\$	1,000	
New England Pubic School - New England Public School Playground Equipment	\$	5,600	Hankinson Public School - Chipper/shredder for American Legion Veterans Memorial Site		1,546	
New Rockford Community Foundation			Breckenridge United Methodist Church 'Soul Shop' - Speaker fees for fall event		1,500	
Community Ambulance Service of New Rockford - Emergency Overtime Payroll due to COVID-19	\$	3,000	Tiny Tigers & Tiger Cub Club Daycare - Rothsay Public School - Playground Sunshade		1,500	
Dakota Prairie Regional Center for the Arts - Actor Salaries for Summer Production		1,568	CAPLP - Lakes & Prairies Community Action - EBT Twin Town Gardener's Market		1,446	\$ 20,606
New Salem Area Community Foundation			Richland Wilkin Community Foundation Annual Campaign Fund			
New Salem Fire Department - Communications		26,871	Breckenridge Youth Program - Economic Resiliency Project for Breckenridge Youth Program (BYP)		2,500	
Oakes Area Community Foundation			Richland Wilkin Backpack Program - Computer for Mobile Pantry and Pantry		800	
Hospice of the Red River Valley - Grief Support		1,500	Richland - Wilkin Kinship - Kinship Technology Update		1,269	
Growing Small Towns - Main Street Building Renovation Project for Non-profit Startup		5,000	Southeastern North Dakota Community Action Agency - Emergency Assistance Richland County		7,500	
Bear Creek Roughriders - Install electricity and lights to the West side of the BCR arena		1,784	Three Rivers Crisis Center - Three Rivers Crisis Center		24,000	
Dickey County Master Gardeners - Healing Garden		1,500	Valley Lake Boys Home - Beds for Boys		1,500	
Tiny Tornadoes - Necessary Daycare Kitchen Updates		2,284	Someplace Safe - Financial Resources for Victims of Crime and Abuse Impacted by COVID-19		2,000	
SRCTC DECA - School Based Enterprise Equipment Purchase		750	FirstLink - Mental Health Trainings to those in Richland Wilkin Communities		1,500	
Oakes Golden Age Club - Paint Dining Room, Bathrooms & Vinyl Baseboards Oakes Senior Center		1,500	PARTNERS - Foot Care Program		1,500	
Tiny Tornadoes - Daycare Needs for Reopening		1,300	Richland Wilkin Backpack Program - Food for Kids		2,000	
Park River Community Endowment Fund & Chris Rostvet Memorial Fund			Richland Wilkin Program Costs		18,421	62,990
Kiddie Korner Preschool & Daycare, Inc - Help due to COVID-19		3,000	Rolla Community Endowment Fund			
Hillcrest Country Club, Inc - Cart Storage Preservation at Hillcrest		5,000	Revitalize Rolla - Rolla Family Entertainment Center		8,804	
Park River Area Public School - Alumni Room Projector Replacement		800	City of Rolla Forestry - Flowers for Main		800	
City of Lankin - Silver Dollar Community Center outside replacements/updates		4,750	Rolla Public Library - Bringing the Rolla Public Library into the 21st Century		1,121	10,725
American Legion Paul Farup Post #147 - American Legion Post #147 Monument Sign		5,000	Rugby Community Endowment Fund			
BIO Girls - BIO Girls - Park River, ND		500	Rugby Lions - 2020 Rugby Lions COVID-19 Disaster Response & Recovery Fund		10,000	
Kiddie Korner Preschool & Daycare, Inc - Sunshine Kids 2020 Improvements		1,500	Rugby's Dolly Parton's Imagination Library - Rugby's Dolly Parton's Imagination Library		1,000	
Park River Volunteer Fire Dept - Safety Equipment		1,400	Village Arts, Inc - Portable piano purchase		3,500	
Parshall Area Community Foundation			Tri-County Senior Meals & Services - Tri-County Senior Meals & Services - Nutrition Services		1,000	
Arthur Solie American Legion Post 121 - Update the Entryway of Legion and Finish the Rain Gutters		3,000	Pierce County Food Pantry - 2020 Christmas Food Baskets		1,500	
Van Hook Association - Van Hook Pickle Ball Court 2021		1,000	Little Flower School - Little Flower School SMART Board Upgrade & Picnic Tables		3,200	20,200
Parshall Public Library - Public Use Computers		1,000	Sherwood/Antler Community Foundation			
American Legion Auxiliary Unit 121 - Parshall Auxiliary Cares		1,000	Antler City & Rural Fire Dept - TV/DVD Upgrade		600	
Parshall High School - Proposal for Community Disc Golf Course and GAGA Ball Pit		3,040	Kenmare Wheels and Meals - Sherwood Senior Meal Program		227	827
Parshall Promoters - Parshall Main Street Banners		1,389	Stanley Area Community Foundation			
Pembina - Larry J. Wilwant Fund for Pembina ND			Prairie Rose Golf Course - Prairie Rose Golf Course Club House Project		18,606	
City of Pembina - Community Center Renovation Project 13 of 14		10,000	Stanley Community Public Schools - Stanley Elementary Playground		7,000	
Pembina Skating Rink - Safety and Maintenance		4,000	Mountrail County Medical Center - Chemotherapy and Infusion Treatment Room		10,300	
Pembina Cemetery Association - Cemetery upkeep		2,000	Stanley Area Cares for Kids		1,500	
City of Pembina - 4th of July Celebration		4,500	Stanley Parks & Recreation - Stanley Blue Jay Boosters		15,000	
Pembina Fire Department - Upgrade to LED lighting on Pumper truck		5,000	Stanley Parks & Recreation - Stanley Ray Rude Pool Renovation		5,000	
Pembina Ambulance Service Inc - Ambulance Chassis		5,000	Stanley Wrestling Club - Stanley Wrestling Club Youth Gear		3,575	60,981
Pembina Catfish Committee - Pembina Catfish Tournament		3,500	Strasburg Area Community Foundation			
City of Pembina - Greens Maintenance Program & Decking Replacement Project		3,700	Emmons County Ministerial Association - Emmons County Food Pantry		1,000	
Pembina Cemetery Association - Flags for the Cemetery		2,000	Strasburg Fire/Rescue Dept - Jaws Of Life Rescue Equipment		1,500	2,500
Faith In Action Health Coalition - Volunteer Travel Vouchers/Stipends		759	Tioga Community Foundation			
Pierce County Endowment Fund			Tioga Park Board - Picnic Tables		4,500	4,500
Geographical Center Historical Society - The Masterclasses of Prairie Village Museum		600	Walhalla Area Community Foundation			
Good Samaritan Hospital Association - Give Elevator One a Lift		500	Walhalla Swimming Pool Boiler		7,400	
Tri-County Senior Meals & Services - Nutritious Services for 60 and older Adults		2,200	Walhalla Park District - Walhalla City Park & Riverside Park Tree Removal		4,000	11,400
Tri-County Senior Meals & Services - Emergency Funds for Senior Meals		1,000	Westhope Area Community Foundation			
Richardton Area Community Foundation			Westhope Economic Development - Community Cares COVID-19 Support		2,600	2,600
Lt Theo R Zech American Legion Post #180 - American Legion Memorial repairs		2,000	Williston Area Community Foundation			
Richardton-Taylor School - National Speech and Debate Association Tournament		2,000	Summit Counseling Inc - COVID-19 Protection		701	701
Richardton Senior Citizens - Gas and Electrical		2,000	Wishek Area Community Foundation			
PAWS Richardton-Taylor Public School Playground		6,000	Wishek Public School - Wishek Baseball		568	568
Richardton Health Center, Inc - Richardton Health Center Server Installation		5,000	<b>Total Local Community Foundation Funds</b>			<b>1,497,046</b>
Richland Wilkin Community Foundation & Elmer & Lucille Hoffert Fund			<b>Scholarship Funds</b>			
Red Door Art Gallery & Museum - Online Art Auction		1,500	Alice Olson Byron Memorial Music Scholarship Fund			
Fairmount Park Board - Purchase of new lawn mower for the park		500	McKenna Jo Ohmann - Northland Com & Tech Coll		600	600
Hankinson Park District - Community Skating Rink		1,500	Allen Giese Scholarship Fund			
Marketplace of Ideas - Virtual Conversion of Marketplace for Kids Programming		2,000	ND FFA Foundation - Scholarships		2,000	2,000
City of Breckenridge - Breckenridge Dog Park		4,244	Arnold & Dorothy Holm Scholarship Fund			
BIO Girls - Wahpeton, Abercrombie & Wyndmere ND		3,120	Tayle Kaczmar - NDSU		360	
North Dakota State College of Science Foundation - Accessibility Initiative: Bremer Bank Theatre		750	Ashleigh Mary Voll - NDSU		360	720



Audrey Doyle Scholarship Fund			
Caitlyn K Vogel - Minot State University	\$	925	\$ 925
Benjamin Berg Memorial Scholarship Fund			
Cody Sorenson - Minnesota State University - Moorhead		500	
Cade Feeney - NDSU		500	
Connor Weikum - NDSU		500	
Skyler Riedinger - NDSU		<u>500</u>	2,000
Bert Rotnem Scholarship Fund			
Bailey Beneda - Northland Com & Tech Coll		2,000	
Dylan Rasmusson - Lake Region State College		1,800	
Marissa Jo Sluke - University of North Dakota		2,000	
Sydney Page Beneda - Lake Region State College		<u>2,000</u>	7,800
Billings County Scholarship Fund			
Abby Kessel - Mayville State University		363	
Afton Shypkoski - NDSU		<u>363</u>	725
Bismarck Rotary Club Scholarship Fund & Carole Bordenkircher Kralicek Scholarship Fund			
Dulce Benitez - BSC		2,500	
Gabrielle Belanger - Stanford University		2,500	
Annabelle Jundt - University of North Dakota		2,500	
Dylan Beck - University of North Texas		2,500	
Maren Schettler - University of North Dakota		2,500	
Rebekah Frohlich - Grand Canyon University Phoenix		<u>2,500</u>	15,000
Bismarck Schools Scholarship Fund			
Kjerste Lutz - NDSU		825	825
Bob Campbell Scholarship Fund			
Emily Plutowski - Minnesota State University - Moorhead		400	
Jacqueline Trevino - Mayville State University		<u>425</u>	825
Brian Meehl Memorial Scholarship Fund			
Cecelia Hoelscher - Valley City State University		250	
Brackin Awender - NDSU		<u>250</u>	500
Burton Louis Gewalt Meritorious Fund			
Emmaree Lauritsen - Bethel University		1,500	
Kayley Ceroll - NDSCS		1,500	
Vanessa Sunderland - NDSCS		1,500	
Jayden Wiertzema - NDSCS		1,500	
Kaitlin Arnhalt - NDSU		<u>1,500</u>	7,500
Carrington Health Scholarship Fund			
Carrington Health Center - Scholarships		1,175	1,175
Chris Traeholt Scholarship Fund			
Kane Wisnewski - NDSU		150	150
Conrad & Arthur Nisstad Memorial Scholarship Fund			
Mariah Topp - NDSU		1,178	
Cassidy Hoyt - Valley City State University		1,178	
Brenna Anderson - Trinity Bible College		1,178	
Jacob Johnson - Lynne's Welding Training, Inc		1,178	
Alexis Rushlow - NDSU		1,178	
Mitchell Eikorn - Lake Region State College		1,178	
Breck Ehlers - Lake Region State College		1,178	
Kennedy Gjovik - Lake Region State College		1,178	
Jory Boote - DSU		<u>1,178</u>	10,598

Curtis Stern Memorial Scholarship Fund			
Ruchika Kashyap - South Dakota State University	\$	5,000	\$ 5,000
Dawn Marie Stoik Memorial Athletic Scholarship Fund			
Trinity Larsen - BSC		250	250
Donald and Irene Metzen Scholarship Fund			
Bryar Erickson		1,000	1,000
Donald B. Sass Scholarship Fund			
Hunter Hendrickson - University of North Dakota		950	950
Donna Maston Charitable Scholarship Fund			
Anna Dragseth - NDSU		500	
Tayle Kaczmar - NDSU		1,000	
Ashleigh Mary Voll - NDSU		<u>1,000</u>	2,500
Dr. Donald P. Miller Memorial Scholarship Fund			
Jordan Alan Huizenga - University of Mary		1,025	1,025
Dr. Henry Springer Scholarship Fund			
Phoebe Diem - NDSU		1,400	
Kyle Schmidt - Minnesota State University - Moorhead		1,040	
Dawson Dassinger - DSU		1,040	
Abigail Smith - BSC		1,040	
Isabel Steckler - DSU		900	
Acacia Lancaster - DSU		1,040	
Macy Leiss - Black Hills State University		1,040	
Adelyn Emter - University of North Dakota		1,400	
Cheydan Hauf - University of North Dakota		1,400	
Aiden Jung - University of Montana		1,040	
Zackary Meuchel - DSU		1,040	
Ali Lafond - DSU		1,040	
Morgan Ehliis - University of Mary		1,400	
Amanda Brusseau - University of Mary		1,400	
Audrey Rodakowski - U of Jamestown		1,040	
Mya Decker - NDSU		1,400	
Austin Raatz - U of MN - Duluth		1,040	
Braxtyn Braun - DSU		1,040	
Brock Weidner - University of South Dakota		1,040	
Caileigh O'Dwyer - DSU		900	
Kysten Kubas - NDSU		1,400	
Sophia Jilek - BSC		900	
Ethan Kudma - BSC		400	
Eve Heupel - University of Mary		1,400	
Hailey Enney - DSU		1,040	
Jacob Shilman - Minnesota State University - Moorhead		1,040	
Jasmine Kostelecky - NDSU		1,040	
Jaxon Erie - University of North Dakota		1,400	
Madolyn Frank - DSU		400	
Nathaniel Marsh - University of Mary		1,400	
Taia Klaman - Concordia College - Moorhead		1,400	
Tallon Klatt - U of Jamestown		1,040	
Taylor Nelson - University of Mary		1,040	
Whitney Tiegs - University of North Dakota		1,040	
Maizie Richard - BSC		1,040	
Seth Herner - NDSU		1,400	
Skye Henderson - DSU		1,040	
Alexander Praus - DSU		1,040	
Brinklyn Schumacher - University of North Dakota		900	
Bryant Merry - NDSU		900	
Christopher Schneider - BSC		400	
Colin Decker - BSC		1,400	
Madison Semerad - DSU		1,040	
Lexi Buresh - Black Hills State University		1,040	
Erik Schwindt - NDSU		900	
Joseph Cody Hirschfeld IV - University of Mary		1,400	
Korie Riely - University of Mary		1,040	
Samantha Wilhelm - DSU		<u>1,040</u>	52,200

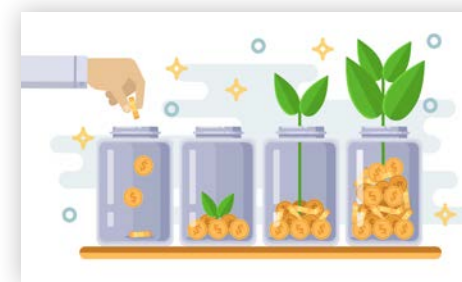


**Wow!** NDCF awarded 350 scholarships in 2020, totaling \$589,497. Congratulations to all these North Dakota students and best wishes as you further your education. Thank you to the many donors who established or contributed to scholarship funds at NDCF - your gifts continue to make a difference in the world!

Dr. Roger E. Meisner Veterinary Medicine Educational Fund			Larimore Public School - Scholarships	\$	8,000	\$	8,000
Janna Erickson - University of Minnesota College of Vet Medicine	\$	1,500	Helen & Ed Leiby Scholarship Fund in Science & Mathematics				
Taylor Storhoff - Kansas State University		1,500	Isaiah Reis - U of Jamestown		2,300		2,300
Sydni Schaper - Kansas State University		2,250	Helen & Everett Barta Scholarship Fund				
Leah Kienitz - Iowa State University		1,500	Skyler VanDorsten - University of Mary		1,575		1,575
Abigail Waloch - Tweeten - Kansas State University		2,250	Holli Kautzman Memorial Scholarship Fund				
Andrew Fugleberg - Colorado State Univer		2,250	Brooklyn Elizabeth Vollmer - NDSU		1,500		1,500
Blaire Schnabel - Colorado State Univer		5,250	Inspired Woman Scholarship Fund				
Emily Dorsey - Iowa State University		2,500	Anna Dragseth - NDSU		1,000		1,000
Jasmine Ridl - Kansas State University		2,250	Ishmael & Rose Diede Charitable Fund for Scholarships				
Kylee Nelson - Kansas State University		2,250	Alex Woronlecki - BSC		1,500		
Madison Ann Baumgartner - University of Minnesota College of Vet Medicine		2,250	Kristin Schaaf - NDSU		650		
Paige Schmidt - Kansas State University		2,500	Madee Eikamp - University of Mary		975		
Reanne Erickson - Washington State University		2,500	Molly Rayhorn - DSU		1,550		
Shelby Hanson - Colorado State Univer		2,250	Sydnee Anderson - BSC		975		
Talyssa Kvanvig - Iowa State University		2,250	Taizalee Glass - BSC		2,200		
Allison Wieler - Kansas State University		2,500	Breanna Hosman - NDSU		2,200		
Anne Brien - Kansas State University		2,500	Blake Rafferty - University of North Dakota		975		
Morgan Gentzkow - Oregon State University		2,500	Chase Remboldt - Valley City State University		650		
Sonja Gilje - University of Minnesota College of Vet Medicine		2,500	Emily Dinius - U of Jamestown		1,450		
Brooke St. Germain - Iowa State University		2,500	Emma Honeyman - NDSU		975		
Iveta Harner - Ross University School of Veterinary Medicine		5,625	Garret Soupir - BSC		650		
Mary Moen - Iowa State University		1,500	Holly Wolf - BSC		1,325		
Sydney Bork - Colorado State Univer		1,500	Maci Wehri - DSU		975		
Dylan Boyer - Iowa State University		<u>5,500</u>	Hadley Binstock - Black Hills State University		1,450		
Dushinske & Jamison Water Resources Scholarship Fund			Morgan Hertz - University of Mary		975		
Connor Jensen - NDSU		1,500	Mason Gerving - University of North Dakota		<u>650</u>		20,125
Matthew Reep - NDSU		1,500	J. Garvin Jacobson Scholarship Fund				
Sydnee Anderson - BSC		1,500	Eric Michael O'Konek - Williston State College		600		600
Rachel Goven - University of North Dakota		<u>1,500</u>	Jay Fagerholt Endowment Fund				
Edmore High Funding the Future Fund			Tyler Jackson - University of North Dakota		700		700
Ethan Sampson - NDSU		450	Jean A. Argue Scholarship Fund				
EllaRae Kelly Memorial Scholarship Fund			Emily Kennelly - Mayville State University		1,000		1,000
Ivy Daws - University of North Dakota		575	Jean E. Crabtree Memorial Scholarship Fund				
Ellendale Area Scholarship Fund			Macey Schlenker - Valley City State University		175		175
Isaiah Reis - U of Jamestown		1,000	Jeff Burgess Memorial Scholarship Fund				
Ian Wagner - NDSU		1,000	Nellie Masseth - NDSU		1,000		
Macey Schlenker - Valley City State University		<u>775</u>	Jayden Vollmuth - South Dakota School of Mines and Technology		<u>1,000</u>		2,000
Ellendale Farmers Union Scholarship Fund			Jim & Barbara Blaine Scholarship Fund				
Calli Hauck - NDSU		1,000	Kade Trottier - NDSU		925		925
Emil Nickl Scholarship Fund			JoAnn (Messer) Kopp Memorial Scholarship Fund				
Rebecca Van Hal - Minnesota State University - Moorhead		450	St Mary's Parish - Scholarships		1,250		1,250
Esther Hample Scholarship Fund			John & Yvonne Cronquist Midway Scholarship Fund				
Samantha Kay Smith - Mitchell Technical Institute		600	Avery Moen - Mayville State University		2,500		
Kylie Ann Stark - University of Mary		1,200	Rebecca Sauvageau - Mayville State University		<u>1,200</u>		3,700
Summer Czczok - University of Mary		1,200	John E. Conneran Memorial Scholarship				
Hope Butler - NDSU Nursing @ Sanford		<u>600</u>	Grand Forks Foundation for Education, Inc - Scholarships		3,000		3,000
First State Bank of ND Scholarship Fund			John Lunde Scholarship Fund				
Allison Jepson - University of North Dakota		320	Emily Kennelly - Mayville State University		75		75
Jaida Seyer - NDSU		320	Kenneth & Leila Morris Dental Scholarship Fund				
Shayla Novak - University of Mary		320	Hannah Brossart - University of Iowa College of Dentistry		1,000		
Nicole Schmitz - U of Jamestown		320	Maya Chuppe - Creighton University School of Dentistry		<u>2,350</u>		3,350
Megan Rodine - NDSU		<u>320</u>	Kirstin Skari Memorial Scholarship Fund				
Fred & Henrietta Kerian Memorial Scholarship Fund			Lauren Cain - University of North Dakota		725		725
Emily Plutowski - Minnesota State University - Moorhead		315	Kiwanis - Meier Scholarship Fund				
Jacqueline Trevino - Mayville State University		<u>325</u>	Kennedy Elizabeth Shereck - Arizona State University		150		150
Fred & Ida Osmon Scholarship Fund			Kyla Morehead Memorial Scholarship Fund				
Skyla Folden - NDSU		375	Ian Wagner - NDSU		150		150
Garry Opp Memorial Scholarship Fund			LaPlante Family Scholarship Fund				
Hunter Greenmyer - Valley City State University		750	Karlie Wardner - University of North Dakota		350		350
Gerald W. & Edith F. Wallace Scholarship Fund			Larimore Public Schools Scholarship Fund				
Nathan Zent - DSU		3,241	Larimore Public School - Scholarships		2,000		2,000
Grace Taylor Stone Scholarship Fund							

Lars & Hilda Svendsgaard Scholarship Fund				ND Veterinary Medical Association Scholarship Fund			
Colby Jones - Lake Region State College	\$	9,225	\$	9,225	Anne Brien - Kansas State University	\$	350
Leo Billey Memorial Scholarship Fund				Madison Ann Baumgartner - University of Minnesota College of Vet Medicine			350
Alex Nelson - NDSU		1,200		Peyton Bush - University of Minnesota College of Vet Medicine			150
Ian Wagner - NDSU		6,288		Sydney Bork - Colorado State Univer			<u>350</u>
Allison Jepson - University of North Dakota		1,200				\$	1,200
Calli Hauck - NDSU		6,288		ND Veterinary Medical Association Scholarship Non-Endowment Fund			
Cecelia Hoelscher - Valley City State University		1,200		Jasmine Ridl - Kansas State University			350
Jacob Bredeson - NDSCS		1,200		Sydni Schaper - Kansas State University			350
Jaida Seyer - NDSU		1,200		Allison Wieler - Kansas State University			350
Jozy Lee Kadoun - Valley City State University		1,200		Kylee Nelson - Kansas State University			350
Shayla Novak - University of Mary		1,200		Talyssa Kvanvig - Iowa State University			350
Megan Rodine - NDSU		1,200		Brooke St. Germain - Iowa State University			350
Claire Wagner - University of North Dakota		<u>1,200</u>		Shelby Hanson - Colorado State Univer			350
			23,375	Blaire Schnabel - Colorado State Univer			750
Les Melroe Gwinner Scholarship Fund				Andrew Fugleberg - Colorado State Univer			350
NaKayla Halmrast - NDSU		925		Peyton Bush - University of Minnesota College of Vet Medicine			200
Lewis Lilyquist Scholarship Fund				Mary Moen - Iowa State University			350
Isac Bentten		325		Dylan Boyer - Iowa State University			<u>750</u>
Lloyd & Martha Haas Scholarship Fund							4,850
Karina Diane Whaley - NDSU		1,500		Norman & Bill Erickson Uffda Scholarship Fund			
Lloyd A. Engh North Star Masonic Lodge Fund				Cody Yoder - BSC			1,000
Nichalas Michael - University of North Dakota		1,000					1,000
Margaret Geiger Green Scholarship Fund				North Dakota Nurse Practitioner Association Scholarship Fund			
Emma Johnson - University of North Dakota		325		Stephanie Hendricks - NDSU			1,000
Marv Rockstad Memorial Scholarship Fund				Ashley Benson - NDSU			1,000
Madison Miller - University of North Dakota		775		Cassie Thompson - University of North Dakota			<u>1,000</u>
Mary Goldader (Johnson) Memorial Scholarship Fund							3,000
Megan Rodine - NDSU		400		North Sargent Class of '63 Scholarship Fund			
Max Zelenak Scholarship Fund				Jessica Sherlock - The Salon Professional Academy			400
Brackin Awender - NDSU		1,200		Oakes VFW Scholarship Fund			
Kyle Thompson - University of North Dakota		<u>1,200</u>		Jacob Bredeson - NDSCS			700
			2,400				700
Michigan Scholarship Fund				Park River Scholarship Fund			
Brynn Kroke - Brown University		850		Karina Diane Whaley - NDSU			575
Marcus Gilbertson - University of North Dakota		<u>850</u>					575
			1,700	Paulie (Paula) Paul Memorial Scholarship Fund			
Monroe Scheflo Scholarship Fund				Kayla Boustead - NDSU			300
Andrew Muhs - Lake Region State College		1,000					300
Muriel R. Hyden Memorial Scholarship Fund				Personal Fortitude & Financial Peace Scholarship Fund			
Faith Wahl - University of North Dakota		650		Jasmine Race - BSC			1,200
ND Career & Technical Education Endowment Fund							1,200
Jarrel McGarvey - Lake Region State College		500		Raider Scholarship Fund			
ND Farmers Union Co-op House Scholarship Fund				Gabriella Messer - BSC			500
Bailey Hulm - NDSU		1,525					500
ChristiAnna Schmidt - NDSU		1,525		Ray & Hazel Wuolu Memorial Scholarship			
Koy Olson - NDSU		1,525		Claire Wagner - University of North Dakota			1,000
Taylor Garrett - NDSU		<u>1,525</u>					1,000
			6,100	Ray & Lillian Gulbranson Scholarship Fund			
ND Farmers Union Scholarship Fund				Lane Christopher Christensen - BSC			1,000
Ally Bauer - BSC		500					1,000
Brooke Aronson - NDSCS		500		Ray Scholarship Fund			
Camden Johnson - Trinity Bible College		500		Logan Ray - Spring Arbor University			675
Erika Neshem - University of North Dakota		500					<u>675</u>
Evan Halvorson - University of North Dakota		500					1,350
Kendra Kremer - NDSU		500		Richard & Christina Fiedler Scholarship Fund			
Paige Haakenson - South Dakota State University		500		Maci Wehri - DSU			225
Rhett Hanson - BSC		500					225
Sean Gierke - NDSU		500		Morgan Hertz - University of Mary			<u>225</u>
Thomas Odegaard - NDSU		<u>500</u>					450
			5,000	Rick & Nancy Warner Bigler Scholarship Fund			
ND Farmers Union-Alan Bergman Scholarship Fund				Alex Nelson - NDSU			325
Danika Knox - University of North Dakota		1,000					325
Kylee Bitz - Minnesota State Community & Technical College		1,000		Robert E. Chase Scholarship Fund			
Kourtney Bitz - Minnesota State University - Moorhead		<u>1,000</u>		Mandan Public Schools Foundation for Education - Scholarships			5,140
			3,000	Breanna Hosman - NDSU			265
ND Military Scholarship Fund							<u>265</u>
Rebecca Aubart - NDSU		375					5,670
			375	Ronald D. Liudahl Scholarship Fund			
				Noah Schaeffer - Valley City State University			1,025
							1,025
				Rugby High School Alumni Scholarship Fund			
				Alexandra Klein - Concordia College - Moorhead			300
							300
				Danielle Christianson - Lake Region State College			300
				Lillian Schmidt - MSU - Mankato			300
				Trace Goven - Lake Region State College			300
				Morgan LaRocque - Concordia College - Moorhead			<u>300</u>
							1,500
				Rupert J. Rehberg Scholarship Fund			
				Eric Michael O'Konek - Williston State College			4,000
							2,000
				Anna Dragseth - NDSU			

Jessen Timothy Homiston - NDSU	\$	4,000	
Gracie Johnsrud - Black Hills State University		4,000	
Jenna Mandler - U of MN - Crookston		4,000	
Jackson James Faller - Minnesota State University - Moorhead		4,000	
Sydney Faller - DSU		4,000	
Britnee Reagan Gullikson - Montana State University		4,000	
Abby Marie McCauley - NDSU		4,000	
Lily Noelle Olson - NDSU		4,000	
Olivia Gronos - University of Mary		4,000	
Gracie Ruth Dahl - University of Montana		4,000	
Ashleigh Mary Voll - NDSU		4,000	
Kason Kyle Hartel - NDSU		4,000	
Lindsay Sue Peterson - DSU		4,000	
Dillon Alexander Dyer - Minot State University		4,000	
Mikka Lynn Haugeberg - Minot State University		4,000	
Zanna Rae Lyon - University of North Dakota		4,000	
Grace Angelika Dragseth - NDSU		4,000	
Anna Dragseth - NDSU		4,000	
Brock Mitchael Haugeberg - NDSU		4,000	
Lakin Michelle Butler - Williston State College		4,000	
Sadie Pamela Kieson - Widener University		4,000	
Lydia Rose Berquist - University of North Dakota		4,000	
Jayden Ann Leiseth - NDSU		4,000	
Tayle Kaczmar - NDSU		4,000	
Jessen Timothy Homiston - Williston State College		4,000	
Sean Michael Larsen - University of North Dakota		4,000	
Mariah Ann Gullikson - BSC		4,000	
Gemma C Campbell - University of Mary		4,000	
Morgan Mackenzie Stebbins - Williston State College		4,000	
Sydney Ryan Sanford - NDSU		4,000	
Jade Lee Schlothauer - Montana Technological University		4,000	
Haleigh Hanhart - University of North Dakota		4,000	
Brittney Jo Foreman - Northland Com & Tech Coll		4,000	
Reese Owen Johnson - University of Arizona		4,000	
Luis Orlando Maria - Williston State College		4,000	
Cauy Justin Hartel - NDSU		4,000	
Braedon Gumke - U of Jamestown		4,000	
Jaycie Marie Rau - Black Hills State University		4,000	
Avery Joy Sundeen - Concordia College - Moorhead		4,000	
Mackenzie Elaine Sparby - U of Jamestown		4,000	
Hailey Elizabeth Carns - Williston State College		4,000	
Asher David Nueman Mitchell - Williston State College		4,000	
Kendra Dawn Foreman - University of North Dakota		4,000	
Carlton John Turnquist - NDSU		4,000	
Christopher Jerome Ferry - Williston State College		4,000	
Brooke Ann Mogen - NDSU		4,000	
Taylor Michelle Ewing - Utah State University		4,000	
Nevada Berquist - Casper College		4,000	
Kelly Danielson - University of Mary		4,000	
Carter John Zenz - University of North Dakota		4,000	
Carson Cayko - Minot State University		4,000	
Justin Dahl - Montana State University		4,000	
Ashley Killion - Oklahoma Wesleyan University		4,000	
Carter Silas Knutson - Williston State College		2,000	\$ 220,000
Sally Brash Memorial Scholarship Fund			
Sargent Central Public Schools - Scholarships	11,275		11,275
Sheila Coleman Memorial Scholarship Fund			
Cecelia Hoelscher - Valley City State University	750		750
Stanley & Julie Buxa Nursing Scholarship Fund			
Keringten Marie Lee - NDSU	350		350
The Theo Torgerson Scholarship Fund			
Marissa Jo Sluke - University of North Dakota	800		800



*A permanently-endowed fund generates charitable resources forever. If you want to provide real support to your community, school, or favorite charity, start an endowment fund for them! Contact NDCF for more information on how endowment works and how to set-up a fund (spoiler alert: it's easy) 😊*

Tiny & Joyce Gebhardt Scholarship Fund			
Calli Hauck - NDSU	\$	400	
Ian Wagner - NDSU		150	
Taylor Krege - Northern State University		200	\$ 750
Tom & Ruth Bettenhausen Scholarship Fund			
Blaire Schnabel - Colorado State Univer		683	
Iveta Harner - Ross University School of Veterinary Medicine		683	
Dylan Boyer - Iowa State University		683	2,049
Tom Sturdevant Scholarship Fund			
Cody Sorenson - Minnesota State University - Moorhead		200	200
Travis Allen Hohbein Memorial Scholarship Fund			
Hunter Heinle - University of North Dakota		500	500
Tyler Herman Memorial Scholarship Fund			
Bjorn Anders Saude - NDSU		175	175
U.S. Durum Growers Association Scholarship Fund			
Grace Angelika Dragseth - NDSU		1,000	1,000
UTTC Johnson Scholarship Foundation Endowment Fund			
United Tribes Technical College - Scholarships		9,000	9,000
Victor & Verna Johnson Scholarship Fund			
Taylor Rae Dalbey - NDSU		1,760	
Conner A Carriere - University of North Dakota		1,760	
Selena Hobbs - Mayville State University		1,760	5,280
Watford City High School Alumni Scholarship Fund			
Hallie Dawn Macklin - Williston State College		250	
Christopher Jerome Ferry - Williston State College		250	500
<b>Total Scholarship Funds</b>			<b>589,497</b>

**Organization Endowment Funds**

Abused Adult Resource Center Endowment Fund	1,395
Badlands Ministries Endowment Fund	4,616
Bethel Lutheran Church Endowment Fund	801
Bismarck Art & Galleries Association Endowment Fund	474
Bismarck Prairie Public Television Fund	1,623
Bremer Banks Prairie Public Television Fund	2,541
Cooperstown Bible Camp Endowment Fund	4,759
Enderlin Museum Endowment Fund	1,321
Esmond Jubilee Endowment Fund	
Esmond Park Board	414
Gateway to Science Endowment Fund	3,561
Harvey Public Library Endowment Fund	2,936
HIT, Inc. Endowment Fund	867
Icelandic Park Fund	
ND Parks & Recreation Dept	457
Icelandic State Park Centennial Project Endowment Fund	
ND Parks & Recreation Dept	13,027
Icelandic State Park Heritage Building Endowment Fund	
ND Parks & Recreation Dept	3,770
Leach Library Fund	513
Lisbon Public Library Fund	586
Little Flower Fund - Little Flower School	1,058
Little Flower Fund II Fund	1,159

Lord of Life Lutheran Church Endowment Fund	\$	6,169	
Mandan Presbyterian Church Endowment Fund		1,002	
Martin's Lutheran Church Endowment Fund		8,101	
Missouri Slope Areawide United Way Endowment Fund		48,754	
Morton Mandan Public Library Endowment Fund		1,329	
ND Real Estate Educational Fund			
ND Association of Realtors - Legal Hotline 2020		4,000	
North Dakota FFA Foundation Endowment Fund		1,150	
Oberon 55 Club Endowment Fund			
City of Oberon		619	
Pembina County Historical Society Fund		3,693	
Pioneer Square Endowment Fund		1,095	
Prairie Learning Center Endowment Fund		886	
Prairie Public TV Endowment Fund		5,816	
Red Willow Ministries Endowment Fund		2,500	
Sacred Heart Benedictine Foundation Endowment Fund		2,168	
Skuli Pall Benedictson Endowment Fund			
ND Parks & Recreation Dept		3,753	
Souris Valley United Way-Molly Wallin Endowment Fund		16,000	
The Bismarck Library Foundation, Inc. Endowment Fund		3,473	
Vision West ND Endowment Fund			
Adams County Development Corporation - Middle - Skills Training in Adams County	\$	1,200	
Hazen Chamber of Commerce - Make your Goal - BE LOCAL!		1,000	
West River Business Center - Create awareness of the reestablishment of a five county SBDC presence		1,300	
Dunn County - Dunn County CredibleMind		1,500	5,000
Women's Care Clinic Endowment Fund			2,935
Women's Care Clinic Endowment Fund (Bismarck)			1,784
<b>Total Organization Funds</b>			<b>166,105</b>

**School Funds**

Alexander Public School Foundation Fund			
Alexander Public School - Education Support		4,594	
Williston State College - Scholarship - Laiken Sundheim		500	
Williston State College - Scholarship - Asher Mitchell		500	
Williston State College - Scholarship - Payden LaRoque		250	
Williston State College - Scholarship - Eric O'Konek		250	6,094
Grenora Public School Foundation Fund			
Grenora Public School - automatic desktop folder			327
Lidgerwood Public School Foundation			
Lidgerwood Public School			2,769
McKenzie County Public School Dist #1 Foundation			
Food Service		12,000	
Workplace Ready Program Development Services		6,000	
Shot Put Ring		2,212	
WCHS Choir Piano Humidity Control System		437	
High School Library Grant		243	
Virtual Reality Equipment & License		3,176	24,066
McKenzie County Public School Foundation District #1 DARE Project Fund			
McKenzie County Public School District #1 - Creative Product Sourcing			2,182
Northern Cass Education Foundation			
Northern Cass School District			3,055
Will Athletic Complex Renovation			
Stanley Community Public Schools			217,784
<b>Total School Funds</b>			<b>256,277</b>

**Restricted Funds**

31:8 Project - Program Support			24,250
Adolph E. Shirley Memorial Endowment Fund			
Concordia College - Moorhead		1,002	
Anne Carlsen Center		1,002	
Salvation Army		2,004	
St Aloisius Medical Center		1,002	

Vang Church & Cemetery Care Fund	\$	1,002	\$	6,012
Alphonse & Loretta Hiltner Endowment Fund				
St Alphonsus Catholic Church		1,444		
St Alphonsus School Foundation		1,444		2,887
Art & Esther Emerson Endowment Fund				
Chaseley Methodist Church				6,829
Arthur Moore Fund				
Dallas Theological Seminary		3,292		
Fuller Theological Seminary		3,292		
Liberty University		3,292		
Back to the Bible		3,292		13,169
Bellevue Cemetery Association Endowment Fund - Program Support				2,049
Brinsmade Lutheran Church Cemetery Fund - Program Support				611
Clarence & Ardeen Sveum Exhibit Fund				
Bonanzaville, USA				35,797
Connie Wold Wellness Foundation				
University of Mary			500	
Oklahoma Wesleyan University			500	
Minot State University			500	
University of North Dakota			500	
NDSU			1,000	
Concordia College - Moorhead			500	3,500
Devils Lake Curling Club - Program Support				950
Dewayne & Mary Knoshaug Tioga Museum Non-Endowment Project Fund				
Tioga Historical Society				48,215
Donald J. Rupp Endowment Fund				
Zion Lutheran Church Cemetery			110	
Salem Mennonite Cemetery			110	
Rugby High School			445	
Munich High School			445	
Geographical Center Historical Society			555	
St Paul Lutheran Church			1,099	2,764
Donor Advised Funds & Operating Endowments				
Various Recipients				4,892,310
Dorothy D. James - Camp Grassick Fund - Program Support				225
Elmer & Lucille Hoffert Medical Research Fund				
UND Foundation - Cancer Research			760	
UND Foundation - Heart Disease Research			760	1,520
First Lutheran Church Endowment Fund - Program Support				
First Lutheran Church (Bismarck)				606
Fort Stevenson Foundation Endowment Fund				
Better Living for Garrison				7,297
Fort Stevenson State Park Non-Endowment Building Fund				
Guardhouse Improvements				20,000
Francis Fitzsimonds Endowment Fund				
St Joseph Catholic Cemetery Association			483	
Walhalla Hillside Cemetery Association			736	
Walhalla Catholic Cemetery Association			736	
Park Center Cemetery Association			242	2,196
Fred & Ida Osmon Endowment Fund - Ryder/Garrison				
Garrison Lamplighter Senior Club			347	
Ryder Happy Hour Senior Citizens			347	694
Gardar Cemetery Endowment Fund - Program Support				3,095
Garnett House Fund				
St Thomas Preservation Society				446
Genevieve Tamerius Fund				
St Leo's Catholic Church				186
Goshen - Moravian Cemetery Fund - Program Support				449
Grassy Butte Quick Response Project Fund				
Grassy Butte Fire Protection - Purchase of Sked Basic Rescue System				650
Harold & Eva Williams Memorial Fund				
Wing Rural Ambulance				491

The ONEOK Hospitality Employee COVID-19 Assistance Fund at NDCF has disbursed \$200,000 to 400 employees of the hospitality industry working in communities in western North Dakota or Sidney, Montana, and impacted by the COVID-19 pandemic. Each applicant received a grant for \$500 to assist with immediate needs for those who had been significantly impacted by the pandemic. Thank you, ONEOK, for partnering with NDCF during this crisis!



Harris P. Kenner Memorial Fund			
Maddock Rural Fire Protection District	\$	586	
Maddock Ambulance Service, Inc		586	
Leeds Rural Fire Protection District		586	
Leeds Ambulance Service		<u>586</u>	\$ 2,346
Heart of America Germans from Russia Heritage Project			
Geographical Center Historical Society - propane		376	
Geographical Center Historical Society - propane tank lease		47	
Envision Cooperative - Propane tank installation Prairie Village Museim		<u>229</u>	652
Historic Aadalen Church & Cemetery Fund - Program Support			341
James & Anne Ryan Memorial Fund			
Minot Catholic Schools - For Scholarships		1,642	
Catholic Charities ND - For Propagation of Faith		1,642	
Catholic Charities ND - For Celebration of Marriage		4,434	
Catholic Charities ND - For Pregnancy Services		7,061	
University of Mary - For Scholarships		<u>1,642</u>	16,421
Jim Hurkes Scholarship Fund			
Central Dakota Children's Choir - 2020 Scholarship Funds			575
John & Jean Rouzie Endowment Fund			
Anne Carlsen Center			1,648
John H. & Helene Mac Donald Endowment Fund			
St Joseph's Hospital Foundation		138	
Dakota Boys And Girls Ranch Foundation		207	
Domestic Violence & Rape Crisis Center - - Dickinson		207	
Evangelical Lutheran Church in America		207	
Salvation Army		207	
St John Lutheran Church ELCA		689	
ND Chapter - Nature Conservancy		<u>138</u>	1,792
Julius & Alta Burzloff Endowment Fund			
Burleigh County Council on Aging - Health Services Program		2,549	
Trinity Lutheran Church - Memorial Alter Flowers & Radio Broadcasts		<u>2,549</u>	5,098
Laurel & Betty Koehn Family Charitable Endowment Fund			
Cavalier County Emergency Food Pantry Inc		2,936	
Missouri Synod Lutheran		2,936	
Immanuel Redeemer Lutheran Church Cemetery Association		<u>1,455</u>	7,327
Lebanon Church Cemetery Fund - Program Support			535
Leon Dubourt Gorge Arts Council Endowment Fund			
Gorge Arts & Heritage Council			2,311
Lynn D. Ebert Charitable Fund			
Grafton High School		5,434	
Lutheran Sunset Home		5,434	
St John's Catholic Church		5,434	
Christian Unity Hospital Corp dba Unity Medical Center Corp		<u>5,434</u>	21,735
Mary Ann Pecka Memorial Fund			
St Mark's Catholic Cemetery Association			445
Mary E. Finley Endowment for Seniors of Walsh Cty. Fund			
Grafton Sunshine Senior Citizens Club			1,433
Mary G. Wiltse Memorial Endowment Fund			
Lisbon Public School District #19 - Scholarship			1,450
Maurice & Sharon Lardy Family Fund			

Home on the Range		\$	458
Meadows Memorial Fund			
Carrington Health Center			18,127
Mike & Dorothy Dolan Minot Commission on Aging Endowment Fund			
Minot Commission on Aging, Inc			1,667
Mike F. Dolan Minot Rotary Club Fund			
Minot Area Community Foundation - 2020 Rotary Scholarships			7,749
Minnewaukan Cemetery Fund - Program Support			162
Minnewaukan Evangelical Lutheran Cemetery Fund / St. Peter Cemetery Fund - Program Support			200
Mischelle C. Timmins Fund			
Prairie Learning Center			810
ND Conservation Non-Endowment Fund			
Ducks Unlimited			12,000
Nelson County Health Services Foundation Endowment Fund - Program Support			481
Nick & Anna Logosz Memorial Fund			
St John the Baptist Ukrainian Catholic Church			885
North Dakota Conservation Foundation			
North Dakota Grazing Lands Coalition			3,000
North Dakota Golf Foundation - Program Support			3,843
Northeast Regional Education Fund			
BIO Girls			759
Sacred Heart of Jesus Shrine on the Prairie Endowment Fund			
Sacred Heart of Jesus Catholic Church			190
Saddle Club Arena Complex: Killdeer Fund			
Killdeer Saddle Club Distribution Request			76,000
Sam Tolchinsky Endowment Fund			
The American Legion - State Oratorical Contest Scholarships			300
Save Our Strand Fund - Program Support			1,916
Singh Family Endowment Fund			
Salvation Army		\$	1,801
Mercer McLean Counties Commission on Aging			1,351
Hazen Area Dollars for Scholars			<u>1,351</u>
4,502			
Sons of Norway, Sverdrup Lodge #107 Endowment Fund			
Continuing scholarships to cultural skills classes			900
St. Patrick's Catholic Cemetery Endowment Fund			
St Patrick's Church			530
St. Peter's Centennial Fund			
St Peter's Lutheran Church			470
St. Thomas City Cemetery Endowment Fund - Program Support			822
Stark County Sheriff's Association of Deputies Special Project Fund - Program Support			636
Stony Lake Cemetery Fund - Program Support			680
Susanne Delaney Mattheis Charitable Fund			
University of Mary			6,587
Sanford Health Foundation			6,587
The Bismarck Public Library Foundation, Inc			6,587
Cathedral of the Holy Spirit			6,587
Bismarck/Mandan Symphony Orchestra			6,587
Bismarck State College Foundation			6,587
Bismarck Art & Galleries Association			<u>6,587</u>
46,106			
Valentine F. Brossart Memorial Fund			
Little Flower Church			547
Valley Grove Cemetery Endowment Fund			154
<b>Total Other Funds with Donor Restrictions</b>			<b>5,331,759</b>
<b>Grants Paid 2020</b>		<b>\$</b>	<b>8,135,505</b>
<b>Less: Internal Grants</b>			<b>(993,762)</b>
<b>Total Grants Paid 2020</b>		<b>\$</b>	<b>7,141,743</b>
<b>Charitable Project and Program Expenses Paid 2020</b>			<b>313,776</b>
<b>Total Charitable Grants and Expenditures in 2020</b>			<b>7,455,519</b>

# The North Dakota Community Foundation

## Schedule of Endowment Net Assets by the Type of Fund

Year Ended December 31, 2020

(\*\*\* Denotes New Fund)

**NDCF Statewide Greatest Needs & Field of Interest Fund**

Alphonse & Loretta Hiltner Fund	\$ 16,862
AMKO Charitable Endowment Fund ***	9,993
Arthur Moore Unrestricted Fund	641,429
Atwood-Larson Company Fund	8,052
B.C. Gamble Foundation Fund	31,108
Basin Electric Fund	2,937
Bush Foundation Fund	461,055
Carl & Dorothy Fischer Endowment Fund	1,888
CBP Fund	19,203
Charles Stewart Mott Foundation Fund	200,972
Child & Family Services Fund - William O. Haugen Estate	220,840
Clinton R. Ottmar Memorial Fund	13,803
Coalition for Impaired Health Professionals Fund	9,133
Dain Kalman Quail Fund	195
Dan & Mary Liberda Endowment Fund	1,854
Deluxe Check Printers Fund	23,173
Directors Fund	126,865
Don & Sylvia Schmid Fund	8,922
E. J. Lander Fund	195
Eagles #2614 - Devils Lake Fund	195
Eight Mile School District #6 Foundation Fund	128
Farmers St. Bank - Maddock Fund	489
Fern Christenson Unrestricted Endowment Fund	378,617
First National Bank - Grand Forks Fund	1,958
Frank O. Becker Endowment Fund	243,634
George & Diane Cox Unrestricted Fund	3,906
Gilbert Schmidt Unrestricted Fund	349
Grain Terminal Foundation Fund	11,179
Gulf Oil Corporation Fund	8,048
Harry & Merle Stephenson Fund	638,433
Henry & Selma Lundene Endowment Fund	148,648
Interstate Seed & Grain Fund	6,956
James C. Jensen Fund - Anonymous Fund #1	9,325
Joseph A. Anderson Unrestricted Fund	9,300
Joseph Imberman Fund	195
Joseph M. Powers Fund	783
Judge Harold M. & Harriet T. Hager Memorial Fund	22,540
Linda Steve Charitable Fund	2,004
Marie Almlie Music Unrestricted Fund	1,472
Mary J. Lamb Trust Fund	25,573
Montana Dakota Utilities Fund	52,237
Nash Foundation Fund	1,749
ND Bremer Banks Fund	200,972
ND Womens Foundation	115,712
Norman & Mattie Lou Weckerly Charitable Fund***	1,254,019
Otto Bremer Foundation Children & Family Services Fund	122,455
Otto Bremer Foundation Fund	202,769
Piper Jaffray Hopwood Fund	1,958
Porter Brothers Fund	3,916
Provident Life Insurance Company Fund	1,958
Singh Family Unrestricted Endowment Fund	119,648
Smith Investment Company Fund	10,005
Soo Line Railroad Fund	103,309

St. Paul Companies Fund	\$ 90,405
T.A. Solheim Fund	5,415
Technical Assistance Endowment Fund	1,481
The Constance A. Boler Memorial Fund	110,038
Torrey & Lillian Peterson Endowment Fund	1,888
Unrestricted Fund	88,644
Valerie Bren Memorial Fund	15,927
Valley Bank - Grand Forks Fund	2,937
Wayne J. & Magdalen R. Roberts Unrestricted Fund	548,318
<b>Total NDCF Statewide Greatest Needs &amp; Field of Interest Funds</b>	<b>6,367,970</b>

**Local Community Foundation Funds**

Adams County Community Foundation	64,389
Anamoose Area Community Foundation	283,691
Arthur - Clarence Johnson & Eunice Iwen Community Foundation for Arthur ND	7,117,698
Ashley Community Endowment Fund	\$ 582,819
William E. Kretschmar Charitable Fund for Ashley***	<u>1,074,491</u>
Bismarck/Mandan Community Foundation	2,009,749
Glenn & Helen Sorlie Memorial Fund	<u>71,317</u>
Bottineau Community Endowment Fund	69,356
Bowman/Slope Community Foundation	232,568
Carrington Community Endowment Fund	584,708
McGinn-Kunkel Estate Fund	<u>75,785</u>
Casselton Community Endowment Fund	628,221
Cavalier Community Foundation	219,623
Cooperstown Community Foundation	365,479
Dickinson Area Community Foundation	64,197
Drayton Area Community Foundation	135,787
Ellendale Area Community Foundation	864,441
Bill & Leona Meyer Fund	<u>32,154</u>
Emerado Community Endowment Fund	47,717
Enderlin Area Community Endowment Fund	150,910
Fairmount Community Endowment Fund	104,185
Finley Community Endowment Fund	287,746
Galesburg Area Foundation	121,872
Garrison Area Community Foundation	164,634
Glen Ullin Area Community Foundation	28,970
Ishmael & Rose Dieder Charitable Fund for Glen Ullin	<u>162,836</u>
Golden Valley County Community Foundation	111,353
Grafton Community Foundation	176,292
Harry & Merle Stephenson Memorial Fund	256,166
Sig Jagielski Memorial Fund	948,909
Lynn D. Ebert Charitable Fund	<u>9,014,443</u>
Hankinson Community Endowment Fund	10,395,811
Hannaford Area Community Foundation	43,675
Hannafor Area Community Foundation	90,999
Harvey Area Community Foundation	232,852
Hatton Area Community Foundation	94,746
Hazelton-Moffit-Braddock "Uncle T's" Community Foundation	43,153
Hebron Community Foundation	396
Ishmael & Rose Dieder Charitable Fund for Hebron	<u>162,829</u>
Hillsboro Community Foundation	163,225
Hope Area Community Foundation	240,773
Hunter - Judy Mae Hauff Memorial Fund***	491,864
Hurdsfield Community Endowment Fund	24,875
Jamestown Community Foundation	205,905
Kenmare Area Community Foundation	324,682
Killdeer Area Community Foundation	229,152
Kindred Area Community Foundation	107,944
Larimore Community Endowment Fund	170,813
Charles D. McCanna Fund	475,244
Vernon & Lila Halvorson Endowment Fund	197,550
Lisbon Community Endowment Fund	<u>8,386</u>
Dale L. Brown Memorial Fund for Lisbon	959,789
	2,601,473

Russell F. Brown Memorial Fund for Lisbon Maddock Community Foundation	\$ 2,700,096	\$ 6,261,357
McKenzie County Community Foundation		259,268
Mercer County Community Endowment Fund		328,984
Milnor Community Foundation	23,705	26,859
Dale L. Brown Memorial Fund for Milnor	2,603,107	
Russell F. Brown Memorial Fund for Milnor	<u>2,692,190</u>	5,319,002
Minnewaukan Community Endowment Fund		156,801
Minot Community Endowment Fund	879,695	
Charles & Madge Westlie Endowment Fund	468,113	
T.A. & Anna Solheim Endowment Fund	<u>519,913</u>	1,867,721
Mohall Area Community Foundation		74,072
Mott-Regent Community Foundation	705	
Ishmael & Rose Diede Charitable Fund for Mott/Regent	<u>163,298</u>	164,003
New England Community Foundation	5,327	
Ishmael & Rose Diede Charitable Fund for New England	<u>166,348</u>	171,674
New Rockford Community Foundation		143,193
New Salem Area Community Foundation		1,547,958
Oakes Area Community Foundation		658,749
Park River Community Endowment Fund	653,862	
Chris Rostvet Memorial Fund	<u>8,632</u>	662,494
Parshall Area Community Foundation		321,731
Pembina - Larry J. Wilwant Fund for Pembina ND		1,152,069
Pierce County Endowment Fund		122,279
Powers Lake Community Foundation		27,654
Richardton Area Community Foundation		502,076
Richland Wilkin Community Foundation	557,380	
Elmer & Lucille Hoffert Fund	<u>52,899</u>	610,279
Rolla Community Endowment Fund		355,046
Rugby Community Endowment Fund		590,202
Sherwood/Antler Community Foundation		34,345
Stanley Area Community Foundation		2,198,786
Strasburg Area Community Foundation		73,768
Tioga Community Foundation		133,801
Towner County Community Foundation		20,604
Walhalla Area Community Foundation		207,961
Westhope Area Community Foundation		76,994
Williston Area Community Foundation		24,575
Wishek Area Community Foundation		<u>32,699</u>
<b>Total Local Community Foundation Funds</b>		<b>53,325,348</b>

**Scholarship Funds**

Alfred Klewin Scholarship Fund		7,492
Alice Olson Byron Memorial Music Scholarship Fund		22,375
Allen Giese Scholarship Fund		86,144
Arnold & Dorothy Holm Scholarship Fund		23,333
Audrey Doyle Scholarship Fund		30,117
Barbara Beach Study Abroad Scholarship Fund		43,149
Benjamin Berg Memorial Scholarship Fund		73,500
Billings County Scholarship Fund		23,470
Bismarck Rotary Club Scholarship Fund	216,668	
Carole Bordenkircher Kralicek Scholarship Fund	<u>15,899</u>	232,567
Bismarck Schools Scholarship Fund	58,602	
Alton Carl Wolfer Memorial Scholarship Fund	6,045	
Chris Traeholt Scholarship Fund	5,502	
Edgar Bollinger Scholarship Fund	4,960	
Guy Larson Scholarship Fund	5,738	
Harold Kepler Music Scholarship Fund	11,209	
Jim & Barbara Blaine Scholarship Fund	29,000	
Kathy Eggmann Memorial Scholarship Fund	2,610	
Lisa Kraft Memorial Scholarship Fund	21,294	
Paulie (Paula) Paul Memorial Scholarship Fund	10,792	
Robert C. Peske Memorial Scholarship Fund	2,163	

Tom Sturdevant Scholarship Fund	\$ 7,135	\$ 165,050
Bob Campbell Scholarship Fund		13,784
Burton Louis Gewalt Meritorious Fund		302,749
Calvin Andrist Scholarship Fund		19,788
Carlyle R. & Eva M. Albrecht Scholarship Fund		11,933
Carrington Health Scholarship Fund		37,732
Clarence Johnson/Eunice Iwen Scholarship Fund		66,221
Cody Feist Memorial Scholarship Fund		12,148
Conrad & Arthur Nistad Memorial Scholarship Fund		336,069
Curtis Stern Memorial Scholarship Fund		173,760
Dean & Eleanor Miller Memorial Scholarship Fund		20,791
Dick & Dean Bultema Scholarship Fund		15,989
Donald and Irene Metzen Scholarship Fund		71,253
Donald B. Sass Scholarship Fund		36,661
Dr. Donald P. Miller Memorial Scholarship Fund		32,893
Dr. Henry Springer Scholarship Fund		1,533,539
Dr. Roger E. Meisner Veterinary Medicine Educational Fund		1,900,809
Dushinske & Jamison Water Resources Scholarship Fund		144,932
Einar & Helma Septon Scholarship Fund		20,582
Ellendale Area Scholarship Fund	91,721	
Helen & Ed Leiby Scholarship Fund in Science & Mathematics	89,706	
Kyla Morehead Memorial Scholarship Fund	5,478	
Tiny & Joyce Gebhardt Scholarship Fund	<u>25,385</u>	212,290
Elvine Sondreal Septon Fund		15,144
Emil Nickl Scholarship Fund		14,799
Esther Hample Scholarship Fund		43,560
Fay & Irene Sanders Memorial Scholarship Fund		17,450
Frank & Catharine Hornstein Memorial Music Scholarship Fund		6,809
Frank & Emilie Blasl Memorial Scholarship Fund		7,789
Frank & Joanne Bavendick Scholarships Fund		3,700
Fred & Henrietta Kerian Memorial Scholarship Fund		10,710
Fred & Ida Osmon Scholarship Fund		12,149
Gerald Ringdahl Memorial Scholarship***		26,488
Gerald W. & Edith F. Wallace Scholarship Fund		492,465
Grafton Scholarship Funds		
Bert Rotnem Scholarship Fund	222,823	
George H. Bliven Scholarship Fund	4,052	
Jay Fagerholt Endowment Fund	24,003	
Kiwanis - Meier Scholarship Fund	4,889	
LaPlante Family Scholarship Fund	11,200	
Noela Kingsbury Memorial Scholarship Fund	<u>5,786</u>	272,752
Helen & Everett Barta Scholarship Fund		51,824
Holli Kautzman Memorial Scholarship Fund		111,337
Ishmael & Rose Diede Charitable Fund for Scholarships		671,886
James & Winifred Marvin Scholarship Fund		119,049
Jean E. Crabtree Memorial Scholarship Fund		6,359
Jeff Burgess Memorial Scholarship Fund		35,258
J. Garvin Jacobson Scholarship Fund		19,596
Jim Lawler Memorial Scholarship Fund***		1,810
Joan Multhaup Scholarship Fund		12,874
John E. Conneran Memorial Scholarship		40,360
John J. Ayash Scholarship Fund		11,152
John & Yvonne Cronquist Midway Scholarship Fund		119,538
Kenneth & Arline Lueck Scholarship Fund		101,908
Kenneth & Leila Morris Dental Scholarship Fund		116,962
Kirstin Skari Memorial Scholarship Fund		24,705
Kyle Binstock Memorial Scholarship Fund		13,965
Larimore Public Schools Scholarship Fund	67,678	
Dawn Marie Stoik Memorial Athletic Scholarship Fund	6,822	
EllaRae Kelly Memorial Scholarship Fund	18,557	
Grace Taylor Stone Scholarship Fund	335,150	
Lloyd A. Engh North Star Masonic Lodge Fund	23,818	
Paul Daniel Hougen Memorial Athletic Scholarship Fund***	<u>5,297</u>	457,322



Lars & Hilda Svendsgaard Scholarship Fund		\$	260,250
Leo Billey Memorial Scholarship Fund			705,580
Les Melroe Gwinner Scholarship Fund			31,492
Lisbon Scholarship Funds			
Harold & Eldeane Johnson Scholarship Fund	\$	60,342	
Lewis Lilyquist Scholarship Fund		12,092	
Lisbon Dollars For Scholars Fund		<u>35,328</u>	107,762
Lynn Berg Memorial Scholarship Fund***			56,176
Margaret Geiger Green Scholarship Fund			10,345
Marv Rockstad Memorial Scholarship Fund			24,940
Mary Goldader (Johnson) Memorial Scholarship Fund			13,240
Michigan Scholarship Fund			87,272
Minot Kiwanis Scholarship Fund			22,645
Monroe Scheflo Scholarship Fund			31,311
Muriel Crabtree Music Scholarship Fund			23,335
Muriel R. Hyden Memorial Scholarship Fund			21,617
ND Aviation Association Scholarship Fund***			110
ND Career & Technical Education Endowment Fund			25,677
NDCF/ND Nurses Association Scholarship Fund			116,748
ND Farmers Union-Alan Bergman Scholarship Fund			159,516
ND Farmers Union Co-op House Scholarship Fund			174,712
ND Farmers Union Scholarship Fund			144,974
ND Military Scholarship Fund			12,418
ND Veterinary Medical Association Scholarship Fund			47,321
North Dakota Nurse Practitioner Association Scholarship Fund			60,652
North Sargent Class of '63 Scholarship Fund			13,550
Oakes Scholarship Funds			
First State Bank of ND Scholarship Fund		62,731	
Max Zelenak Scholarship Fund		78,208	
Oakes VFW Scholarship Fund		24,340	
Rick & Nancy Warner Bigler Scholarship Fund		<u>12,943</u>	178,222
Park River Scholarship Fund		18,461	
Lloyd & Martha Haas Scholarship Fund		74,322	
Victor & Verna Johnson Scholarship Fund		<u>149,057</u>	241,841
Ray & Lillian Gulbranson Scholarship Fund			33,341
Ray Scholarship Fund			44,787
Richard & Christina Fiedler Scholarship Fund			14,453
Robert E. Chase Scholarship Fund			186,799
Ronald D. Liudahl Scholarship Fund			34,025
Rugby High School Alumni Scholarship Fund			57,911
Rupert J. Rehberg Scholarship Fund			7,036,520
Sally Brash Memorial Scholarship Fund			320,987
Sheldon Mizpah Scholarship Fund			13,948
Stanley & Julie Buxa Nursing Scholarship Fund			11,340
St. Thomas Scholarship Funds			
St. Thomas Masonic Lodge #30 Scholarship Fund		15,892	
Jean A. Argue Scholarship Fund		31,712	
John Lunde Scholarship Fund		3,090	
Josephine Garnett Miller Scholarship Fund		21,621	
Thomas Whelan Scholarship Fund		4,073	
Victor & Louise Dusterhoft Scholarship Fund		2,183	
William Born Scholarship Fund		<u>17,359</u>	95,930
Sue Podenski Scholarship Fund			8,132
The Theo Torgerson Scholarship Fund			25,962
Timothy T. & Frances White Scholarship Fund			114,429
Tom & Ruth Bettenhausen Scholarship Fund			101,357
Travis Allen Hohbein Memorial Scholarship Fund			14,254
Tyler Herman Memorial Scholarship Fund			6,159
UTTC Johnson Scholarship Foundation Endowment Fund			<u>378,142</u>
<b>Total Scholarship Funds</b>			<b>19,581,028</b>

**School Funds**

Carrington Public School Fund	\$	12,344
Divide County Public School Foundation		14,700
Ellendale Public Schools Foundation Fund		162,497
Fessenden-Bowdon Public School Foundation		1,561
Kulm Public School Foundation Fund		97,021
Lidgerwood Public School Foundation		256,467
Lisbon Public Schools Endowment Fund		97,756
Northern Cass Education Foundation		87,994
Oakes Public School Endowment Fund		25,722
Oakes Public Schools Music Booster Fund		30,147
Our Redeemer School Endowment Fund		14,868
Park River Area Education Foundation - Endowment		47,522
Ray-Nesson Public School Endowment		643,292
Richardton-Taylor Public School Endowment		6,875
Stanley Community Schools Foundation		102,740
Underwood, ND School Foundation Endowment Fund		26,065
Wahpeton Alumni Foundation		5,174
Wyndmere School Foundation***		<u>11,751</u>
<b>Total School Funds</b>		<b>1,644,496</b>

**Organization Funds**

ABLE, Inc. Endowment Fund		63,303
Abused Adult Resource Center Endowment Fund		44,090
Alpha Opportunities Endowment Fund		6,230
Ashley Public Library Endowment Fund		5,430
Badlands Ministries Endowment Fund		176,222
Bethel Church Endowment Fund		59,377
Bethel Lutheran Church Endowment Fund		24,070
Bismarck Art & Galleries Association Endowment Fund		13,445
Casselton Parks & Recreation Endowment Fund		148,048
Catholic Charities North Dakota Endowment Fund		158,261
Cooperstown Bible Camp Endowment Fund		317,350
Dickinson Public Library Foundation Endowment***		353,483
Dickinson Rotary Charitable Endowment Fund		40,955
Enderlin Museum Endowment Fund		64,422
Entertainment, Inc. Fund		4,041
Esmond Jubilee Endowment Fund		11,551
Farm Rescue Foundation		98,182
Fellowship of Christian Athletes North Dakota Endowment Fund		20,847
First Care Health Center Endowment Fund		306,599
Gateway to Science Endowment Fund		193,702
Good Samaritan Health Service Fund		48,154
Harvey Public Library Endowment Fund		141,693
Heart of America Germans from Russia Endowment Fund		22,434
Herb Boswau Memorial Professional Development Grant Fund		13,389
Historic Elmwood Endowment Fund		17,095
HIT, Inc. Endowment Fund		24,955
Humanities North Dakota Endowment Fund		31,716
Icelandic State Park Funds		
Icelandic Park Fund	\$	12,893
Icelandic State Park Centennial Project Endowment Fund		368,337
Icelandic State Park Heritage Building Endowment Fund		106,608
Skuli Pall Benedictson Endowment Fund		<u>106,157</u>
Jeremiah Program Fargo Moorhead Scheel Barry Endowment		497,396
Kalloch Eunice Gronvold House Endowment Fund		33,901
Leach Library Fund		14,315
Linton Hospital Endowment Fund		64,496
Lisbon Public Library Fund		16,734
Little Flower Fund		29,556
Little Flower Fund II Fund		33,144
Lord of Life Lutheran Church Endowment Fund		234,082
Mandan Presbyterian Church Endowment Fund		33,399

Martin's Lutheran Church Endowment Fund		\$	275,032
McKenzie County Health System Endowment Fund			20,557
McKenzie County Right To Life Endowment***			30,552
Missouri Slope Areawide United Way Endowment Fund	\$	1,717,149	
Thomas B. & Anna Jane Regan Fund		1,476	
Marlowe Ann Regan Endowment Fund		<u>8,854</u>	1,727,479
Morton Mandan Public Library Endowment Fund			39,451
ND Center for the Book Fund			3,838
ND Real Estate Educational Fund			185,880
New Town Health Support Corporation Endowment Fund			24,027
North Dakota FFA Foundation Endowment Fund			33,202
North Dakota Teen Challenge Endowment Fund			116,217
Northwood Deaconess Health Center Endowment			13,490
Oberon "55" Club Endowment Fund			17,306
Pembina County Historial Society Fund		106,449	
Cavalier Jail / Library Building Endowment Fund		2,561	
St. Anthony's Church Endowment Fund		<u>41,525</u>	150,535
Pioneer School Endowment Fund			22,311
Pioneer Square Endowment Fund			32,867
Prairie Learning Center Endowment Fund			27,782
Prairie Public TV Endowment Fund		169,779	
Bismarck Prairie Public Television Fund		45,606	
Bremer Banks Prairie Public Television Fund		<u>71,471</u>	286,856
Preservation North Dakota Endowment Fund			6,180
Pride, Inc. Endowment Fund			180,174
Red Willow Ministries Endowment Fund			135,467
Richardton Health Center Foundation Endowment Fund			41,760
Rural Leadership ND Alumni Foundation			19,523
Ruth Meiers Hospitality House Endowment Fund			131,163
Sacred Heart Benedictine Foundation Endowment Fund			66,947
Sitting Bull College Endowment Fund		111,788	
Sitting Bull College Scholarship Fund		<u>3,286</u>	115,075
Souris Valley United Way-Molly Wallin Endowment Fund			468,062
The Bismarck Library Foundation, Inc. Endowment Fund			96,878
Turtle Mountain Environmental Learning Center Fund			6,108
United Tribes Technical College Endowment Fund			275,705
United Way Dickinson Endowment			28,972
Vision West ND Endowment Fund			242,471
Volunteer Caregivers for the Elderly Endowment Fund			6,897
Washburn Volunteer Ambulance Service Endowment Fund			69,898
Women's Care Clinic Endowment Fund			107,811
Women's Care Clinic Endowment Fund (Bismarck)			66,237
Young Life North Dakota (Bismarck) Fund			112,245
Young Life North Dakota (Native) Fund			<u>61,947</u>
<b>Total Organization Funds</b>			<b>9,206,963</b>

**Special Purpose Restricted Funds**

Adolph E. Shirley Memorial Endowment Fund			168,048
Alphonse & Loretta Hiltner Endowment Fund			81,536
Andvari Hallson Cemetery Association Endowment Fund			22,696
Antiochia Lutheran Cemetery Fund			21,728
Argue Family Fund for the Hamilton Cemetery Assoc.			76,331
Art & Esther Emerson Endowment Fund			190,354
Arthur Moore Fund			371,605
Beaulieu Township Norwegian Lutheran Cemetery Endowment Fund			16,811
Bellevue Cemetery Association Endowment Fund			116,610
Bismarck/Mandan Branch of AAUW Leadership Fund			12,819
Bismarck Schools BECEP Fund			12,525
Bismarck Schools Chemistry Fund			3,215
Brinsmade Lutheran Church Cemetery Fund			17,269
CCC Statue Endowment Fund			6,969
Center for Peace Studies Fund			181,542
Clarence & Ardeen Sveum Exhibit Fund			1,015,402

Dakota Children's Advocacy Center Endowment Fund	\$	30,477
Dakota Social Justice Fund		61,705
Deering Lutheran Church Cemetery Fund		14,917
Donald J. Rupp Endowment Fund		63,934
Dorothy D. James - Camp Grassick Fund		6,350
Ellendale Healthcare Fund		106,669
Elmer & Lucille Hoffert Medical Research Fund		42,238
First Lutheran Church Endowment Fund		79,888
Fort Stevenson Foundation Endowment Fund		206,282
Francis Fitzsimonds Endowment Fund		62,033
Fred & Ida Osmon Endowment Fund - Ryder/Garrison		20,141
Friendship Park: Dickinson Endowment Fund		17,394
Gardar Cemetery Endowment Fund		87,609
Garnett House Fund		12,743
Genevieve Tamerius Fund		5,255
Glasston Cemetery Association Endowment Fund		21,323
Goshen-Moravian Cemetery Fund		12,515
Greenwood Cemetery Association Endowment Fund		20,550
Gustavus Adolphus Cemetery Fund		48,829
Halling Cemetery Association Endowment Fund***		24,960
Hamilton Cemetery Fund		78,818
Harold & Eva Williams Memorial Fund		13,727
Harold & Susan Bergquist Endowment Fund		9,976
Harris P. Kenner Memorial Fund		65,488
Historic Aadalen Church & Cemetery Fund		9,891
Historic Aadalen Church Endowment Fund		8,139
Historic Jewish Cemetery - Regan, ND Endowment Fund		50,039
Inspiring Minds Endowment Fund		18,701
I.O.O.F. Cemetery of Cando Fund		87,480
James & Anne Ryan Memorial Fund		459,836
JB Martin Fund for Hamilton Township Cemetery Assoc.		10,495
Jim Hurkes Scholarship Fund		16,963
John B. Williams Fund		203,678
John D. Kelly Endowment Fund		57,049
John H. & Helene Mac Donald Endowment Fund		58,048
John & Jean Rouzie Endowment Fund		46,368
Julius & Alta Burzloff Endowment Fund		144,233
Laurel & Betty Koehn Family Charitable Endowment Fund		205,856
Lebanon Church Cemetery Fund		15,299
Leeds Lutheran Church Cemetery Fund		17,396
Leon Dubourt Gorge Arts Council Endowment Fund		66,860
Lisbon Jaycees Scholarship Fund		11,091
Lisbon Kiwanis Leadership Fund		21,450
Mandan Historical Society Endowment Fund		17,947
Mandaree Head Start Building Fund		94,126
Mary Ann Pecka Memorial Fund		12,529
Mary G. Wiltse Memorial Endowment Fund		48,488
Mary Louise Blizzard Memorial Fund		2,709
Maurice & Sharon Lardy Family Fund		12,752
Mayo Meadows Health Professional Recruitment Fund		4,833
McElroy Endowment Fund		43,270
McKenzie County Library Fund		16,960
Meadows Memorial Fund		529,336
Mike & Dorothy Dolan Minot Commission on Aging Endowment Fund		46,790
Mike F. Dolan Minot Rotary Club Fund		221,905
Minnewaukan Cemetery Fund		4,598
Minnewaukan Evangelical Lutheran Cemetery Fund / St. Peter Cemetery Fund		5,655
Mischelle C. Timmins Fund		24,116
Nelson County Health Services Foundation Endowment Fund		13,679
Nick & Anna Logosz Memorial Fund		25,163
Nordmanna Cemetery Endowment Fund		15,717
North Dakota Conservation Foundation		263,658
Northeast Regional Education Fund		21,249

Pleasant Hill Cemetery Endowment Fund	\$	66,498
Sacred Heart of Jesus Shrine on the Prairie Endowment Fund		22,783
Sam Tolchinsky Endowment Fund		12,919
Shawn Flaherty Memorial Fund***		27,326
Short Creek Church & Cemetery Fund		20,733
Singh Family Endowment Fund		126,861
Sons of Norway, Sverdrup Lodge #107 Endowment Fund		26,559
South Pembina Cemetery Fund		3,211
Stony Lake Cemetery Fund		18,956
St. Patrick's Catholic Cemetery Endowment Fund		15,210
St. Patrick's Legacy Endowment Fund		9,984
St. Peter's Centennial Fund		13,365
St. Thomas City Cemetery Endowment Fund		48,572
Stump Lake Park Endowment Fund		3,018
Susanne Delaney Mattheis Charitable Fund		1,283,627
United Methodist Church of Milnor Endowment Fund		31,535
Valentine F. Brossart Memorial Fund		15,250
Valley Grove Cemetery Endowment Fund		4,253
Vang Cemetery Fund		3,308
West River Veterinary Clinic Legacy Foundation		48,550
<b>Total Special Purpose Restricted Funds</b>		<b>8,166,149</b>

**Donor Advised Endowment Funds**

Aaron & Kristal Schmit Charitable Fund		29,735
Bradley & Julie Burgum Family Fund		182,795
Brooks F. Burgum Donor-Advised Fund		316,714
Bryan & Cynthia Dvirnak Endowment Fund		12,260
Cofell Heritage Fund		296,290
Craig B. & Kathryn J. Oksol Family Charitable Fund		31,857
Dahl-Beres Charitable Fund		24,264
Dirty Rock Endowment Fund		47,605
Donna Maston Charitable Fund		232,828
Evan's Support Endowment		2,176
Frank & Joanne Bavendick Family Fund		11,386
George & Helen Christensen Family Charitable Fund		76,223
George & Linda Linz Charitable Fund		12,134
Hankey Family Charitable Fund		159,542
Hugh B. Cowan Charitable Fund		35,987
I. A. Hendrickson Family Heritage Fund		68,584
Jim & Cyndy Robinson Family Charitable Fund		41,164
John & Anna Mae Hankey Charitable Fund		47,457
John C. Chatelain & Catherine S. Jenson-Chatelain Charitable Fund		75,101
Kaitlin (Schindler) Prins Memorial Endowment Fund		15,314
Kaye Jessen Endowment Fund		41,959
Kirchmeier Family Charitable Fund		36,857
Little Buddy Foundation		34,302
Lynn & Carla Schaible Charitable Fund		268,151
Meyer Family Charitable Fund		451,789
Michael and Kari Goos Family Fund		19,287
Michael & Pamela Uran Charitable Fund		24,888
Mike & Patty Dwyer Family Ministry Fund		48,340
ND Fund for Animal Welfare		4,891
Peter and Stephanie Christianson Family Charitable Fund		189,273
Reuben & Clarice Liechty Family Donor Advised Fund		35,450
Risan Family Charitable Fund		44,526
Robert & Deanne Horne Cross Ranch Endowment Fund		14,115
Sam A. Johnson Endowment for the Arts & Humanities		11,324
Sharing Hearts Fund		46,983
Stacey Ackerman-Todd Pringle Charitable Fund		50,111
Steven D. Nelson & Wanda A. Uran-Nelson Charitable Fund		323,360
Titan Machinery Charitable Fund		98,035
Troy & Kree Nelson Family Charitable Fund		50,798
Yaggie Family Charitable Fund		729,534
<b>Total Donor Advised Endowment Funds</b>		<b>4,243,388</b>

**Committee Recommended Endowment Funds**

Alice Baer Memorial Foundation	\$	44,977
Anne Carlsen Center for Children Endowment Fund		1,643,698
Bismarck Hebrew Congregation Endowment Fund		16,266
Clarence O & Ardeen E Sveum Endowment Fund		11,614
Connie Wold Wellness Foundation		132,630
Friends of Oscar "0" Endowment Fund		882
Gary Bird Charitable Endowment Fund		29,458
Mary E. Finley Endowment for Seniors of Walsh Cty. Fund		40,087
North Dakota Golf Foundation		107,431
Pioneer Square Emergency Fund		33,842
<b>Total Committee Recommended Endowment Funds</b>		<b>2,060,885</b>

**Operating Endowment Funds**

A.L. Braaten Fund		446.44
Arden Burbidge Fund		558.19
Bill & Jean Guy Fund		3,681.58
Brooks Keogh Fund		312.52
Charles Bailly & Company Fund		21,827.65
Cynthia Timmins Maule Memorial Fund		13,790.51
Deluxe Check Printers Operating Fund		49,576.94
Donald Schmid Fund		1,339.74
Dr. Richard H. & Mischelle Timmins Fund		60,154.65
First Bank Bismarck Operating Fund		5,243.43
First National Bank - Dickinson Fund		1,115.83
G.B. Gunlogson Estate Operating Endowment Fund		899,327.52
Harvest States Foundation Fund		5,578.20
J. Gerald Nilles Fund		558.19
Kevin J. Dvorak Fund		17,665.12
Lowell & Marlys Prince Fund		168.14
Mark Andrews Fund		1,116.32
Mr. & Mrs. Donald Shide Fund		430.20
North American Coal Company Fund		5,745.33
Orvald J. Bjerken Fund		57,153.30
Otto Bremer Operating Fund		53,197.91
Peter W. Nielsen Fund		446.44
R.E. Meidinger Fund		3,916.51
Richard Crockett Fund		223.33
Rodney Melby Fund		11,095.98
Ruth Everson Fund		2,623.69
Security State Bank, Robinson Fund		223.33
Soo Line Railroad Operating Fund		11,383.56
Steiger Tractor Inc. Fund		2,232.88
T.A. Roney Fund		940.40
Theodore F Kessel Sr. Fund		2,902.55
Vernon E. Wagner Fund		16,442.64
William Haugan Estate Fund		78,669.99
<b>Total Operating Endowment Funds</b>		<b>1,330,089</b>

**Total Itemized Funds**

**105,926,316**

**Total Non-Endowment Funds**

**9,191,976**

**Planned Gifts**

Assets	\$	961,701
Liabilities, At Present Value		(625,633)
		<b>336,068</b>

**Operating Fund Balance Without Donor Restrictions**

**457,818**

**Total Net Assets**

**\$ 115,912,178**

## Thank You To Our Donors

The incredible projects taking place in North Dakota because of NDCF grants happen because of passionate volunteers and generous donors. Thank you to all who use your resources to make North Dakota a better place to live, work, and play. You are making a difference in the lives of many.

3 Forks Services	American West Real Estate	Shawna Baker	Brandon Berry	Gena Bowar	Carl Bye
4-H Believers Club	AMKO Advisors	Baker Boy	Bessette Motors, Inc.	Andrea Bowman	David Bymoan
702 Communications	Paulette Amundson	Sharron Bakkegard	Thomas Bettenhausen	Bruce Bowman	Roger & Barb Caine
A Community Christmas In Hatton	Anamoose Civic Club	Annette Ballard	Denise Beusen	Duane Bowman	Ryan Callahan
A to Z Tax	Anchor Properties, LLC	Bank Forward	Mary Beyer	John Boyce	David and Shannon Campbell
AAction Moving	Geraldine Andersen	Jolene Baranko	Jane Bichler	Marie T. Boyle	Daniel & Julie Campbell
Jon & Jennifer Aamodt	Tracy Andersen	Mykell Barnacle	Jason & Tina Bichler	Arne Boyum, Jr.	Romel Canapi
H. Dale Aasand	Deb Anderson	Greg Barnes	Amy and Chuck Bickleman	Andy & Ruth Braaten	Linda Candrian
Valerie Abrahamson	Debbie Anderson	Ken Barnes	Julie Biel	Ann Braaten	Capital Credit Union
Abrahamson Foundation	Gary Anderson	Debora Barros	Susan Biesiot	Ed Braaten	Nathan & Breanne Carlson
Accountability, LLC	Jack Anderson	Bartlett & West	Big Game Investments, LLC	Norman Braaten	Danny Carlson
Ryan Ackerman	Jeff and Brenda Anderson	Colette Barton	Kari Bigelow	Wayne Braaten	Gary Carlson
Stacey Ackerman	Kathleen Anderson	Kenneth Bartsch	Rick Bigler	Nick Bradbury	Katherine Carlson
Activities for Learning	Kathryn Anderson	Base Utilities	Leeila Bina	John Brandes	Nancy Carlson
Gary and Lollie Adair	Lane Anderson	Baseview Dairy Queen	Linda Binek	Bruce Brandner	Michelle Carr
Carolyn Adams	Lorna Anderson	Robert Bass	Diane Binstock	Nichole Brandon	Carrington Youth Center
Adams County Development Corporation	Mark Anderson	Donald Bates	Gary Bird	Pamela Brandon	Phil Carter
Cheryl Adamson	Mary Anderson	Gerald Bauer	Robert Birkeland	Bruce Brandvik	Case Consulting, Inc.
Glenda Adkisson	Renee Anderson	Brian Bauske	Brian Bishop	Sandra Bratlie	Dina Cashman
Aetna Foundation, Inc	Ronald Anderson	Brent Bautz	Bismarck Downtown Artist Cooperative, LLC	Tammie Braun	Craig Caspers
AgCountry Farm Credit Services	Scott Anderson	Beach Co-operative Grain Company	Bismarck Rotary Club Scholarship	Bremer Bank Larimore	Cass County Electric Cooperative
Aggie Alumni Association	Shirley Andrus	Laura Beaudoin	Keith Bjerke	Bremer Bank Rugby	Cavalier Growth Fund
Terry Allbee	Annetta Nies Family Trust	Bell Bank	Linda Bjerke	Bremer Bank, National Assoc	Erv Bren
Kathleen Allen	Larry Arendt	Bell Bank & Trust	Sandy Bjerke	Erv Bren	Kathy Bren
James & Kerstin Allmaras	Wesley Argue	Bell Chiropractic	Robert Bjork	Craig Brenner	Craig Brenner
Julie Allmaras	Louise Arlien	Jim & Judy Belquist	Bjornson Oil Co., Inc.	Mary Breuer	Mary Breuer
Linus & Susette Allmaras	Connie Armstrong	Hector & Miranda Benavides	Kevin Black	Bright Funds Foundation	Bright Funds Foundation
Melony Allmaras	Kjersti Armstrong	David Bender	Wyatt Black	Ellen Britton	Ellen Britton
Timothy Allmaras	Army's West	Heidi Bengtson	Carolyn Blake	Becky Brooks	Becky Brooks
Rose Allmaras James	Stacy Arnegard	Roger & Gabbie Benson	Julie Blehm	Gary Brooks	Gary Brooks
Charlotte Allmaras-Magin	Harold Arneson	Ronald Benson	Susan Bleth	Travis Brost	Travis Brost
Don & Claire Althoff	Carla Arthaud	Travis Benson	M. Jean Blilie	Pamela Broussard	Pamela Broussard
Kathy Altringer	Assumption Abbey	Ann Berg	Rhonda Bloom	Richard Brown	Richard Brown
AmazonSmile Foundation	Casey Atkinson	Carrie Berg	BNG Team	Bruce Yaggie Farms, Inc.	Bruce Yaggie Farms, Inc.
Amber Waves, Inc.	Austin Funeral Chapel	Linda Berg	Kathleen Boe	Mary Pat Bruels	Mary Pat Bruels
American Bank Center - Bismarck	Auto Creation & Signs	Rick Berg	Paul Boe	Craig Brunt	Craig Brunt
American Bank Center - Dickinson	Automation-X Corp	LaMae Bergan	Dallas & Mary Ann Boeddeker	Edward Buchholtz	Edward Buchholtz
American Crystal Sugar Company	Auxiliary to the ND Veterinary	Colleen Berger	Sandra Boehm	Kayla Bult	Kayla Bult
American Legion Post #91 New Salem, ND	Lucinda Avriett	Nancy Berger	Barbara Boggess	Nancy Bultema	Nancy Bultema
	Larry B	Adeline Bergeron	Carmen Bohn	James Burbidge	James Burbidge
	B & D Wesfall Farm	Douglas Berglund	Debbie Bolin	Nyle & Arlene Burchill	Nyle & Arlene Burchill
	Badlands Big Sticks Baseball Club, LLC	Joann Stacy Bergrud	Ron & Marlys Boll	Kellie Burgess	Kellie Burgess
	Badlands Hydrovac Services, LLC	Josh & Mary Berlie	Kristine Bommersbach	Julie Burgum	Julie Burgum
	Geraldine Baer	Jana Berndt	Jason Bonderson	Burgum Foundation	Burgum Foundation
	Harris Bailey	Alan & Chris Berry	Cynthia Borchert	Steve Burian	Steve Burian
			Border States Electric Supply	Kasey Burke	Kasey Burke
			Karen Borr	Panne Burke	Panne Burke
			Henry & Kristen Borysewicz	Walt & Angie Busch	Walt & Angie Busch
			Jodi Bosch	Bush Foundation	Bush Foundation
			Michael and Cheryl Bostyan	Business & Professional Womens Club	Business & Professional Womens Club
			Bothun - Peterson Post NO 213	Dina Butcher	Dina Butcher
			Judy Bott	Calvin Buxa	Calvin Buxa
			Jean Boulduc	LaRae Buxa	LaRae Buxa

Nancy Conkins	Daryl Kuhnhehn Memorial Ride	Chamber of Commerce	Calvin & Connie Eslinger	Carol Fordahl	Diane Gilbertson
Steve Conley	Carolyn DeFries	Kim Dressler	Evangelical Bible Church	Forks Lath & Plaster, Inc.	Donna Gilbertson
Linda Conneran	R.E DeGroot	Laurie Drewlow	Ryan & Haley Evans	Fort Stevenson Foundation	Tom Gilbertson
Connie C Connolly IRA	Harlan & Tammy Deike	David Drown	Evans Funeral Home, Inc.	Meghan Fortman	Marjorie Gillespie
ConocoPhillips: Dickinson Office	Michael Delisle	Diane Duchscher	Colleen Evenson	Marlowe Fortune	Diane Gira
ConocoPhillips - Houston	Joshua DeMorrett	David Duey	Ileen Everett	Jeff Forward	Gisi Family Living Trust
Construction Engineers	Dept of Career & Technical Education	Rhonda Dukart	Eric Ewoniuk	Duane & Carol Foss	Renae Gjellstad
Bret Cope	Shirley Destache	Shirley Dukart	Sarah Ewoniuk	June Foss	Jackie Gjermundson
Richard & Diane Cordes	Leslie Dethlefsen	Will Duncan	Donald Facey	Laura Foss	Melissa Gjermundson
Corner Post, Inc	Brandi Deutsch	Jo Hanna Dunlop	Franklin Fahrer	Etta Fox	Tom Glandt
Cornerstone Bank - Fargo	Pam Dever	Kari Dunn	Family Chiropractic & Massage PC	Karen Frank	Duane Glasner
Council on the Arts	Brian & Peggy Devine	Duppong's, Inc	Janet Fanning	Fraternal Order of Eagles	Mark Goedken
Country Friends Homemakers	Mary Devlin	Dr. Troy Dutton	Fargo Jet Center	Aerie No 2328 Dickinson	Ann Goerd
Country Memories Photography	Michael Dewald	Darwin and Sandra Duval	Farmers Union Insurance:	Fraternal Order of Eagles	Stan Goldade
Hugh Cowan	Dewayne A Knoshaug Estate	Kevin Dvorak	Kyle Devries	Watford City	Patricia Goodall
Gary & Diane Cowdrey	Kent Dick	Clark Dybdahl	Farmers Union Service	Freida M. Steinke Estate	Bill Goodwin
Julia Cox	Dickinson Area Public Library Foundation	Sarah Dziak	Association, Ltd	Sandi Frenzel	Mike Goos
James & Elizabeth Craddock	Dickinson Public School District	E Services - Winch/Hotshot/Rentals	Kenneth & Helen Farrell	Beverly Fretheim	Gooseneck Implement
Dallas Crandall	Steve & Barbara Diederick	Stephen Easton	Nicole Fath	Carol Frey	Deb Goplen
William Cregar	Eric & Eunice Dietrich	Fr. Paul Eberle	Ann Faught	Kurt Friederich	Kevin Gorder
Erica Crespo	Laurie Dietz	Mick Eberle	Mike & Julie Fedorchak	Eugenia Frigaard	Melissa Keating Gordon
Margaret Creveling	Carol Dilse	Edward Jones	Kristin Fehr	Jody Friskop	Anne Goss
Haylee Cripe	Leann Dilse	Grace Ehlers	Nancy Felix	Frank Fritel	William Goughnour
Marcella Crosby	Shane Dinius	Eide Bailly, LLP	Beverly Ferderer	Robert Fritel	Terry & Darla Graber
Crossfire	Debbie Disher	Andrew Bartholomay & Tracy Ekeren	Alicia Fettig	Frontstream	Grafton Educational Foundation
CrossRoads Golf Club	Divide County High School Activities	Elick Funeral Home	Maude Fiechtner	Renae Froslie	Grand Island Area Economic Development Corporation
CSI Compressco	Divide County Quarterback Club	Ellie Papineau, LLC	Justin Fiesel	Joelle Fruh	Larry & Halaine Grandalen
Michael & Rachel Cudworth	Dalene Dobitz	Elm River Credit Union	Ben Fink	Beverly Fuller	Granite City Real Estate
Barbara Currier	Jan Dodge	Emerado Arvilla Lions Club	Fire & Ice Refrigeration, Heating & Air, LLC	Phyllis Fuller	Bonnie Graves
Custom Chemical Solutions	J. Doerner	Emerado Farmers Elevator	First International Bank & Trust - Investment House	Garnet & Kathleen Furstenuau	Lisa Graves
Tyler Czech	Teran Doerr	Enbridge, Inc	First Lutheran Church	Doris Gabbert	Kathryn Gray
Merita Dablow-Aldayel	Brian & Laura Dokken	Enchanted Highway Foundation	First Lutheran W.E.L.C.A	Janet Gagelin	Greater Twin Cities United Way
Dacotah Bank - Aberdeen	Lisa Dolezal	Energy Transfer Partners, L.P.	First State Bank of Harvey	Clyde Galliger	Deborah Greenwood
Laurel Dahl	Anonymous Donors	EnerStar Rentals	First State Insurance Agency of Rolla, Inc.	Eric Ganes	Kent Greff
Matt Dahl	Dawn Doohen	Pamela Engelhardt	First United Bank of Park River	Stacy Gangl	Carolyn Griffin
Tanya Dahl	Fintan Dooley	Brooklyn Engelhart	Amanda Fisher	Garbel's Furniture	Shawn Grinolds
Donna Dahlgren	Doosan Bobcat Clark Equipment Company	Amanda Engelstad	Jake Fisketjon	Leonard & Carolyn Garceau	Art Grochow
Dakota Anglers	Lorraine Dopson	Dorothy Enger	Rhonda Fitterer	Joe Garcia	Glen & Melissa Grommesh
Dakota Central	Georgette Dorval	Mary Englund	Lionie Fladeland	Jennifer Gast	Holly Gruhlke
Telecommunications Cooperative	Al Dosch	David Engstrom	Michael Flaherty	Gate City Bank	Linda Guidinger
Dakota Heritage Bank of North Dakota	Dot's Pretzels, LLC	Rita Ennen	Lyle & Nita Flatland	Gibson Gay	Evan Guler
Dakota Pharmacy/Dakota PrecisionRx Labs	Janet Dotzenrod	Envision	Gretchen Flatz	Marilyn Gedrose	Sheila Gunter
Dakota Plains Insurance Agency	Paul Dotzenrod	Eppler Law Office	Loretta Fleckenstein	Amanda Geffre	Dorothy Gustafson
Dakota West Arts Council	John & Diane Douts	Florence Erdle	Donna Fleming	Lori Ann Gefre	Gustafson Septic Service, Inc.
Dakota Western Bank - Bowman	Janel Dowhaniuk	Cleo Erickson	Nancy Fletcher	Kara Geiger	Roger Haaland
Jack & Betsy Dalrymple	Debora Dragseth	Glenda Erickson	Tabatha Fletcher	Kolette Geiger	John Haas
Dan & Kathy Mayer	Donna Mae Dragseth	Karen Erickson	Mark Fliginger	GEM Farm, Inc.	Clinton Hacker
Retirement Account	Drayton Community	Laurie Erickson	FM Builders Exchange	Heather Gensler	Bruce & Colleen Hagen
Barbara Danks		Lynn & Mavis Erickson	Brad Fong	Joel & Joann Gensler	Hagen Dental, PC
		Marla Erickson	Brenda Fong	Richard Gensrich	Hager Excavating
		Milton Erickson	Lola Fong	George & Connie Blank Charitable Fund	Delores Hagge
		Paulette Erickson		Lynn Gibbons	Diana Hahn
		Scott & Kelli Eriksen		Lisa Giese	Madonna Hajicek

Carol Hall	Alyce Heer	Maryellen Homan	Mary Beth Johnson	Shelby Kinkade	Dennis Kubischta
Darren & Danja Hall	Lynette Heidecker	Hometown Credit Union	Walter & Melissa Johnson	David Kinneberg	Deborah Kudrna
Larry & Ashlyn Hall	Tiffany Heier	Autumn Homiston	Nancy Johnson	Connie Kinnoin	Noreen Kudrna
Michael Halldorson	Donelle Heilman	Mary Hondl	Phyllis Johnson	Doug Kinnoin	Lavonne Kujawa
June Haller	Steven Heim	Kathy Hornbacher	Raymond Johnson	Jacqueline Kinzel	Nick Kukla
Halling Cemetery Association	John Heinen	Saralee Hoselton	Renee Johnson	Ethel Kippley	Kukowski Properties, LLC
Pamela Halone	Cherry Heinz	Dave Hougen	Roger Johnson	Jason Kirchmeier	Tara Kulack
Halos Foundation, Inc.	Caralee Heiser	Stephanie Hougen	Steven & Linda Johnson	Debra Kirschenheiter	Kulm Hardware & Home
Marie Halstead	Kristin Helgerson	Keith House	Vaune Johnson	Kenneth & Clare Kish	Center
Tyler Hamman	Chris & Kari Helgoe	Nicole Hove	Jon Steven McLain Living	Susan Kissell	Bonnie Kummer
Casey Hande	Marcia Hellandsaas	Phyllis Hovland	Trust	Agnes Kitzan	Amber Kuntz
Noreen Hankel	Zachary Hellekson	Howard Huber Estate	Christie Jones	Kiwanis Club of Minot	Darla Kuntz
David & Jana Hankey	Jodi Hendrickson	Melana Howe	Victor Jording	Kiwanis Club of Wahpeton -	Rosalie Kuntz
Glenice Hansen	Sarah Hendrickson	Howe Seed Farms	Mark Jorgensen	Breckenridge	Vicki Kunz
Rose Hansen	Tim Hennessy	Gina Hruby	Wendy Jorgenson	Jennifer Kjar	Dean Kurtz
Sylvia Hansen	Peggy Henry	Kathleen Hruby	Jan Jost	Mykke Kjellerson	Neil Kusler
Betty Hanson	Henry & Judee Herr Fund	Cheryl Huber Mizell	Joy, LLC	Megan Klassen	Emily Kutcka
David & Elizabeth Hanson	Marlene Hermanson	Humanities North Dakota	Melvin & Betty Juntunen	Amanda Klein	Judy Kutzer
James Hanson	Jamie & Diana Hermes	Erin Humphrey	Sue Juntunen	Brian Klein	Gary Laber
Renee Hanson	Molly Herrington	Ron Hunsberger	JUST-IN GLASS	Gary Klein	Jean Laber
Judy Harding	Hertz Funeral Homes, Inc.	Christine Hurley	B J Kadrmas	Jackie Klein	Mike LaLonde
Albert Hardy	Marilyn Heskin	Kris Hurt	Christopher Kadrmas	Karen Klein	Melinda Landman
Scott Hardy	Charles Hicks	Inspiration Lutheran	Jo Marie Kadrmas	Jill Kleven	Landmans' Assoc of ND
Lexi Harms	High Country Wind Power,	Brethren Church	Lori Kadrmas	Michael Kliniske	Taryn Landowski
Lenora Harrison	LLC	Investment Security Group, Inc.	Wendy Kahler	KLK Bookkeeping	Terri Lang
Patricia Harsel	High Plains Dental	Brett & Katherine Burgum	Wendi & Richard Kannenberg	Glen & Tara Klostreich	Nathan Lange
Betty Harstad	James Hildreth	Itterman	Carl & Michelle Kannianen	Elaine Klusman	Sheila Lange
Marie Harstad	Dennis Hill	Gloria Iwen	Harvey and Martha Karas	Cheryl Knecht	Shelli Langerud
Thomas Hartl	Hillsboro Vets Club	J&S Metal Fabrication, LLC	Deloris Karnopp	Elva Knudsen	Fay Langseth
Marc Hasbargen	Association	Rachelle Jackson	Kathleen Karstensson	Sandra Knudson	Clarice Langved
Vernae Hasbargen	Louise Hilton	Al Jaeger	Susan Kasprick	Bethol Knutson	Cheryl Lantz
Donald Hastings	Douglas Hintzman	Kristin Jaeger	Tanya Kath	Rodney Koch	Pamela Larimore
Hatton Eielson Museum &	Morrill Hirsch	James C. Clement DVM, Inc.	Melanie Kathrein	Kodabank	Larimore Booster Club, Inc.
Historical Association	Marie Hoerner	James Cabinet & Remodeling	Lance Keator	Kathy Kohler	Larimore Flower Gift and
Hatton Granite Countertops,	Ambrose Hoff	James River Dentistry	Betty Keegan	Roger Kohlman	Coffee
Inc.	Charlotte Hoff	James S. & Janet G. Loos Fund	Michele Keithley	Cleone Kolbo	Larimore Insurance Agency
Hatton Men's Club, Inc.	Joan Hoff	James Valley Grain, LLC	Lori Berg Keller	Rita Kolden	Debra Larsen
Dennis Hauck	Jody Hoff	Ed & Joann Jameson	Larry Kellerman	Laurie Kolling	Darlene Larson
Ronald Hauck	Sue Hoff	Christine Jas	Merry Kellerman	Pamela Kolling	Eric Larson
Sylvia Hauck	Marita Hoffart	Denise Jelinek	Ila Kelner	Paul Kopari	Franklin Larson
Darvin Hauff	Vicki Hoffart	Germaine Jelinek	Kurt & Carla Kemnitz	Julie Kost	Joayne Larson
Martha Haug	Leah Hoffman	Kathryn Jenrich	Melissa & Jered Kemnitz	Scott & Karen Kost	Keri Larson
Juline Haugen	Tamara Hofland	Emily Jensen	Doug & Delores Kemp	Sharon Kotnour	L. Loyal & Shirley Larson
Dick Hauser	Allen Hohbein	Steve Jensen	Mary Kempel	Doreen Kovar	Matt Larson
Hav-It Services	Butch Hohbein	John Jermiason	Bradley Kennedy	Tracy Kovar	Shirley Larson
Jessica Hawkes	Melissa Hollinshead	Mary Beth Jerome	Terry & Shari Kensok	Engelbert & Deborah Kraft	Spencer Larson
Jean Hazen	Rick Holm	Patty Jessen	Marilyn Kent	Kathy Kramer	Larson Family Trust
Jill Healy	Thomas Holmgren	John M. Heinze Trucking	Angie Kesler	Brittany Kratz	Franklin Lassiter
Heart of America Germans	Darold Holten	Clark Johnson	Ray Ann Kilen	Bonnie Krause	Lasting Visions
from Russia	Gayle Holter	Cynthia Johnson	Michael Killoran	Lori Krieg	Taylor Latchem
Heart River Voice	Michael Holter	Darianne Johnson	Patricia Kilwein	Todd Kringen	Brenda Laub
Dan & Angie Heckaman	Phyllis Holter	Darold & Ardella Johnson	Sharon Kilzer	Pete & Angela Kritzberger	Tamara Laurent
Dewey & Joan Heckaman	Alice Holweger	Kathy Johnson	Kindred Storage	Stanley Kruger	Lautt's Auto Body
Scott & Amy Heckaman	Christine Holweger	Kayla Johnson	Maria King	Kubik, Bogner, Ridl &	Valerie Lavik
Wayne & Meagan Heckaman	Eileen Holwegner	Kelly & Jean Johnson	Nancy King	Selinger, PLLP	Kevin Law

Betsy Lawrence  
Lawrence Zillgitt Retirement  
Account  
Sharon Laxdal  
Lowell Lease  
Peggy Ledahl-Schmidt  
Gary & Joan Lee  
Marilyn Lee  
Chuck Leet  
Leevers Foods, Inc.  
Sherryl Lefor  
Susanne Lefor  
Legacy Financial Partners of  
Ameriprise Financial  
Legacy Tool & Rental, LLC  
Linda & Paul Lemieux  
Lemnus Farms, Inc.  
Deborah Lervik  
Sandra LeTexier  
Carol Lewis  
LFP Consulting  
Liberty Business Systems, Inc.  
Liberty Doors  
Susan Lieberg  
Clarice Liechty  
Patricia Lies  
LIGHTBOW, LLC  
Lignite Energy Council  
Paul Lindell  
Vernell & Pat Lindemann  
George Linz  
Lions: Glen Ullin  
Linda Little  
Little Missouri Ranch Supply  
Connie Livingston  
Dustin Logan  
Rachel Logan  
Catherine Logosz  
Lance Loken  
Corey & Larry Longnecker  
Lisa Longnecker  
Jon Lowry  
Eloise Lucht  
Pamela Luehmann  
Lund Oil, Inc.  
Richard Lundby  
Analena Lunde  
Julie Lunde  
Ronald Lundquist  
Peggy Lutovsky  
Lavonne and Jim Lutz  
Lynn D. Ebert Trust  
M&K's Pizza Hub  
Craig & Brenda Bosard  
Machacek

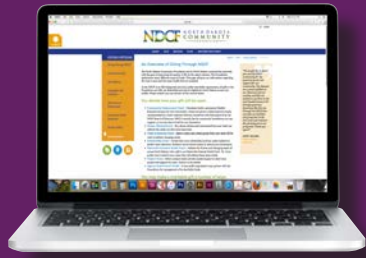
Yvonne Machart  
Philip Maciver  
Galen Mack  
Val Mack  
Lucy Malkasian  
Marilyn Malmedal  
Janice Manly  
Robert Manly  
Marathon Oil Company  
Rachel Markestad  
Loretta Marshik  
Cheryl Martin  
Delrae Martin  
Jennifer Martin  
Linda Martin  
Norma Martin  
Deborah Martinko  
Kenneth Martz  
Wayne Maruska  
Kristen & Matthew Maser  
Mary Massad  
Laurel Massey  
Donna Maston  
Thomas Matchie  
Lynnette Matejcek  
Scott Mathern-Jacobson  
Arlan and Susanne Mathias  
Paul and Angela Matthys  
Lynda Maus  
Jerrica Maxson  
Monte McAtee  
Holly McBee  
Cory McCaskey  
McCloud Farm  
MichaelMcCormack  
Dennis McCoy  
Brad McCullough  
Sarah McCullough  
Eileen McDermott  
Kelly Mcdonald  
Roger McDonald  
Julianne McDougall  
Ken McDowell  
Lisa McEvers  
Tab McGinley  
Mike McHugh  
Audrey McIntyre  
Cory McIvor  
Owen McKenna  
Jerry McLain  
Joy McLain  
Shirley McMillan  
Kara Lee Meduna  
Leroy & Sonia Meehl  
Donovan Meier

Rena Meisch  
Steve & Corrine Melberg  
Merchants Bank  
Larry Messer  
Laura Messer  
Clare Messmer  
Metro Area Ambulance  
Service, Inc.  
Barbara Meyer  
Carmen Meyer  
David Meyer  
Dennis Meyer  
Helen Meyer  
Kathleen Meyer  
Nancy Meyer  
Shirley Meyer  
Audrey Michalenko  
Cindy Mickelson  
Joann Mickelson  
Robert Mickelson  
Roberta Mickelson  
Microlap Technologies, Inc.  
Midcontinent Foundation  
Jon & Carol Mielke  
Allen Miiller  
Christine Milanovich  
Wayne Millar  
Colleen Miller  
Jolene Miller  
Perry & Denise Miller  
Robert Miller  
Tiffany Miller  
Dorothy Miller-Fenske  
Tami Mines  
Minn-Dak Farmers  
Cooperative  
Garry Mislan  
Kristin Mitchell  
Marsha Mitchell  
Sandra Mitchell  
Carol Mjelstad  
Darrell Moberg  
Ashley Moe  
Evan Moe  
Jolene Moe  
Marie Moe  
Nick Moen  
Mohall Fire Department  
Thomas Mohs  
Pamela Montee  
Guy Moos  
Sandra Moos  
Morgan Stanley Gift Fund  
Harvey & Mary Morken  
Sandra Morken

Eunice Morlock  
Carla Mortensen  
Mary Mortensen  
Morton County Water  
Resource District  
Lynn & Wade Moser  
Clarice Mosolf  
Melissa Moss  
Brian & Barbara Mothershead  
Kris Mrachek  
Brenda Muller  
Maureen Munro  
Patsy Muri  
Janilyn Murtha  
Delores Mutch  
My Tribute Gift Foundation,  
Inc.  
Calvin Myers  
Jane Myers  
Elaine Myran  
Ben & Kallie Naastad  
John & Karen Naastad  
Naastad Brothers, Inc.  
Mardelle Naastad-Tollefson  
Joy Naico  
Bonnie Narum  
Dan and Nancy Nathan  
ND Association of Realtors  
ND Aviation Council  
ND Caring Foundation, Inc.  
ND Veterinary Medical  
Association  
ND Water Education  
Foundation  
NDGS, Inc. dba Watford  
Jack & Jill  
Lisa Neameyer  
Neameyer Storage Rentals  
Dennis & Donna Neameyer  
Todd Neiss  
Barbara Nelson  
Debra Nelson  
Jacolyn Nelson  
Jamy Nelson  
Kaye Nelson  
Ken Nelson  
Brian & Kim Nelson  
Nathan Nelson  
Robert Nelson  
Steve Nelson  
Karla Neset  
Mavis Ness  
Paul Ness  
Network for Good  
Daryl Neumiller

New Rockford Lions Club  
Karissa Newby  
Newby's Ace Hardware  
Carol Niemeier  
Dale Niewoehner  
Niewoehner Funeral Home  
Judith Nims  
Jerome Nipstad  
Scott & MaryJane Nipstad  
Nipstad Farms, Inc.  
Nipstad Management  
Solutions  
Shirley Nitz  
Nodak Oilfield Services, LLC  
Carlyle Norby  
Jason & Audrey Nordmark  
Mary Nordmark  
North Border Crop  
Consulting, LLC  
North Dakota Association  
for Career & Technical  
Education  
North Dakota Aviation  
Council  
North Dakota Telephone  
Company  
North Star Community  
Credit Union  
North Star Masonic Lodge  
#16  
Northern Infidels  
Motorcycle Club  
Northern Plains Electric  
Cooperative  
Northern Plains Engineering  
Northland Health Partners  
Community Health  
Center  
Norma Nosek  
NOV Downhole  
NR Evans Giving Fund  
Linda Nudell  
Terrence Nygaard  
Nyhus Law Firm  
Oakes Area Community  
Foundation  
Oakes Enhancement, Inc.  
Oakes Public School  
Jay Oberlander  
Debra O'Brien  
Dream O'Brien  
Renita O'Brien  
Cari Obrigewitsch  
Kathleen O'Connor  
Susan O'Dell

Cory & Rachael Oehlke  
Amy Ohm  
Katie O'Keefe  
Edem Okudzeto  
Patricia O'Leary  
Brandi Ollerman  
Cole Olson  
Jeanne Olson  
Rick Olson  
Marilyn Olstad  
James Omeara  
Layne O'Neill  
ONEOK  
On-Target Ag Services, LLC  
Dana Opp  
Sandra Opperud  
Optimist Club: Dickinson  
Optometry Clinic, PC  
Patricia Orn  
Michelle Orton  
Judy Orvik  
Logan Oscarson  
Audrey Osmondson  
Morris Ostmo  
Thomas O'Toole  
Otter Tail Power Company  
Foundation  
Sonnie Otto  
Otto Bremer Trust  
Scott Ouradnik  
Overland Aviation  
Brenda Owen  
Darlene Owen  
Sonja and Jim Ozbun  
Gregory Page  
Kristy Pagel  
Ardis Painter  
Kendra Palaniuk  
Ron & Sheila Palczewski  
Rhonda Paluck  
Panther Pressure Testers  
Blaine Papenfuss  
Judith Parin  
Jack Paris  
William Parker  
Sharon Pasche  
Debra Patterson  
Bob Paul  
Grace Paul  
David Paulson  
Marilyn Paulson  
Savannah Paulson  
Thomas Paulson  
Monroe Pederson  
Phyllis Peiler



## Types of Gifts We Can Accept:

- Cash, check, or credit card
- Transfers of Stock
- Real Estate
- Agricultural Commodities

## Other Ways to Give:

Make NDCF the Beneficiary of your Life Insurance Policy or Trust (be sure to specify which fund at NDCF you wish to benefit)

Establish a Charitable Gift Annuity at NDCF and receive a guaranteed annual payment for life.

Take advantage of the IRA Charitable Rollover - transfer money directly from your IRA and have it count for your RMD, but not your income!

Leave a gift to your fund at NDCF in your will.



Scott and Shelly Peltier  
 Aaron Pelton  
 Pembina County Auditors Office  
 Danielle Pender  
 Patricia Pender  
 Steve Pender  
 Ila Perhus  
 Kelly & Debra Perhus  
 Ruby Perhus  
 Mary Lou Person  
 John Persson  
 Pete Kritzberger, Inc.  
 Mary Peters  
 Carol Petersen  
 Annette and Brian Peterson  
 Dan Peterson  
 Gaylene Peterson  
 Marlin Peterson  
 Robert Peterson  
 Travis Peterson  
 Willis and Patricia Peterson  
 Gayle Petsinger  
 Ronald Pfau  
 Roxanne Phipps  
 Linda Piccinino  
 Evonne Piepkorn  
 Dianne Pierce  
 Karen Pierce  
 Mary Pieterick  
 Clyde & Dawn Pladson  
 Patricia Pladson  
 Christopher Plount  
 Sherry Plummer  
 Brenda Podolak  
 Dorothy Pokorny  
 Fern Pokorny  
 Woodrow Poland  
 Polar Communications  
 Cynthia Prescott  
 Dan Preszler  
 Tom Probst  
 Greg Pruitt  
 Les & Barb Puppe  
 John & Jennifer Puppe  
 Pure Dental Brands  
 Carroll Quam  
 Elizabeth Quick Berge  
 R. Kilen Consulting, LLC  
 Velma Raasakka  
 Kathryn Rademacher  
 Scott Radloff  
 Robin Radosevich  
 Radtke Service, LLC  
 Kimberly Raguse

Ramsey National Bank & Trust Company  
 Ranger Energy Services  
 Susan Rankin  
 Yvonne Ranschler  
 Nanette Rapp  
 Jamie Rarick  
 Marian Rasmussen  
 Lorna & Wayne Ratchenski  
 Mark & Rebecca Ratchenski  
 Dorothea Rath  
 Sue Raysor  
 Razor Edge Landscaping, LLC  
 Red River Human Services Foundation  
 Red River Valley & Western Railroad Company  
 Pamela Reep  
 Stepheny Reger  
 Wayne & Coleen Rehovsky  
 Christy Reimer  
 Robert Reimers  
 Betty Reinhart  
 Robert Reinke  
 Sarah Reis  
 Lisa Remington  
 Renaissance Charitable Foundation, Inc.  
 Frank & JoAnn Renfrow  
 David Rensch  
 Calvin Reppe  
 Reservation Telephone Cooperative: RTC  
 Steven & Sue Restemayer  
 Wayne Retzlaff  
 Jennifer Reuter  
 Peggy Reuther  
 Jon Rich  
 Richardton Dental Clinic  
 John & Marcia Richman  
 Stuart Richter  
 John Rickertsen  
 Vivian Rickertt  
 Laurie Ridl  
 Roger Rieger  
 Marisa Riesinger  
 Vicki Riley  
 Judy Ringdahl  
 Steve & Michelle Ringdahl  
 Amanda Rinnels  
 Mike Risan  
 Jane Rismon  
 Darlene Risovi  
 Robbie's Backhoe Service  
 Robert D. Timms Estate

Robert Munson IRA  
 Betty Robertson  
 Colleen Rodakowski  
 Jean Rodine  
 Lisa Roers  
 James Roessler  
 Gail Rogne  
 LaDonna Rolfson  
 Tom Roll  
 Rolla Drug  
 Rolla Seed Company  
 Roxane Romanick  
 Ken Rose  
 Connie L. Rosencrans  
 Ethan Rost  
 Lillian G. Rost  
 John Roswick  
 Rotary Club of Bismarck  
 Rotary Club: Dickinson  
 Joe Rothschilder  
 Sheila Rothstein  
 Darrell Rotvold  
 Margo Rowland  
 Rugby Farmers Elevator Co.  
 Kari Jo Ruggles  
 Sherrie Russ  
 Don & Janice Rustad  
 Lacey Rustand  
 Ryans Bar, Inc.  
 Benton Rynestad  
 Sheila Sabinash  
 Rebecca Sadowsky  
 Deborah Salzer  
 Samson Electric Ltd.  
 Joan Samuelson  
 Sand Steel Building Co.  
 Colin Sandell  
 Arlys Sander  
 Dale Sandstrom  
 Betsy Sanford  
 Sanford Health  
 Debra Sarsland  
 Maynard Satrom  
 Geniene Sauvageau  
 Morris & JoAnn Saxerud  
 David Sayler  
 Carla Schaeffer  
 Irene Schafer  
 Lorna Schafer  
 Curt Schaff  
 Karla Schank  
 Jon Schardin  
 Terrance & Carol Scheel  
 Loren & Gwen Scheer  
 Jane Schenstad

Ray Schepp  
 Alice Schilke  
 Claire Schlabsz  
 Terry Schleisman  
 Katie Schlosser  
 Alice Schlotfeldt  
 Mary Schmaltz  
 Mary Jane Schmaltz  
 Janet Schmid  
 Erica Schmidt  
 Kathleen Schmidt  
 Swanhild Schmidt  
 Tamie Schmidt  
 James & Paulette Schmitt  
 Bill & Tara Schmitz  
 Staci Schmitz  
 Schmitz, Inc.  
 Kathleen Schneider  
 Michael Schneider  
 Judi Schnell  
 Steven Schoenig  
 Chuck and Kathy Schorsch  
 Daniel Schreck  
 Cynthia Schreiber-Beck  
 Tom & Char Schuler  
 Donna Schumacher  
 Alexandra Schwab  
 Schwab Charitable  
 Jane Schwan  
 Caroline Schwartz  
 Darlene Schwartz  
 Kimberly Schwartz  
 Kristi Schwartz  
 Molly Schwartz  
 Charlotte Schweigert  
 Robbin Schwindt  
 Kayla Scott  
 Securian Financial  
 Philip Sedo  
 Verda Seeklander  
 Katherine Seifert  
 Hubert Seiler  
 SEP FBO Richard Kannenberg  
 Rebecca Sestak-Miller  
 Andrew Seyer  
 Margaret Shea  
 Shear Designs  
 Agnes Sherlock  
 Shervens  
 Andrea Sherwood  
 Beth Shide  
 Short Elliott Hendrickson, Inc.  
 David Shultz  
 Kristina Sieg

Lorie Sieg  
 Pat Sieg  
 Robert & Kathy Sieg  
 Karmen Siirtola  
 Julaine Silha  
 Orley & Julie Sinkler  
 Lois Sinner  
 Ellen and Monte Sipma  
 Jason Sirek  
 Stan Sirek  
 Lee Sizer  
 Cill Skabo  
 Robert Skabo  
 David & Arlyss Skari  
 Thomas Skinner  
 Margo Skjefte  
 Myron Sliper  
 Geno Sloan  
 Smellie Family Fund of Fidelity Charitable  
 Jean Smestad  
 Kevin Smith  
 Orla and Rick Smith  
 Renae Smith  
 Rita Smith  
 Suzi Sobolik  
 Gaye Soehren  
 Gary Sollid  
 Cris & Jodi Somerville  
 Andrew Sonsalla  
 Sue Sorlie  
 Irene Agcaoili Sorum  
 Soul Haven Studios  
 South Central High School/Day Treatment  
 Chantel Southam  
 Gary Spangelo  
 Jeanne Speich  
 Springan's, Inc.  
 St. Anthony Charity Fund  
 St. Augustine Catholic Church of Fessenden  
 Candace Stanton  
 Starion Financial-Mandan  
 Stark County Sheriff's Office  
 Kenneth Stasiowski  
 Margret Staskivige  
 Karrine Steenblock  
 Vicky Steiner  
 Michael Steinke  
 Colleen Stephenson  
 Peggy Stern  
 Steve & Eileen Scheel Charitable Fund  
 Gregory Stevens



Marlys Stevenson  
Theresa Stevenson  
Raymond Stewart  
Jon Stika  
Harold Stolt  
James Stolt  
Donna Stone  
Roberta Storm  
Duane Stotz  
Sally Stotz  
Donalee Strand  
Galen Strand  
Linda Striebel  
Strobeck Lindseth Farm LLP  
Dorletta “Dee” Stroh  
Ryan and Jen Stroh  
Laurie Strommen  
Dale & Amy Stromsodt  
Strum Agency, Inc.  
James Sturdevant  
Michelle Such  
John & Pam Suchor  
Sunrise Foundation  
Barbara Swanson  
James Swanson  
Susan Swanson  
Kathryn Sweney  
Gregory Swenson  
Jennifer Swenson  
Orlan & Elaine Swenson  
Richard Tabert  
Richard & Janet Tangedal  
Scott Taverna  
Dan Taylor  
Dave Taylor  
Marc Taylor  
Steve Taylor  
Cynthia Tedford  
Wanda Terpening  
David Terry  
Gloria Terry  
Carla Teske  
Jeanne Tews  
The Barry Foundation  
The Bone & Joint Center  
The John Roger Njaa &  
Nancy Marie Njaa  
Revocable Living Trust  
The Traveling Cup  
Nathan Thingelstad  
Clara Thompson  
Deborah Thompson  
Jeff Thompson  
Juliann Thompson  
Kari Thompson

Mary Thompson  
Suzanne Thompson  
Sharon Thomson  
Thorpe Properties  
Wilma Thorson  
Denise Tibbs  
Avis Tilden  
Tim Dwyer Farm Trust  
Lisa Timmerman  
Titan Oil & Gas Assets, Inc.  
Titus Catalyst Fund  
Brian Tjernlund  
Nanci Tobias  
Judy Tofte  
Bruce Tollefson  
Sharon Toop  
Kathie Tooz  
Nichole Tooz  
TorcSill Foundations LLC  
Luane Tormaschy  
Tracy’s Market Mohall LLC  
Julia Trautman  
Andrea Travnicek  
Sheryl Treitline  
Robert Treitline  
Roy & Kathy Trogstad  
Trotter Construction, Inc.  
Sharon Trudell  
Lesley Trulson  
Jerry Tuchscherer  
Marcellene Tuffli  
Brian & Laurie Tuite  
Paul Tuma  
Jewel Turcotte  
William Turner  
Turtle Mountain Star  
Marlene Tveit  
Twin City Technical L.L.C.  
Jack E. & Susan Uhas  
Jean Ulland  
Kay Ulland  
John & Ruth Ulness  
United Community Bank  
of ND  
United Valley Bank  
United Way of Cass-Clay  
United Way: Dickinson  
US Durum Growers Assoc  
Joy Ust-Mclain  
Joy Vaagene  
Valley Veterinary Hospital  
Debra Van Berkom  
Richard & Shirley Van Camp  
Tami Van Camp  
Susan Vanderhyde

Gerald VandeWalle  
Vanray Farms  
Corene Vaughn  
Raye Vculek  
Charles Vein  
Arlin Veitz  
Verendrye Electric  
Jennifer Verke  
Veterans Club, Inc.  
Joyce Viall  
Robert & Kelli Vivatson  
Betty Ann Voeller  
Matthew Voigt  
Bruce & Ann Vold  
Elaine Vold  
J. David Vold  
Rev. Harold Vold  
David Vorland  
Michael L. Wagner  
Yvette Wagner  
Wahpeton Public Schools  
Easton Walby  
Pamela Walcker  
Mike Waldoch  
Joyce Waldock  
Nicholas Walker  
Steve Wallner  
Walmart Stores, Inc.  
Glenn Walz  
Nicki Wamstad  
Jeanne Wanner  
Juli Wanner  
Kayleen Wardner  
Washburn Ambulance  
Service  
Waste Management, Inc.  
Watford City PTO  
WCCO Belting, Inc.  
Weatherford  
Laura Weber  
Leann Weber  
Rhonda Weber  
Weber Insurance Agency, Inc.  
Brenda Wedwick  
Robert Wefald  
Susan Wefald  
Colleen Weflen  
Robert Weigel  
Rondo Weinkauff  
Judith Weisenburger  
Kenneth Weisenburger  
Wesley & Patricia Well  
Well Done Consulting, LLC  
Charlie & Jennifer Wellman  
Herbert Welte

Carol Weninger  
Joseph Weninger  
Rose Weninger  
Homer Wennerstrom  
Billy and Dawna Werven  
Wesley and Lee Anna Weber  
Family Foundation  
West Central Initiative  
West River Veterinary Clinic  
- Hettinger  
Bob Westfall  
Kathy Wetzell  
Joy Wezelman  
Cory White  
Maren White  
Peter White  
Travis White  
Wholesale Ag Products  
Wick Communications  
Virginia Widmer  
Joe Wiegand  
Barbara Wieland  
Jolene Wilhelmi  
Mark Wilhelmi  
Ryan Wilhelmi  
Martha Willand  
William E. Kretschmar Estate  
E.A. Williams

Wilmington Lutheran  
Congregation  
Wil-Rich  
Brent Winkelman  
Winn Construction  
Amanda Wisness  
Jeff Withuski  
WM. C. Blair Post No. 144,  
American Legion Trust  
Fund  
Doug Woehl  
Richard Wohl  
Ardyce Woinarowicz  
Dawn Wolf  
Shari Wolf  
Andrew Wolff  
Scott & Kerri Wolff  
Nikki Wolla  
Women’s Care Center  
Cathy Workin  
Roger & Kay Worner  
Linda Woytassek  
Kimber Wraalstad  
Nicole Wright  
Bob Wurl  
Wyndmere Education  
Foundation, Inc.  
Joan Yahna

Mark & Katie Yahna  
Sparkle Yeagan  
Swapna Yeruva  
YourCause LLC Trustee for  
Wells Fargo Community  
Support Campaign  
YourCause, LLC Trustee for  
American Family Insurance  
Dreams Foundation  
Justin & Liza Ystaas  
Matthew Ystaas  
Reed & Lexi Ystaas  
Dave Zetocha  
Diana Zietz  
Jeanne Zimmerman  
Mark Zimmerman  
Melody Zimmerman  
Daniel Zink  
Paul Zink  
Carrie Zubke

---

### Memorials

These people were remembered by loved ones and friends through a gift to the North Dakota Community Foundation. We are honored to present their names as a tribute to their lives. May their memories remain strong in our hearts.

---

AJR  
Peter Allmaras  
Steven Allmaras  
Ted & Naomi Allmaras  
Bruce Anderson  
David L. Anderson  
Goodie Anderson  
Jack Anderson  
Jean Anderson  
Melonie Anderson  
Janice Arthur  
Lorraine Baerwald  
Kevin Bagley  
Duane Baillie  
Irene Baillie  
Roger & Nissy Bakke

Barb and Curley  
Helen and Everett Barta  
Marlene Bates  
Scott Bekken  
Benjamin Berg  
Art & Olga Bergeron  
Jim Bietz  
Thomas J. Birkeland  
Orvis and Dorothy Bjerke  
Harold Bjork  
Frank Borjeson  
Ralph & Irene Bosard and  
Elmer & Mary Nelson  
Norm Sr & Audrey Braaten  
Audrey & Norm Braaten &  
The Class of 1981

Clement Brandner  
Norma & LeRoy Bratland  
Yikealo Breidenbach  
Wade Burgess  
Gerald Burhartsmeier  
Kyler Bymoen  
Manfred & Anna Bymoen  
Joelyn Bymoen Scriba  
Dora & Ed Carleen  
Jodi Carlson  
Rodger Carlson  
Anselma Clemetson  
John E. Conneran  
Scott Cranston  
Roger, Robert & Kelly Dahl  
Kelly Dakken

George & Gladys Daniels  
Thordis and Vernon Danielson  
Jim Davis  
Donald Diepolder  
Judy Dosch  
Dragseth Family Members  
John Dwyer  
Tim Dwyer  
Dorothy Eklund and Marvin Onstad  
Charles H. Ellefson  
Irving Eng; Lorraine Ness  
Lillian Enger; Jr. Pederson; Donna Hanson; Carla Sletten  
Warren Enyart  
Linda Erickson  
Ron Andrew Erickson  
Linda Erickson, Joe Larson & Scott Cranston  
Arnold (Arnie) & Lois Fahrer  
Judy Fandrich: Biggest Rocket Fan  
Jim Fandrich; Eric Hewitt  
Arlin Fetting  
Dr. Bart Fischer  
Shawn Flaherty  
Jessy Deras Flores  
Jim Foss  
Judge Ray R. and Irene Friederich  
Teresa Fritel  
Eleanor Gafkjen  
Dennis Gehrtz  
Russell & Fran Gilliss  
Raymond Grade  
Elaine Ma Green  
Nettie Greicar  
George & Gladys Guler Family  
Elroy Haadem  
Father Lawrence Haas  
Father Haas; Melvin Zaun  
Theresa Halvorson  
Jody Hams; Sandy Johnson  
Rose Hanson  
Donna Hanson; Orville Ness  
Judy Mae Hauff  
The Heilman Family  
Alice Heintz  
John Hellandsaas  
Claire & Evelyn Hermes  
Joshua Highness, Craig Fenske & Katie Bjorndahl  
Marvin Hochalter  
Pete Hoffart  
Rupert & Lola Holten

Paul Hougen  
Tim & Vella Hougen  
Paul, Charlie, Jim, and Vella Hougen and Judy Fossum  
Phyllis Garaas Hummel  
Phyllis Garaas Hummel; Lorene Johnson  
Vicki Hunsberger  
Clara Hutchinson  
Dwight Jelsing  
Altha Johnson  
Delores M. Johnson  
Fay Johnson  
Marjorie Dorsher Johnson  
Selma Johnson  
Marian Hagen Johnson - Grenora Class of 1947  
Alice Jorgenson  
Marlene Jorgenson  
Norman Kaste  
Louise & Kenneth Kellerman  
Loni Kessler  
Bob King, Football Coach 1960-65  
Carl Kinneberg  
Christ Koble  
William Krick  
Walt Kriewald  
Bob Kroger  
Harold Krueger  
Richard Kuhn  
Daryl Kuhnhenh  
Elaine Kunz  
Marvin Laaveg  
Aaron Labrensz  
Doris Landerholm  
Doris Landerholm; Ed Englerth  
Joseph Larson  
Wesley Laughery  
Charles Lavergne  
Jim Lawler  
Clifton Lee  
Our deceased parents: Godfrey Dvorak, Sidney Dvorak, Iva Lemieux, Joseph Lemieux  
Charleen Lesmeister  
Lies-Vanderhyde Families & Class '69 St. James  
Alice Lillemoen  
Bertha Liming  
Reiker Logan  
Ervin Longnecker  
Marty Lucht  
Bob Manly  
Dennis Marthe

Jackson Harley Mayer  
Jack McDowell  
Metta McDowell  
John Meahger  
Doug Meier  
Phillip Messer; Connie Treeber; Lisa Rixen; Bill (William) Dohrman  
Don Meyer  
Lowell Mickelson  
Mickelson/Saxlund  
Jean Miller  
Darwin Moen  
Dr. Roland (Rollie) Montgomery  
George & Mildred Moore  
Gertrude & Arnold Morkve  
Adeline Morrison  
Jerome Muller - Class of 1962 Grenora High School  
Charlie Murphy  
Francis Joe Murphy  
Russel P. Naastad  
Edwin M. Nagel  
Caroline Natwick  
Alan Nelson  
Rodney Nelson  
Lorraine Ness; Loretta Benson; Gudrun Pladson; Ellie Williams  
Wanda Nielsen  
Wanda Nielsen and Bertha Liming  
Louise and Werner Nistler  
Randy Norby  
Orlyn Nygard  
Floyd Olson  
Marjorie Olson  
Marion Omoth  
Richard Ostby  
Louis & Helen Owen  
Preston Page  
Rick Parsons  
Barbara Patterson  
Michael Paul  
Harvey H. Pedersen (Grenora Class of 1948)  
Carolyn F. Perdue  
Delmaine Peterson - 1959  
Gregory Peterson (75)  
John Peyerl  
Arthur Pfeifer  
Russell Pladson & Mikoyo Smested  
Clarence Chip Poling  
John Putz  
Deborah (Deb) Quiring

Loretta (Greta) Rasmussen  
Charles Chuck Rebsch  
Donald Reichel  
Joe and Alice Rindt  
Betty Ringling  
Tom Rizzo  
JP Robbins and Seth Hinger  
Denise Roerick  
Mary Lou Roller, Florence Wasness, Verna Stave  
Carol Rosenau  
Esther Rufsvold  
Ruth Rust & Diane Schlichtmann  
Alex Saltbulltry  
Maralyn Salting; Sister Mabel Meng, OSF  
Katherine Salwei  
Dyke Sandell (Enderlin HS Class of 1928)  
Simon Sattler  
Mary Ellen Schaal  
Joan Schaefer  
Ray Schlichtmann, Peggy Olsen & Karen Haugerud  
Clem Schmaltz  
John Schmitz  
Barbara Schneibel  
Bernard (Bernie) Schultz  
Barbara Schweitzer  
Hadley Seeklander

Mr & Mrs Chris Severtson  
Dick Simoneau '76  
Elaine Sinnes  
Kirstin Skari  
Doris Skavhaug  
Pauline Sletten  
Carla Sletten; Donna Hanson; Lillian Enger; Orville Ness  
Mikoyo Smested, Russell Pladson, Curtis Dokken  
Gordon & Helen Smith/ Curtis & Noreen Bergrud  
Mildred Solberg  
Jerry Stahl & Wayne Simon  
Freida Steinke  
Agnes Stewart  
Jessy Stockdale  
Howard and Margaret Stone  
Marvin Strande, Scott Cranston & Alice Lillemoen  
Verlyn Streng  
Aldon Strobeck  
Henry & Olia Strobeck  
Roy Taylor  
Alex Thatcher  
Gloria Thompson  
Marvin & Lyla Tollefson  
Paul Toutges  
Joy Vaagene  
James T. Vasichek

Bernie Vculek  
Shelly Viall; Kirsten Bratvold  
Patty Wagner  
Andy Waldock; Steve Waldock  
Delores Walker  
Mary Kay Walker  
Ed & Anna Walz  
Bruce Wateland  
Richard (Dick) W. Weber  
Lou Weckerly  
Mal Weisenburger  
Richard & Vonnie Weisenburger  
Ron Wentz  
Valentine Wentz  
Sol M. Wezelman  
Roger P. Wick  
Ruth Molvik Wigness  
Dennis Wipperling  
Edwin Witt  
Dorothy Yoder  
Gracie Ystaas  
Deborah Ziegler  
Robert Ziegler  
Virgil Zink

### *In Honor Of:*

All medical and first responders  
Alliance between Tituls Talen & Patrick Metzger-EOS Coach  
Beckee Beulke's High School Graduation  
Belquist Family  
Capital Credit Union  
Dave Engstrom of Wahpeton  
Delphine Lutovsky  
Dr. Steven and Linda Johnson  
Duaine Paul; R'Jay Paul & Tim Paul  
Essential Workers  
Governor Burgum & his great staff for their great work managing the COVID-19 crisis  
Grenora Students 1959-1966  
Happy Holiday to John's Family (John E. Conneran Memorial Scholarship)  
Keith & Shirley Anderson  
Lions Club of Glen Ullin  
Mary Jane Schmaltz  
NRS Class of 2008 (New Rockford-Sheyenne Public School)  
Richard Ostby  
Seiler & Lies Families  
The Class of 1974 (New Rockford-Sheyenne Public School)  
The Class of 1998 (New Rockford-Sheyenne Public School)  
The Holmgren Family

*We are here to help!*

If you have any questions about charitable giving in North Dakota, the 40% State Tax Credit, or starting a fund at NDCF, please give us a call. There is no obligation and we are happy to help you.

More information can also be found on our website at [www.NDCF.net](http://www.NDCF.net).



*Our Staff*



**Kevin J. Dvorak, CFP®**  
President & CEO  
701-222-8349  
Kevin@NDCF.net



**Christi Stonecipher**  
Director of Communications  
701-222-8349  
Christi@NDCF.net



**Brent Winkelman**  
Accountant  
701-222-8349  
Brent@NDCF.net



**Deb Clark**  
Office Manager  
701-222-8349  
Deb@NDCF.net



**John Heinen, CFRE**  
Development Director  
West



**Kara Geiger, CFRE**  
Development Director  
Central

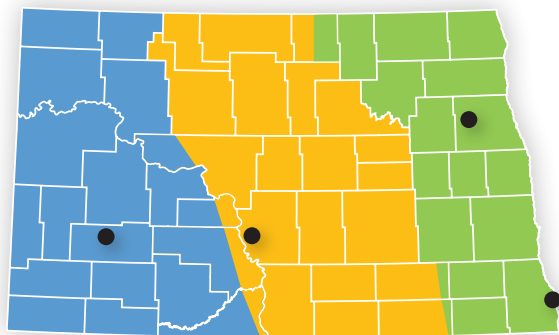


**Amy Stromsodt, CFRE**  
Development Director  
East



**Jana Berndt**  
Development Director  
Richland-Wilkin CF

**Western ND Office**  
PO Box 1505  
Dickinson, ND 58602-1505  
701-590-4614 (cell)  
John@NDCF.net



**Central ND Office**  
711 Riverwood Dr.  
PO Box 387  
Bismarck, ND 58502-0387  
701-222-8349 (office)  
Kara@NDCF.net

**Eastern ND Office**  
PO Box 735  
Larimore ND 58251  
701-741-3193 (cell)  
Amy@NDCF.net

**Wahpeton, ND Office**  
PO Box 905  
Wahpeton, ND 58075  
701-640-2058 (cell)  
Jana@NDCF.net

*Ensure a brighter future for your nonprofit . . .*



*. . . start an Organizational Endowment Fund at NDCF today.*



Nonprofits provide vital services to our North Dakota communities and residents, from improving our education to senior care to arts opportunities that wouldn't otherwise exist. NDCF is here to help our nonprofits not only survive but thrive.

An Organizational Endowment Fund is a permanent fund that benefits your nonprofit forever. The principle in the fund is never spent. Instead, the interest earned on the fund is available every year to provide resources for your projects and programs. An Organizational Endowment Fund at NDCF provides a reliable source of income to your organization and over time, these interest earnings can become an important part of your annual budget. They are especially helpful when your regular fundraising events must be canceled or abbreviated because of unexpected circumstances (like a blizzard or worldwide pandemic, for example.)

**Having an endowment fund at NDCF is an indication that an organization's leadership is planning for the future.**

## How We Can Help You...

Over 80 nonprofit organizations have established a qualified ND Organizational Endowment Fund at the North Dakota Community Foundation (NDCF) to provide their organization a stable source of income.

NDCF handles all the tax implications, invests the money on their behalf, and sends receipts to all their endowment fund donors. They are free to focus on running their nonprofit instead of managing their endowment fund.

The benefits of establishing an endowment fund at NDCF include:

- **Low Cost**—no upfront costs to establish & minimal annual fee
- **Documents and services we provide:**
  - Organizational endowment agreement, proper receipting of gifts including thank you letters with correct technical language so donors may properly take the 40% ND income tax credit
  - Assistance in developing marketing materials, such as brochures and fundraising letters
  - Online credit card giving services for your fund
- **Minimum amount required to establish**—May be established with any amount, but must receive at least \$25,000 in gifts by the third anniversary of the first gift.
- **Compliance with ND Tax Credit Law**
- **Access to Professional Investment Advice**—NDCF uses eight different investment companies to manage our \$100 million assets in diversified portfolios. Multiple asset classes are used, including non-traditional alternative assets such as private equity, real assets, and hedge funds.
- **Access to Planned Giving Assistance**—With an endowment fund at NDCF you receive access to our planned giving staff so that you may provide your donors with professional planned giving options such as charitable gift annuities, charitable remainder trusts and the full menu of planned giving services.

*Give your donors the option to support your mission forever - establish an Organizational Endowment Fund at NDCF today.*

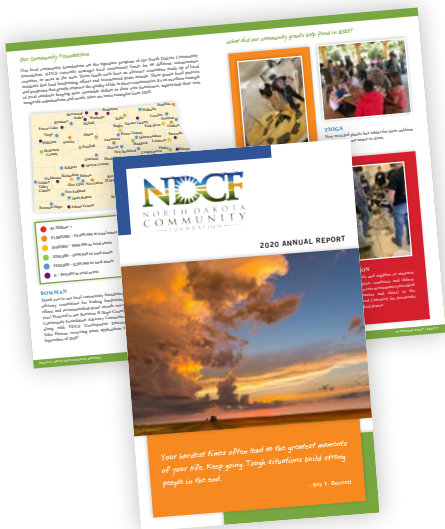
“Our organization would not be able to function without the compassion and support from the ND Community Foundation as well as other granting agencies, our area churches, businesses and those individuals who live and work in our communities. Thank you for investing in the well-being of our community.”

*- Patti Regan, Executive Director of Aid, Inc. in Mandan*

thank  
YOU

## Former NDCF Board Members

Evan Lips <i>Bismarck</i>	Arnold L. Braaten <i>Minot</i>	Carol Hjelmstad <i>Reynolds</i>	Dan Liberda <i>Carrington</i>
M. Rosalie Lier <i>Fargo</i>	Jim Davis <i>Bismarck</i>	Cornelius Grant <i>Bismarck</i>	Rosemarie Myrdal <i>Edinburg</i>
Donald Schmid <i>Bismarck</i>	Wayne Leiner <i>Fargo</i>	Robert Schuller <i>Bismarck</i>	Neil Fedje <i>Cavalier</i>
Stanley M. Moore <i>Jamestown</i>	Karnes Johnson <i>Sentinel Butte</i>	Ray Hoffman <i>Bismarck</i>	H. Michael Hardy <i>Fargo</i>
Richard Crockett <i>Fargo</i>	Theodore Kessel, Sr. <i>LaMoure</i>	William Kretschmar <i>Venturia</i>	Jim T. Weisser <i>Linton</i>
John Hove <i>Fargo</i>	Daniel Lessard <i>Grafton</i>	Rollie Morud <i>Dickinson</i>	Patsy Thompson <i>Bismarck</i>
Ruth Everson <i>Bismarck</i>	David M. Gipp <i>Bismarck</i>	Jacque Schauer <i>Sterling</i>	Marie Arnold <i>Dickinson</i>
Richard T. Carley <i>Casselton</i>	Jan Berg <i>Jamestown</i>	Rita Staloch <i>Minnewaukan</i>	Rob Gayton <i>Bismarck</i>
Arden Burbidge <i>Park River</i>	Sarah Andrews Herman <i>Fargo</i>	Irma Dulmage <i>Leeds</i>	Anne Riske <i>Fargo</i>
J. Gerald Nilles <i>Fargo</i>	Mrs. Jo Jacobson <i>Alamo</i>	Joanne H. Ottmar <i>Jamestown</i>	Jennifer Rasch <i>New England</i>
T. A. Solheim <i>Minot</i>	Monty Burke, Sr. <i>McKenzie</i>	Agnes Palanuk <i>Dickinson</i>	Donald Opegard <i>Park River</i>
Marijo Shide <i>Larimore</i>	Mark J. Butz <i>Rugby</i>	George Cox <i>Grand Forks</i>	Diane Peyerel <i>Rural Penn</i>
Richard McGee <i>Minot</i>	Vernon E. Wagner <i>Bismarck</i>	Mary Kay Olson <i>Langdon</i>	Aaron Schmit <i>Williston</i>
Peter Nielsen <i>Grand Forks</i>	Francis Forster <i>Richardton</i>	Frank Keogh <i>Williston</i>	Steve Ottmar <i>Jamestown</i>
Dr. E. J. Hagan <i>Williston</i>	Keith Bjerke <i>Northwood</i>	Orlin Backes <i>Minot</i>	John Botsford <i>Grand Forks</i>
Justice Vernon Pederson <i>Bismarck</i>	Gerald J. Nilles <i>Fargo</i>	Tara Holt <i>Bismarck</i>	Becky Thatcher-Keller <i>Cooperstown</i>
Brooks Keogh <i>Keene</i>	Ray Hoffman <i>Bismarck</i>	Bill Marcil, Jr. <i>Fargo</i>	Christie Obenauer <i>Hazen</i>
William L. Guy <i>Bismarck</i>	John Pierson <i>Bismarck</i>	Linda Steve <i>Dickinson</i>	LouAnn Waliser <i>Lisbon</i>
T. A. Roney <i>Carrington</i>	Theodore Kessel <i>LaMoure</i>	Warren Robinson <i>Bismarck</i>	Douglass Prchal <i>Bismarck</i>
Carol Jacobson <i>Alamo</i>	Howard Schmid <i>Oberon</i>	David “White Thunder” Trottier <i>Dunseith</i>	Dawn Mandt <i>Grafton</i>
B. P. McDermott <i>Grand Forks</i>	Dean Lenaburg <i>Valley City</i>	Lowell Overbo <i>Ashley</i>	Diane Baumbach <i>Emerado</i>
Dr. Dean Strinden <i>Williston</i>	Marlys Prince <i>Regent</i>	Chad Peterson <i>Fargo</i>	Sheila Palzcewski <i>Bowman</i>
Wade Arnegard <i>Dickinson</i>	Taylor Barnes <i>Jamestown</i>	Dennis Johnson <i>Watford City</i>	Scott Swenson <i>Watford City</i>
Gloria Legrid <i>Jamestown</i>	Frank P. Keogh <i>Williston</i>	Lynn Nelson <i>LaMoure</i>	Nancy Johnson <i>Fargo</i>
Dale Anderson <i>Fargo</i>	Duaine Espégard <i>Minot</i>	Joe Hauer <i>Bismarck</i>	Wayne Hauge <i>Ray</i>
Warren DeKrey <i>Bismarck</i>	Russell Stegman <i>Cavalier</i>	Barbara Mayer <i>Regent</i>	



You are receiving this report because you either...

1. Have supported one of NDCF's component funds in the past.
  2. You are a pretty important person & we thought you'd want to know this stuff.
- or
3. Both!

*Thank you!*

### Help us keep our mailing list current!

- Is your address incorrect?
- Are you receiving duplicate copies of this report?
- Would you like to be removed from our mailing list, or would you like to add someone?

### Let us know:

✉ Email us at [info@NDCF.net](mailto:info@NDCF.net)

☎ Call 701-222-8349

✉ Or Write to

North Dakota Community Foundation  
PO Box 387  
Bismarck, ND 58502-0387